

Manuals+

[Q & A](#) | [Deep Search](#) | [Upload](#)

manuals.plus /

- › [Master Lock](#) /
- › [Master Lock Key Lock Box 5400EC3 Instruction Manual](#)

Master Lock 5400EC3

Master Lock Key Lock Box Instruction Manual

Model: 5400EC3 (3-Pack)

INTRODUCTION

Thank you for choosing the Master Lock Key Lock Box, Model 5400EC3. This outdoor key safe provides secure storage for your house keys, ideal for realtors, property managers, landlords, and short-term rentals. Each lock box features a durable metal body, a vinyl-coated shackle to prevent scratching, and a weather-resistant shutter door to protect the combination dials. This manual provides detailed instructions for setting up, operating, and maintaining your key lock box.



Image: Three Master Lock 5400EC3 key lock boxes, showcasing the product included in the 3-pack.

SETUP

Setting Your Combination

Your Master Lock Key Lock Box comes with a preset combination of 0-0-0-0. Follow these steps to set your personalized four-digit combination:

1. **Open the Lock Box:** With the dials set to 0-0-0-0, pull down the shackle to open the lock box.
2. **Locate the Reset Lever:** Inside the lock box, on the back of the door, locate the reset lever.
3. **Push Lever to Position A:** Using a pointed object (like a pen), push the reset lever from its current position to position 'A' (upwards).
4. **Set New Combination:** Rotate the dials to your desired four-digit combination. Ensure the numbers are aligned clearly.
5. **Push Lever to Position B:** Push the reset lever back down to position 'B' (downwards). This locks in your new combination.
6. **Scramble Dials:** Close the lock box door and scramble the dials to secure your new combination.

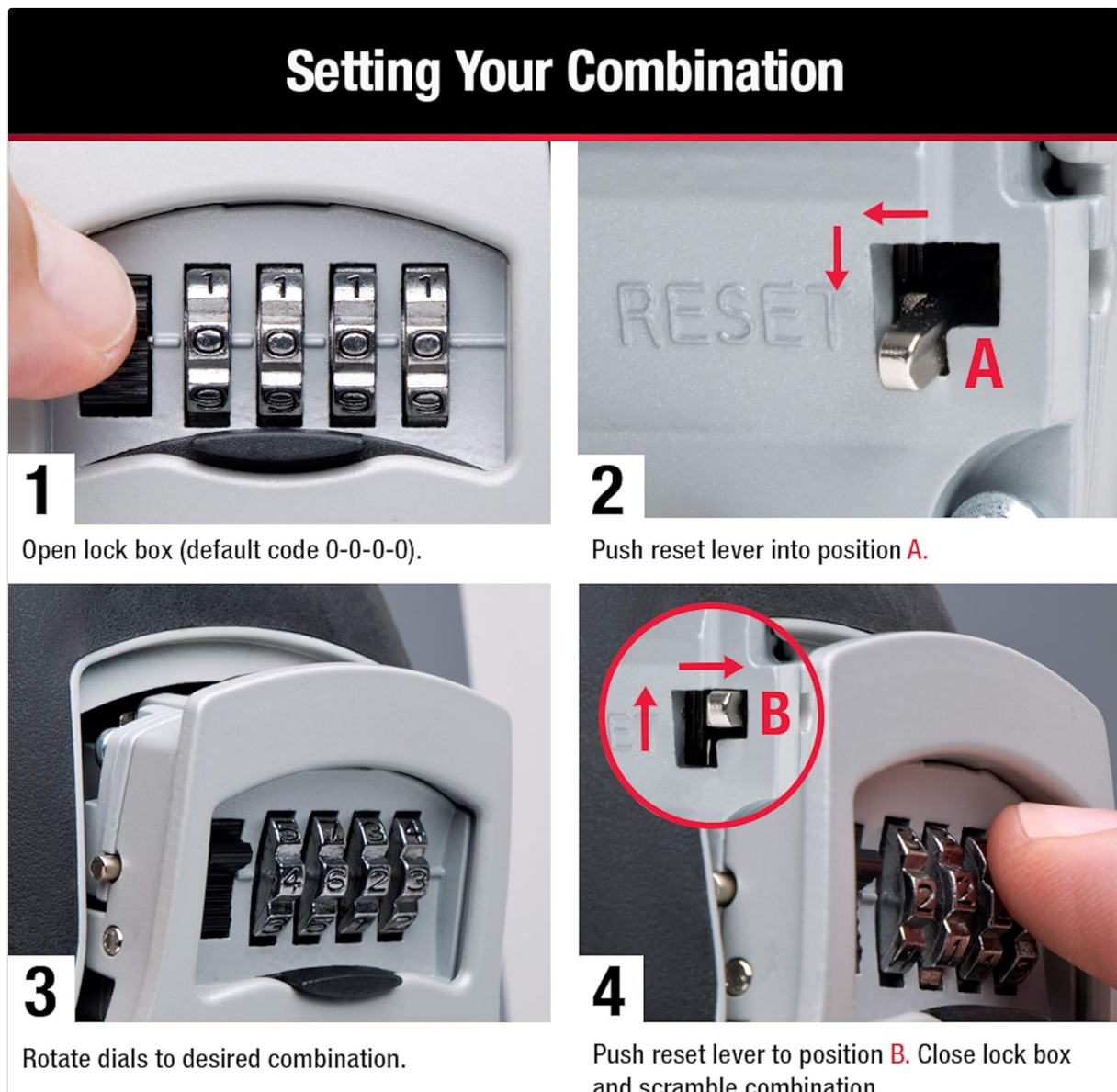


Image: Detailed steps for setting your personalized combination on the key lock box.

Important: Remember your new combination. There is no master key or override code to open the lock box if the combination is forgotten.

Attaching the Lock Box

The Master Lock 5400EC3 features an over-the-knob design for portable application. It is compatible with

most ball, biscuit, and tulip door knob styles, as well as handles. It is not designed for use with lever-style door handles.

1. **Open the Shackle:** With the correct combination entered, pull the shackle upwards to open it.
2. **Position the Lock Box:** Place the open shackle over the door knob or handle. Ensure the lock box body is facing away from the door initially.
3. **Rotate and Close:** Once the shackle is around the knob/handle, rotate the lock box so the combination dials face outwards. Push the shackle firmly into the lock box body until it clicks securely into place.
4. **Scramble Dials:** Scramble the combination dials to secure the lock box.

Over-the-Knob Design for Portable Application

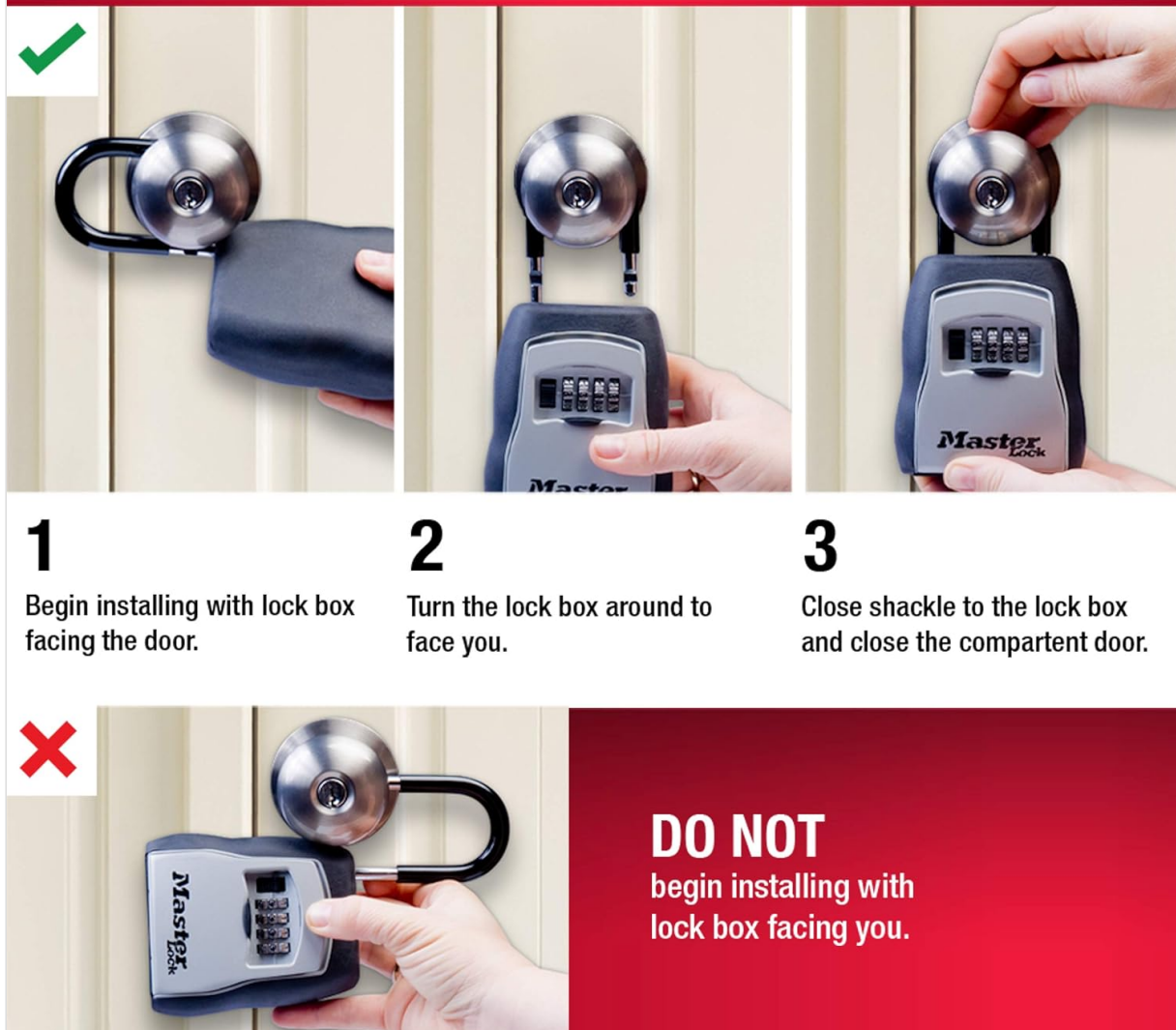


Image: Installation guide for attaching the key lock box to a door knob.



Knobs



Handles



Levers

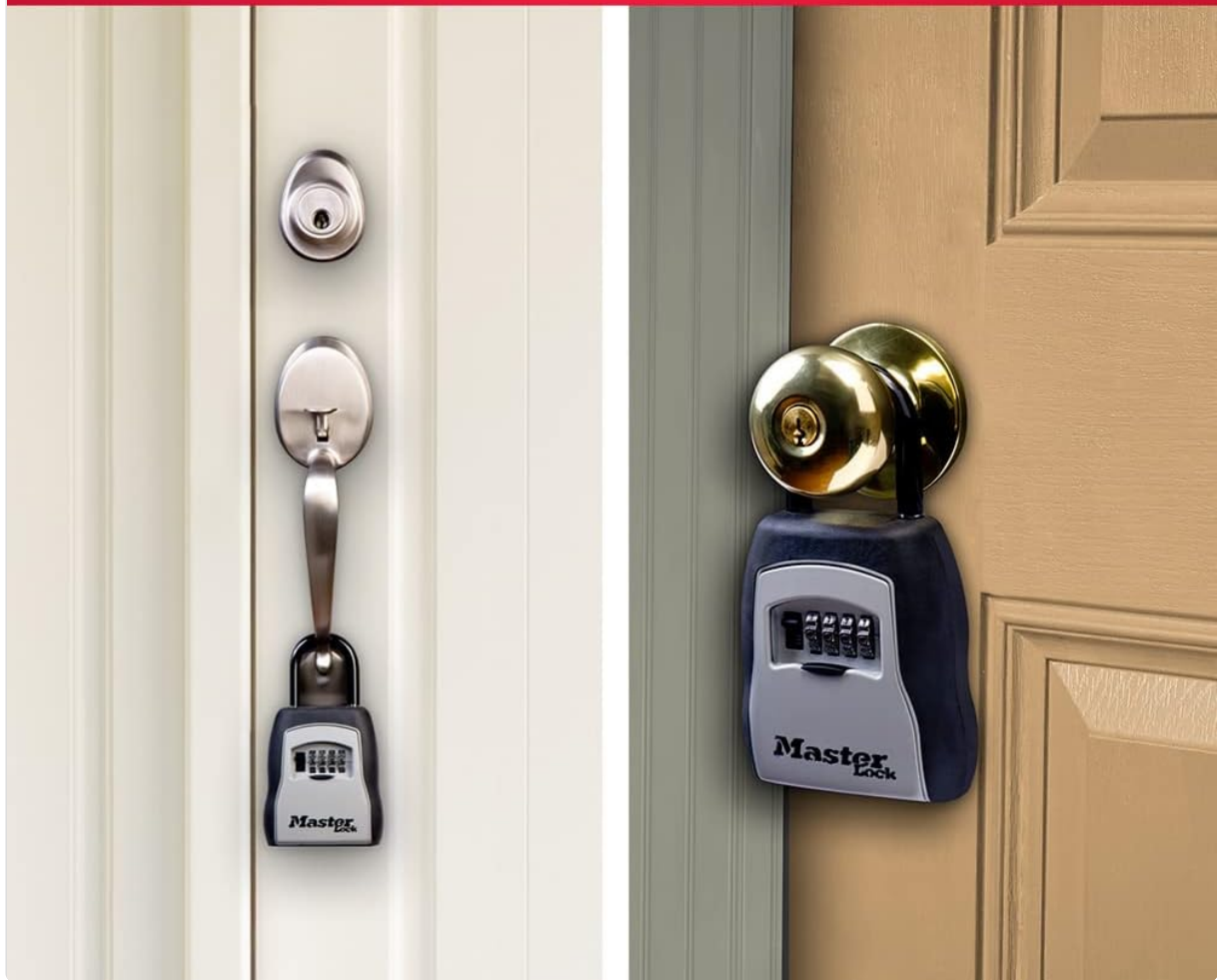


Image: Compatibility guide for door knobs, handles, and levers.

OPERATING INSTRUCTIONS

To access or store keys in your Master Lock Key Lock Box:

1. **Enter Combination:** Rotate the dials to your set four-digit combination. Ensure the numbers are perfectly aligned with the indicator marks.
2. **Open Shutter Door:** Slide the black shutter door downwards to reveal the key compartment.
3. **Access/Store Keys:** The compartment can hold up to five standard house keys. Place or retrieve keys as needed.
4. **Close Shutter Door:** Slide the black shutter door back upwards to cover the combination dials and key compartment.
5. **Scramble Dials:** Scramble the combination dials to a random set of numbers to secure the lock box and prevent unauthorized access.

Secure Storage for up to 5 House Keys



Image: Demonstrates secure key storage within the lock box, contrasting with insecure methods.

MAINTENANCE

To ensure the longevity and optimal performance of your Master Lock Key Lock Box:

- **Cleaning:** Wipe the exterior with a soft, damp cloth. Avoid abrasive cleaners or solvents that could damage the finish or internal mechanisms.
- **Weather Protection:** The integrated shutter door is designed to protect the combination dials from weather elements. Ensure it is always closed when the lock box is not in use.
- **Shackle Care:** The shackle is vinyl-coated to prevent scratching surfaces. Periodically check for any wear or damage to the coating.
- **Dial Operation:** If the dials become stiff, a small amount of silicone lubricant can be applied to the moving parts. Do not use oil-based lubricants.

TROUBLESHOOTING

- **Lock Box Will Not Open:**
 - Ensure the combination dials are precisely aligned with the indicator marks. Even a slight

misalignment can prevent opening.

- Verify you are using the correct combination. If you recently changed it, try the new combination.
- Check if the dials are stuck due to dirt or debris. Clean the dials and try again.

- **Shackle Will Not Close:**

- Ensure the shackle is properly aligned with the opening in the lock box body.
- Check for any obstructions inside the shackle opening.

- **Dials Are Stiff:**

- Clean the dials thoroughly.
- Apply a small amount of silicone-based lubricant to the dial mechanisms.

SPECIFICATIONS



Image: Interior dimensions and key capacity of the lock box.

Feature	Detail
Model Number	5400EC3

Feature	Detail
Lock Type	Combination Lock (4-digit)
Exterior Dimensions (H x W x D)	6.25 in (158.75 mm) x 3.25 in (82.55 mm) x 1.5 in (38 mm)
Interior Dimensions (H x W x D)	1 in (25 mm) x 2.4 in (61 mm) x 1 in (25 mm)
Key Capacity	Up to 5 standard house keys
Shackle Length	1-13/32 in (36 mm)
Shackle Width	1-7/8 in (48 mm)
Shackle Diameter	13/32 in (10 mm)
Material	Metal body, Vinyl-coated shackle
Weight	Approximately 16 ounces (per unit)
Color	Black

WARRANTY

The Master Lock Key Lock Box (Model 5400EC3) is covered by a **Limited Lifetime Warranty**. For specific terms and conditions, please refer to the warranty information provided with your product packaging or visit the official Master Lock website.


SUPPORT



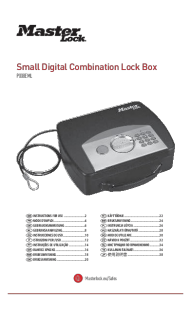

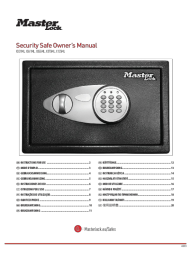
For further assistance, product inquiries, or technical support, please contact Master Lock customer service. You can find contact information on the official Master Lock website or through the retailer where you purchased the product.

Visit the [Master Lock Store on Amazon](#) for more products and information.

© 2024 Master Lock. All rights reserved.

Related Documents - 5400EC3

	<p>Master Lock #5400D Key Storage Combination Lock Instructions</p> <p>Comprehensive instructions for operating, setting combinations, and using the Master Lock #5400D portable key safe with shackle. Learn how to open, secure, and maintain your key storage lock.</p>
---	--

	<p>Master Lock 5400D Shackle Model Key Storage Lock Box Instructions</p> <p>Detailed instructions for using, setting a new combination, and hanging the Master Lock 5400D Shackle Model key storage lock box. Learn how to operate the combination lock and secure your keys.</p>
	<p>Master Lock Key Safe Troubleshooting Guide</p> <p>Step-by-step troubleshooting guide for Master Lock key safes, covering opening, closing, and resetting combinations.</p>
	<p>Master Lock Small Digital Combination Lock Box P008EML Instructions</p> <p>This document provides instructions for the Master Lock Small Digital Combination Lock Box, model P008EML. Learn how to install batteries, program user codes, and open the lock box.</p>
	<p>Master Lock 5401EURD Key Safe Instructions</p> <p>Comprehensive instructions for operating, setting a new combination, and wall-mounting the Master Lock 5401EURD key safe. Includes multilingual guidance.</p>
	<p>Master Lock Security Safe Owner's Manual - Models X031ML, X041ML, X055ML, X075ML, X125ML</p> <p>Comprehensive owner's manual for Master Lock security safes (models X031ML, X041ML, X055ML, X075ML, X125ML). Learn how to install batteries, program codes, operate, and troubleshoot your safe.</p>