



[Manuals.plus](#) /

› [Xtreme](#) /

› Xtreme X0063 PTO Clutch Instruction Manual

Xtreme X0063

Xtreme X0063 PTO Clutch Instruction Manual

Model: X0063

Brand: Xtreme

1. INTRODUCTION

This manual provides essential information for the Xtreme X0063 PTO (Power Take-Off) Clutch. This component is designed for use in various lawn and garden equipment, specifically compatible with certain Ingersoll, Bobcat, Bunton, and Woods Z Turn models. The X0063 PTO Clutch is engineered for high torque transmission, aiming to reduce overheating and premature failure in heavy-duty lawn care applications. Please read this manual thoroughly before installation and operation to ensure proper function and longevity of the product.



Figure 1.1: Main view of the Xtreme X0063 PTO Clutch, showing the main body, pulley, and wire harness.

2. PRODUCT FEATURES

The Xtreme X0063 PTO Clutch incorporates several advanced features for enhanced performance and durability:

- **Cool Coil Technology:** Designed to dissipate heat efficiently, preventing overheating.
- **High Temperature Bearing Upgrade:** Features a highly engineered bearing with a proprietary blend of high-temperature grease and harder races to extend bearing life.
- **Replaceable Pulley Bearing:** Allows for easier maintenance and extended service life.
- **Super Smooth "Xtreme Precision" Machined Pulley:** CNC machined billet pulleys are stronger, quieter, smoother, and help maintain stable and faster blade speeds.
- **3 Layer "Xtreme TOUGH" Integrated, Water Tight, Impact resistant Wire Harness:** Provides superior protection for electrical connections.
- **Stainless Steel Rivets:** Premium grade stainless steel brake rivets withstand rigorous conditions better than aluminum or copper rivets.

- **High Torque Transmission:** Delivers high torque, reducing over-heating and premature failure for heavy-duty usage.

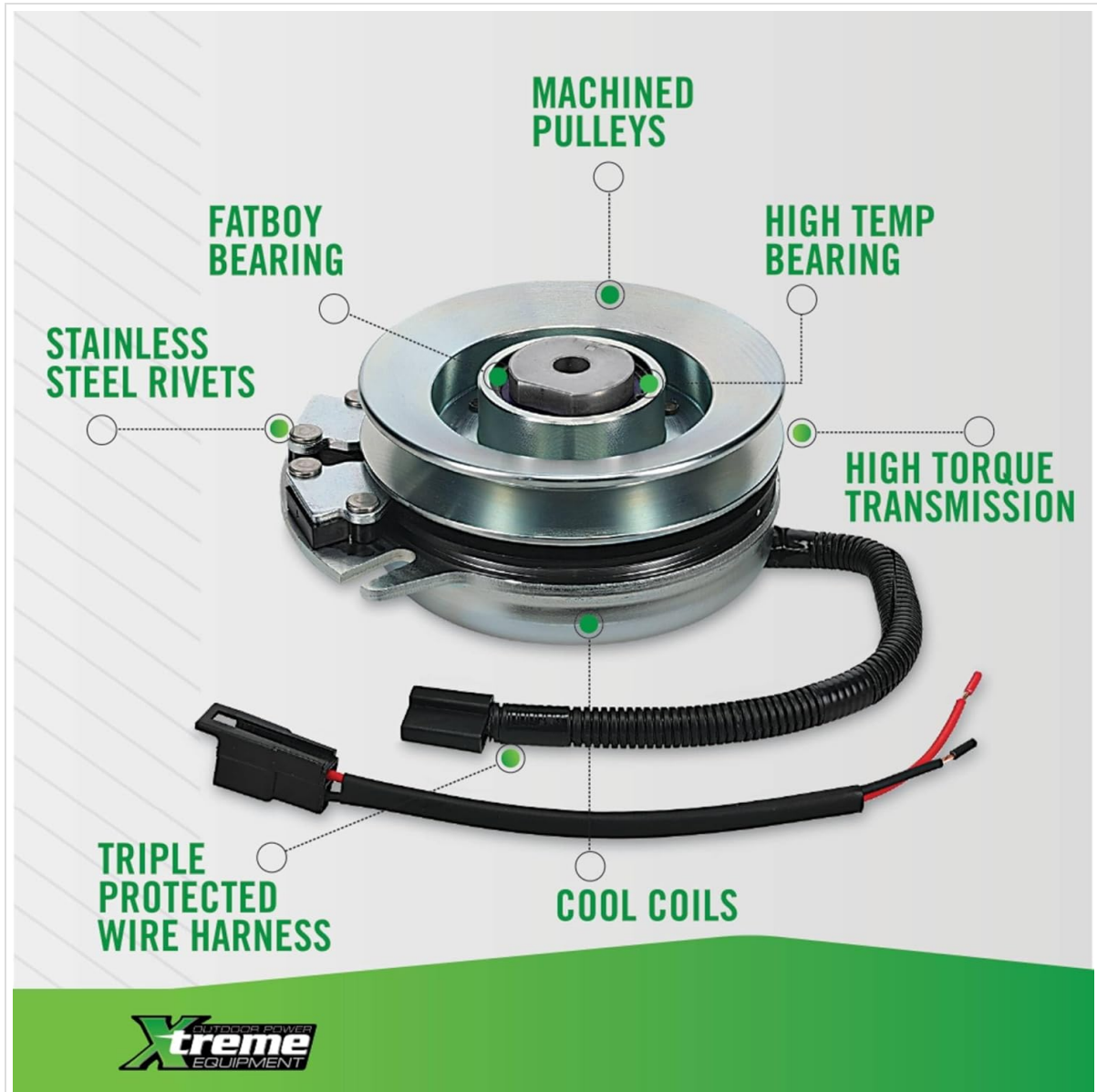


Figure 2.1: Diagram highlighting key features of the Xtreme PTO Clutch, including machined pulleys, bearings, rivets, wire harness, and cool coils.

PTO CLUTCHES

High Torque Transmission:

Xtreme PTO (Power Take-Off) clutches deliver high torque, reducing over-heating and premature failing for heavy-duty lawn care usage.

X OUTDOOR POWER
xtreme
EQUIPMENT



Figure 2.2: Explanation of the High Torque Transmission feature, emphasizing its role in reducing overheating and premature failure.

STAINLESS STEEL RIVETS

Premium grade stainless steel brake rivets withstand rigorous conditions better than cheaper aluminum or copper rivets used on some PTO clutches.

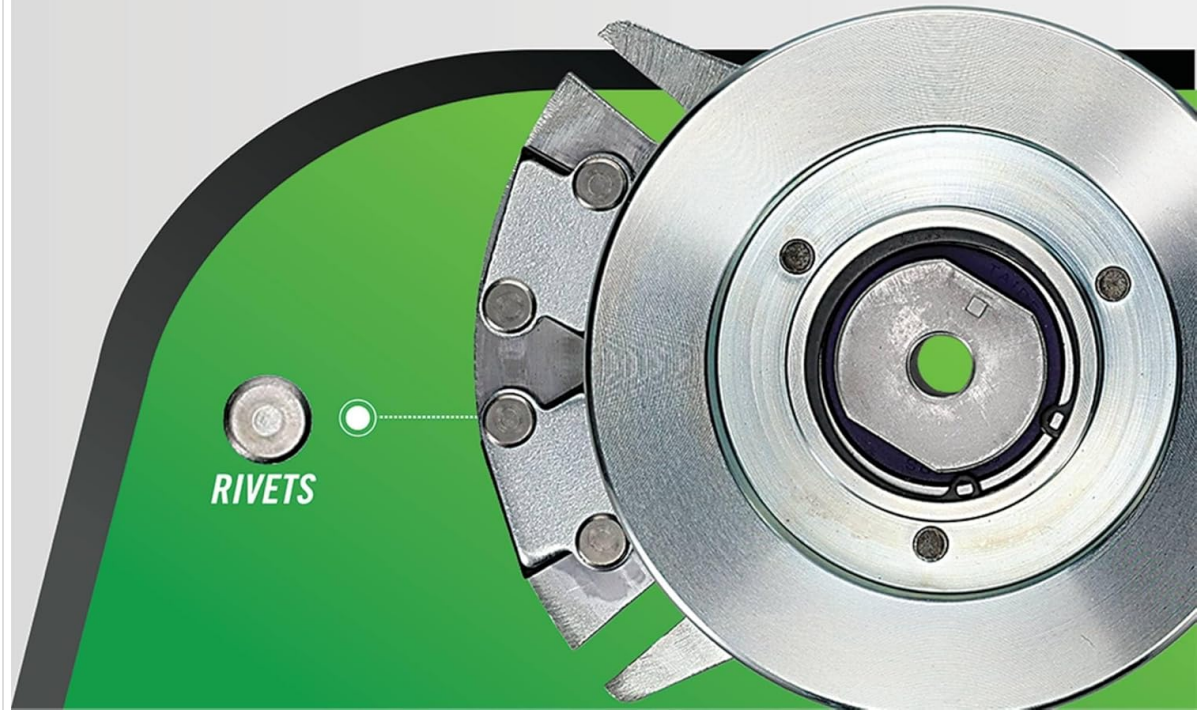
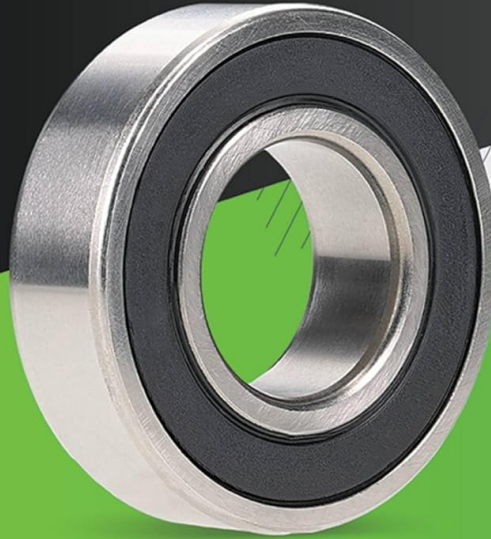


Figure 2.3: Detail on the premium grade stainless steel brake rivets, highlighting their durability compared to other materials.

PTO

CLUTCHES



FATBOY BEARING

Xtreme's FatBoy series extends the bearing life for longer and more reliable service life.

Figure 2.4: Description of the FatBoy series bearing, designed to extend bearing life for longer and more reliable service.

MACHINED PULLEYS



CNC machined billet pulleys are stronger, quieter, and smoother, and maintain stable and faster blade speeds.

Figure 2.5: Information on CNC machined billet pulleys, noting their strength, quiet operation, smoothness, and ability to maintain stable blade speeds.



HIGH TEMP BEARING



A highly engineered bearing with a proprietary blend of high-temperature grease and harder races combine to extend the bearing life.

Figure 2.6: Details on the high-temperature bearing, engineered with a proprietary blend of grease and harder races for extended life.

3. SETUP

Proper installation of the PTO clutch is crucial for its performance and safety. It is highly recommended that installation be performed by a qualified professional or an experienced technician. Incorrect installation can lead to damage to the clutch, the equipment, or personal injury.

- **Safety First:** Always disconnect the battery and ensure the equipment is turned off and secured before beginning any installation work.
- **Compatibility Check:** Verify that the X0063 PTO Clutch is the correct replacement part for your specific equipment model. Refer to the 'Compatibility' section of this manual.
- **Tools Required:** Gather all necessary tools for removal of the old clutch and installation of the new one. This typically includes wrenches, sockets, and possibly specialized pullers.
- **Mounting:** Ensure the clutch is mounted securely and correctly aligned with the crankshaft and pulley system. Follow the equipment manufacturer's torque specifications for all fasteners.
- **Wiring:** Connect the wire harness according to the equipment's electrical diagram. Ensure

connections are secure and protected from moisture and abrasion.

4. OPERATING

Once installed, the PTO clutch operates as an integral part of your equipment's power transmission system. Its primary function is to engage and disengage power to attachments such as mower blades or other implements.

- **Engagement:** Engage the PTO clutch smoothly. Avoid sudden or harsh engagement, especially at high engine RPMs, as this can stress the clutch and other components.
- **Disengagement:** Disengage the PTO when the attachment is not in use or when transporting the equipment.
- **Monitoring:** Pay attention to any unusual noises, vibrations, or smells during operation, which could indicate a problem with the clutch or related components.
- **Overload Protection:** The clutch is designed to handle specific torque loads. Avoid operating the equipment in conditions that could excessively overload the clutch, such as attempting to cut extremely thick or wet grass at too high a speed.

5. MAINTENANCE

Regular maintenance helps ensure the longevity and reliable performance of your Xtreme PTO Clutch.

- **Regular Inspection:** Periodically inspect the clutch for signs of wear, damage, or loose connections. Check the wire harness for any cuts or abrasions.
- **Bearing Check:** Listen for any unusual noises from the bearing. While the X0063 features a high-temperature bearing, extreme conditions can still affect its lifespan. The replaceable pulley bearing facilitates service.
- **Cleanliness:** Keep the clutch area free from debris, grass clippings, and dirt, which can interfere with its operation and heat dissipation.
- **Belt Tension:** Ensure the drive belt connected to the clutch maintains proper tension. Incorrect tension can lead to premature wear of the clutch or belt slippage.
- **Professional Service:** For any complex issues or if you are unsure about a repair, consult a qualified service technician.

6. TROUBLESHOOTING

If you encounter issues with your PTO clutch, consider the following common problems and potential solutions:

- **Clutch Not Engaging:**
 - Check electrical connections to the clutch. Ensure they are secure and free of corrosion.

- Verify the PTO switch is functioning correctly.
- Inspect the wire harness for damage.
- Check for proper voltage supply to the clutch.

- **Clutch Slipping or Weak Engagement:**

- Inspect the drive belt for wear or incorrect tension.
- Check for excessive debris or rust on the clutch surfaces.
- The clutch may be worn and require replacement.

- **Unusual Noises (Grinding, Squealing):**

- Could indicate a worn bearing.
- Check for foreign objects caught in the clutch mechanism.
- Ensure all mounting bolts are tight.

- **Overheating:**

- Ensure adequate airflow around the clutch for cooling.
- Verify the clutch is not being overloaded.
- Check for proper belt tension.

If troubleshooting steps do not resolve the issue, it is advisable to consult a professional service technician.

7. SPECIFICATIONS

Specification	Value
Description	PTO Clutch
Crankshaft Diameter	1.125 inches
Pulley Diameter	6.000 inches
Rotation	Clockwise
Compatible Belt Size	1/2" or 5/8" Belt
Xtreme Torque	125 ft. lbs.
Product Dimensions	11 x 9 x 6 inches
Item Weight	14 pounds
Manufacturer	Outdoor Power Xtreme Equipment

8. COMPATIBILITY

The Xtreme X0063 PTO Clutch is compatible with and a replacement for the following models and part numbers:

- **Bobcat:** 2722016
- **Bunton:** 2722016
- **Ingersoll:** 2722016
- **Jacobsen:** 2722016, 33-132
- **Prime:** 7-06290
- **Ransomes:** 2722016
- **Sears Craftsman:** 2722016, 255-455
- **Warner:** 5219-14
- **Woods:** 2722016

Also compatible with/replacement for specific models:

- **Bobcat - Bunton - Ransomes:** 942218E and 942218F 19hp Kawasaki, 942219E and 942219F 26hp Briggs, Bobcat Leo Plus Series, Bobcat Leo Series, Bunton Z Turn 52", Bunton Z Turn 61", Estate Series 218, 219, 220, Estate Series 225, 226, 227, ZT Series Mowers
- **Ingersoll - Jacobsen:** Most Z Turn 52" & 61"
- **Woods:** ME1952K, MZ1952K, ME2052B, MZ2561K, MZ2761, RZ1848B, RZ2052B, RZ2552BE

9. IMPORTANT INFORMATION

Xtreme Mower Clutches is a registered trademark of Extreme Mower Clutches Inc. (XMCI) of Boca Raton Florida. XMCI does not imply any association or affiliation with any OEM Manufacturer including Warner Electric, Ogura Industrial Corp., John Deere, Exmark/Toro, Hustler, Husqvarna, Cub Cadet, or any of its associates or affiliates, trademarks or copyrights. XMCI also states "OEM Upgrade" or "Warner Upgrade" only refers to the billet pulley, the use of stainless steel braking rivets, replaceable pulley bearing, Xtreme wire protection system, and Cool coil technology, most of which are unique to the Xtreme Mower Clutch product line.

10. WARRANTY

For specific warranty terms and conditions regarding your Xtreme X0063 PTO Clutch, please refer to the documentation provided at the time of purchase or contact Outdoor Power Xtreme Equipment directly. Warranty coverage typically addresses manufacturing defects and material flaws under normal use and service.

11. SUPPORT

Should you require technical assistance, have questions about installation, or need to inquire about parts, please contact Outdoor Power Xtreme Equipment customer support. For more information and to explore

other products, you may visit the official Xtreme store:

[Visit the Xtreme Store](#)

© 2024 Outdoor Power Xtreme Equipment. All rights reserved.