

[Manuals.plus](#) /

› [VIVOSUN](#) /

› VIVOSUN Automatic Condensate Removal Pump User Manual

VIVOSUN CP-0001

VIVOSUN Automatic Condensate Removal Pump User Manual

Model: CP-0001 | Brand: VIVOSUN

1. PRODUCT OVERVIEW

The VIVOSUN Automatic Condensate Removal Pump is designed for efficient and reliable removal of condensate from various HVAC and refrigeration equipment. Its compact design and automatic operation make it suitable for both home and commercial applications.

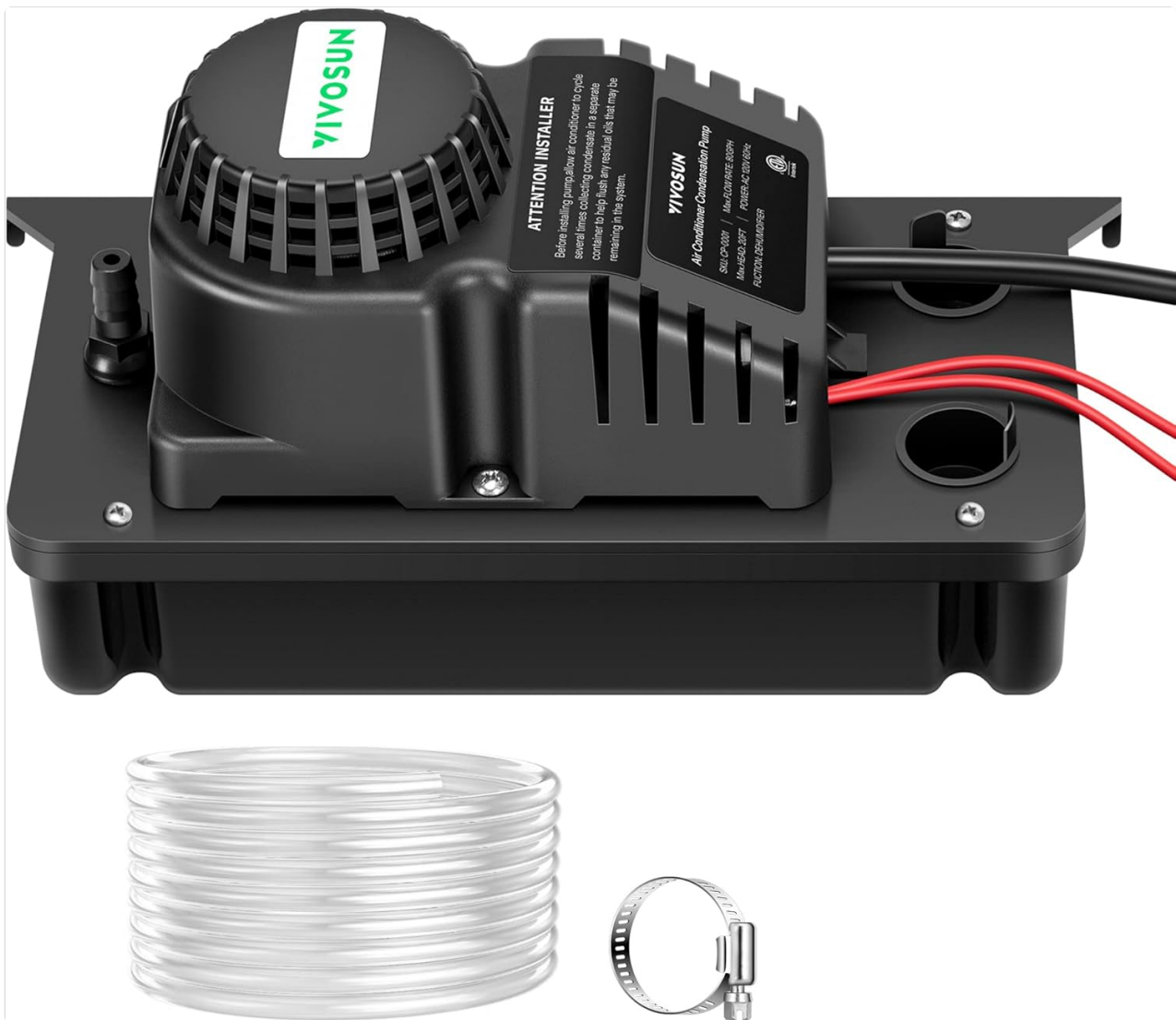


Image: The VIVOSUN Automatic Condensate Removal Pump, showcasing its main unit, clear tubing, and a hose clamp.

Key Features:

- **Enhanced Performance:** Operates at 115 volts/60 Hz, 60 watts, with a maximum flow rate of 80 GPH and a maximum height of 20 feet. Its compact size (5"x11"x7") and 10ft power cord with 6.1m PVC hose offer flexibility and ease of use.
- **High-Quality Materials:** Features a lightweight, durable ABS tank, a highly efficient copper-core motor with good heat dissipation, and treated coils to resist heat and moisture, preventing rusting.
- **Automatic Operation:** Equipped with a built-in safety switch for external alarm connection and automatic power shut-off to prevent overflow. A built-in float senses water levels for automatic start and stop.
- **Excellent Craftsmanship:** Includes a non-reverse ball to prevent water backflow, a securely attached impeller, and two wiring methods for diverse needs. A foot pad reduces noise and vibration, offering non-slip and hanging installation options.
- **Multiple Applications:** CETL-certified for US and Canadian standards, suitable for air conditioners, dehumidifiers, ice machines, furnaces, condensing boilers, and other equipment. Features two inlets for simultaneous connection of two devices.

2. SPECIFICATIONS

Specifications

- Specs: 115Volts/60Hz
- Max. Height: 20Ft
- Cable Length: 10Ft (18AWG)
- Max. Flow Rate: 80GPH
- Discharge: 3/8"
- Product Size: 10.8" x 4.7" x 5.5"



Image: Detailed specifications and dimensions of the VIVOSUN Condensate Pump.

Specification	Value
Brand	VIVOSUN
Model Number	CP-0001
Color	Black
Material	Acrylonitrile Butadiene Styrene (ABS)
Product Dimensions (L x W x H)	10.8" x 4.7" x 5.5"
Item Weight	5.57 pounds
Power Source	Corded Electric
Voltage	115 Volts

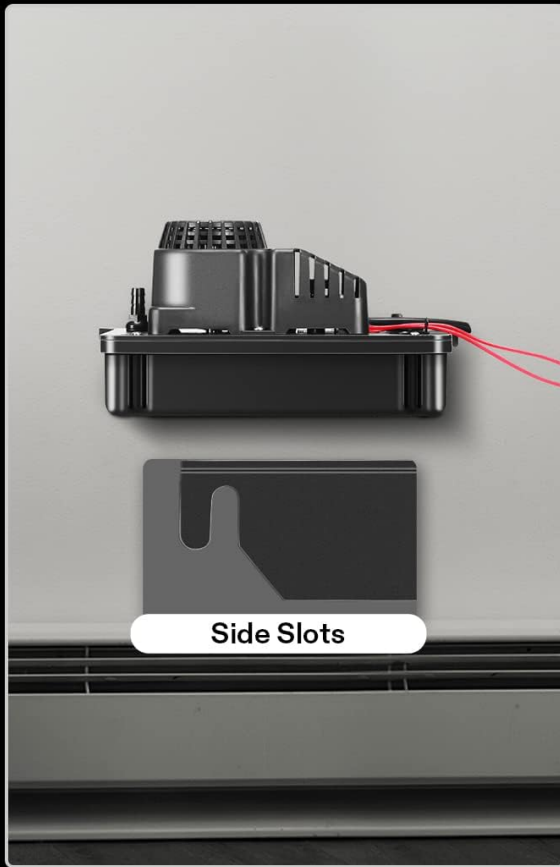
Specification	Value
Frequency	60 Hz
Max. Flow Rate	80 GPH
Max. Lifting Height	20 Feet
Horsepower	1/30 HP
Power Cord Length	10 ft
PVC Hose Length	6.1 m
Discharge Size	3/8"
Certifications	CETL-certified (US and Canadian standards)

3. SETUP AND INSTALLATION

Proper installation is crucial for the optimal performance and longevity of your condensate pump. Follow these steps carefully.

Installation Methods:

2 Methods of Installation



Can be hung on a wall for use



Can be used on the ground

Image: The pump can be hung on a wall using its side slots or placed directly on the ground.

- **Wall-Mounted Installation:** Utilize the integrated side slots on the pump's base to securely hang it on a wall near the condensate source. Ensure the mounting surface is stable and level.
- **Ground Placement:** The pump can also be placed directly on a flat, stable surface on the ground. The integrated foot pads help reduce noise and vibration.

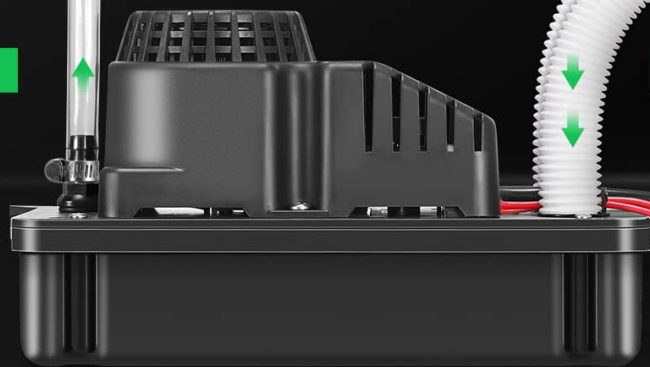
Hose Connections:



FOOT PAD

Suppress vibration, reduce noise, non-slip and will not produce scratches

x1
Out



x2
In

20'

Length of the hose

1"

Diameter of the hose

0.4"

Inner diameter of hose

0.5"

Outside diameter of hose

Image: The pump features two inlet ports for condensate collection and one outlet port for discharge. Ensure proper hose diameter for secure connections.

- Connect the condensate drain line(s) from your equipment to the pump's inlet ports. The pump supports two inlets for simultaneous operation.
- Connect the provided PVC hose to the pump's outlet port. Ensure the hose is routed to a suitable drain location, allowing for proper gravity flow or discharge height.
- The outlet features a non-reverse ball to prevent water backflow.

Electrical Wiring:

The pump offers two wiring methods to meet diverse needs:

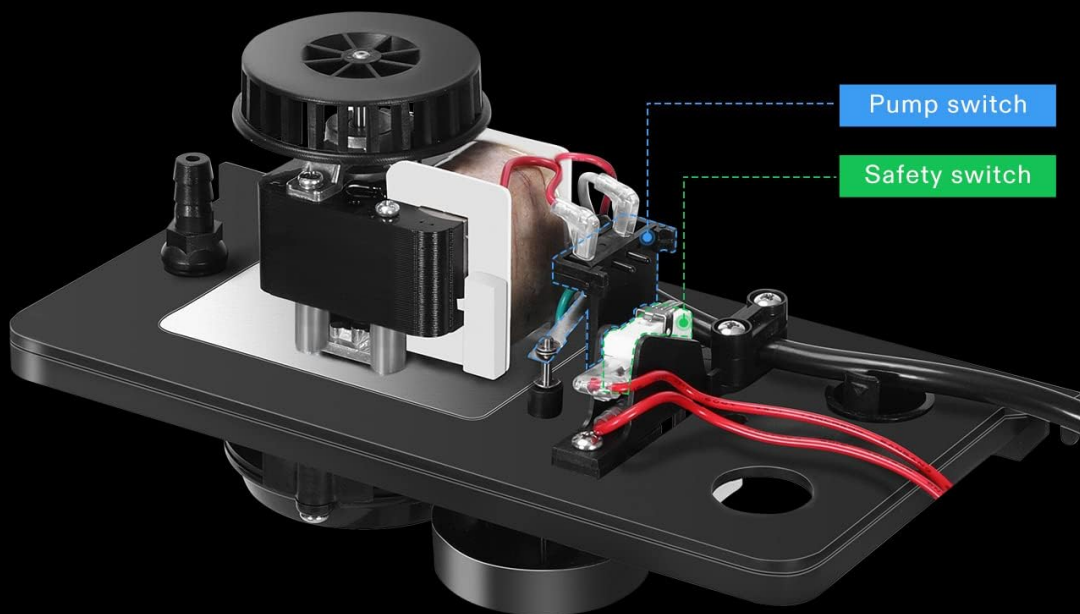
- **Wiring Method A (Alarm Connection):** One wire is connected to COM (Common) and the other to NC (Normally Closed). This configuration is typically used for connecting to an external alarm system, which will activate if the pump overflows. The product is wired in Type A by default.
- **Wiring Method B (Condensing Equipment):** One wire is connected to COM (Common) and the other to NO (Normally Open). This method is commonly used for direct connection to condensing equipment, allowing the pump to control the equipment's operation based on water levels.

4. OPERATING INSTRUCTIONS

The VIVOSUN Automatic Condensate Removal Pump is designed for automatic operation, requiring minimal user intervention once installed correctly.

Automatic Operation

A built-in safety switch that can be connected to an external alarm and automatically shuts off power when necessary to prevent overflow



The built-in float can sense the water level according to the water level and start and stop automatically

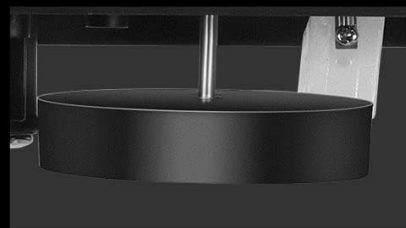


Image: Illustration of the pump's automatic operation, highlighting the float sensor, pump switch, and safety switch.

- **Automatic Water Level Sensing:** The built-in float mechanism senses the water level within the pump's reservoir.
- **Automatic Start/Stop:** When the condensate water reaches a predetermined level, the float activates the pump switch, initiating the pump to discharge the water. Once the water level drops, the pump automatically shuts off.
- **Safety Shut-off:** In the event of an unusually high water level, indicating a potential overflow, the safety switch is activated. This switch can be wired to an external alarm or to shut off the connected equipment, preventing water damage.

- Ensure the pump is connected to a stable power source (115 Volts/60Hz) as per the specifications.

5. MAINTENANCE

Regular maintenance ensures the efficient and long-term operation of your VIVOSUN condensate pump.

Product Features

Cover

Prevent dust and pollutants from entering and enhance heat dissipation

Copper Motor

It is highly efficient with good heat dissipation and a long service life

Coils

With dipping paint technology can effectively resist heat and moisture

Water Tank

Made of lightweight and durable ABS material

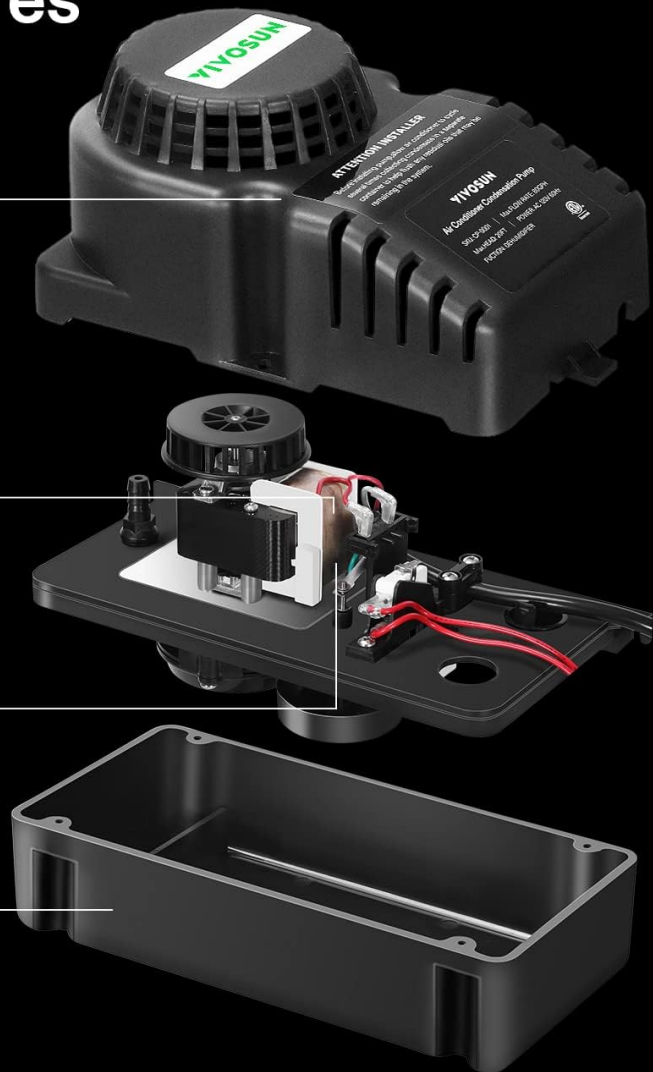


Image: Internal components of the pump, including the cover, copper motor, coils, and water tank, highlighting their robust construction.

- **Regular Cleaning:** Periodically inspect the pump's reservoir and inlet ports for any debris, sludge, or mold buildup. Clean as necessary to prevent blockages and ensure proper float operation.
- **Check Hoses:** Ensure all connected hoses are free from kinks, blockages, or leaks. Verify that the discharge hose is properly routed and not obstructed.
- **Inspect Electrical Connections:** Ensure all electrical connections are secure and free from corrosion.
- **Test Operation:** Occasionally, manually pour a small amount of water into the reservoir to verify that the

pump activates and discharges water correctly.

- **Winterization (if applicable):** If the pump is installed in an area subject to freezing temperatures, ensure it is drained and disconnected during cold periods to prevent damage from frozen water.

6. TROUBLESHOOTING

This section provides solutions to common issues you might encounter with your condensate pump.

Problem	Possible Cause	Solution
Pump does not turn on	No power; Float switch stuck; Motor failure; Clogged inlet	Check power supply; Clean reservoir and free float; Inspect motor (contact support if needed); Clear inlet ports.
Pump runs continuously	Float switch stuck; Check valve issue; Insufficient head height; Air leak in suction line	Clean reservoir and free float; Inspect non-reverse ball; Verify discharge hose routing; Check for loose connections.
Water overflow	Pump not running; Clogged discharge line; Pump capacity exceeded; Safety switch malfunction	Refer to "Pump does not turn on"; Clear discharge hose; Ensure pump capacity matches equipment output; Check safety switch wiring.
Excessive noise or vibration	Debris in impeller; Loose mounting; Air in pump; Worn motor bearings	Clean impeller; Securely mount pump; Bleed air from system; Contact support if noise persists.

7. MULTIPLE APPLICATIONS

The VIVOSUN Automatic Condensate Removal Pump is versatile and can be used with a variety of equipment that produces condensate.



Multiple Applications

Good for air conditioners, dehumidifiers, ice makers, refrigeration equipment, tankless water heaters, and boiler equipment.



Image: Examples of common applications for the VIVOSUN Condensate Pump, including air conditioners, ice makers, and furnaces.

- Air Conditioners
- Dehumidifiers
- Ice Machines
- Furnaces
- Condensing Boilers
- Refrigeration Equipment
- Tankless Water Heaters

8. WARRANTY AND SUPPORT

VIVOSUN products are manufactured to high-quality standards. For specific warranty information and customer

support, please refer to the warranty card included with your product or visit the official VIVOSUN website. Keep your purchase receipt for warranty claims.

For technical assistance or inquiries, please contact VIVOSUN customer service through their official channels.