

Manuals+

[Q & A](#) | [Deep Search](#) | [Upload](#)

[manuals.plus](#) /

› [JBL](#) /

› [JBL Wave Beam Wireless In-Ear Headphones User Manual](#)

JBL JBL Wave Beam

JBL Wave Beam Wireless In-Ear Headphones User Manual

Brand: JBL | Model: JBL Wave Beam (JBLWBEAMWHT)

INTRODUCTION

The JBL Wave Beam wireless in-ear headphones are designed to provide a high-quality audio experience with powerful bass, extended battery life, and durable water and dust resistance. This manual will guide you through the features and functions of your new headphones.



Image: Overview of JBL Wave Beam key features including app support, IP54 rating, ambient sound modes, battery life, quick charge, and deep bass sound.

WHAT'S IN THE BOX

Verify that all the following components are included in your package:

- 1x Pair of JBL Wave Beam In-Ear Headphones
- 1x Charging Case
- 1x USB-C Charging Cable

- 3x Sizes of Ear Tips (Small, Medium, Large)
- 1x Quick Start Guide
- 1x Safety Sheet



Image: Contents of the JBL Wave Beam package, including the earbuds, charging case, USB-C cable, and various ear tip sizes.

SETUP

1. Charging the Headphones and Case

Before first use, fully charge your JBL Wave Beam headphones and charging case. Connect the provided USB-C cable to the charging case and a power source. The indicator lights on the case will show the charging status.

- **Earbuds Playtime:** Up to 8 hours
- **Total Playtime with Case:** Up to 32 hours
- **Quick Charge:** 10 minutes of charging provides 2 hours of playtime.



**UN SON DE HAUTE QUALITÉ
AVEC LE SON JBL
DEEP BASS**



Image: Illustration of the JBL Wave Beam's battery life, indicating 8 hours for earbuds and 24 hours from the charging case, along with the quick charge capability.

2. Bluetooth Pairing

1. Open the charging case. The earbuds will automatically enter pairing mode.
2. On your device (smartphone, tablet, etc.), enable Bluetooth.
3. Select "JBL Wave Beam" from the list of available devices.
4. Once connected, a confirmation sound will play, and the indicator light on the earbuds will change.

3. Fitting the Earbuds

For optimal sound quality and comfort, choose the ear tips that best fit your ears. Experiment with the different sizes provided to find the most secure and comfortable seal.



Image: Diagram illustrating the comfortable fit of the JBL Wave Beam earbuds, highlighting the oval tube design for a secure and sealed fit.

4. JBL Headphones App

Download the JBL Headphones App for additional features and customization. The app allows you to personalize your listening experience, adjust equalizer settings, and manage other functions.

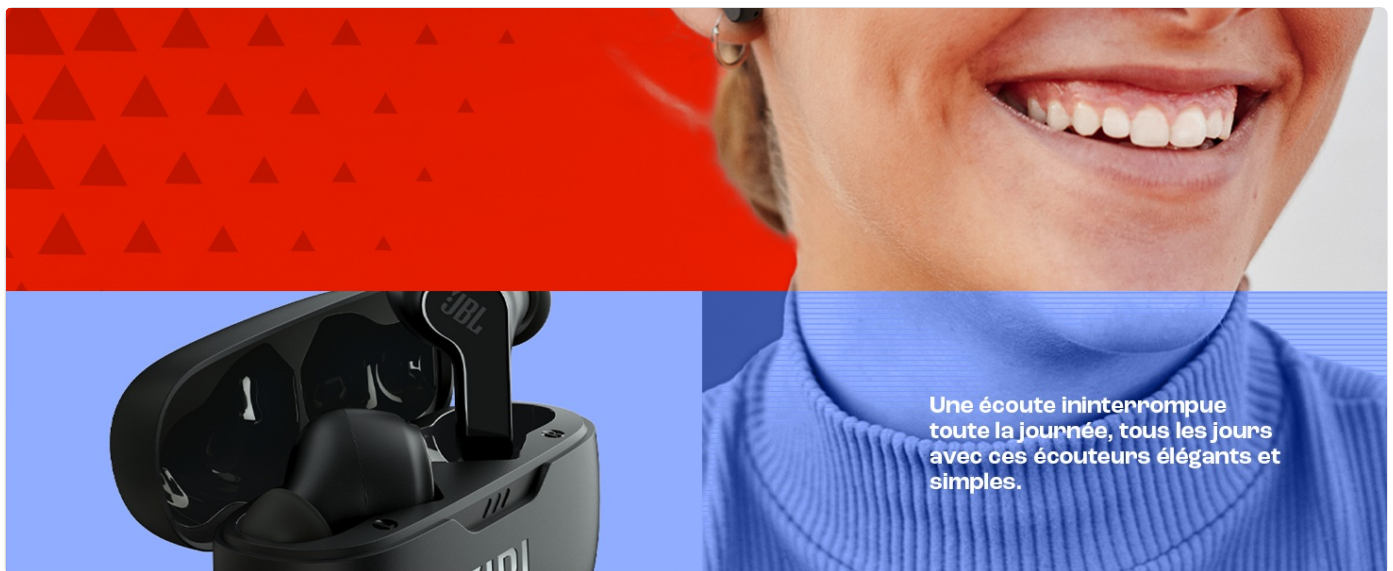


Image: Screenshot of the JBL Headphones App, demonstrating the equalizer feature for sound customization, including options to enhance bass.

OPERATING INSTRUCTIONS

1. Basic Controls

The JBL Wave Beam earbuds feature touch controls for various functions. Refer to the Quick Start Guide for a detailed diagram of touch commands. Common controls include:

- **Play/Pause:** Single tap on either earbud.
- **Next Track:** Double tap on the right earbud.
- **Previous Track:** Triple tap on the left earbud.
- **Answer/End Call:** Single tap on either earbud.
- **Voice Assistant:** Press and hold on either earbud (customizable via app).

2. Ambient Aware & TalkThru

These features allow you to stay connected to your surroundings without removing your earbuds.

- **Ambient Aware:** Increases ambient sounds, allowing you to hear your surroundings while listening to music.
- **TalkThru:** Lowers music volume and amplifies speech, enabling conversations without removing earbuds.

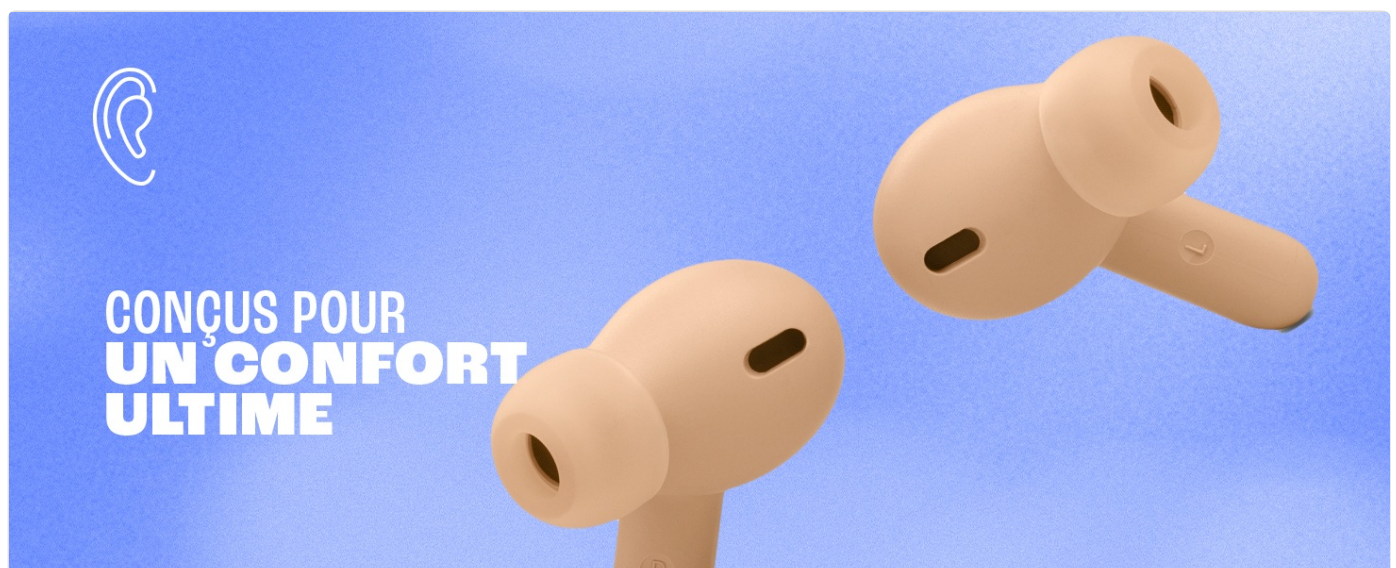


Image: Depiction of Ambient Aware and TalkThru features, showing users interacting with their environment while wearing the earbuds.

3. Making and Receiving Calls

The earbuds support hands-free calling. Use the touch controls to manage calls. VoiceAware technology helps you hear your own voice clearly during calls.

- **Answer/End Call:** Single tap on either earbud.
- **Reject Call:** Press and hold on either earbud.

MAINTENANCE

1. Cleaning

Regularly clean your earbuds and charging case to ensure optimal performance and hygiene. Use a soft, dry cloth. For ear tips, remove them and gently wipe with a damp cloth, then dry thoroughly before reattaching.

2. Storage

When not in use, store the earbuds in their charging case to protect them and keep them charged. Store the case in a cool, dry place away from direct sunlight and extreme temperatures.

3. Water and Dust Resistance

The JBL Wave Beam earbuds are IP54-rated for dust and water resistance, and the charging case is IPX2-rated for splash resistance. This means they are protected against limited dust ingress and splashes of water from any direction. They are not designed for submersion in water.



Image: Visual representation of the JBL Wave Beam earbuds' IP54 dust and water resistance, showing them enduring splashes.

TROUBLESHOOTING

Problem	Possible Cause	Solution
Earbuds not turning on	Low battery	Place earbuds in the charging case and charge fully.

Problem	Possible Cause	Solution
Cannot pair with device	Bluetooth not enabled, earbuds not in pairing mode, or device too far.	Ensure Bluetooth is on. Open case to enter pairing mode. Move device closer. Forget "JBL Wave Beam" from device's Bluetooth list and re-pair.
No sound or low volume	Volume too low, improper fit, or connection issue.	Adjust volume on device and earbuds. Ensure earbuds are properly seated and ear tips provide a good seal. Reconnect Bluetooth.
One earbud not working	Low battery, connection issue, or earbud not properly seated in case.	Ensure both earbuds are charged. Place both earbuds back in the case, close, then reopen to reset connection. Re-pair if necessary.

SPECIFICATIONS

Feature	Detail
Model Name	JBL Wave Beam
Model Number	JBLWBEAMWHT
Connectivity Technology	Wireless (Bluetooth)
Ear Placement	In-Ear
Driver Size	8 mm
Impedance	16 Ohms
Sensitivity	100 dB
Frequency Response	20 Hz - 20 KHz
Battery Type	Lithium-ion (Rechargeable)
Total Playtime	Up to 32 hours (8 hours earbuds + 24 hours case)
Charging Time	10 minutes for 2 hours playtime (Quick Charge)
Water Resistance (Earbuds)	IP54
Water Resistance (Case)	IPX2
Item Weight	58 Grams
Control Type	Touch, Voice Control, Application
Compatible Devices	Most Bluetooth-enabled devices (smartphones, tablets, laptops, smart TVs)

WARRANTY AND SUPPORT

The JBL Wave Beam headphones come with a **2-year manufacturer's warranty**. This warranty covers defects in materials and workmanship under normal use.

For warranty claims, technical support, or further assistance, please visit the official JBL support website or contact their

customer service. Keep your proof of purchase for warranty validation.
Official JBL Website: www.jbl.com/support