

Faszin IN11-B002

Faszin Ionic Salon Hair Dryer (Model IN11-B002) Instruction Manual

Comprehensive guide for safe and effective use of your professional hair dryer.

[Safety Information](#) [Product Overview](#) [Setup](#) [Operating](#)
[Instructions](#) [Maintenance](#) [Troubleshooting](#) [Specifications](#) [Warranty & Support](#)

INTRODUCTION

Thank you for choosing the Faszin Ionic Salon Hair Dryer. This professional blow dryer is designed to provide efficient and effective hair drying and styling with advanced ionic technology. Please read this manual thoroughly before use to ensure proper operation and to maximize the lifespan of your appliance.

IMPORTANT SAFETY INFORMATION

To reduce the risk of electric shock, fire, or injury, always follow basic safety precautions when using electrical appliances. Read all instructions before using this hair dryer.

- **Water Hazard:** Do not use this appliance near bathtubs, showers, basins, or other vessels containing water. If the appliance falls into water, unplug it immediately. Do not reach into the water.
- **Power Source:** Ensure the voltage indicated on the appliance corresponds to your local mains voltage before connecting.
- **Cord Care:** Do not wrap the power cord around the appliance. Do not pull, twist, or bend the cord excessively. Keep the cord away from heated surfaces.
- **Supervision:** Close supervision is necessary when this appliance is used by, on, or near children or individuals with certain disabilities.
- **Maintenance:** Do not attempt to repair or disassemble the appliance yourself. Refer to the "Maintenance" section for cleaning instructions.
- **Attachments:** Only use attachments supplied by the manufacturer.
- **Overheating:** If the hair dryer overheats, it may automatically shut off. Unplug it, allow it to cool down for a few minutes, and check for any obstructions in the air inlet/outlet.

PRODUCT OVERVIEW AND COMPONENTS

Your Faszin Ionic Salon Hair Dryer comes with several components designed for versatile styling.



Image: The Faszin Ionic Salon Hair Dryer shown with its main unit, diffuser, two concentrator nozzles, a wide-tooth comb, and a round brush.

Main Unit Features:

- **AC Motor:** Professional-grade motor for fast drying.
- **Plasma Dual Ionic System & Blue Light Technology:** Hydrates hair with 40-90 million negative ions/cm³, enhancing shine and smoothness while reducing frizz.
- **WIND-PRO Airflow Technology:** Delivers wind speed up to 29m/s for faster drying.
- **Control Switches:** Separate switches for speed (mild/fast) and heat (high/medium/low), plus a dedicated Cool Shot button.
- **Removable Filter:** For easy cleaning and maintenance.
- **Hanging Loop:** For convenient storage.

Included Accessories:

- **Diffuser:** Designed to accelerate the drying of curly and wavy hair, enhancing natural texture.
- **Styling Nozzle (Concentrator):** Provides focused airflow for precision styling and straightening.

- **Smooth Nozzle (Wide-Tooth Comb):** Ideal for afro hair care, helping to detangle and smooth.
- **Round Brush:** For creating volume and smooth styles.
- **Flat Comb:** For general styling and detangling.



Image: Detailed dimensions of the hair dryer, diffuser, concentrator nozzles, round brush, and flat comb.

SETUP AND FIRST USE

1. **Unpack:** Carefully remove all components from the packaging.
2. **Inspect:** Check the appliance and accessories for any signs of damage. Do not use if damaged.
3. **Attach Accessories:** Select the desired attachment (diffuser, styling nozzle, or smooth nozzle). Align the attachment with the front of the hair dryer and push it firmly until it clicks into place. Ensure it is securely attached before use.
4. **Power Connection:** Plug the power cord into a suitable electrical outlet.

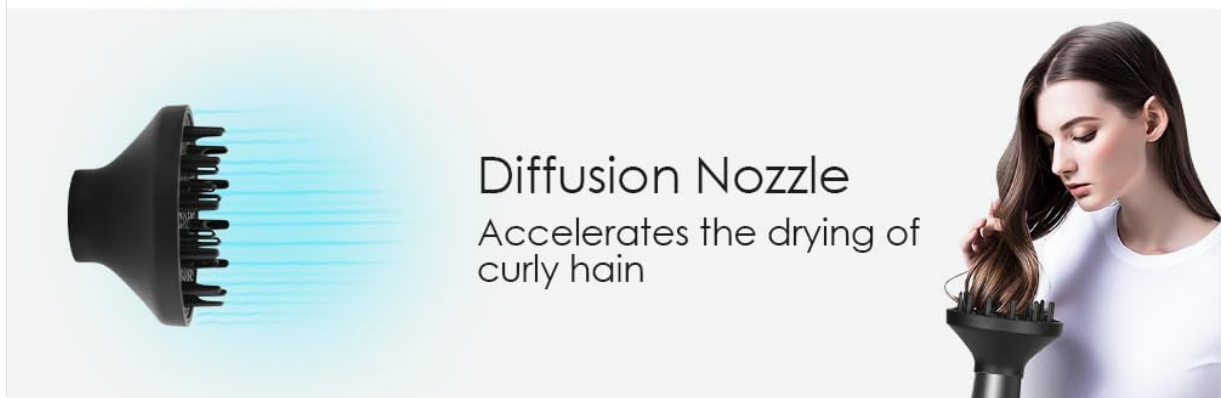


Image: Visual guide demonstrating how to attach and use the Styling Nozzle, Smooth Nozzle, and Diffusion Nozzle for different hair types and styles.

OPERATING INSTRUCTIONS

The Faszin hair dryer offers 7 drying modes through its speed, heat, and cool shot settings.

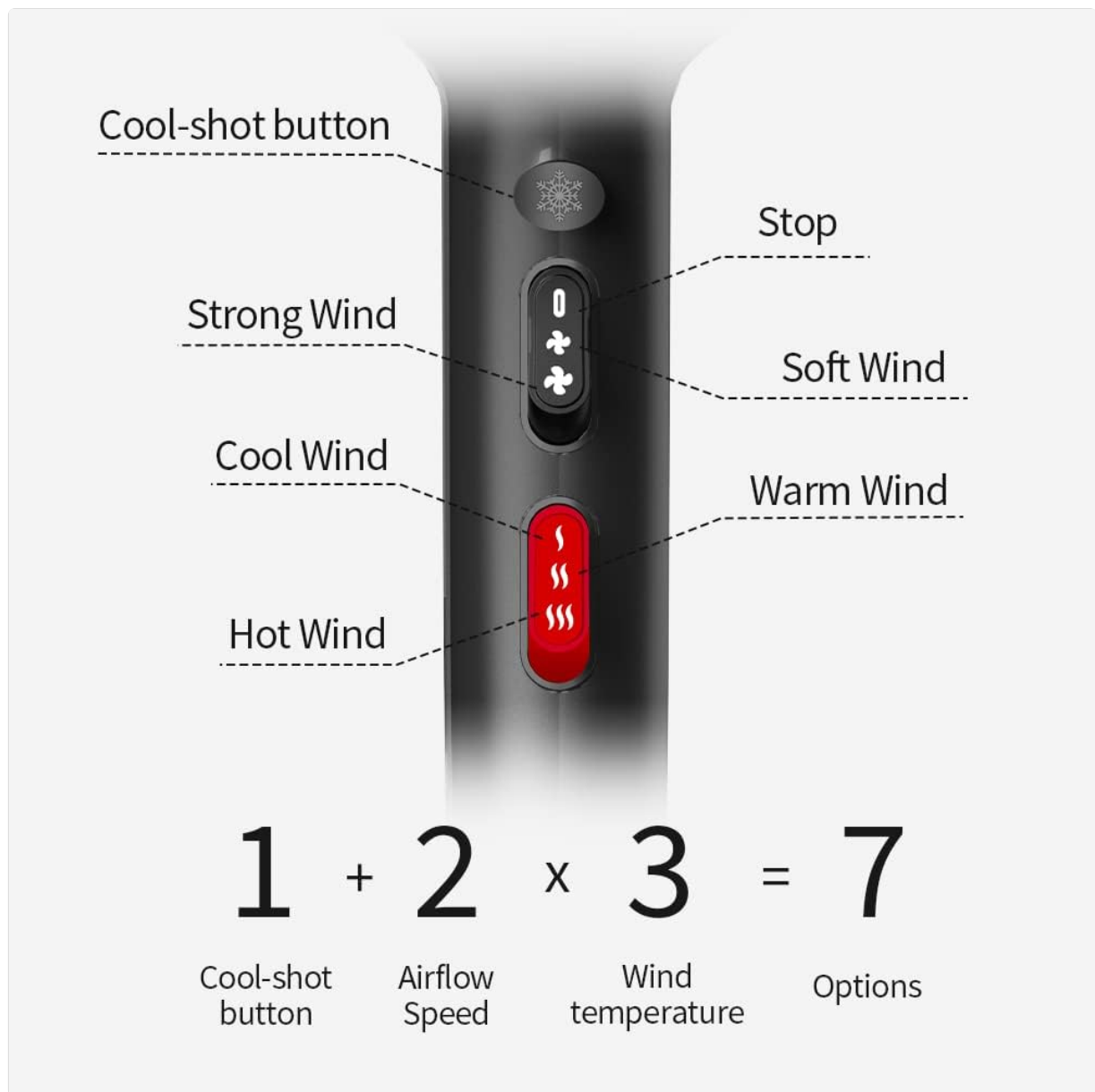


Image: Diagram illustrating the hair dryer's control switches for speed (Strong Wind, Soft Wind), heat (Hot Wind, Warm Wind, Cool Wind), and the Cool Shot button.

Power and Speed Settings:

- **Power On/Off:** Use the main power switch to turn the dryer on or off.
- **Speed Control:** Adjust the speed switch to select between "Mild" (soft wind) and "Fast" (strong wind) airflow.

Heat Settings:

- **Heat Control:** Use the heat switch to select "Low" (cool wind), "Medium" (warm wind), or "High" (hot wind) temperature.
- **Cool Shot Button:** Press and hold the dedicated cool shot button for an instant burst of cool air. This helps to set your style and add shine.

Using Attachments:

- **Diffuser:** For curly or wavy hair, attach the diffuser. Use a low speed and medium heat setting. Gently cup sections of your hair with the diffuser, lifting towards the scalp to enhance curls and add volume.
- **Styling Nozzle (Concentrator):** For straight or smooth styles, attach the styling nozzle. Use a

medium to high heat setting with appropriate speed. Direct the airflow down the hair shaft while brushing with the included round brush or flat comb for a sleek finish.

- **Smooth Nozzle (Wide-Tooth Comb):** For detangling and smoothing afro hair, attach the smooth nozzle. Use a medium heat and speed setting. Comb through sections of hair, directing the airflow to dry and stretch the hair.

Your browser does not support the video tag.

Video: Demonstration on how to effectively use the diffuser attachment with the Faszin hair dryer to enhance curls.

Ionic Technology Benefits:

The Plasma dual ionic system releases negative ions that help to break down water molecules faster, reducing drying time. These ions also seal the hair cuticle, locking in moisture, reducing frizz, and increasing shine and smoothness by up to 30%.



Upgraded ion generator
Salon-grade ionic

Faszin
40-90 million
Negative ions/cm ³
4X Softness and care

Others
10 million
Ion/cm ³
or less

Image: Comparison illustrating the higher negative ion output of the Faszin hair dryer (40-90 million ions/cm³) compared to other models (10 million ions/cm³ or less).

40-90 Million Negative Ions
30% more shine, softness



Image: Before and after photos demonstrating the effect of the ionic technology, showing significantly reduced frizz and increased smoothness and shine without heat damage.

MAINTENANCE AND CLEANING

Regular cleaning ensures optimal performance and extends the life of your hair dryer.

1. **Unplug:** Always unplug the hair dryer from the power outlet before cleaning.
2. **Cool Down:** Allow the appliance to cool completely before handling or cleaning.
3. **Clean Exterior:** Wipe the exterior of the hair dryer with a soft, damp cloth. Do not use abrasive cleaners or solvents.
4. **Clean Air Filter:** The hair dryer features a removable filter for easy cleaning. Gently twist or pull off the rear filter cover. Use a soft brush or vacuum cleaner to remove any accumulated dust, lint, or hair from the filter screen. Reattach the filter cover securely.
5. **Storage:** Store the hair dryer in a cool, dry place, away from moisture and direct sunlight. Use the hanging loop for convenient storage.

TROUBLESHOOTING

If you encounter any issues with your Faszin hair dryer, refer to the following common problems and

solutions:

- **No Power:**

- Check if the power cord is securely plugged into a working outlet.
- Verify that the power switch on the dryer is in the "On" position.
- Check your household circuit breaker or fuse box.

- **Overheating and Shut-off:**

- The dryer may have an automatic overheat protection feature. Unplug the dryer and allow it to cool down for at least 10-15 minutes.
- Clean the air inlet and outlet grilles, especially the removable filter, to ensure no obstructions are blocking airflow.

- **Weak Airflow:**

- Ensure the air filter is clean and free of debris.
- Check that no objects are obstructing the air intake or outlet.

- **Unusual Noise:**

- Unplug the dryer and check the air intake for any foreign objects that might be caught in the fan.
- If the noise persists after checking for obstructions, discontinue use and contact customer support.

If the problem persists after trying these solutions, please contact Faszin customer support for assistance.

PRODUCT SPECIFICATIONS

Brand	Faszin
Model Number	IN11-B002
Product Dimensions	10.8 x 9.3 x 3.5 inches
Item Weight	2.92 Pounds
Power Source	Corded Electric
Wattage	1600 Watt-hours
Material	Plastic
Color	Black
Special Features	Ionic Technology, 2 Speed Settings, 3 Heat Settings, Cool Shot Button, Removable Filter, Multiple Attachments (Diffuser, 2 Concentrators, Wide-Tooth Comb, Round Brush, Flat Comb)

WARRANTY AND CUSTOMER SUPPORT

For warranty information or customer support, please refer to the documentation included with your product or visit the official Faszin website. Keep your purchase receipt as proof of purchase for any warranty claims.

Manufacturer: Faszin