



[Manuals.plus](#) /

› [MADV](#) /

› [MADV Smart Video Doorbell 2M User Manual](#)

## MADV ML0049GL

# MADV Smart Video Doorbell 2M Instruction Manual

Model: ML0049GL | Brand: MADV

[Product Overview](#)   [What's in the](#)

[Box](#)

[Setup](#)

[Operation](#)

[Maintenance](#)

[Troubleshooting](#)

[Specifications](#)

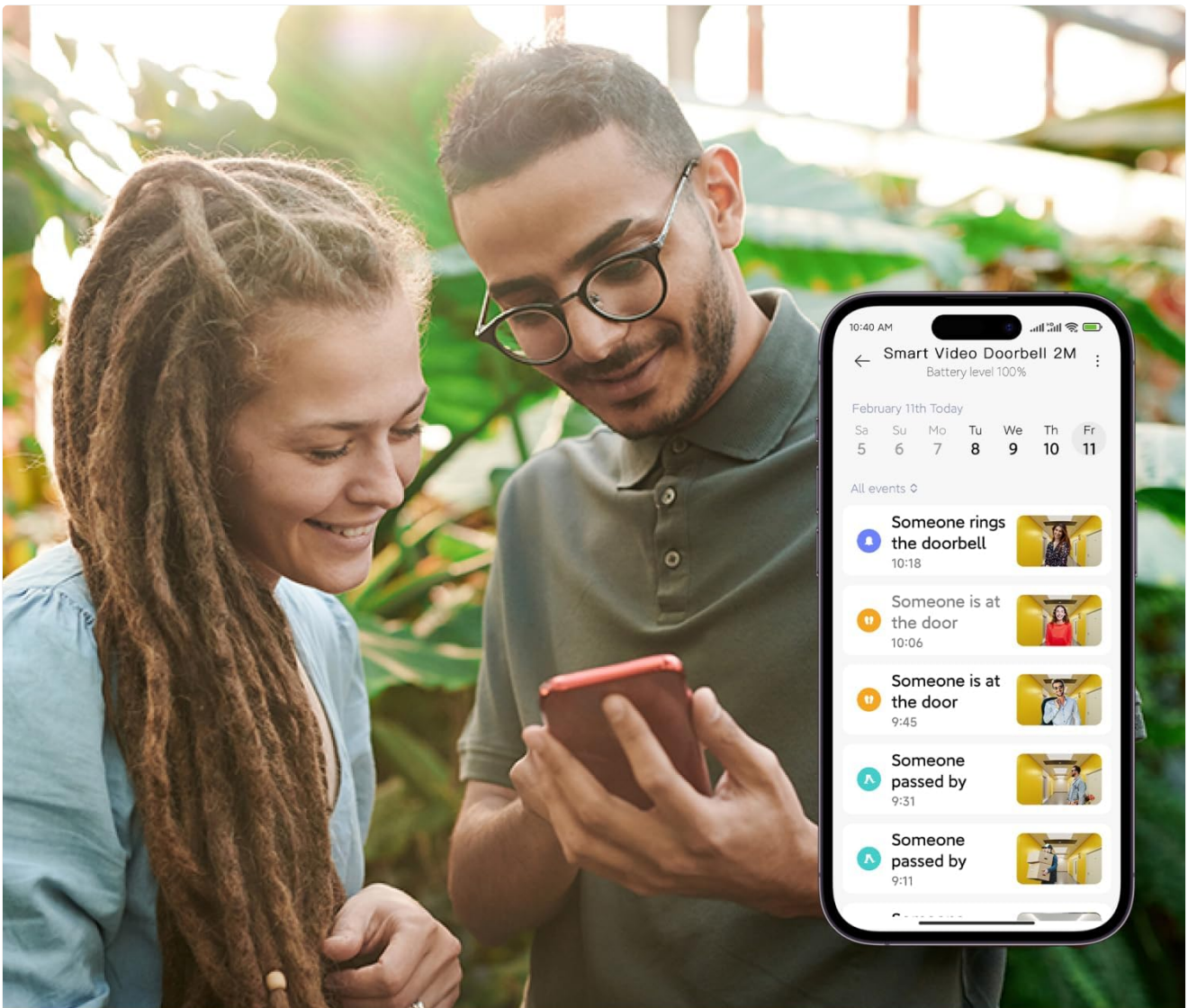
[Warranty & Support](#)

## 1. PRODUCT OVERVIEW

The MADV Smart Video Doorbell 2M provides advanced security features for your home. It offers 2K resolution video, night vision capabilities, and two-way audio communication. Key features include motion detection, a voice changing answering function for privacy, and secure cloud storage for recorded events. A free smart chime is included for indoor notification.

### Key Features:

- **2K HD Imaging:** Ensures a clear view under various lighting conditions.
- **Instant Communication:** Two-way audio and voice changing feature for interacting with visitors.
- **Anti-Theft Protection:** Built-in alarm system notifies you if the doorbell is tampered with.
- **Secure Cloud Storage:** Records motion-detected events for later review.
- **Free Smart Chime:** Offers fourteen ringtones and adjustable volume for indoor alerts.



## Free Cloud Storage

No subscription, MADV will provide free 72-hour circular cloud storage for 5 years.

Image: The MADV Smart Video Doorbell 2M, showcasing its sleek design.

## 2. WHAT'S IN THE BOX

Verify that all components are present in the package:

- Video Doorbell
- Doorbell Chime
- Mounting Base
- Eject Pin
- Attention Sticker
- Manual (this document)
- USB Cable x2
- Wall Plug x4

- Self-Tapping Screw x4

## 1 Remove the glue sealing firm



## 2 Paste the doorbell



## Installation in Seconds

Quick installation without drilling holes.

Image: All components included in the MADV Smart Video Doorbell 2M package.

## 3. SETUP

### 3.1. Device Appearance and Initial Settings

Familiarize yourself with the doorbell and chime components before installation.

Your browser does not support the video tag.

Video: An introduction to the MADV Smart Video Doorbell 2M, showing its components and initial setup steps.

- **Doorbell Front:** Features a microphone, lens, infrared sensor, charging indicator, and doorbell button.
- **Doorbell Top:** Includes a mounting hole.
- **Doorbell Bottom:** Contains the power port and speaker.

- **Doorbell Back:** Features a power on/off switch, alarm trigger switch, reset button, and mounting base attachment points.
- **Chime:** Includes volume buttons, a pairing button, and a sound effect button. It has a Micro-USB power port and a speaker.

### 3.2. App Connection

1. Download the "Mi Home" app from your device's app store.
2. Open the Mi Home app and click the "+" icon to add a new device.
3. Search for "MADV Smart Video Doorbell 2M" and select it.
4. Follow the in-app instructions to reset the doorbell by pressing and holding the reset button on the back until you hear a voice prompt.
5. Connect the doorbell to your Wi-Fi router through the app.
6. Use the doorbell's camera to scan the QR code displayed on your phone screen. Keep the phone approximately 15 cm away from the doorbell.
7. Once "Scanned successfully" is heard, the device will be added.
8. Select a room for the device and optionally rename it.



### Easy to Install & Set Up

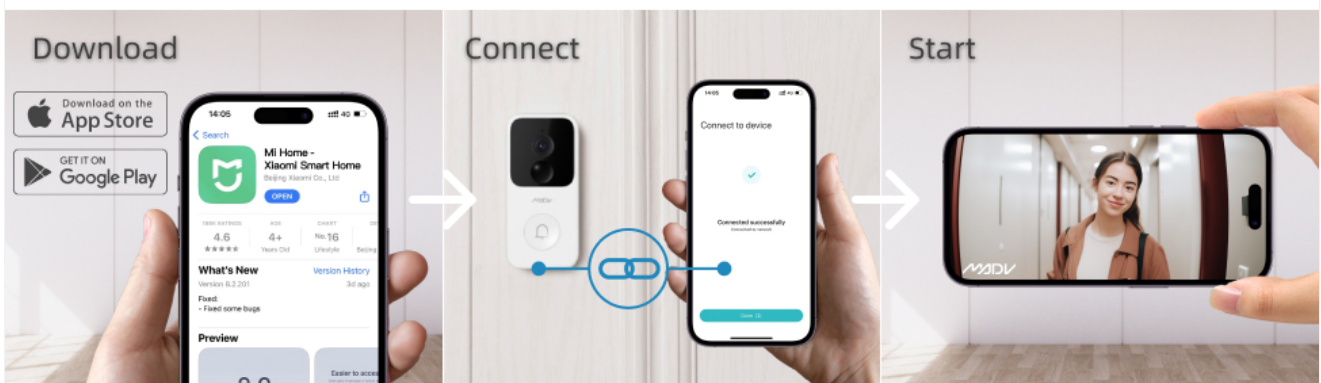


Image: Visual guide for downloading the app, connecting, and starting the doorbell.

### 3.3. Chime Pairing

1. Connect the chime to a power source using the provided USB cable.
2. Short press the pairing button on the chime. You will hear a "Beep".
3. Press the doorbell button to match it with the chime.
4. To adjust the volume, short press the volume button on the chime.
5. To change the ringtone, short press the sound effect button on the chime.

### 3.4. Installation

The recommended installation height for the doorbell is 1.4-1.5 meters (approximately 4.6-4.9 feet) from the ground. Use the real-time footage in the app to confirm the optimal viewing angle before final installation.

### Method One: Adhesive Mounting (No Drilling)

1. Clean the surface where the doorbell will be mounted to ensure it is free of dust and debris.
2. Uncover the double-sided adhesive tape on the back of the mounting base.
3. Stick the mounting base to the determined position on your door frame or wall.
4. Press the mounting base firmly against the surface for 30 seconds to ensure strong adhesion.
5. Attach the doorbell to the mounting base.



## 2K Resolution & Night Vision

Ensures full and clear view of every moment.

Image: Step-by-step guide for adhesive installation, showing removal of glue film and pasting the doorbell.

### Method Two: Screw Mounting (Drilling Required)

1. Choose the appropriate position for the mounting base.
2. Mark the drilling positions using a pencil through the holes on the mounting base.
3. Drill four holes with a diameter of approximately 6mm at the marked positions.
4. Install the four expansion pipes into the drilled holes.

5. Fix the mounting base to the wall using the provided screws.
6. Attach the doorbell to the mounting base in the correct direction.

## 4. OPERATION

### 4.1. Live View and Two-Way Audio

Access the live video feed through the Mi Home app. When a visitor presses the doorbell, you will receive a notification on your smartphone, allowing you to see and speak to them in real-time.

- **Voice Call:** Initiate a voice call with the visitor through the app.
- **Voice Reply:** Use pre-recorded messages or the voice changing feature for privacy.

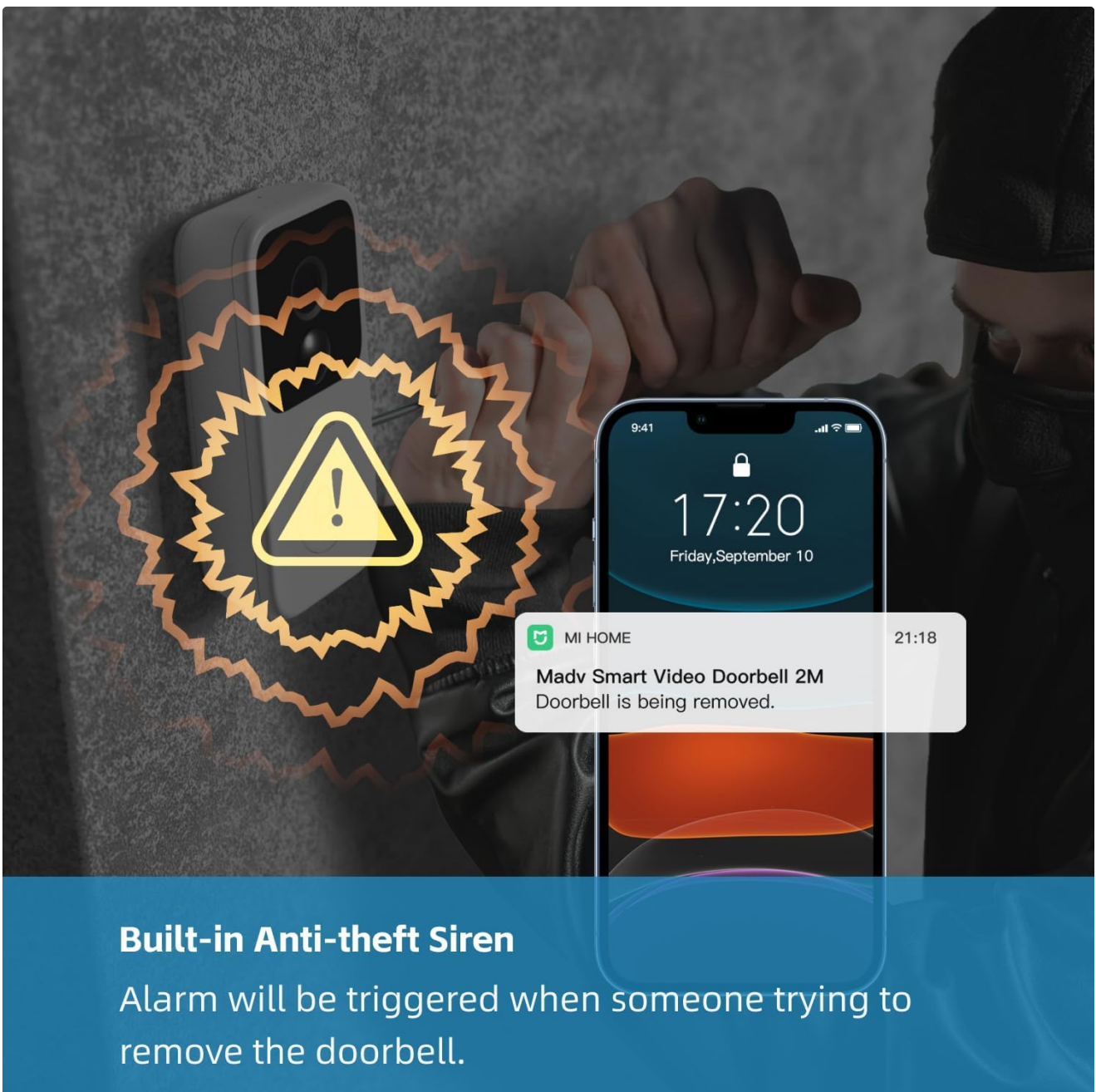
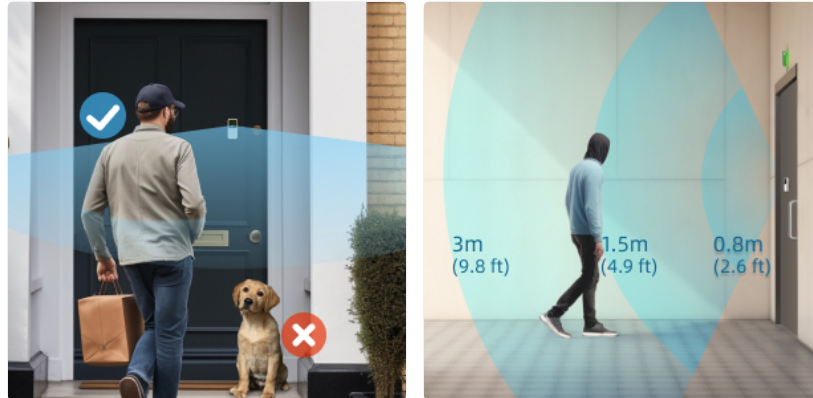


Image: Depicts the two-way audio and voice changer functions of the doorbell.

## 4.2. Motion Detection and Alerts

The doorbell is equipped with smart motion sensing to detect activity at your door. You will receive instant notifications on your phone when motion is detected.

- **Customizable Detection Range:** Adjust the motion detection zones to focus on specific areas and reduce false alerts.
- **Alert Type:** Audio and motion alerts are supported.



Images: Illustrates smart motion sensing and customizable detection range.

## 4.3. Night Vision

The doorbell features night vision technology, ensuring clear video footage even in low-light conditions or complete darkness.

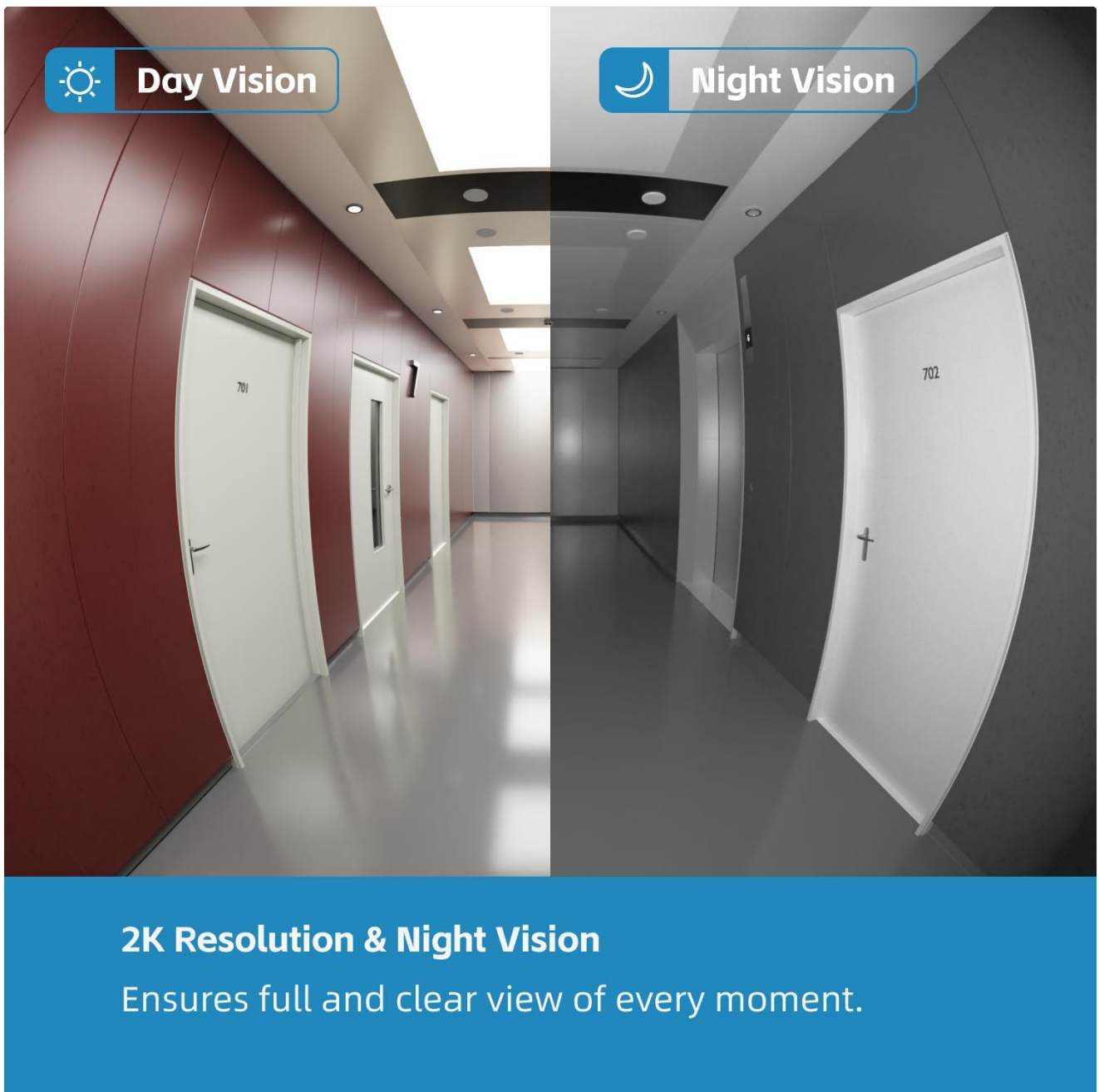


Image: Comparison of day and night vision capabilities of the doorbell.

#### 4.4. Cloud Storage

The MADV Smart Video Doorbell 2M includes free 72-hour circular cloud storage for 5 years, allowing you to review recorded events without a subscription fee.



Image: App interface displaying recorded events stored in the cloud.

#### **4.5. Anti-Theft Alarm**

The doorbell features a built-in burglar alarm. If someone attempts to remove the doorbell, it will trigger an alarm and send a notification to your phone.



## What's in The Box

Image: Illustration of the anti-theft siren and phone notification when the doorbell is being removed.

## 5. MAINTENANCE

### 5.1. Battery Charging

The MADV Smart Video Doorbell 2M is powered by a built-in 3700 mAh Lithium Ion battery. When the battery level is low, connect the doorbell to a power source using one of the provided USB cables to recharge it. A full charge can last up to 3 months depending on usage.



Images: Illustrates the built-in rechargeable battery and its long life.

## 5.2. Cleaning

To maintain optimal performance, periodically clean the lens and infrared sensor with a soft, dry cloth. Avoid using abrasive cleaners or solvents.

## 6. TROUBLESHOOTING

Problem	Possible Cause	Solution
Doorbell does not pair with Wi-Fi.	Weak Wi-Fi signal, incorrect password, or device too far from router.	Ensure the doorbell is within range of your Wi-Fi router. Verify the Wi-Fi password. Try resetting the doorbell and attempting pairing again.
Chime does not connect to the doorbell.	Chime not in pairing mode or doorbell not sending pairing signal.	Ensure the chime is powered on and in pairing mode (short press pairing button). Press the doorbell button to send a pairing signal. Repeat the pairing process.
Poor video quality or blurry images.	Dirty lens, poor lighting, or network issues.	Clean the camera lens. Ensure adequate lighting. Check your Wi-Fi connection strength.
Motion detection alerts are too frequent or not triggering.	Detection sensitivity settings, environmental factors.	Adjust the motion detection sensitivity and customize detection zones in the Mi Home app to suit your environment.

## 7. SPECIFICATIONS

Feature	Detail
Model Name	Video Doorbell 2M

Feature	Detail
Item Model Number	ML0049GL
Brand	MADV
Indoor/Outdoor Usage	Outdoor
Power Source	Battery Powered
Battery Type	1 Lithium Ion battery (included)
Battery Power	3700 Milliamp Hours
Connectivity Technology	Wireless (Wi-Fi)
Video Capture Resolution	1296p (2K)
Video Capture Format	MP4
Special Feature	Motion Sensor, Night Vision (Infrared), Two-Way Audio, Voice Changing
Controller Type	Mi Home App
Mounting Type	Wall Mount
Item Dimensions (L x W x H)	4.7 x 2.22 x 1.2 inches
Item Weight	9 ounces
International Protection Rating	IP54
Color	White

## 8. WARRANTY AND SUPPORT

### 8.1. Return Policy

This product is eligible for a refund or replacement within 30 days of purchase, as per the standard return policy.

### 8.2. Extended Protection Plans

Optional extended protection plans are available for purchase:

- **2-Year Protection Plan:** Available for \$7.99 (one-time payment).
- **3-Year Protection Plan:** Available for \$9.99 (one-time payment).
- **Complete Protect:** A monthly plan for \$16.99 covering all eligible past and future purchases.

### 8.3. Manufacturer Support

For technical assistance or further inquiries, please contact MADV Technology. Refer to the contact information provided in the product packaging or on the official MADV website. Note that some customer reviews indicate that direct phone support may not be available, with email being the primary contact method for support.

© 2024 MADV. All rights reserved.