

Manuals+

[Q & A](#) | [Deep Search](#) | [Upload](#)

manuals.plus /

- › [LINSY](#) /
- › [LINSY Queen Bed Frame User Manual - Model LH051A1-B](#)

LINSY LH051A1-B

LINSY Queen Bed Frame User Manual

Model: LH051A1-B | Brand: LINSY

1. INTRODUCTION

This manual provides detailed instructions for the assembly, operation, maintenance, and troubleshooting of your LINSY Queen Bed Frame. Please read this manual thoroughly before assembly and use to ensure proper function and safety.



A complete view of the LINSY Queen Bed Frame, showcasing its ergonomic headboard with integrated RGB lighting and charging station, designed for a modern bedroom.

2. SAFETY INFORMATION

WARNING:

- To ensure safety, secure your mattress firmly to the bed frame to prevent shifting.
- Be cautious around the edges of the bed frame to avoid injury during assembly and use.
- Do not exceed the maximum weight capacity of 1500 pounds.
- Keep all small parts and packaging materials away from children.

3. PACKAGE CONTENTS

Verify that all components are present before beginning assembly. Refer to the included parts list in your packaging for specific item identification. Typical components include:

- Headboard sections (with integrated RGB lights and charging station)
- Side rails

- Footboard
- Support legs
- Metal slats
- Assembly hardware (screws, bolts, Allen wrench)
- Instruction manual

4. SETUP AND ASSEMBLY

The LINSY Queen Bed Frame features a patented quick-lock design for fast assembly, typically completed within 45 minutes. It is recommended to have two people for assembly.

4.1 Preparation

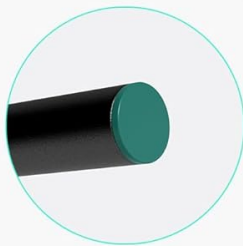
- Clear an open space for assembly.
- Unpack all components and lay them out on a soft surface to prevent scratches.
- Identify each part using the provided labels and numbers.

4.2 Assembly Steps

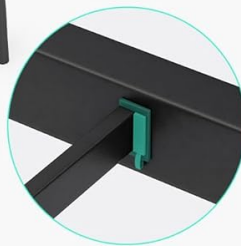
1. Attach the headboard sections together, ensuring the RGB light strip and charging station are correctly aligned.
2. Connect the side rails to the headboard using the provided hardware and quick-lock mechanism.
3. Attach the footboard to the side rails.
4. Install the central support beam and support legs.
5. Place the metal slats onto the frame, ensuring they lock securely into place. The seamless locking system with EVA mute stickers helps reduce noise.
6. Plug in the power cord for the RGB lights and charging station to a wall outlet.

| Say Goodbye to Squeaks

Fast Assembly
45mins



Floor Protector



Patented Locking System



Noise-free Strips

Diagram showing the quick-lock design for 45-minute assembly, floor protectors, patented locking system, and noise-free strips for a silent bed frame.

5. OPERATING INSTRUCTIONS

5.1 RGB LED Lights

The integrated RGB LED lights offer customizable ambiance for your bedroom.

- **Colors:** Choose from 20 vibrant static colors.
- **Brightness:** Adjust between 8 brightness levels.
- **Modes:** Select from 20 dynamic changing modes.
- **Control:** Use the included controller to manage settings. The lights also feature a memory function to recall your last setting.

RGB LED Lights

DIY by Yourself




controller


8 brightness
modes


memory
function


20 changing
modes


20 statics
modes



DIY colors by yourself



Visual representation of the RGB LED lights integrated into the headboard, demonstrating the controller, 8 brightness modes, memory function, 20 changing modes, and 20 static colors.

5.2 Charging Station

The headboard includes a convenient charging station for your electronic devices.

- **USB Ports:** Two 5V/2A DC USB ports are available for charging smartphones, tablets, and other USB-powered devices.
- **AC Outlet:** One 125V/12A DC AC outlet is provided for standard electrical devices.
- **Power Cord:** The charging station is powered by a 6.6-foot power cord.

| Built-in Charging Station



A detailed view of the headboard's built-in charging station, featuring two 5V/2A DC USB ports and one 125V/12A AC outlet, with a 6.6-foot power cord.

5.3 Ergonomic Headboard Storage

The headboard features a 95-degree tilted design for ergonomic comfort and includes 3-tier storage shelves.

- Use the shelves to store books, decorations, a clock, or other personal items.
- The tilted design provides optimal support for reading or relaxing in bed.

Ergonomic Headboard with Multi-space Storage

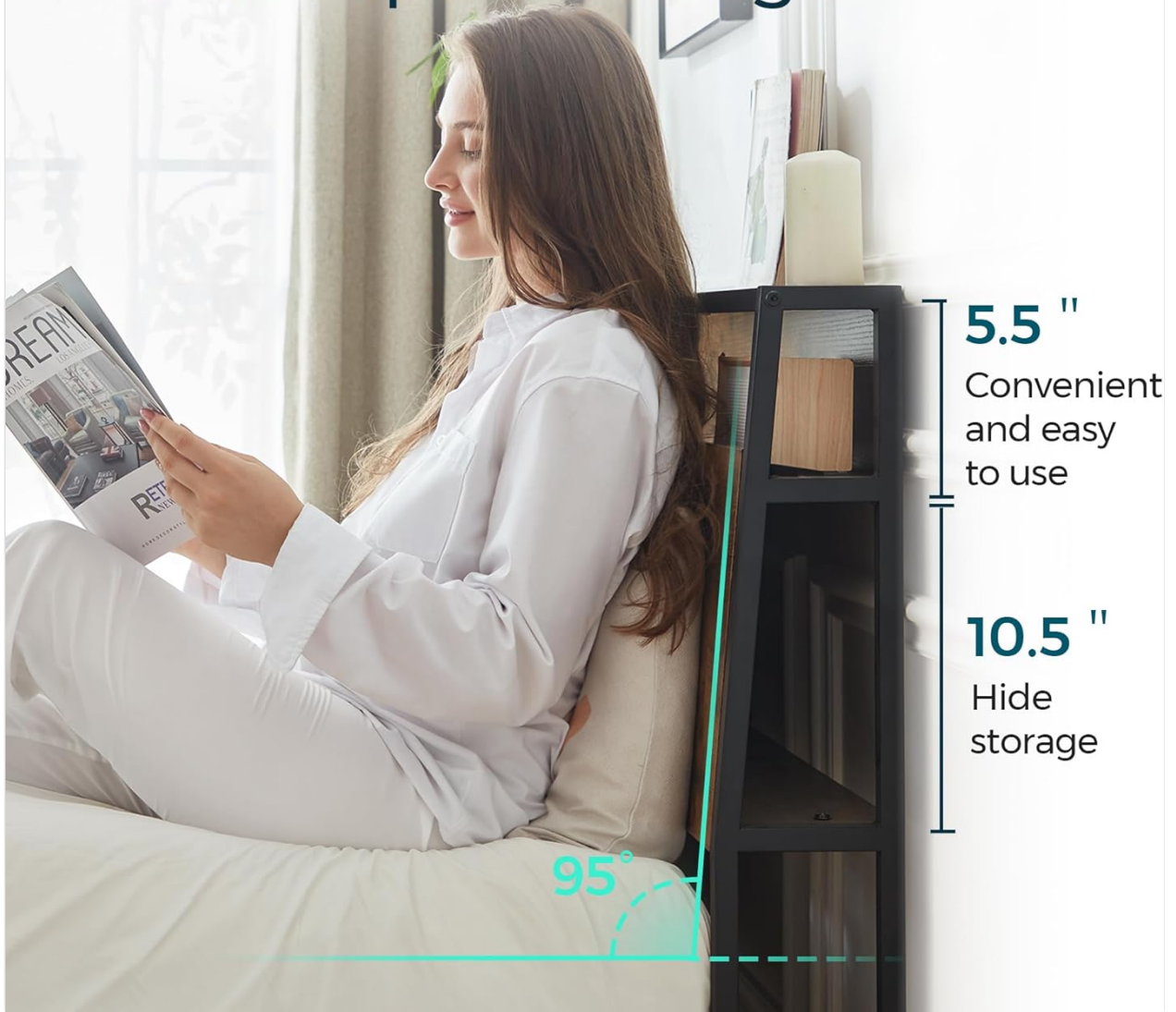


Image highlighting the 95-degree tilted ergonomic headboard, providing comfortable back support, along with integrated storage shelves.

5.4 Under-Bed Storage

The bed frame provides 14 inches of clearance underneath, offering ample space for storage.

- Utilize this space for storage boxes, suitcases, shoes, or to accommodate a robotic vacuum.

Under Bed Spacious Storage



Illustration of the 14-inch under-bed clearance, providing generous space for storing shoes, storage boxes, suitcases, or a robotic vacuum.

6. MAINTENANCE

Regular maintenance helps prolong the life and appearance of your bed frame.

- **Cleaning:** Wipe the metal and wood surfaces with a soft, damp cloth. Avoid harsh chemicals or abrasive cleaners.
- **Hardware Check:** Periodically check all bolts and screws to ensure they are tight. Re-tighten if necessary to maintain stability and prevent squeaks.
- **Electrical Components:** Ensure the power cord for the RGB lights and charging station is not pinched or damaged. Do not attempt to repair electrical components yourself.

7. TROUBLESHOOTING

Address common issues with your bed frame using the following guide.

7.1 Squeaking Noises

The LINSY bed frame is designed with a seamless locking system and EVA mute stickers to minimize noise. If squeaking occurs:

- Check all connections and ensure bolts are securely tightened.
- Verify that the mattress is properly seated within the embedded design of the frame and not sliding.
- Ensure all slats are correctly positioned and locked.

7.2 RGB Lights Not Functioning

- Ensure the power cord is securely plugged into a working wall outlet.
- Check the connection between the light strip and the power source.
- Verify that the controller is functioning and batteries (if applicable) are correctly installed.

7.3 Charging Station Not Working

- Confirm the main power cord for the bed frame is plugged into a live electrical outlet.
- Test the outlet with another device to ensure it is supplying power.
- Ensure devices are properly connected to the USB ports or AC outlet.

8. SPECIFICATIONS

Brand	LINSY
Model Number	LH051A1-B
Size	Queen
Product Dimensions (LWH)	86.5" x 60.5" x 40.2"
Compatible Mattress Size	Queen (Suitable for 80" x 60" Mattress)
Weight Capacity	1500 pounds
Item Weight	74 pounds
Color	Greige
Material	Wood + Metal
Special Features	Ergonomic Headboard, RGB Lights, Built-in Charging Station, Under-bed Storage
Assembly Required	Yes (Approx. 45 minutes)
Ground to Item Distance	14 Inches

Product Size



Full Size	Queen Size
81.5*54.5*40.2 inch	86.5*60.5*40.2 inch

Detailed diagram illustrating the dimensions of the Queen size bed frame (86.5"L x 60.5"W x 40.2"H) and its maximum weight capacity of 1500 lbs.

9. WARRANTY AND SUPPORT

For any issues or support inquiries regarding your LINSY Queen Bed Frame, please contact customer service.

Customer Support Email: support@linsyliving.com

Please provide your model number (LH051A1-B) and purchase details when contacting support for faster assistance.