

[Manuals.plus](#) /

> [G&G](#) /

> G&G P2022W Compact Monochrome Laser Printer User Manual

## G&G P2022W

# G&G P2022W Compact Monochrome Laser Printer User Manual

Model: P2022W

## 1. SETUP

---

### 1.1 Unboxing

Carefully unpack all items from the box. Ensure the following components are present:

- G&G P2022W Monochrome Laser Printer
- Starter Cartridge (700 pages)
- USB Interface Cable
- Power Cord
- CD and User Manuals



**FAST PRINT SPEED**  
22 ppm (A4) / 23 ppm (LETTER)



**ONE-STEP  
DRIVER INSTALLATION**



**WIRELESS & USB  
CONNECTIVITY**



**PRINT FROM  
MOBILE DEVICES**

## Additional Features:

- 150-sheet paper capacity
- Including 700 pages starter cartridge
- Automatic sleep mode
- Metal frame
- Compact size



Image: Contents of the G&G P2022W printer box, including the printer, starter toner, USB cable, power cord, and manuals.

### 1.2 Physical Placement

Place the printer on a stable, flat surface with adequate ventilation. Ensure there is enough space around the printer for paper loading and output. The compact dimensions (approximately 33.7 cm width x 22.0 cm depth x 17.8 cm height) allow for placement in various workspaces.



**23** ppm  
Print speed



**7.8** second  
First print out time



Image: G&G P2022W printer with its dimensions (33.7cm width, 22.0cm depth, 17.8cm height) clearly marked.

### 1.3 Toner Cartridge Installation

The printer comes with a starter toner cartridge. To install:

1. Open the front cover of the printer.
2. Remove the new toner cartridge from its packaging.
3. Gently shake the cartridge horizontally a few times to distribute the toner evenly.
4. Insert the toner cartridge into the printer until it clicks into place.
5. Close the front cover.

# 1,600 pages



**GT202**



As per IOS/IEC 19752 specification  
(Individual users will experience different results  
based on their environment and page coverage).  
Specific performance is subject to the material object.

Starter cartridge: 700 pages;  
Standard cartridge: 1,600 pages

## P2022W

## G&G Genuine

Image: A G&G P2022W starter toner cartridge, ready for installation.

### 1.4 Connectivity and Driver Installation

The G&G P2022W supports both USB 2.0 and Wi-Fi connectivity.

#### 1.4.1 Wireless Connection via PC

For wireless connection using a PC:

1. Go to the [ggimage website](#), navigate to 'Printer' -> 'G&G Laser Printers' -> 'G&G P2022W laser printer' and click 'DOWNLOAD DRIVER'. Input the printer model to download its driver.
2. When installing the driver, choose 'Connect with Wi-Fi'.
3. Turn on the printer by pressing the power button. First, ensure the computer is connected to the router, and then use a USB cable to connect the computer with the printer.
4. Install the driver. Remove the USB cable after finishing the installation.

## How to connect with printer through hot spot?

1. Scan the QR code on front cover of the printer or go to [ggimage](#) website to download G&G APP.
2. Open your smartphone Settings - WLAN - find the printer Wi-Fi hotspot name "DIRECT-\*\*-GG-P2022W"—enter the initial password "12345678"—the printer hotspot connection is successful



Image: Visual guide illustrating the steps to connect the G&G P2022W printer to Wi-Fi using a PC.

### 1.4.2 Wireless Connection via Mobile Device (Wi-Fi Hotspot)

For mobile devices, you can connect through the printer's Wi-Fi hotspot:

1. Scan the QR code on the front cover of the printer or go to the [ggimage website](#) to download the G&G APP.
2. Open your smartphone Settings -> WLAN.
3. Find the printer Wi-Fi hotspot name 'DIRECT-\*\*-GG-P2022W'.
4. Enter the initial password '12345678'. The printer hotspot connection is successful.



Image: Visual guide demonstrating how to connect the G&G P2022W printer to a mobile device using its Wi-Fi hotspot.

### 1.4.3 Connecting to Router via Mobile Device

To connect the printer to your router using a mobile device:

1. Keep the 'Cancel / Continue' button pressed to print the IP info page.
2. Check the IP address on the info page.
3. Turn on the Wi-Fi on your mobile device and connect with the printer. Enter the password '12345678'.
4. Open a browser on your mobile device and enter the IP address of the printer.
5. Log in using the user name: **admin** and password: **000000**.
6. Click 'Settings', then select 'wireless network' on the left menu.
7. Turn on the network, click 'Apply'. The router is connected successfully.

## How to connect with Wi-Fi via PC?

1. Go to gimage website, and then click "Printer"—"G&G Laser Printers"—"G&G P2022W laser printer"—"DOWNLOAD DRIVER". Input the printer model to download its driver.
2. When installing the driver, choose "Connect with Wi-Fi"
3. Turn on the printer by pressing the power button. First, make sure the computer is connected with the router, and then use USB to connect the computer with the printer.
4. Install the driver, Remove USB after finishing driver installation.



Image: Visual guide detailing the process of connecting the G&G P2022W printer to a Wi-Fi router using a mobile device.

## 2. OPERATING INSTRUCTIONS

### 2.1 Loading Paper

Open the paper tray and load paper. The printer has a 150-sheet paper capacity. Ensure the paper guides are adjusted to fit the paper size to prevent jams.



Image: The G&G P2022W printer with paper loaded in both the input and output trays, demonstrating readiness for printing.

### 2.2 Basic Printing

Once connected and drivers are installed, you can print documents from your computer or mobile device.

The printer offers fast printing up to 23 pages per minute (ppm) for Letter size in black and white, with a resolution of up to 1200 x 1200 dpi.

## 2.3 Mobile Printing

Utilize the G&G print app (available for iOS and Android) for convenient printing directly from your smartphone or tablet. The app provides a user-friendly interface for managing print jobs and settings.

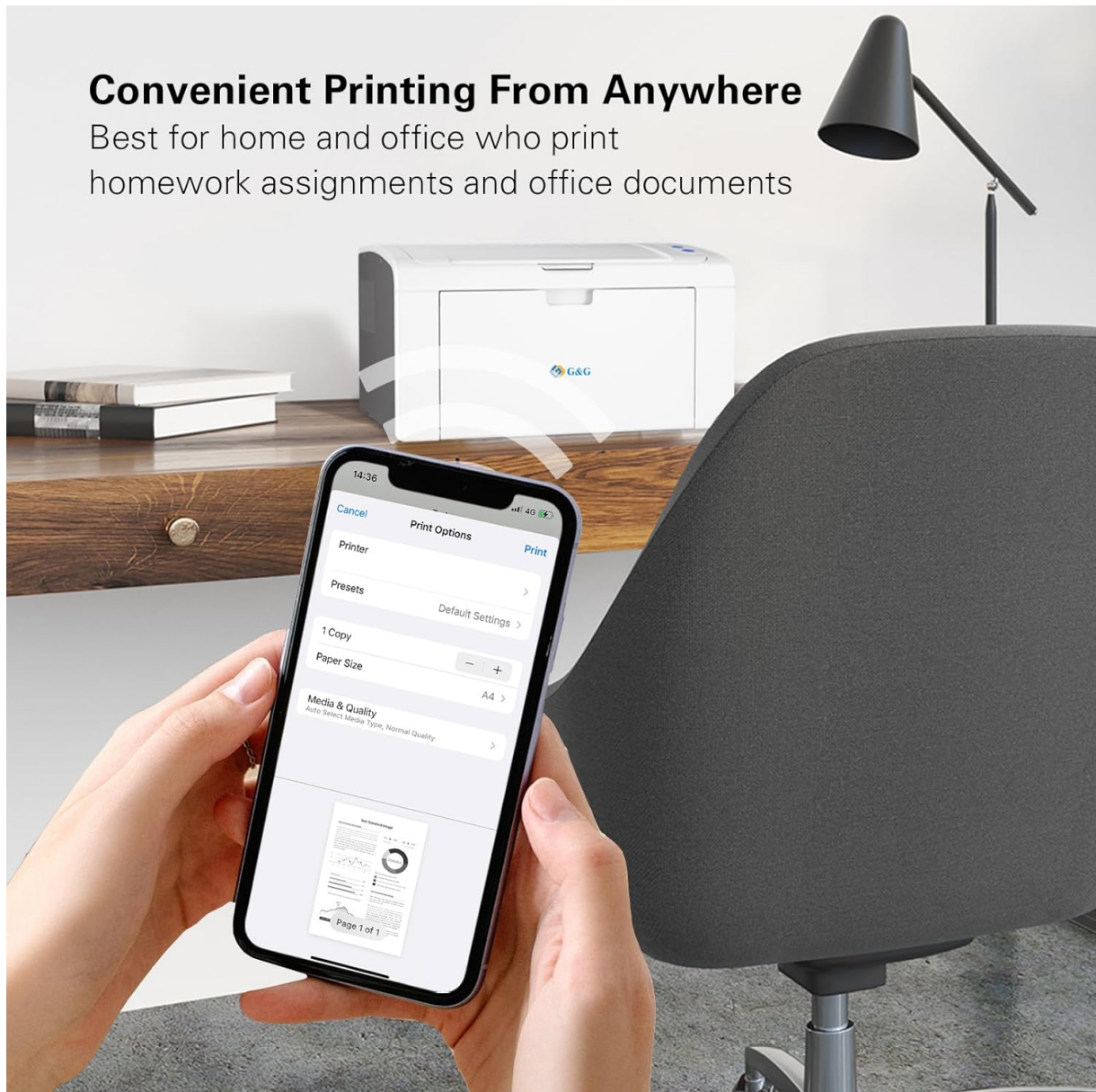


Image: A smartphone screen showing the G&G print application, illustrating the mobile printing functionality of the P2022W printer.

## 3. MAINTENANCE

### 3.1 Toner Replacement

When the toner cartridge is low or empty, replace it with a new G&G GT202 toner cartridge. The standard cartridge yields approximately 1,600 pages (at 5% coverage based on ISO 19752 standard).

1. Open the front cover of the printer.
2. Carefully remove the old toner cartridge.
3. Unpack the new GT202 toner cartridge.
4. Gently shake the new cartridge horizontally to distribute toner.

5. Insert the new cartridge until it locks into place.
6. Close the front cover.

# P2022W

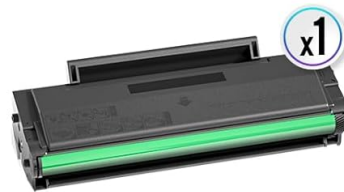
# In the Box



## G&G P2022W

Monochrome Laser Printer

Starter cartridge  
(700 pages)



USB  
Interface Cable



Power Cord



CD and  
User Manuals

Image: A G&G GT202 toner cartridge, designed for the P2022W monochrome laser printer.

## 3.2 Cleaning

Regular cleaning helps maintain print quality and extends the printer's lifespan. Use a soft, lint-free cloth to wipe the exterior of the printer. For internal cleaning, refer to the detailed instructions in the full user manual provided on the installation CD or G&G website.

## 4. TROUBLESHOOTING

If you encounter issues with your G&G P2022W printer, consider the following common troubleshooting steps:

- **Connectivity Issues:** Ensure the printer is powered on and connected to the correct Wi-Fi network or USB port. Restarting both the printer and the connected device can often resolve temporary connection problems.
- **Print Quality:** If prints are faded or streaky, the toner cartridge may be low or improperly installed. Try shaking the cartridge gently or replacing it. Ensure you are using genuine G&G toner.
- **Paper Jams:** Follow the instructions in the full user manual to safely remove any jammed paper. Always ensure paper is loaded correctly and paper guides are adjusted.

- **Driver Problems:** If printing fails, verify that the correct printer drivers are installed and up to date. Reinstalling drivers from the [G&G website](#) may resolve driver-related issues.

**Compatibility Note:** The G&G P2022W printer is compatible with Windows, MAC, Ubuntu, iOS, and Android operating systems. It is **NOT compatible** with ChromeBook or Linux (except Ubuntu).

## 5. SPECIFICATIONS

Key technical specifications for the G&G P2022W Monochrome Laser Printer:

Feature	Specification
Model	G&G P2022W
Printing Technology	Laser
Printer Output	Monochrome
Max Print Speed (Monochrome)	23 ppm (Letter)
Max Print Resolution (Monochrome)	1200 x 1200 dpi
First Print Out Time	7.8 seconds
Connectivity Technology	USB 2.0, Wi-Fi
Special Features	Network-Ready, Mobile Printing
Compatible Devices	Smartphones, PC (Windows, MAC, Ubuntu)
Max Input Sheet Capacity	150 sheets
Output Sheet Capacity	100 sheets
Included Components	Toner Cartridges (Starter)
Product Dimensions	22D x 33.7W x 17.8H Centimetres (13.27" x 8.66" x 7.01")
Item Weight	5.4 kg
Colour	Grey
Power Source	Corded Electric
Dual-sided printing	Yes

## 6. WARRANTY AND SUPPORT

### 6.1 Warranty Information

The G&G P2022W printer comes with a 1-year limited warranty from the date of sale to the consumer. Please retain your proof of purchase for warranty claims.

### 6.2 Customer Support

G&G online customer support service is available for technical assistance. For further support, driver downloads, or detailed manuals, please visit the official [G&G website](#).

