

Manuals+

[Q & A](#) | [Deep Search](#) | [Upload](#)

[manuals.plus](#) /

› [SuperATV](#) /

› [SuperATV Winch Ready Rear Bumper for Polaris Ranger XP 1000 Special Editions User Manual](#)

SuperATV RB-P-RAN1K-002-00

SuperATV Winch Ready Rear Bumper User Manual

Model: RB-P-RAN1K-002-00 | Brand: SuperATV

1. INTRODUCTION

This manual provides comprehensive instructions for the installation, operation, and maintenance of your SuperATV Winch Ready Rear Bumper. Designed for Polaris Ranger XP 1000 Special Editions, this bumper offers robust rear-end protection and winch integration capabilities. Please read this manual thoroughly before installation and use to ensure proper function and safety.



2. SAFETY INFORMATION

- Always wear appropriate personal protective equipment (PPE) during installation, including safety glasses and gloves.
- Ensure the vehicle is parked on a level surface, the engine is off, and the parking brake is engaged before beginning any work.
- Disconnect the vehicle's battery before performing any electrical work, especially if installing a winch.
- Do not overtighten fasteners. Refer to vehicle manufacturer specifications for torque values where applicable.
- If you are unsure about any step, consult a qualified mechanic or contact SuperATV customer support.

3. PARTS LIST

Verify all components are present before beginning installation:

- 1 x SuperATV Winch Ready Rear Bumper
- All necessary mounting hardware (bolts, nuts, washers)

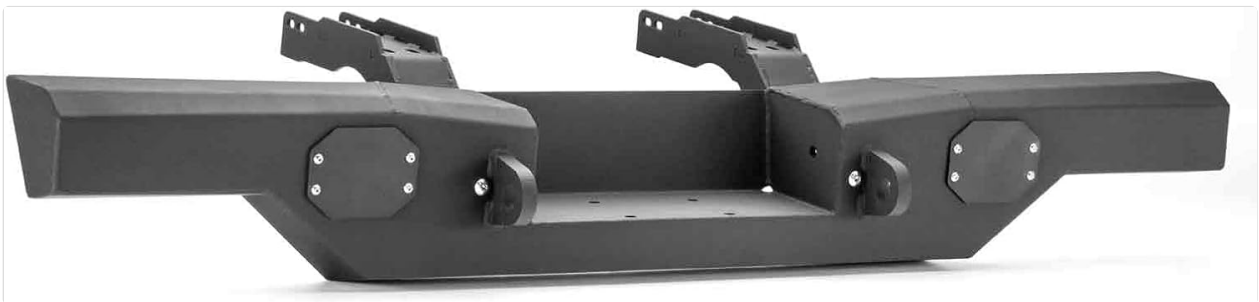


Figure 2: Components of the SuperATV Winch Ready Rear Bumper.

4. SETUP (INSTALLATION)

For detailed, step-by-step installation instructions, please scan the QR code on your invoice using any smart device. This provides instant access to the most current installation guide. The following is a general overview and visual aid.

4.1 General Installation Steps

1. **Prepare the Vehicle:** Park your Polaris Ranger XP 1000 on a flat, stable surface. Turn off the engine and engage the parking brake.
2. **Remove Existing Components:** Carefully remove any existing rear bumper or components that may interfere with the new bumper installation.
3. **Position the Bumper:** Align the SuperATV Winch Ready Rear Bumper with the mounting points on your vehicle's frame.
4. **Secure Mounting Brackets:** Attach the bumper to the frame using the provided hardware. Ensure all bolts are finger-tight initially to allow for adjustments.
5. **Adjust and Tighten:** Once the bumper is properly aligned and level, fully tighten all mounting hardware. Refer to the detailed instructions for specific torque requirements.
6. **Winch Installation (Optional):** If installing a winch, follow the winch manufacturer's instructions for mounting and wiring it to the bumper's integrated winch plate.



Figure 3: Close-up of the bumper's mounting bracket.

4.2 Installation Videos

Installation of Rear Bumper for Polaris Ranger XP 1000 (SAUTVS)

Video 1: This video demonstrates the installation process for a rear bumper on a Polaris Ranger XP 1000. It covers attaching the bumper to the vehicle's frame and securing it with bolts.

kemimoto Heavy Duty Rear Bumper (Installation Overview)

Video 2: An overview of installing a heavy-duty rear bumper, showing the components and the final mounted product.

KUAFU Rear Bumper Guard (Installation Overview)

Video 3: This video provides a general overview of assembling and installing a rear bumper guard, which may offer similar steps for a rear bumper.

5. OPERATING

The SuperATV Winch Ready Rear Bumper is designed to enhance the utility and protection of your Polaris Ranger XP 1000. Its primary functions include:

- **Rear-End Protection:** The heavy-duty steel construction shields the vulnerable rear plastics, suspension components, and tail lights from impacts with rocks, stumps, and other obstacles.
- **Winch Integration:** The bumper features a dedicated mounting location for a winch, allowing for easy recovery operations. Ensure your winch is properly installed and rated for your vehicle's needs.
- **D-Ring Mounts:** Two integrated D-ring mounts provide secure attachment points for recovery straps or chains. Always use appropriate recovery gear and follow safe recovery procedures.



Figure 4: Rear bumper with winch and D-ring mounts.

6. MAINTENANCE

Regular maintenance will ensure the longevity and performance of your SuperATV Winch Ready Rear Bumper:

- **Regular Cleaning:** Clean the bumper regularly to remove dirt, mud, and debris. Use mild soap and water, and avoid harsh chemicals that could damage the powder coating.
- **Inspect for Damage:** Periodically inspect the bumper for any signs of damage, such as bends, cracks, or rust. Address any issues promptly to prevent further deterioration.
- **Check Hardware:** Ensure all mounting bolts and nuts remain tight. Retighten as necessary, especially after off-road use.
- **Powder Coat Care:** The UV-resistant powder coating helps protect against corrosion. If the coating is scratched or chipped, touch it up to prevent rust.

7. TROUBLESHOOTING

Below are common issues and potential solutions:

- **Loose Bumper:** If the bumper feels loose, check all mounting bolts and ensure they are tightened to the correct specifications. Over time, vibrations from off-road use can cause hardware to loosen.
- **Interference with Dump Bed/Tailgate:** The bumper is designed not to interfere with the dump bed or tailgate function. If interference occurs, re-check the installation alignment and ensure all components are correctly positioned.
- **Rust Spots:** While powder-coated, deep scratches or chips can expose bare metal to moisture, leading to rust.

Clean the area, sand lightly, and apply a rust-inhibiting paint or touch-up coating.

8. SPECIFICATIONS

Feature	Detail
Brand	SuperATV
Model Number	RB-P-RAN1K-002-00
Material	Alloy Steel
Finish	Powdercoated (Black)
Item Weight	25 Pounds
Vehicle Service Type	Polaris Ranger XP 1000 (various editions)
Special Features	Winch Ready, 2 D-Ring Mounts, Full Rear-End Coverage

9. WARRANTY

For specific warranty information regarding your SuperATV Winch Ready Rear Bumper, please refer to the official SuperATV website or the warranty documentation included with your purchase. Warranty terms and conditions may vary.

10. SUPPORT

If you require further assistance, have questions about installation, or need to report an issue, please contact SuperATV customer support through their official website or the contact information provided on your purchase invoice.