

Hikvision NVR-104MH-C/4P

Hikvision HiLook NVR-104MH-C/4P 4-Channel 4K Network Video Recorder User Manual

1. INTRODUCTION

This manual provides detailed instructions for the installation, operation, and maintenance of the Hikvision HiLook NVR-104MH-C/4P 4-Channel 4K Network Video Recorder. Please read this manual thoroughly before using the product to ensure correct and safe operation. Keep this manual for future reference.

2. PRODUCT FEATURES

The HiLook NVR-104MH-C/4P is a high-performance Network Video Recorder designed for reliable surveillance systems. Key features include:

- Supports up to 4-channel IP camera inputs.
- Decoding capacity of up to 1-channel at 8 MP or 5-channels at 1080p.
- Incoming bandwidth of up to 40 Mbps.
- Advanced H.265+ compression technology, reducing storage space by up to 75% (compatible with H.265/H.264+/H.264 video formats).
- Simultaneous HDMI and VGA video outputs, with HDMI supporting up to 4K resolution.
- Equipped with 1 SATA interface for HDD connection, supporting up to 8 TB capacity per HDD.
- Features smart search and smart playback functions for efficient video review.
- Supports multiple Video Content Analytics (VCA) events, including motion detection, line crossing, and intrusion detection.
- Includes 4 independent PoE network interfaces for direct camera connection.
- One self-adaptive 10/100/1000 Mbps Ethernet interface for network connectivity.
- Compatible with HiLookVision for simplified network management.

3. SAFETY INSTRUCTIONS

Observe the following safety precautions to prevent injury or damage to the device:

- Ensure the power supply voltage is within the specified range.
- Do not expose the device to rain or moisture.
- Avoid placing the device in direct sunlight or near heat sources.
- Ensure proper ventilation to prevent overheating.
- Do not open the device casing; refer all servicing to qualified personnel.
- Use only accessories specified by the manufacturer.

4. SETUP

4.1 Package Contents

Verify that all items are present in the package:

- HiLook NVR-104MH-C/4P Unit
- Power Adapter
- USB Mouse
- SATA Data Cable
- SATA Power Cable
- HDD Mounting Screws
- Quick Start Guide

4.2 Hardware Installation

Follow these steps for physical installation:

- 1. Install Hard Disk Drive (HDD):**
 - a. Unscrew and remove the top cover of the NVR.
 - b. Connect the SATA data cable and power cable to the HDD.
 - c. Secure the HDD to the NVR chassis using the provided screws.
 - d. Replace the top cover and secure it with screws.
- 2. Connect IP Cameras:**

Connect your IP cameras to the PoE ports (1-4) on the rear panel of the NVR using Ethernet cables.
- 3. Connect to Monitor:**

Connect a monitor to the NVR's HDMI or VGA output port.
- 4. Connect to Network:**

Connect the NVR's LAN port to your network router or switch using an Ethernet cable.
- 5. Connect USB Mouse:**

Plug the USB mouse into a USB port on the NVR.
- 6. Power On:**

Connect the power adapter to the NVR and then plug it into a power outlet. The NVR will power on automatically.

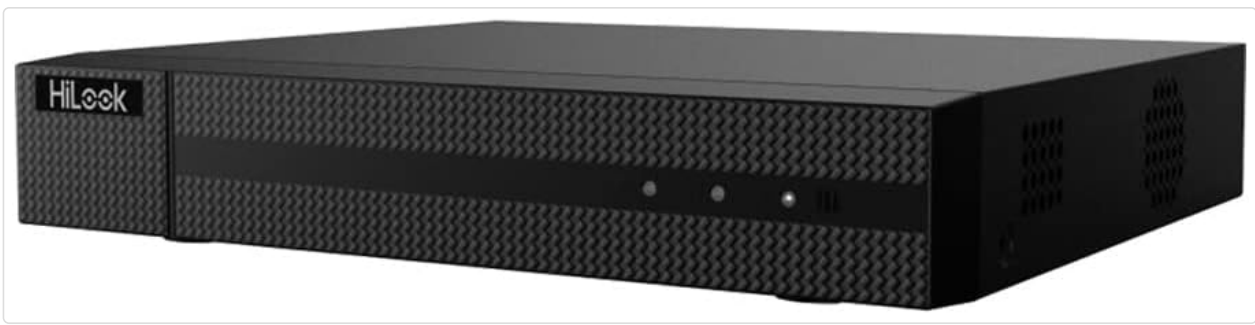


Figure 1: Front view of the HiLook NVR-104MH-C/4P. This image displays the front panel of the NVR unit, featuring the HiLook branding on the left and indicator lights on the right, indicating power and operational status.



Figure 2: Rear view of the HiLook NVR-104MH-C/4P. This image shows the back panel of the NVR, highlighting the various connectivity ports including PoE ports for cameras, LAN port, HDMI, VGA, Audio In/Out, USB ports, and the power input.

4.3 Initial Configuration

Upon first boot, the NVR will guide you through a setup wizard to configure basic settings such as:

- **Password Creation:** Set a strong password for the admin account.
- **Network Settings:** Configure IP address, subnet mask, and gateway.
- **Date and Time:** Set the correct date, time, and time zone.
- **HDD Initialization:** Format the newly installed HDD.
- **Camera Search and Add:** The NVR will automatically search for connected IP cameras. Add them to the system.

5. OPERATING INSTRUCTIONS

5.1 Live View

After initial setup, the NVR will display the live feed from connected cameras on the monitor. Use the mouse to navigate the interface, switch camera views, and access menus.

5.2 Recording Configuration

Access the 'Record' menu to configure recording schedules, modes (continuous, motion detection, alarm), and pre-record/post-record settings for each camera.

5.3 Playback

To review recorded footage:

1. Go to the 'Playback' menu.
2. Select the desired camera(s) and date/time range.

3. Use the timeline to navigate through recordings.
4. Utilize smart playback features to quickly find events.

5.4 Smart Functions (VCA)

The NVR supports various Video Content Analytics (VCA) events. Configure these in the 'Event' or 'Smart' menu:

- **Motion Detection:** Triggers recording or alerts when movement is detected in a specified area.
- **Line Crossing Detection:** Triggers when an object crosses a predefined virtual line.
- **Intrusion Detection:** Triggers when an object enters or exits a predefined virtual region.

6. MAINTENANCE

6.1 Firmware Updates

Regularly check the Hikvision official website for firmware updates. Updating firmware can improve performance, add new features, and enhance security. Follow the instructions provided with the firmware update package carefully.

6.2 HDD Management

Monitor the health of your HDD through the NVR's system settings. If the HDD shows signs of failure or reaches its capacity, consider replacing it or backing up important data. The NVR supports up to 8 TB per HDD.

6.3 Cleaning

Periodically clean the exterior of the NVR with a soft, dry cloth. Ensure ventilation openings are free from dust and obstructions to maintain optimal cooling.

7. TROUBLESHOOTING

This section addresses common issues you might encounter:

- **No Video Output:**
 - a. Check HDMI/VGA cable connections.
 - b. Ensure the monitor is powered on and set to the correct input.
 - c. Verify NVR power status.
- **No Camera Image:**
 - a. Check network cable connections between NVR and cameras.
 - b. Verify camera power (PoE status).
 - c. Ensure cameras are added and configured correctly in the NVR.
- **No Recording:**
 - a. Check if the HDD is installed and initialized.
 - b. Verify recording schedules and modes are correctly set.
 - c. Check HDD status for errors or full capacity.
- **Network Connection Issues:**
 - a. Verify Ethernet cable connection to the router/switch.
 - b. Check NVR network settings (IP address, gateway).
 - c. Ensure router/switch is functioning correctly.

8. SPECIFICATIONS

Feature	Specification
Product Dimensions	22.5 x 26.5 x 4.8 cm
Weight	1.6 kg
Manufacturer	HIKVISION
Item Model Number	303613407
Connectivity Technology	HDMI
Compatible Devices	Camera
Memory Storage Capacity	2 TB (Default/Example)
Hard Disk Size	2 TB (Default/Example)
Number of Channels	4
Media Format Digital Video	HDD
Audio Input	RCA
Total USB Ports	1
Video Input	IP

Note: Memory Storage Capacity and Hard Disk Size may vary based on specific product configuration or user-installed components.

9. WARRANTY AND SUPPORT

This product is manufactured by Hikvision. For warranty information, technical support, or service inquiries, please refer to the official Hikvision website or contact your local authorized dealer. Keep your purchase receipt as proof of purchase for warranty claims.