

[Manuals.plus](#) /

› [DHOME](#) /

› DHOME 160x105cm Beige Linen Headboard Instruction Manual

DHOME 160x105cm Linen Headboard

DHOME 160x105cm Beige Linen Headboard Instruction Manual

Model: 160x105cm Linen Headboard

Brand: DHOME

INTRODUCTION

This manual provides detailed instructions for the assembly, installation, and care of your DHOME 160x105cm Beige Linen Headboard. Please read all instructions carefully before proceeding to ensure safe and correct usage.



Image: The DHOME 160x105cm Beige Linen Headboard, featuring its natural linen upholstery and wooden legs.

IMPORTANT SAFETY INFORMATION

WARNING:

- Before wall mounting, carefully read and follow all instructions to ensure a secure installation.
- Be aware of potential clamping points during handling and installation.
- Note the weight of the headboard (approximately 6.9 kg).
- Avoid carrying or moving the headboard alone to prevent injury. Always seek assistance.

PACKAGE CONTENTS

Verify that all components are present before beginning assembly:

- 1 x DHOME 160x105cm Beige Linen Headboard
- 2 x Wooden Legs (55 cm height each)
- Mounting Hardware for Wall Installation (screws, anchors)
- Leg Attachment Hardware



Image: Detail of the leg attachment mechanism, showing the screw plate and wooden leg.

SETUP AND INSTALLATION

Option 1: Freestanding with Legs

1. **Attach Legs:** Locate the pre-drilled holes at the bottom corners of the headboard. Align each wooden leg with the corresponding attachment point.
2. **Secure Legs:** Use the provided leg attachment hardware to firmly screw the legs into place. Ensure they are tight and stable.
3. **Position Headboard:** Place the headboard against the wall behind your bed. Ensure it is centered and stable.



Image: The DHOME headboard positioned behind a bed in a modern bedroom setting.

Option 2: Wall Mounting (without legs)

This option provides a more secure and stable installation. The headboard includes pre-installed hardware for wall hanging.

1. **Determine Height:** Decide on the desired height for your headboard. Mark the wall accordingly.
2. **Install Wall Anchors:** Using the provided screws and anchors, install the wall mounting hardware at the marked positions. Ensure the anchors are suitable for your wall type (e.g., drywall, concrete).
3. **Hang Headboard:** Carefully lift the headboard and align the pre-installed hanging hardware on the back of the headboard with the wall anchors. Gently lower the headboard until it is securely seated.
4. **Verify Stability:** Lightly pull on the headboard to ensure it is firmly attached to the wall and does not wobble.



Image: The DHOME headboard displayed as a wall-mounted unit, without visible legs.

USAGE AND POSITIONING

The DHOME Linen Headboard is designed to be placed against a wall behind your bed. It serves as a decorative and functional element, providing back support and enhancing the aesthetic of your bedroom.

- Ensure the headboard is stable and does not shift during use.
- If using legs, periodically check that the leg attachments remain tight.
- If wall-mounted, periodically inspect the wall anchors for security.

CARE AND MAINTENANCE

To maintain the appearance and longevity of your DHOME Linen Headboard, follow these care instructions:

- **Cleaning:** The linen fabric is designed to be stain-resistant. For minor spills, gently blot with a clean, damp cloth. Avoid harsh chemicals or abrasive cleaners.
- **Dusting:** Regularly dust the headboard with a soft, dry cloth or a vacuum cleaner with a brush attachment.
- **Avoid Direct Sunlight:** Prolonged exposure to direct sunlight may cause fading. Position your headboard away from direct, intense sunlight if possible.
- **Inspection:** Periodically inspect the fabric for any signs of wear or damage.

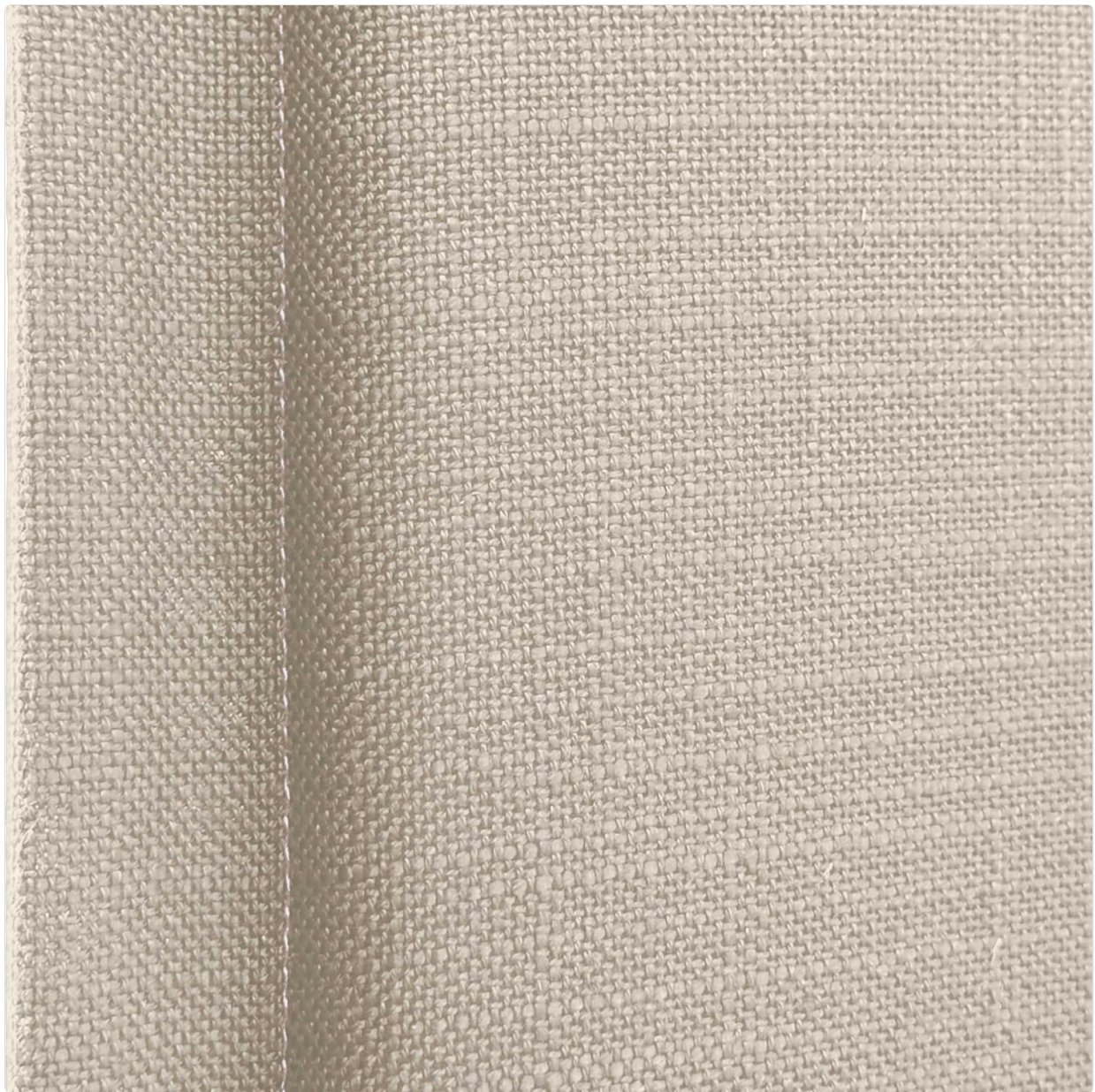


Image: A detailed view of the natural linen fabric texture, highlighting its weave and quality.

TROUBLESHOOTING

Headboard is unstable or wobbly:

- **Legs:** Ensure the wooden legs are securely attached and tightened. If the floor is uneven, consider using felt pads or shims under the legs for stability.
- **Wall Mounting:** Verify that the wall anchors are properly installed and the headboard is correctly seated on them. If necessary, re-install the anchors in a more secure location or use stronger anchors appropriate for your wall material.

Fabric appears stained or dirty:

- Refer to the "Care and Maintenance" section for cleaning instructions. For stubborn stains, consult a professional upholstery cleaner.

PRODUCT SPECIFICATIONS

Feature	Detail
Brand	DHOME
Model	160x105cm Linen Headboard
Color	Beige Linen
Dimensions (Width x Height)	160 cm x 105 cm (including 55 cm legs)
Thickness	4 cm
Weight	Approximately 6.9 kg
Upholstery Material	Natural Linen Fabric
Frame Material	High-quality Wood Structure
Mounting Type	Freestanding (with legs) or Wall-mounted
Origin	Made in Spain



Cabecero Acabado en Lino de Alta Gama

El ligamento de este tipo de tejidos, en este caso una composición natural, responde al estilo lino, donde la urdimbre y la trama del tejido son prácticamente del mismo grosor alineados de modo que forman un patrón simple de punto de cruz que ofrece ese característico aspecto aireado y ligero a la tela lino.

Catorce tonos, con una ligera saturación y alta luminosidad.

Medida (Largo)	Para camas de	Grosor	Alto
80 cm	80	4 cm	105 cm
90, 95 y 100 cm	90	4 cm	105 cm
105 y 110 cm	105	4 cm	105 cm
135 y 140 cm	135	4 cm	105 cm
140 y 145 cm	140	4 cm	105 cm
150 cm	150	4 cm	105 cm
160 cm	160	4 cm	105 cm





Acabado de alta gama
Cabecero acabado en lino premium de primera clase, disponible en varios colores y medidas para adaptarse a cada cama y dormitorio.



Gran grosor de 4 centímetros
Cabecero con grosor de 4 centímetros lo que brinda una gran resistencia y durabilidad.



Tapizado para colgar
Tapizado para colgar ya que incluye todos los herrajes y tornillería para poder hacerlo fácilmente.



Patas de madera enroscables
El cabecero incluye 2 patas, cilíndricas de 3 centímetros de diámetro y 55 centímetros de altura, que se unen al cabecero mediante rosca.

Image: An illustrative diagram detailing the dimensions and key features of the DHOME headboard, including thickness and leg height.



Image: A sewing machine with text highlighting the product's origin and quality manufacturing in Spain.

WARRANTY AND SUPPORT

Warranty Information

This DHOME headboard comes with a **Limited Warranty**. For specific terms and conditions, please refer to the warranty documentation included with your purchase or contact DHOME customer service.

Customer Support

For any questions, assistance with assembly, or to report missing/damaged parts, please contact DHOME customer support through your retailer or the official DHOME website.

Please retain your proof of purchase for warranty claims.