

Bioby POA9848739

Bioby Portable Electric Hands-Free Breast Pump

Model: POA9848739

Brand: Bioby

INTRODUCTION

Thank you for choosing the Bioby Portable Electric Hands-Free Breast Pump. This device is designed to provide a comfortable and efficient milk expression experience, allowing you to pump discreetly and conveniently at home, work, or on the go. Its quiet operation and hands-free design aim to integrate seamlessly into your daily routine.



Image: The Bioby breast pump offers a hands-free design, allowing users to multitask during pumping sessions.

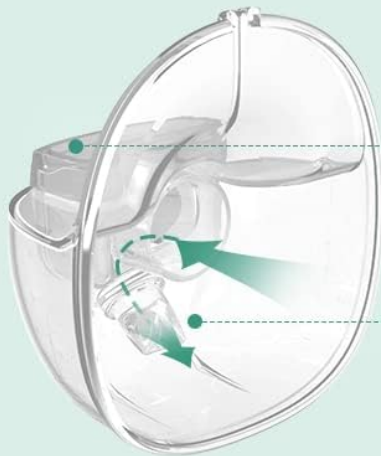
SAFETY INFORMATION

Please read all instructions carefully before using the Bioby Portable Electric Hands-Free Breast Pump. Keep this manual for future reference.

- **Material Safety:** The breast shields are made from food-grade silicone, ensuring safety for both your skin and expressed milk. The product is BPA-free.
- **Anti-Reflux Design:** The anti-reflux duckbill valve prevents milk backflow and leakage, helping to keep your clothing dry and maintain milk hygiene.
- **Cleaning:** Always ensure all parts that come into contact with breast milk are thoroughly cleaned and sterilized before each use. The motor unit is not washable.
- **Power Source:** Use only the provided charging cable and a compatible power adapter.
- **Disassembly:** Do not attempt to disassemble the motor unit.

Rückfluss- und auslaufsicher

Halte die Kleidung trocken und vermeide es, Milch zu verderben



Silikonmembran

Gas-Flüssigkeits-Trennung sicherstellen



Entenschnabelventil

Flüssigkeit fließt nur nach unten



VS



Image: The anti-reflux system, featuring a silicone membrane and duckbill valve, prevents milk leakage and contamination.

PRODUCT COMPONENTS

The Bioby Portable Electric Hands-Free Breast Pump includes the following components:

1. Silicone Breast Shield (24mm & 27mm)
2. Milk Collector Cup
3. Silicone Diaphragm
4. Bra Adjustment Buckle
5. Type-C Charging Cable
6. 21mm Flange Insert
7. Pump Motor Unit
8. Duckbill Valve



Image: A detailed view of all included parts, with labels for easy identification.

SETUP

1. Assembly

Before first use and after each cleaning, ensure all parts are dry. Assemble the breast pump by carefully connecting the silicone diaphragm, duckbill valve, and breast shield to the milk collector cup. Finally, attach the motor unit securely to the top of the assembled cup.

2. Choosing the Correct Breast Shield Size

Proper breast shield sizing is crucial for comfort and efficient milk expression. The Bioby pump includes 24mm and 27mm breast shields, along with a 21mm flange insert.

- Align your nipple with the center hole of the silicone breast shield.
- Gently press the shield against your breast. Your nipple should be centered and move freely within the tunnel without excessive friction.
- If using the 21mm insert, place it inside the 24mm breast shield. **Note:** Do not insert the 21mm flange into a 27mm shield, as this may cause milk leakage.

3-Größen-Optionen für die Bedürfnisse von mehr Müttern und große Kapazität



21mm (0.8 in)
Flanscheinsetz



24mm (0.9 in)
Brustschild



27mm (1.0 in)
Brustschild



6 oz (180 ml) Milchkapazität

Der 21-mm-Flansch passt nur an eine 24-mm-Silikonabschirmung.

Image: Visual guide for selecting the appropriate breast shield size and using the 21mm insert.

Moins de Pièces pour un Rinçage Plus Facile



1 Retirez le moteur
(la partie moteur n'est pas lavable).



2 Démontez le bouclier en silicone.



3 Démontez le diaphragme en silicone et la valve à bec de canard.

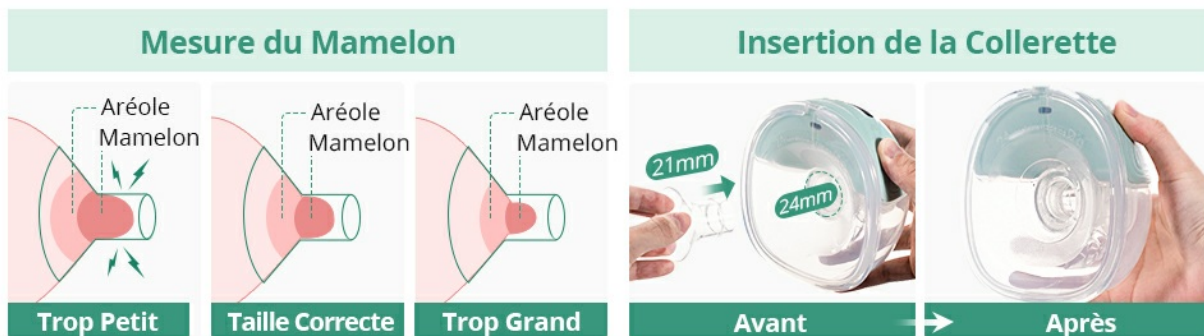


Image: Guide to correctly measure your nipple for optimal breast shield fit.

3. Wearing the Breast Pump Correctly

1. Press the silicone breast shield firmly against your breast, ensuring your nipple is centered.
2. Wear a nursing bra after securing the breast pump in place. Keep your body upright, and ensure the main unit is oriented upwards.
3. Use the bra adjustment buckle to create more space if needed for comfort and proper fit.

Choisir Correctement Votre Bouclier Mammaire



Alignez votre mamelon avec le trou central du bouclier en silicone et appuyez-le fermement contre votre corps. Positionnez votre mamelon comme sur la photo du milieu pour obtenir une correspondance parfaite.

Insérez la bride de 21 mm dans une bouclier mammaire de 24 mm.

Note :
N'insérez pas la collerette dans une visière de 27mm ou cela pourrait provoquer une fuite de lait.

Image: Step-by-step instructions for wearing the breast pump correctly for hands-free operation.

4. Charging the Device

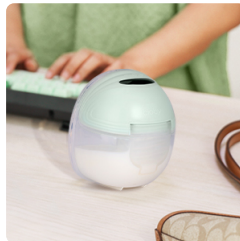
Connect the Type-C charging cable to the pump motor unit and a suitable power source. A full charge takes approximately 2.5 hours and provides up to 90 minutes of operation. The battery status will be displayed on the LCD screen.



Charging with power bank



Compact for travel



Discreet use at work

OPERATING INSTRUCTIONS

1. Powering On/Off and Mode Selection

The pump features an LCD touch screen for easy operation. Press and hold the power button to turn the device on or off. Short press the power button to cycle through the three modes: Massage, Expression, and Automatic.

2. Understanding the Modes and Suction Levels

The Bioby breast pump offers 3 modes and 12 adjustable suction levels to cater to individual needs and comfort.

- **Massage Mode:** Stimulates the milk let-down reflex and can help increase milk production.
- **Expression Mode:** Provides continuous pumping for efficient milk collection.
- **Automatic Mode:** Combines massage and expression phases to mimic a baby's natural suckling pattern.

Use the '+' and '-' buttons on the LCD panel to adjust the suction intensity within each mode (1-12 levels).

3 Modi und 12 Stufen

Imitieren Sie die Saugfrequenz des Babys und verwöhnen Sie Ihre Brust



Massagemodus

- Stimulieren Sie den Milchspendereflex
- Steigern Sie die Milchproduktion um 20 %+



Ausdrucksmodus

- Kontinuierliches Abpumpen der Brust
- Schmerzlos und effizient



Automatikmodus

- Automatisches Schaltgetriebe
- Mischen Sie Massage und Ausdruck

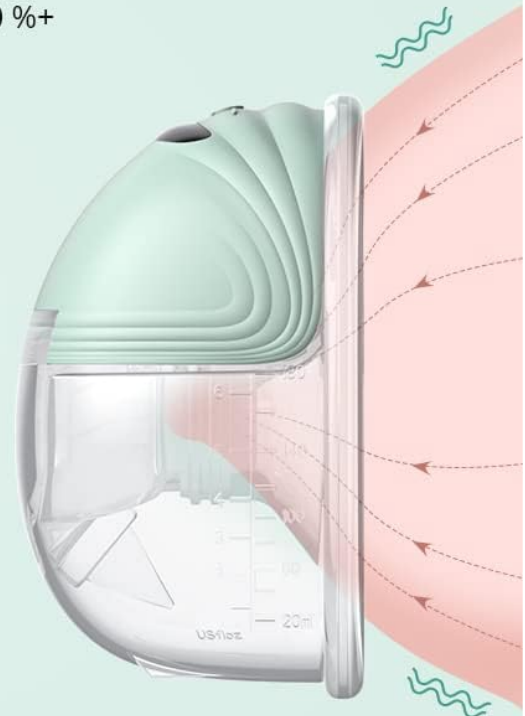



Image: Visual representation of the three distinct pumping modes and their 12 intensity levels.


LED-Panel für visuelle Bedienung

Smart Gear-Speicher und kein Zurücksetzen erforderlich




 Automatikmodus

 Aufleveln

 Massagemodus

 Leistungs- und Modusauswahl

 Ausdrucksmodus

 Einebnen

 Batteriestatus

Image: The LCD panel displays current mode, suction level, and battery status for easy monitoring.

3. Memory Function

The pump features a memory function that automatically saves your last used mode and suction level, eliminating the need to reset your preferences for each pumping session.

4. Automatic Shut-off

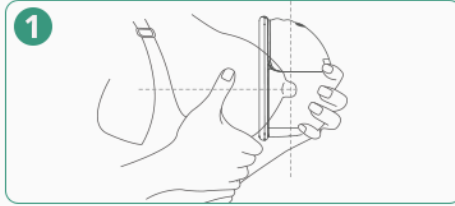
For safety and convenience, the pump will automatically shut off after 20 minutes of continuous operation.

5. Pouring Milk

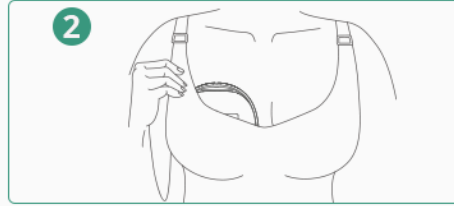
After completing your pumping session, follow these steps to safely transfer the expressed milk:

1. Remove the breast pump from your breast, keeping your body upright to prevent spills.
2. Hold the milk collector cup and carefully detach the motor unit.
3. Pour the expressed breast milk through the designated opening into a storage bottle or bag.

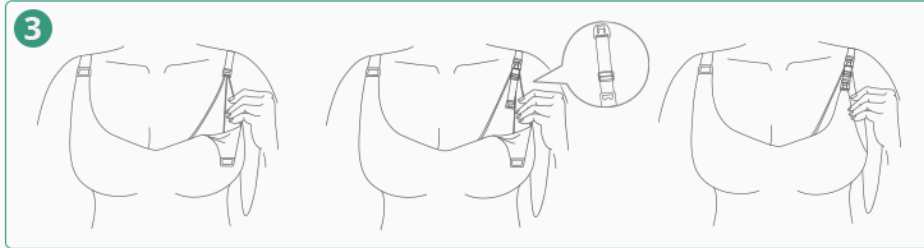
Portez correctement Votre Bouclier Mammaire



Appuyez fermement le bouclier en silicone contre votre sein et assurez-vous que le mamelon est centré.



Portez un soutien-gorge après avoir fixé le tire-lait en place, gardez votre corps droit et l'unité principale est orientée vers le haut.



Utilisez la boucle de réglage du soutien-gorge pour augmenter l'espace.

Image: Step-by-step guide for safely pouring expressed milk from the collector cup.

CLEANING AND MAINTENANCE

Proper cleaning and sterilization are essential for hygiene and the longevity of your breast pump. Always clean parts immediately after each use.

1. Disassembly for Cleaning

1. Remove the motor unit. **Note: The motor unit is not washable and should not be submerged in water.**
2. Disassemble the silicone breast shield from the milk collector.
3. Separate the silicone diaphragm and the duckbill valve from the milk collector.



Image: The pump disassembles into fewer parts for easier and more thorough cleaning.

2. Cleaning Methods

- **Washing:** Wash all disassembled parts (except the motor unit) in warm soapy water. Rinse thoroughly with clean water.
- **Sterilization:** Parts can be sterilized using UV sterilization or steam sterilization methods. Ensure parts are completely dry before reassembly.
- **Dishwasher:** The product is not dishwasher safe.

TROUBLESHOOTING

Problem	Possible Cause	Solution
No suction or weak suction	<ul style="list-style-type: none"> • Improper assembly of parts. • Damaged silicone diaphragm or duckbill valve. • Low battery. 	<ul style="list-style-type: none"> • Check that all parts are correctly assembled and sealed. • Inspect the silicone diaphragm and duckbill valve for tears or damage; replace if necessary. • Charge the breast pump fully.
Milk leakage	<ul style="list-style-type: none"> • Improper assembly. • Incorrect breast shield size. • Damaged duckbill valve. 	<ul style="list-style-type: none"> • Ensure all parts are securely connected. • Verify you are using the correct breast shield size for your nipple. • Check the duckbill valve for damage and replace if needed.

Problem	Possible Cause	Solution
Pump not turning on	<ul style="list-style-type: none">• Battery is depleted.• Device malfunction.	<ul style="list-style-type: none">• Charge the breast pump for at least 2.5 hours.• If the issue persists after charging, contact customer support.

SPECIFICATIONS

- **Model Name:** Electric
- **Model Number:** POA9848739
- **Operating Mode:** Electric
- **Material:** Silicone (BPA-free)
- **Special Features:** Portable, Rechargeable, Hands-free use
- **Power Source:** Electric Cable (Type-C)
- **Battery:** 2 Lithium-ion batteries (included)
- **Charging Time:** Approximately 2.5 hours
- **Operating Time:** Up to 90 minutes on a full charge
- **Automatic Shut-off:** 20 minutes
- **Dimensions (L x W x H):** 14 x 13 x 13 cm (5.5 x 5.1 x 5.1 inches)
- **Weight:** 230 grams (0.5 lbs)
- **Noise Level:** Approximately 45 dB
- **Milk Capacity:** 180 ml (6 oz)
- **Flange Sizes:** 21mm (insert), 24mm, 27mm

WARRANTY AND SUPPORT

Bioby products are manufactured to high-quality standards. If you encounter any issues or have questions regarding your Bioby Portable Electric Hands-Free Breast Pump, please contact our customer support. We are committed to resolving any problems promptly.

Please refer to your purchase documentation for specific warranty terms and contact information.