

ieGeek ZS-GX7S

ieGeek ZS-GX7S Indoor Security Camera User Manual

Model: ZS-GX7S | Brand: ieGeek

1. INTRODUCTION

This manual provides comprehensive instructions for the setup, operation, and maintenance of your ieGeek ZS-GX7S Indoor Security Camera. Designed for wire-free indoor security, this portable camera offers 1080P Full HD video, human detection, two-way audio, and clear night vision to enhance your home security.



Figure 1: ieGeek ZS-GX7S Indoor Security Camera with detachable stand.

2. PACKAGE CONTENTS

Verify that all items are present in your package:

- Wireless Indoor Camera
- Stand

- Nut
- Screw
- USB C Power Cable

3. PRODUCT FEATURES

- **90 Days Long Battery Life & 24/7 Recording:** Built-in 2400mAh rechargeable battery provides up to 3 months of life (30-40 triggers/day). Supports 24/7 continuous recording or motion event recording.
- **1080P FHD & 30 Ft Night Vision:** CMOS color sensor delivers crystal-clear 1920x1080 video. Two 850nm infrared lights provide clear night vision up to 30 feet with a 120° field of view and 4X digital zoom.
- **100% Wire-Free & Portable:** No cords or cables needed for placement anywhere indoors. Compact design allows for easy portability and versatile installation using included adhesive pads.
- **PIR Motion Detection & Instant Notification:** PIR sensor with human shape detection algorithm ensures alerts only for people, not pets. Customize alarm plans, areas, and detection sensitivity (1-10). Records motion events to local micro memory card (up to 128GB, not included) or ieGeek Cloud.
- **2-Way Audio & Built-In Siren:** Built-in microphone and speaker enable remote communication via the ieGeek Cam APP. Manual siren function to deter intruders.

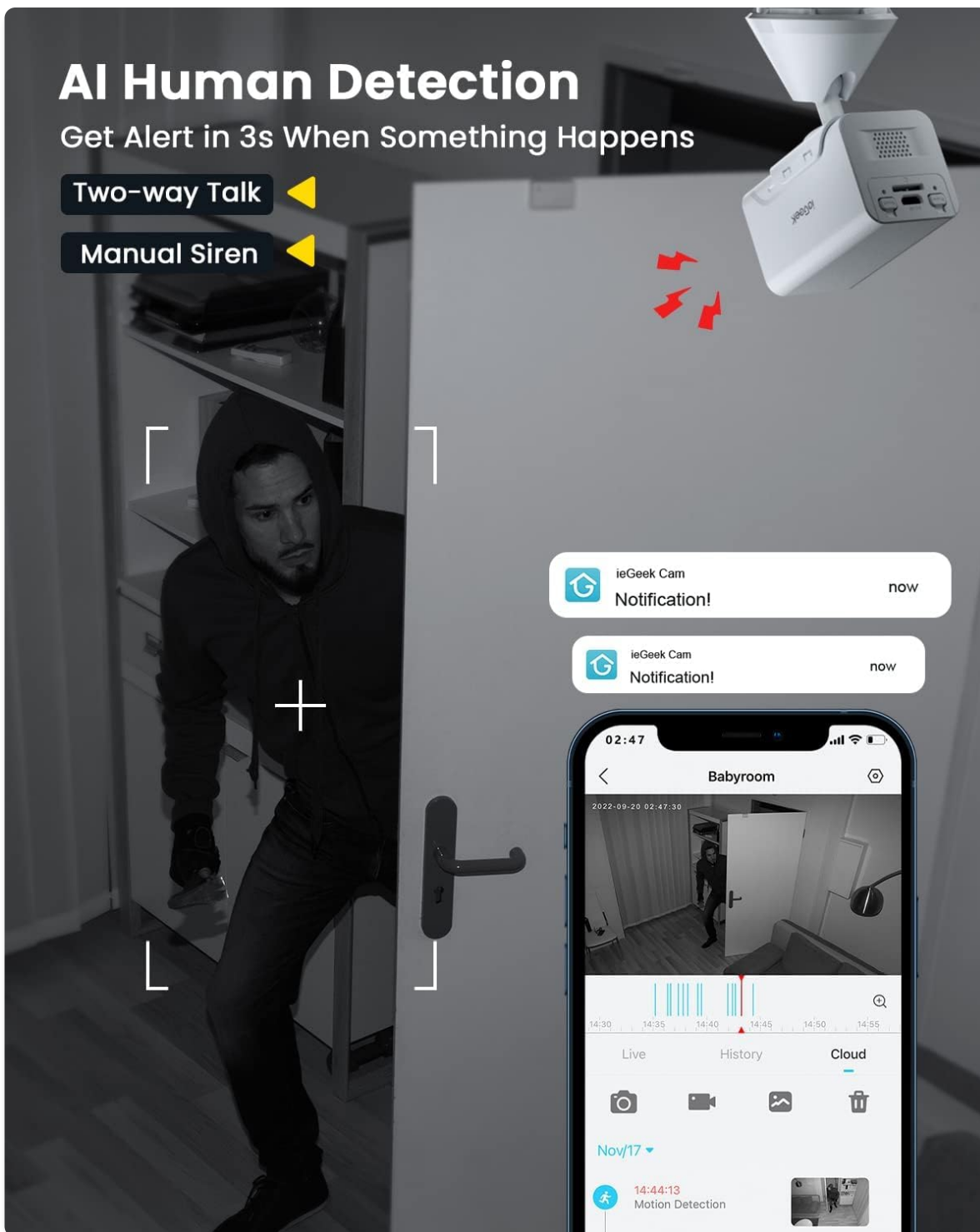


Figure 2: AI Human Detection and Two-Way Talk capabilities.

Your browser does not support the video tag.

Video 1: Overview of ieGeek Indoor Camera Wireless ZS-GX7S features.

Two Way-Audio

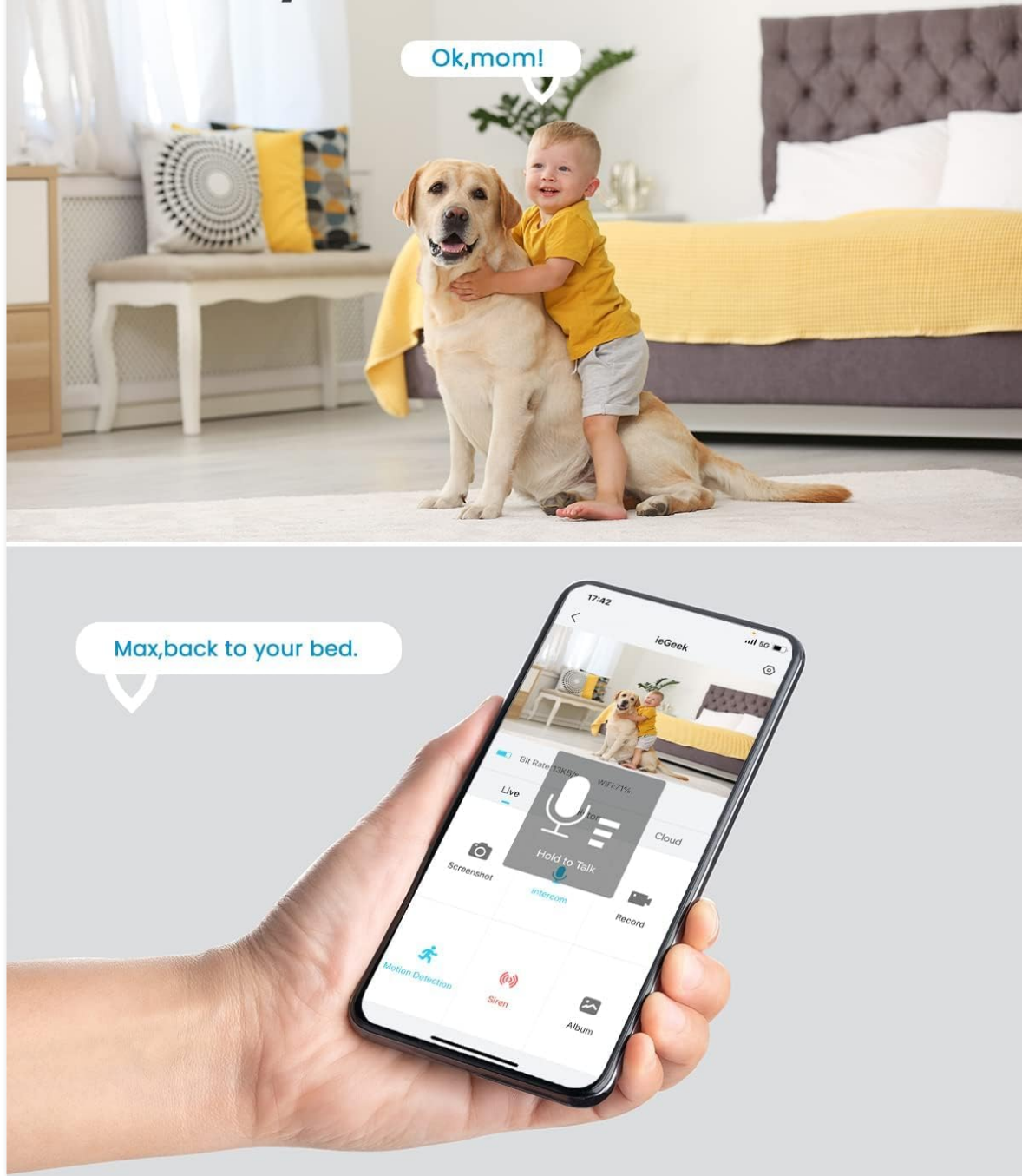


Figure 3: Demonstrating the two-way audio function.

Your browser does not support the video tag.

Video 2: Footage captured by the ZS-GX7S, including pet monitoring.

4. SETUP GUIDE

4.1 Initial Charging

Before first use, fully charge the camera using the provided USB-C power cable. The charging indicator light will change color (refer to the camera's LED indicator guide for specific colors) when fully charged.

4.2 App Download & Account Creation

Download the **ieGeek Cam** app from your smartphone's app store (iOS App Store or Android Google Play Store). Create an account and log in.

Your browser does not support the video tag.

Video 3: Instructions on how to connect the camera to the Internet via the app.

4.3 Camera Pairing

1. Open the ieGeek Cam app and tap 'Add Device'.
2. Select 'Battery Camera' from the device list.
3. Follow the on-screen prompts to power on the camera and reset it if necessary (hold the reset button for 4-5 seconds).
4. Ensure your phone is connected to a 2.4GHz Wi-Fi network (5GHz is not supported). Enter your Wi-Fi password in the app.
5. The app will generate a QR code. Hold your phone 5-8 inches (15-25cm) in front of the camera lens. The camera will scan the QR code and emit a tone when successful.
6. Once connected, the camera's indicator light will turn blue.

4.4 Installation

The camera is 100% wire-free and can be placed on any flat surface or mounted using the included adhesive pads. For optimal motion detection, avoid placing the camera in corners or near large appliances that might interfere with the signal.

Tiny Size No Cabling

Meet more personalized installation needs



Figure 4: Various installation options for the compact camera.

5. OPERATING INSTRUCTIONS

5.1 Live View

Open the ieGeek Cam app and select your camera from the device list to access the live video feed. You can view multiple cameras simultaneously if configured.



Figure 5: Live view interface on the smartphone app.

5.2 Motion Detection Settings

Customize motion detection sensitivity (1-10), set specific detection areas, and schedule alarm plans within the app settings. The camera integrates a PIR sensor with human shape detection to minimize false alarms.

5.3 Two-Way Audio & Siren

From the live view screen, tap the microphone icon to speak through the camera. Tap the siren icon to activate the built-in siren.

5.4 Recording & Playback

Motion-triggered events are recorded and saved to either a local Micro SD card (up to 128GB, not included) or the ieGeek Cloud service. Access recorded videos through the 'History' or 'Cloud' tabs in the app.

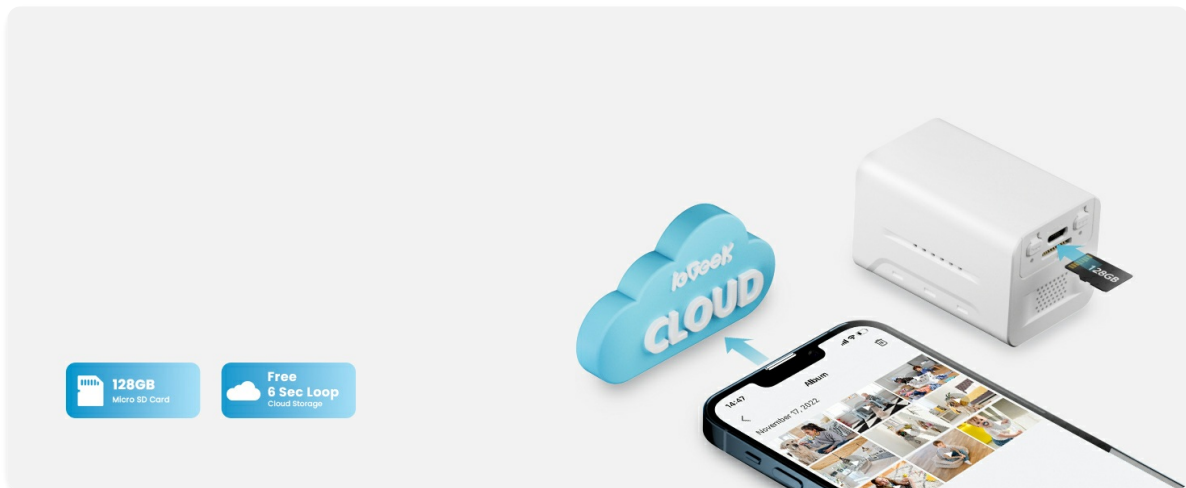


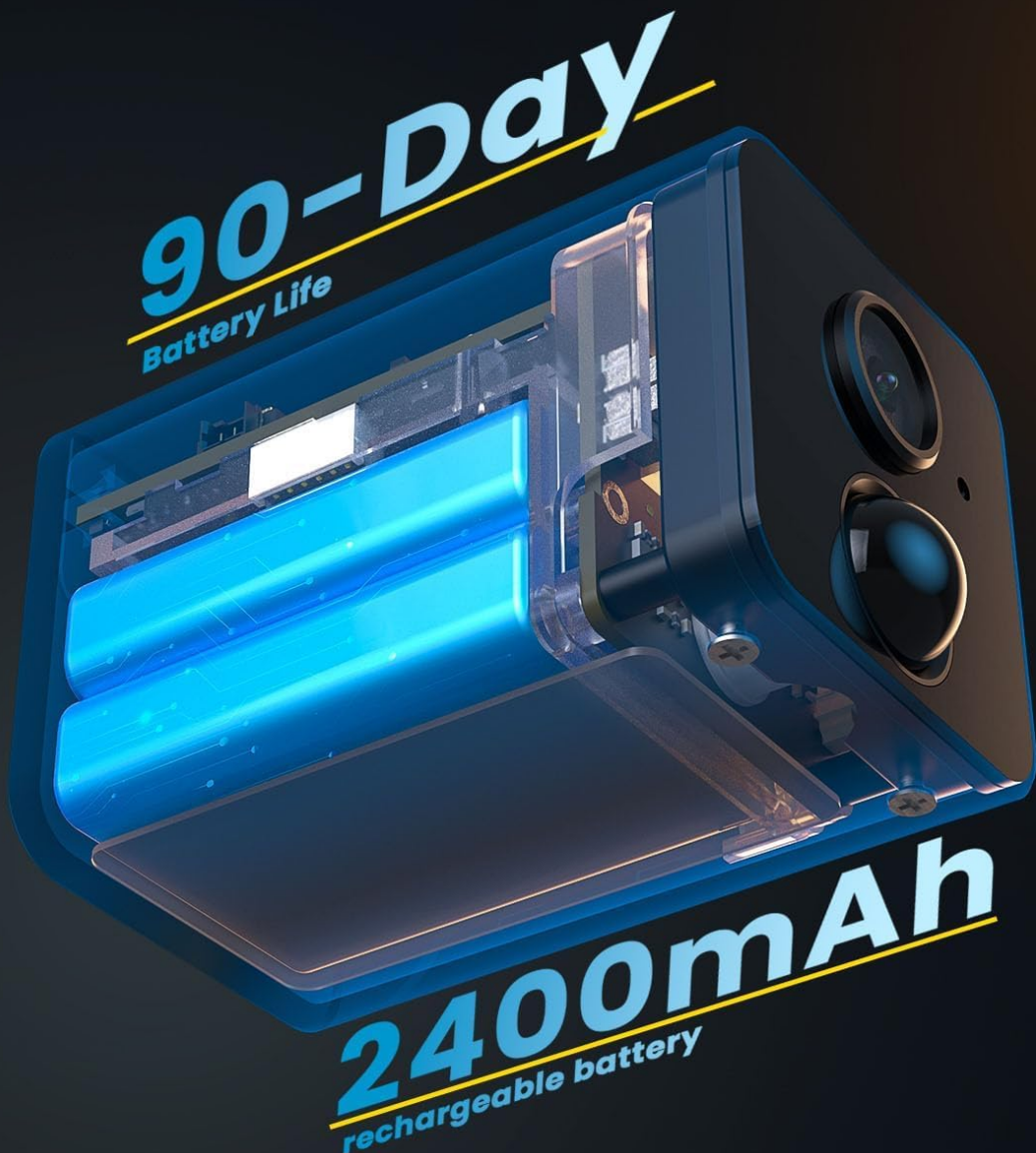
Figure 6: Cloud and SD card storage options for recorded footage.

6. MAINTENANCE

6.1 Battery Charging

Recharge the camera when the battery level is low. A full charge can last up to 90 days depending on usage (30-40 triggers per day).

Battery Powered Indoor Camera



***in event recording mode**

Figure 7: The camera's 90-day battery life in event recording mode.

6.2 Storage Management

Regularly check the remaining capacity of your Micro SD card. Back up important data before formatting the card, as formatting will erase all data.

7. TROUBLESHOOTING

7.1 Connectivity Issues

If the connection signal is unstable, try changing the camera's installation location to be closer to your 2.4GHz Wi-Fi router. Avoid corners, load-bearing walls, or large appliances that may cause interference.

7.2 Notifications Not Received

Ensure 'Receive Alert Notifications' is enabled in the app settings. Check your phone's notification settings for the ieGeek Cam app to ensure notifications are allowed.

8. SPECIFICATIONS

Feature	Detail
Model Name	ZS-GX7S Indoor Camera
Indoor/Outdoor Usage	Indoor
Connectivity Technology	Wireless (2.4GHz Wi-Fi)
Power Source	Battery Powered (2400 mAh)
Video Capture Resolution	1080p
Night Vision Range	30 Feet
Viewing Angle	120 Degrees
Motion Detection	PIR Human Detection
Two-Way Audio	Yes
Storage Options	Micro SD Card (up to 128GB), Cloud Storage
Dimensions (L x W x H)	2.36 x 1.5 x 3.46 inches
Item Weight	4.2 ounces

9. WARRANTY & SUPPORT

ieGeek provides a 2-YEAR warranty for this product. For any questions or support, please contact ieGeek customer service.

- **24/7 Professional After-sales Team**
- **30-Day Free Returns Policy**
- **2-Year Quality Guarantee**

After-Sales Email: service@iegeek.com

For more detailed information, please refer to the official User Manual PDF [Download User Manual \(PDF\)](#)

ieGeek is committed to creating a safer and worry-free lifestyle by delivering easy-to-use security products. Your data privacy is guaranteed with Advanced Encryption Standard Technology AES128.



[ieGeek ZS-GX7S Wire-free Indoor Camera Quick Start Guide](#)

This quick start guide provides essential instructions for setting up and operating the ieGeek ZS-GX7S Wire-free Indoor Camera, including app installation, camera introduction, battery charging, and installation tips.

lang:it **score:42** filesize: 1.76 M page_count: 94 document date: 2022-11-18