

[manuals.plus](#) /

› [IWEUKJLO](#) /

› [IWEUKJLO 4K Digital Camera User Manual](#)

IWEUKJLO DC101

IWEUKJLO 4K Digital Camera User Manual

Model: DC101

Brand: IWEUKJLO

INTRODUCTION

This manual provides comprehensive instructions for the IWEUKJLO 4K Digital Camera (Model DC101). Please read this guide carefully before use to ensure proper operation and to maximize your camera's potential. Keep this manual for future reference.



WHAT'S IN THE BOX

Verify that all items listed below are included in your package:

- 1 x 4K Digital Camera
- 1 x 32GB SD Card
- 1 x Charging Stand
- 1 x User Manual
- 1 x Charger
- 1 x Mini USB Cable
- 1 x HDMI Cable
- 1 x Lens
- 1 x Lens Cap
- 2 x Rechargeable Batteries
- 1 x Camera Bag
- 1 x Wrist Strap
- 1 x Cleaning Cloth

Compact and Portable

Weight: 239g

Size: 11.5×7×4 cm



Figure 2: Contents of the camera package.

SETUP

1. Charging the Battery

Insert the rechargeable battery into the charging stand. Connect the charger to the charging stand and plug it into a power outlet. The indicator light on the charging stand will show the charging status. Ensure batteries are fully charged before first use.

2. Inserting the Battery and SD Card

Open the battery compartment cover on the bottom of the camera. Insert the charged battery, ensuring correct polarity. Close the battery compartment. Insert the provided 32GB SD card into the SD card slot until it clicks into place. Ensure the card is inserted correctly to avoid damage.



Figure 3: Location of battery and SD card slots.

OPERATING INSTRUCTIONS

Powering On/Off

Press and hold the Power button located on the top of the camera to turn it on or off.

Basic Photography

In photo mode, lightly press the capture button to allow the camera to autofocus. The focus frame on the screen will change from yellow to green when focus is complete. Press the capture button firmly to take the photo.

Autofocus Function

You can get more explicit and more vivid photos by simply pressing the shutter button halfway to focus



Half press the shutter button to autofocus

Figure 4: Autofocus in action. Half-press the shutter button to focus.

Video Recording

Switch the camera to video mode. Press the record button to start recording 4K video at 30fps. Press again to stop. The camera supports video pause, allowing you to pause and resume recording to save editing time.

UHD 4K & 16X Digital Zoom & 48MP Megapixel



Figure 5: UHD 4K and 16X Digital Zoom capabilities.

180° Flip Screen

The 3-inch touchscreen can be rotated 180 degrees, making it ideal for vlogging and self-portraits, allowing you to see yourself while recording or framing shots.



Figure 6: The 180° flip screen for easy self-recording.

Webcam and HDMI Output

Connect the camera to your computer using the USB cable and switch to "webcam" mode to use it for live streaming, video calls, or online teaching. For larger displays, connect the camera to a TV or projector via the HDMI cable.



Figure 7: Webcam functionality and HDMI output.

Additional Shooting Modes

The camera supports various modes including time-lapse, looping video, slow-motion video, anti-shake shooting, and continuous shooting. Explore these options through the camera's menu settings.

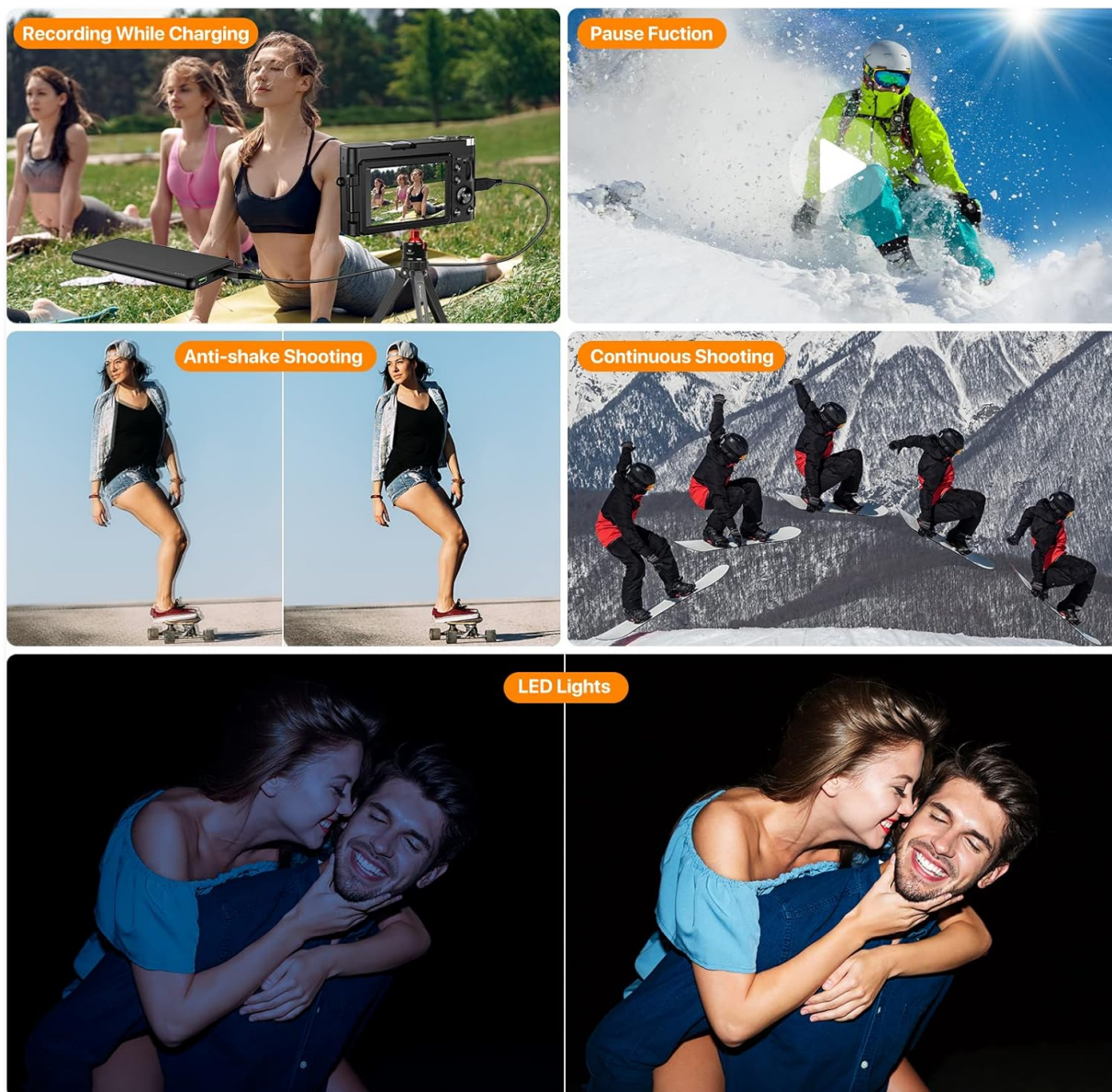


Figure 8: Diverse shooting functions for various scenarios.

MAINTENANCE

Cleaning the Camera

Use the provided cleaning cloth to gently wipe the camera body and lens. For stubborn smudges on the lens, use a specialized lens cleaning solution applied to the cloth, not directly to the lens. Avoid using abrasive materials or harsh chemicals.

Storage

When not in use, store the camera in its protective bag in a cool, dry place away from direct sunlight and extreme temperatures. Remove batteries if storing for extended periods to prevent leakage.

TROUBLESHOOTING

Problem	Possible Cause	Solution
---------	----------------	----------

Problem	Possible Cause	Solution
Camera does not power on.	Battery is dead or incorrectly inserted.	Charge the battery fully. Reinsert the battery correctly.
Images are blurry.	Autofocus failed or subject is too close/far.	Ensure autofocus engages (green frame). Maintain appropriate distance from subject. Clean the lens.
SD card error.	SD card is full, corrupted, or incorrectly inserted.	Delete unnecessary files or use a new SD card. Reinsert the SD card. Format the SD card (this will erase all data).
Video quality is poor.	Low light conditions or incorrect settings.	Ensure adequate lighting. Adjust video resolution settings.

If problems persist, please contact customer support.

SPECIFICATIONS

Model Name: DC101
Photo Sensor Resolution: 48 MP
Video Resolution: 4K (2160p), 4320p
Digital Zoom: 16x
Screen Size: 3 inches (180° Flip Screen)
Display Type: LCD, Capacitive Touch Screen
Autofocus: Yes (Contrast/Face/Smile Detection)
Image Stabilization: Digital
Supported File Format: JPEG (Image), AVI (Audio)
Connectivity: Micro USB, HDMI
Memory: Supports up to 32GB SD Card (32GB included)
Battery Type: Rechargeable Lithium Polymer (2 included)
Item Weight: 239 Grams
Dimensions (approx.): 11.5 x 7 x 4 cm (from image 71QwshWWUqL)
Special Features: Webcam function, Time-lapse, Looping video, Slow-motion video, Video Pause, Anti-shake, Continuous Shooting, Self Timer (2s, 5s, 10s)

WARRANTY & SUPPORT

Warranty Information

This product comes with a 2-year manufacturer's warranty. Please retain your proof of purchase for warranty claims.

Customer Support

If you encounter any issues or have questions regarding your IWEUKJLO 4K Digital Camera, please feel free to contact us. We aim to reply within 24 hours.
For additional resources, you may refer to the official User Manual (PDF) available online [User Manual](#)

(PDF)