

## DIHOOM YS-UK-Q3

# DIHOOM Wireless Rechargeable Battery Outdoor Security Camera

Model: YS-UK-Q3

## 1. INTRODUCTION

### Welcome

Thank you for choosing the DIHOOM Wireless Rechargeable Battery Outdoor Security Camera. This manual provides detailed instructions for setting up, operating, and maintaining your camera to ensure optimal performance and security for your home or property. Please read this manual thoroughly before use and keep it for future reference.

### Key Features

- **100% Wire-Free Installation:** Enjoy flexible placement with no messy power cords or network cables.
- **Long-Lasting Battery:** Integrated 5200mAh high-capacity battery provides 30-90 days of operation on a full charge.
- **1080p HD & 3MP Pixel Resolution:** Delivers clear images and videos for remote live viewing.
- **Color Night Vision:** Automatically activates warm light upon motion detection at night for full-color video.
- **Smart PIR Human & Motion Detection:** Intelligent sensors reduce false alarms by distinguishing human shapes and movement.
- **Siren & App Notifications:** Deter intruders with an activated spotlight and powerful siren, receiving instant alerts on your mobile device.
- **Two-Way Audio:** Communicate with visitors or deter unwanted guests from anywhere via the app.
- **Secure Storage:** Supports encrypted cloud storage and local micro SD card storage (up to 128GB, not included).
- **IP65 Waterproof:** Durable design suitable for both indoor and outdoor surveillance, resistant to various weather conditions.

## 2. PACKAGE CONTENTS

Please check the package to ensure all components are present and in good condition:

- DIHOOM Security Camera Body
- Rechargeable Battery (pre-installed)
- Mounting Bracket
- Mounting Screws and Wall Plugs
- USB Charging Cable
- User Manual (this document)



Image: Contents of the DIHOOM Security Camera package, including the camera, mounting hardware, and charging cable.

### 3. SETUP GUIDE

#### 3.1 Charging the Camera

Before initial use, fully charge the camera's built-in battery. Connect the provided USB charging cable to the camera's charging port and a standard 5V USB power adapter (not included). The charging indicator light will show the charging status.



Image: The DIHOOM camera with an overlay indicating battery charging status.

#### 3.2 App Installation

Download the official DIHOOM app from your smartphone's app store (iOS App Store or Google Play Store). Search for "DIHOOM" or scan the QR code provided in the quick start guide.

#### 3.3 Camera Pairing

1. Open the DIHOOM app and create an account or log in.
2. Tap the "+" icon to add a new device.
3. Follow the on-screen instructions to connect the camera to your 2.4GHz Wi-Fi network. (Note: 5GHz Wi-Fi is not supported).
4. Ensure your camera is close to your Wi-Fi router during the pairing process for a stable connection.



Image: Diagram showing the DIHOOM camera wirelessly connecting to a 2.4G WiFi router, indicating a range of up to 10 meters.

#### 3.4 Mounting the Camera

Choose a suitable location for your camera, ensuring it has a clear view and good Wi-Fi signal. Use the provided mounting bracket, screws, and wall plugs to securely attach the camera to a wall or ceiling. Adjust the camera angle for optimal coverage.



Image: Illustration of the DIHOOM camera being mounted to a wall using a screwdriver and the included bracket.

## 4. OPERATING INSTRUCTIONS

### 4.1 Live View and Playback

Open the DIHOOM app to access the live feed from your camera. You can view real-time video, take screenshots, and initiate manual recordings. To review past events, navigate to the 'History' or 'Cloud' section within the app.



Image: The DIHOOM camera alongside a smartphone displaying the live view interface of the camera app, showing options for screenshot, talk, record, motion detection, light, and siren.

### 4.2 Motion Detection Settings

The camera features intelligent PIR motion detection. You can adjust the detection sensitivity and define specific motion zones within the app to minimize false alarms and focus on critical areas.

# Smart PIR Motion Detection

Intelligent detection reduce false alerts

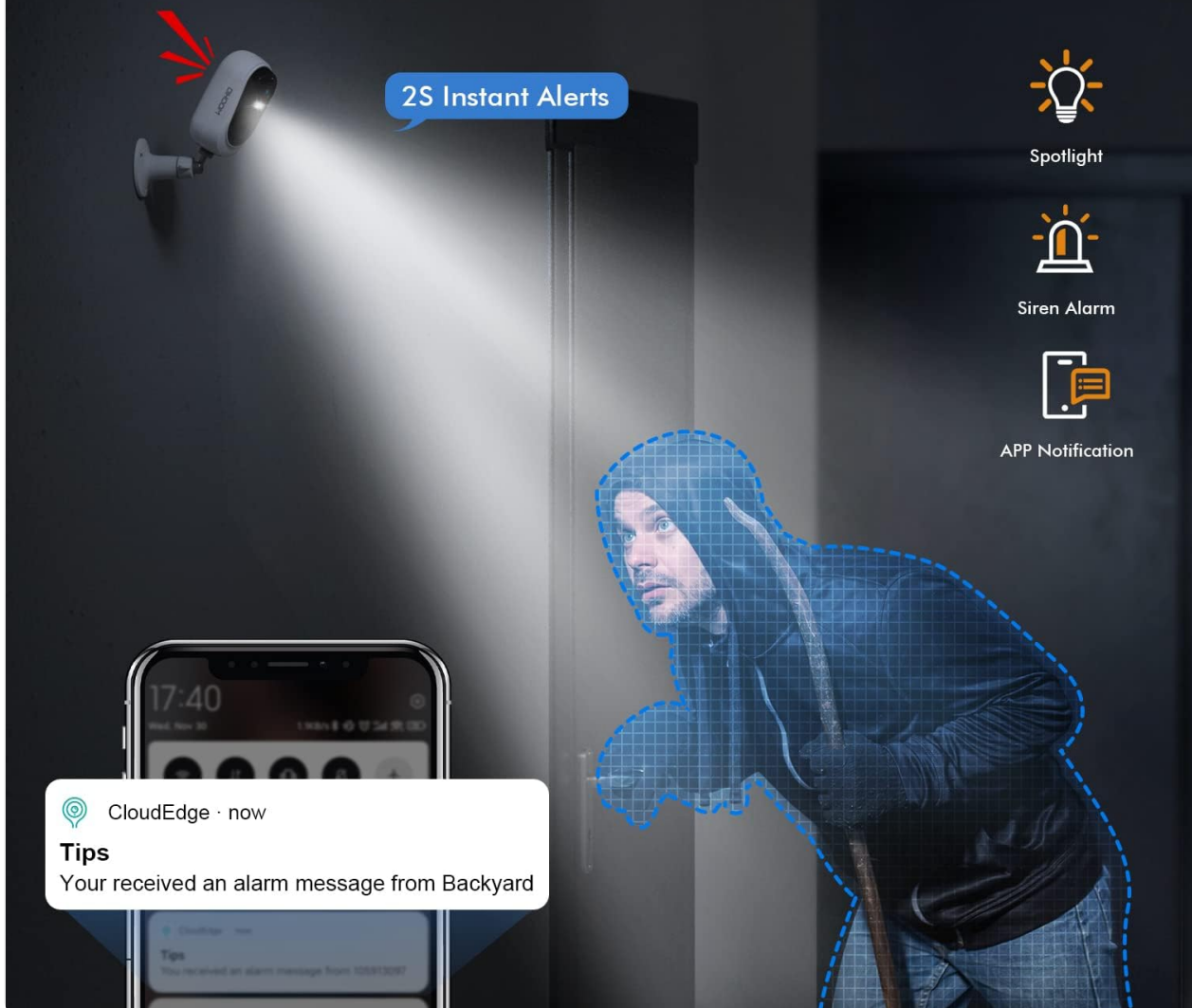


Image: A visual representation of the DIHOOM camera's smart PIR motion detection, showing a spotlight, siren alarm, and app notification triggered by a detected person.



Image: A house with three highlighted areas (1, 2, 3) indicating customizable motion detection zones for the DIHOOM camera.

## 4.3 Two-Way Audio

Utilize the two-way audio feature to speak through the camera's built-in speaker and listen through its microphone. This is ideal for communicating with delivery personnel or family members, or for deterring intruders.

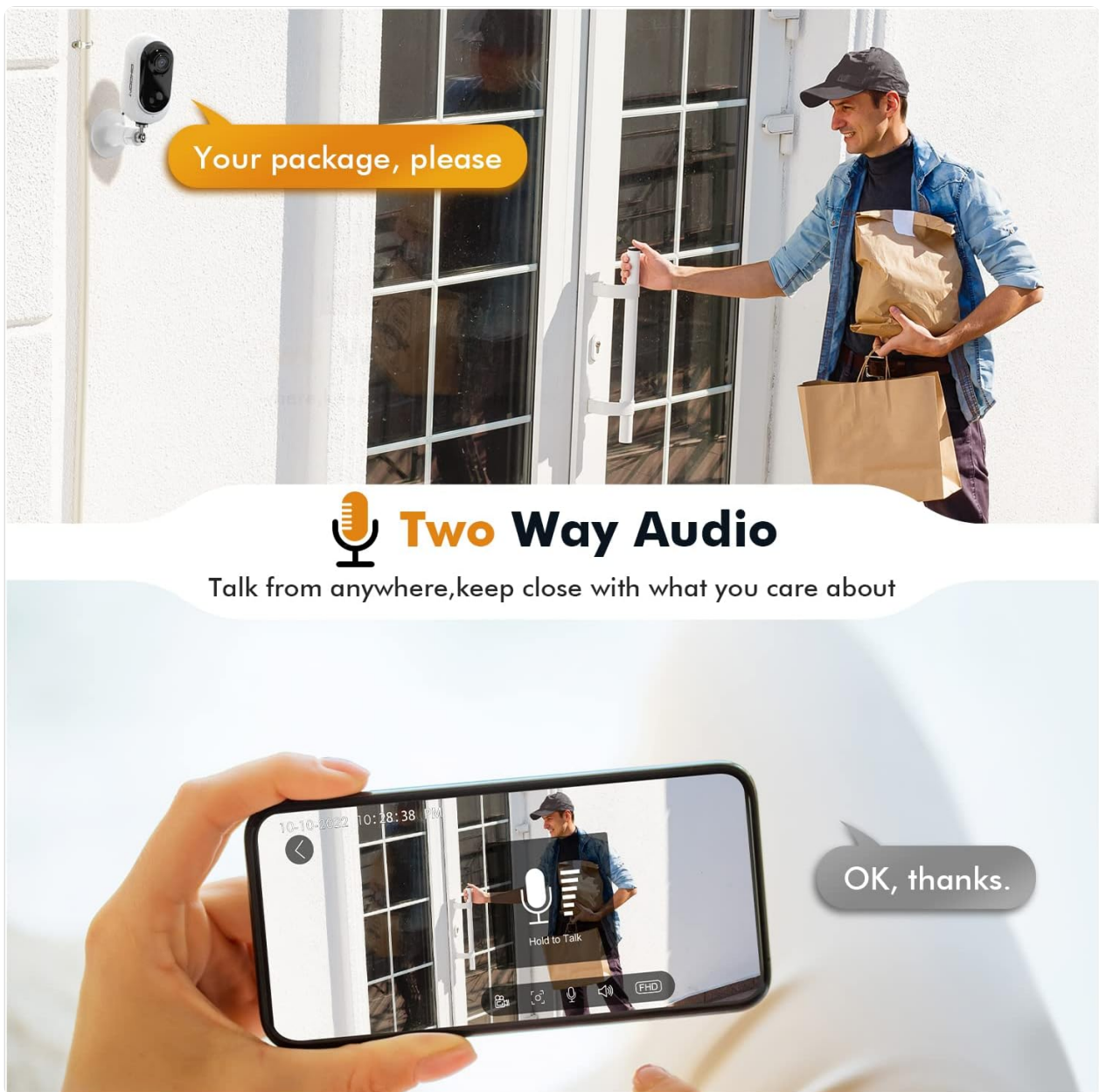


Image: A delivery person at a door, with a speech bubble indicating "Your package, please", and a smartphone screen showing the camera's live view with a microphone icon and a reply bubble saying "OK, thanks.", demonstrating the two-way audio feature.

Image: A father and daughter interacting on a porch, with speech bubbles indicating a conversation, illustrating the two-way audio capability of the DIHOOM camera.

#### 4.4 Night Vision Modes

The camera supports both infrared (IR) night vision and full-color night vision. When motion is detected in low-light conditions, the camera can automatically activate its warm LED light to capture vivid color images and videos.



## 2K Color Night Vision

Motion activate spotlight, deliver full-color night vision even in pitch dark.



Image: The DIHOO camera with its spotlight illuminated, demonstrating its 2K color night vision capability in a dark environment, with a smartphone showing a clear, colored night view.

### 4.5 Storage Options

Your DIHOO camera offers flexible storage solutions. You can insert a micro SD card (up to 128GB) for local storage of recorded events, or subscribe to the encrypted cloud storage service for secure, remote access to your video history.



Image: A global map with various people's faces, and multiple devices (smartphone, tablet, laptop, desktop) displaying the camera's live feed, illustrating the multi-user sharing feature.

## 5. MAINTENANCE

---

### 5.1 Battery Management

To maximize battery life, ensure the camera is fully charged before deployment. The app will notify you when the battery level is low. Regular charging, especially after periods of high activity, will help maintain optimal performance.

## 180 days battery life

No need frequently to take down to charge after a full charge



Image: The DIHOOOM camera mounted outdoors, with text indicating "180 days battery life" and various feature icons like 2K FHD Clear Image, 2.4GHz WiFi, IP65 Waterproof, Multi-User Sharing, Customize Motion Zone, and No Hidden Fee.

### 5.2 Cleaning

Wipe the camera lens and body periodically with a soft, damp cloth to remove dust and dirt. Do not use harsh chemicals or abrasive cleaners, as they may damage the camera's finish or lens.

## 6. TROUBLESHOOTING

- **Camera not connecting to Wi-Fi:** Ensure your Wi-Fi is 2.4GHz. Check Wi-Fi signal strength at the camera's location. Restart your router and the camera.
- **Frequent false alarms:** Adjust the PIR motion detection sensitivity in the app. Define specific motion detection zones to exclude busy areas.
- **Poor video quality:** Ensure the camera lens is clean. Check your Wi-Fi connection speed. If using SD mode, switch to HD/2K in the app settings.



- **Battery drains quickly:** Reduce the frequency of live view access. Adjust motion detection settings to reduce recordings. Ensure the camera is not in an area with constant motion.
- **Two-way audio not working:** Check microphone and speaker permissions for the app on your phone. Ensure the camera's microphone and speaker are not obstructed.

## 7. SPECIFICATIONS

Feature	Specification
Model Name	YS-UK-Q3
Color	White
Material	ABS Plastic
Dimensions (L x W x H)	13 x 7 x 14 cm
Weight	390 grams
Battery Capacity	5200 mAh Lithium-ion
Wireless Technology	Wi-Fi (2.4 GHz only)
Video Resolution	1080p HD (3 Megapixels effective)
Water Resistance Level	IP65 (Waterproof)
Special Features	Built-in Spotlight, Night Vision, Motion Detector, Two-Way Audio, HD Resolution
Recommended Uses	Indoor Security, Outdoor Security

## 8. WARRANTY AND SUPPORT

DIHOOM is committed to providing high-quality products and customer satisfaction. We offer lifetime support for all DIHOOM brand products. If you have any questions, encounter issues, or require assistance with your camera, please do not hesitate to contact the DIHOOM support team. Our dedicated team is ready to help you.

For support, please refer to the contact information provided in the app or on the official DIHOOM website.

