

A4tech FG1010

A4tech FG1010 Wireless Keyboard and Mouse Combo User Manual

Model: FG1010

Brand: A4tech

INTRODUCTION

This manual provides comprehensive instructions for the setup, operation, maintenance, and troubleshooting of your A4tech FG1010 Wireless Keyboard and Mouse Combo. Please read this manual carefully before using the product to ensure optimal performance and longevity.

PACKAGE CONTENTS

- A4tech Wireless Keyboard (FG1010)
- A4tech Wireless Mouse (FG1010)
- USB Receiver
- User Manual (this document)
- *(Batteries may or may not be included depending on region/packaging. Please check packaging.)*

SETUP

1. Installing Batteries

The A4tech FG1010 Wireless Keyboard and Mouse require batteries for operation. Typically, the keyboard uses AAA batteries and the mouse uses AA batteries, but please refer to the battery compartments for specific requirements.

1. Locate the battery compartment on the underside of the keyboard and mouse.
2. Open the battery compartment cover.
3. Insert the required batteries, ensuring correct polarity (+ and -).
4. Close the battery compartment cover securely.

2. Connecting the USB Receiver

The keyboard and mouse share a single USB receiver for wireless connectivity.

1. Locate the USB receiver, usually stored within the mouse's battery compartment or packaged separately.
2. Plug the USB receiver into an available USB port on your computer.
3. Your computer should automatically detect and install the necessary drivers. This may take a few moments.
4. Once installed, the keyboard and mouse should be ready for use.



Image: Top view of the A4tech FG1010 Wireless Keyboard and Mouse Combo. The keyboard is black with grey accents, and the mouse is grey and black.

OPERATING INSTRUCTIONS

Keyboard Usage

- **Power On/Off:** Most wireless keyboards have a power switch, often located on the underside or top edge. Ensure it is in the "On" position.
- **Function Keys:** The keyboard includes standard function keys (F1-F12) and multimedia keys. Refer to the keycap legends for specific functions.
- **Num Lock/Caps Lock/Scroll Lock Indicators:** LEDs on the keyboard indicate the status of Num Lock, Caps Lock, and Scroll Lock.

Mouse Usage

- **Power On/Off:** The mouse typically has a power switch on its underside. Turn it "On" for use and "Off" to conserve battery life when not in use.
- **DPI Adjustment:** Some A4tech mice feature a DPI button to adjust cursor sensitivity. If present, it is usually located near the scroll wheel.
- **Ergonomic Design:** The mouse is designed for comfortable use. Position your hand naturally over the mouse.



Image: Angled view of the A4tech FG1010 Wireless Keyboard and Mouse Combo, showing the ergonomic shape of the mouse.

MAINTENANCE

- **Cleaning:** Use a soft, dry cloth to clean the surfaces of the keyboard and mouse. For stubborn dirt, a slightly damp cloth with mild soap can be used, ensuring no liquid enters the device.
- **Battery Replacement:** Replace batteries when performance degrades or the low battery indicator (if present) illuminates. Dispose of old batteries responsibly.
- **Storage:** When not in use for extended periods, turn off the devices and store them in a cool, dry place.

TROUBLESHOOTING

Keyboard or Mouse Not Responding

- **Check Batteries:** Ensure batteries are correctly installed and have sufficient charge. Replace if necessary.
- **Power Switch:** Verify that the power switches on both the keyboard and mouse are in the "On" position.
- **USB Receiver:** Ensure the USB receiver is securely plugged into a working USB port on your computer. Try a different USB port.
- **Distance:** Ensure the devices are within the effective range of the USB receiver (typically up to 10 meters) and there are no major obstructions.
- **Re-pairing:** Some wireless devices have a re-pairing button or process. Consult the A4tech support website if issues persist.

Lag or Intermittent Connection

- **Interference:** Other wireless devices (Wi-Fi routers, cordless phones) can cause interference. Try moving the receiver or devices away from potential sources of interference.
- **Surface (Mouse):** Ensure the mouse is used on a suitable, non-reflective surface.

SPECIFICATIONS

Feature	Detail
Model Number	FG1010
Brand	A4tech
Connectivity Technology	Radio Frequency (Wireless)
Movement Detection (Mouse)	Optical
Special Features	Ergonomic Design
Compatible Devices	Personal Computer, Tablet
Color	Grey
Package Dimensions	57.1 x 16.3 x 4.6 cm; 820 g



Image: Front view of the A4tech FG1010 Wireless Keyboard and Mouse Combo, showing the full keyboard and mouse.

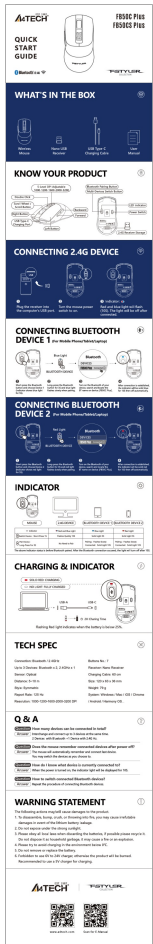
WARRANTY AND SUPPORT

For warranty information and technical support, please refer to the official A4tech website or contact their customer service. Warranty terms may vary by region and retailer.

Manufacturer: A4TECH

Date First Available: 25 September 2022

For further assistance, visit the [A4tech Official Website](#).



[A4TECH FB50C Plus/FB50CS Plus Wireless Mouse Quick Start Guide](#)

Comprehensive quick start guide for the A4TECH FB50C Plus and FB50CS Plus wireless mouse. Learn how to connect via 2.4G wireless or Bluetooth, understand indicator lights, charge the device, and find technical specifications and answers to common questions.



[A4TECH G7-540 Wireless Mouse User Manual](#)

User manual for the A4TECH G7-540 wireless mouse, covering hardware installation, software setup, button functions, pairing, battery status, report rates, DPI settings, RF channel configuration, and troubleshooting.



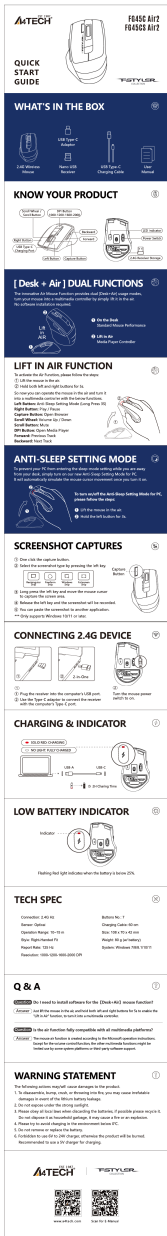
[A4TECH FB10C/FB10CS Wireless Mouse Quick Start Guide](#)

Learn how to set up and use your A4TECH FB10C/FB10CS wireless mouse. This guide covers connecting via 2.4G and Bluetooth, understanding indicator lights, charging, and answers common questions.



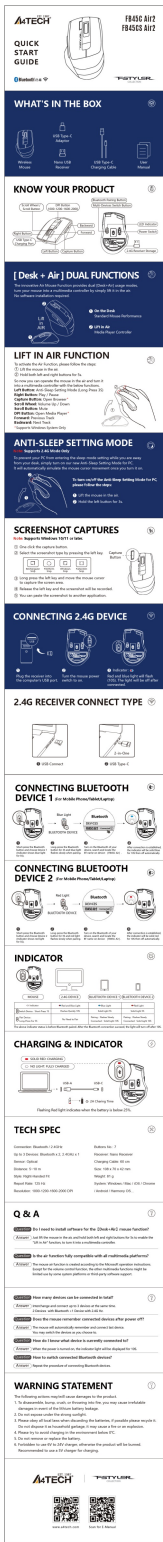
[A4TECH FM50 Plus / FM50S Plus Quick Start Guide | Product Overview and Specifications](#)

Get started with your A4TECH FM50 Plus and FM50S Plus mouse. This guide covers what's in the box, product features, master editing software, and detailed technical specifications.



[A4TECH FG45C\(S\) Air2 Wireless Mouse Quick Start Guide](#)

A comprehensive quick start guide for the A4TECH FG45C(S) Air2 wireless mouse, detailing its features, setup, functions, and specifications for optimal use.



[A4TECH FB45C Air2 / FB45CS Air2 Quick Start Guide](#)

Quick start guide for the A4TECH FB45C Air2 and FB45CS Air2 wireless mouse, detailing dual Desk+Air functions, connectivity options (2.4GHz, Bluetooth), setup, and technical specifications.

--	--