

cimetechn K304

cimetechn Wireless Numeric Keypad K304 User Manual

Model: K304

1. INTRODUCTION

This manual provides comprehensive instructions for the setup, operation, maintenance, and troubleshooting of your cimetechn K304 Wireless Numeric Keypad. Please read this manual carefully before using the product to ensure proper functionality and longevity.

2. PRODUCT OVERVIEW

The cimetechn K304 is a 22-key wireless numeric keypad designed to enhance data entry efficiency for laptops, PCs, and other compatible devices. It features Bluetooth 5.0 connectivity for a stable wireless experience.

Key Features:

- **22-Key Layout:** Extends your existing keyboard with a full numeric keypad, ideal for data entry and spreadsheets.
- **Bluetooth 5.0 Connectivity:** Provides a fast and stable wireless connection without the need for a USB dongle.
- **Ergonomic Design:** Features a 15° tilt angle for comfortable use and improved wrist health.
- **Scissor Switch Keys:** Offers a smooth and comfortable typing experience with reduced noise and fatigue.
- **Wide Compatibility:** Compatible with Windows 7/8/10/11/Vista/XP, Linux, Android, and iOS (partial compatibility for iOS).
- **Portable and Lightweight:** Compact dimensions (12.5 x 8.4 x 3 cm) make it easy to carry.

Package Contents:

- cimetechn K304 Wireless Numeric Keypad
- USB Cable (for charging, if applicable, though product description mentions battery powered)



Figure 2.1: The cimetech K304 Wireless Numeric Keypad, showcasing its compact design and key layout.



Figure 2.2: The cimetech K304 Numeric Keypad positioned next to a laptop, illustrating its use as an extension.

3. SETUP

3.1 Battery Installation

The keypad requires 2 AAA batteries (not included) for operation.

1. Locate the battery compartment cover on the back of the keypad.
2. Slide the cover open.
3. Insert two AAA batteries, ensuring correct polarity (+/-).
4. Close the battery compartment cover securely.

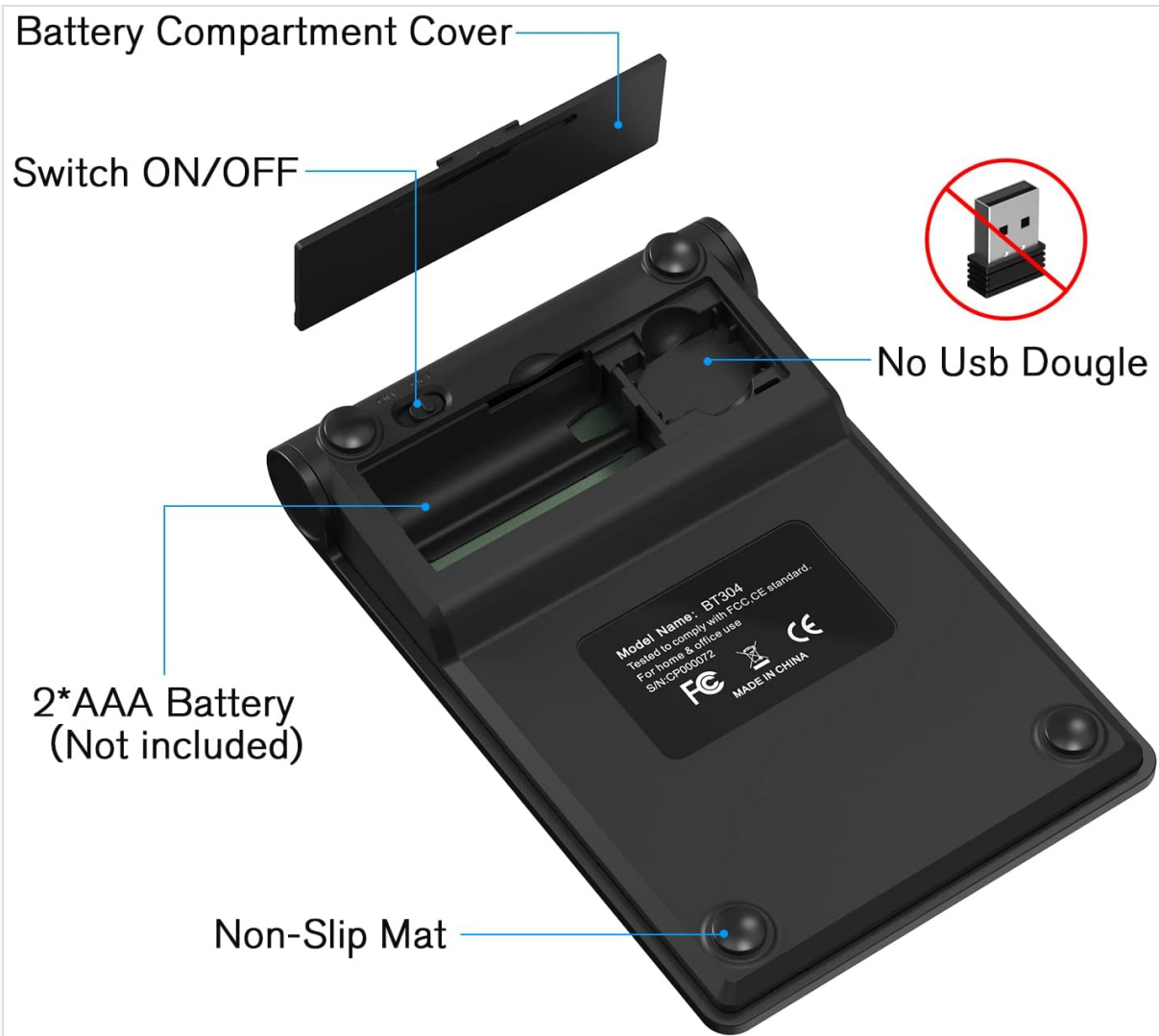


Figure 3.1: View of the battery compartment, showing the location for 2 AAA batteries and the ON/OFF switch.

3.2 Bluetooth Connection

Follow these steps to pair your cimeteck K304 Numeric Keypad with your device:

1. **Turn On:** Locate the ON/OFF switch on the back of the keypad (near the battery compartment) and slide it to the 'ON' position.
2. **Activate Pairing Mode:** Press and hold the Bluetooth activation key (usually marked with a Bluetooth symbol) for more than 5 seconds. The green indicator light on the keypad will start flashing, indicating it is in pairing mode.
3. **Search on Device:** On your computer, laptop, or tablet, navigate to your Bluetooth settings. Ensure Bluetooth is enabled.
4. **Select Keypad:** In the list of available Bluetooth devices, locate and select "BT 5.0 Keyboard" (or a similar name like "cimeteck K304").
5. **Confirm Connection:** Your device should now connect to the keypad. The green indicator light on the keypad will stop flashing and remain solid or turn off, depending on the model, to indicate a successful connection.

BLUETOOTH CONNECTION METHOD

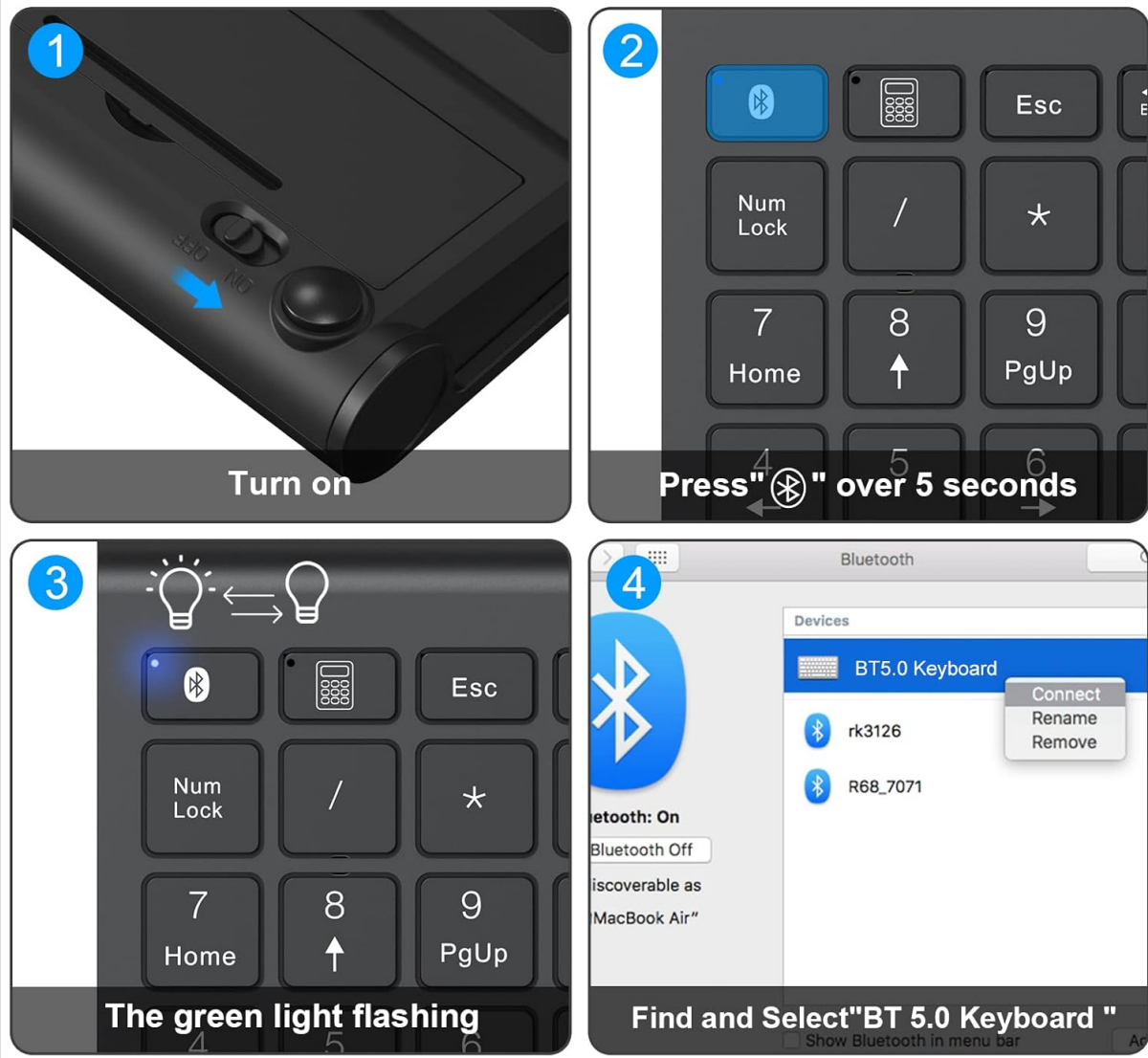


Figure 3.2: Visual guide for connecting the cimtech K304 keypad via Bluetooth, showing the ON/OFF switch, Bluetooth key, flashing indicator, and device pairing screen.

4. OPERATING INSTRUCTIONS

4.1 Key Functions

The cimtech K304 keypad features 22 keys, including standard numeric keys and several function keys:

- **Numeric Keys (0-9):** For entering numbers.
- **Arithmetic Operators (+, -, *, /):** For calculations.
- **Enter:** Confirms input.
- **Esc:** Escape key.
- **Backspace:** Deletes the previous character.
- **Num Lock:** Toggles the numeric keypad function. When Num Lock is active, the numeric keys function as numbers. When inactive, some keys may perform navigation functions (Home, End, PgUp, PgDn, arrow keys).
- **Calculator Key:** Opens the calculator application on compatible operating systems.
- **Arrow Keys (Home, End, PgUp, PgDn):** These functions are typically active when Num Lock is off, allowing for navigation.

MULTI-FUNCTION 22-KEY KEYPAD

Support for various shortcut keys such as Numlock, Home, Calculator and Four Arrow keys to extend your existing keyboard.

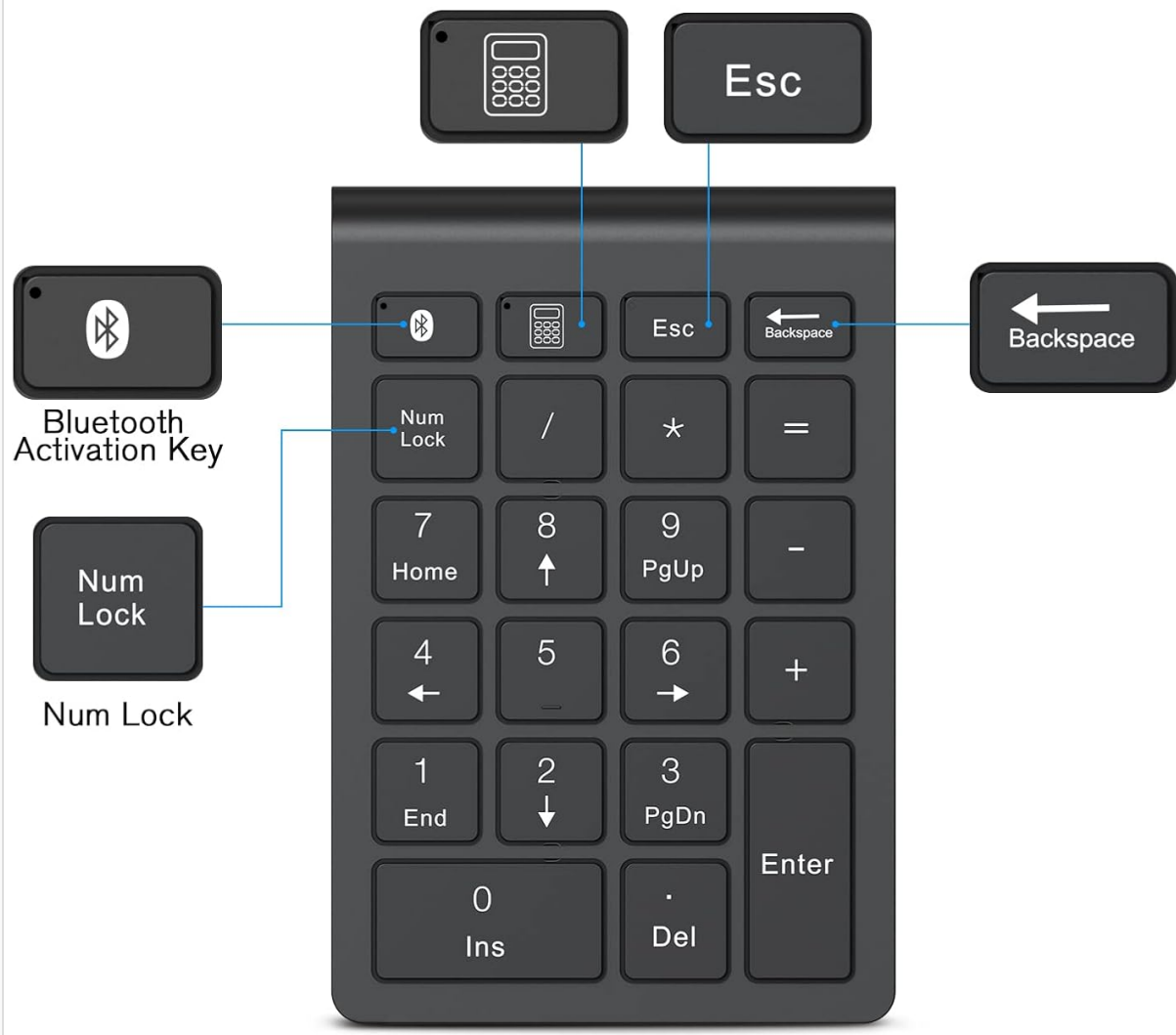
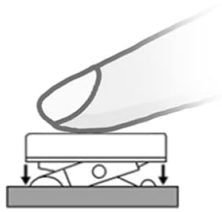


Figure 4.1: Detailed layout of the 22-key keypad, highlighting the Bluetooth activation key, Num Lock, Calculator key, Esc, Backspace, and navigation keys.

4.2 Ergonomic Design

The keypad is designed with a 15-degree tilt angle to provide a more comfortable typing experience and reduce strain on your wrist during extended use.



SCISSOR SWITCH KEYS

Less noise and fatigue, smooth and comfortable typing experience



ERGONOMIC DESIGN

15° design provides the comfortable typing angle

Figure 4.2: Illustration of the keypad's 15-degree ergonomic tilt, designed for user comfort.

4.3 Compatibility

The cimeteck K304 keypad is broadly compatible with various operating systems and devices:

- **Operating Systems:** Windows 7 / 8 / 10 / 11 / Vista / XP, Linux.
- **Devices:** Laptops, Desktop PCs, Surface Pro.
- **Note on iOS:** The keypad has partial compatibility with iOS. Some functions may not work as expected.



OS



Windows



iOS



Android



BIUETOOTH 5.0 CONNECTION

Without latency and lag, bluetooth 5.0 technology provides fast and stable data transmission.

Figure 4.3: Icons representing compatibility with OS, Windows, iOS, and Android operating systems.

5. MAINTENANCE

To ensure the longevity and optimal performance of your cimetech K304 Numeric Keypad, follow these maintenance guidelines:

- **Cleaning:** Use a soft, dry cloth to wipe the surface of the keypad. For stubborn dirt, a slightly damp cloth with mild soap can be used, followed by a dry cloth. Avoid harsh chemicals or abrasive materials.
- **Storage:** When not in use for extended periods, store the keypad in a cool, dry place. Consider removing the batteries if storing for several months to prevent leakage.
- **Avoid Liquids:** Do not expose the keypad to liquids. In case of accidental spills, immediately turn off the keypad, remove batteries, and allow it to dry completely before attempting to use it again.
- **Handle with Care:** Avoid dropping the keypad or subjecting it to strong impacts, which can damage internal components.

6. TROUBLESHOOTING

If you encounter issues with your cimetech K304 Numeric Keypad, refer to the following troubleshooting steps:

Problem	Possible Cause	Solution
Keypad does not turn on.	Batteries are dead or incorrectly inserted.	Replace batteries with new AAA batteries, ensuring correct polarity. Check if the ON/OFF switch is in the 'ON' position.
Keypad does not connect via Bluetooth.	Bluetooth is off on your device; keypad is not in pairing mode; interference.	Ensure Bluetooth is enabled on your device. Press and hold the Bluetooth activation key on the keypad for 5 seconds until the indicator flashes. Move closer to your device. Remove and re-pair the device in your Bluetooth settings.
Keys are not responding or typing incorrect characters.	Num Lock is off; connection issue; software conflict.	Press the 'Num Lock' key to activate numeric input. Re-establish the Bluetooth connection. Test on another device to rule out software issues.
Keypad frequently disconnects.	Low battery; distance from device; interference.	Replace batteries. Ensure the keypad is within 10 meters of your device. Minimize interference from other wireless devices.
Keypad needs battery removal to reactivate.	Potential power management issue or deep sleep mode.	Ensure the keypad is fully powered off when not in use by sliding the ON/OFF switch. If the issue persists, try new batteries. This behavior might indicate a specific power-saving feature or a minor firmware characteristic.

7. SPECIFICATIONS

Feature	Detail
Brand	cimetech
Model Number	K304
Connectivity Technology	Bluetooth 5.0
Number of Keys	22
Key Type	Scissor Switch
Power Source	2 x AAA Batteries (not included)
Operating System Compatibility	Windows 7/8/10/11/Vista/XP, Linux, Android, iOS (partial)
Device Compatibility	Laptop, PC, Surface Pro
Dimensions (L x W x H)	12.5 x 8.4 x 3 cm (4.92 x 3.31 x 1.18 inches)
Material	Plastic
Color	Dark Black
Special Feature	Lightweight, Ergonomic Design

8. WARRANTY AND SUPPORT

The cimetech K304 Wireless Numeric Keypad comes with a manufacturer's warranty of **2 years** from the date of purchase. This warranty covers defects in materials and workmanship under normal use. For technical support, warranty claims, or further assistance, please contact cimetech customer service through the retailer where the product was purchased or visit the official cimetech website.

© 2023 cimetech. All rights reserved.