

Manuals+

[Q & A](#) | [Deep Search](#) | [Upload](#)

manuals.plus /

- › [ScopeAround](#) /
- › [ScopeAround Wireless Otoscope User Manual](#)

ScopeAround B0BG7WCKPB

ScopeAround Wireless Otoscope User Manual

Model: B0BG7WCKPB

INTRODUCTION

The ScopeAround Wireless Otoscope is a sophisticated ear examination tool designed for both personal and professional use. Featuring a 3.9mm ultra-tiny camera with 720p HD resolution and 6 LED lights, it provides clear, detailed views of the ear canal. Its wireless design allows for seamless connection to mobile devices, enabling real-time viewing, photo capture, and video recording. This manual provides essential information for safe and effective operation of your device.



Image: Banner highlighting the wireless ear wax removal otoscope with icons for photo, video, 3.9mm, gyroscope, WiFi, and 720p HD.

SAFETY INFORMATION

For detailed safety guidelines and important warnings, please refer to the official Safety Information PDF document provided by the manufacturer. It is crucial to read and understand all safety instructions before using the device.

You can access the Safety Information document here: [Safety Information \(PDF\)](#).

Always ensure the device is at a comfortable temperature before insertion. The otoscope is designed to operate at approximately 77°F (25°C) to prevent discomfort.



Image: Close-up of the otoscope with a temperature reading of 77°F, indicating safe operating temperature.

Package Contents

Upon opening the package, verify that all components are present:

- ScopeAround Wireless Otoscope
- Various Ear Specula (silicone ear picks)
- Micro USB Charging Cable
- Cotton Swabs
- Alcohol Prep Pads
- User Manual



Image: An overhead view of the product packaging and its contents, including the otoscope, various ear specula, charging cable, cotton swabs, alcohol prep pads, and user manual.

Device Components

Familiarize yourself with the main parts of the otoscope:

- **Battery Level Indicator:** Displays the remaining battery life. Recharge when the light drops to the first level.
- **Power Button:** Long press to power the device on and off.

- **Camera/LEDs:** The camera light will be on by default upon power-on.
- **Micro USB Charging Port:** For charging the device (use a 5V/1A or 5V/2A charger).



Image: A diagram illustrating the key components of the otoscope, including the battery level indicator, power button, camera/LEDs, and Micro USB charging port.

Key Features

- **High-Definition Camera:** Equipped with a professional CMOS image sensor and 6 LED lights, providing 720p HD image

quality for clear observation.

- **Ultra-Thin Design:** Features a 3.9mm ultra-tiny camera, allowing easy penetration into the ear canal for detailed examination.
- **Built-in Smart Gyroscope:** Enhances precision and stability during examinations, ensuring a steady view.
- **Wireless Connectivity:** Connects instantly to mobile devices via Wi-Fi for real-time viewing, photo taking, and video recording.
- **Removable Soft Silicone Ear Picks:** Designed for comfort and safety, preventing scratches during operation.
- **Long-Lasting Battery:** Built-in 800mAh rechargeable battery provides extended usage time.



Image: An exploded view showing the internal components of the HD ear camera, including the CMOS image sensor and 6 LED lights, emphasizing fast and clear detail capture.



Image: A banner highlighting the 3.9mm ultra-fine diameter HD technology, designed for clearer observation and problem identification.

BUILT-IN SMART GYROSCOPE

Enhanced Precision and Stability
During Examinations



Image: Illustration of the built-in smart gyroscope, showing how it enhances precision and stability during ear examinations at various angles.



Image: A close-up of the soft silicone ear pick, emphasizing its flexible and safe design for ear cleaning.

SETUP

Follow these steps to set up your ScopeAround Wireless Otoscope:

1. **Download the App:** Scan the QR code provided in the user manual or search for "Smart Endoscope" on your device's app store (App Store for iOS, Google Play Store for Android).
2. **Power On:** Long press the power button on the otoscope to turn it on.
3. **Connect to Wi-Fi:** Go to your mobile device's Wi-Fi settings. Find and connect to the Wi-Fi network named "Smart Otoscope-XXX" (where XXX is a unique identifier). *Note: The device connects via Wi-Fi, NOT Bluetooth.*
4. **Launch App:** Open the "Smart Endoscope" app and begin using your otoscope.

EASY TO SET UP

NOTE: Connect via the otoscope WiFi,
NOT Bluetooth



Download and install "Smart Endoscope"
on APP store or Google Play Store



Long press the power button to
turn on the otoscope



Connect the WiFi named "Smart
Otoscope XXX"



Run the APP and start enjoy it .

Image: A four-panel graphic illustrating the easy setup process: scanning a QR code for app download, long-pressing the power button, connecting to the otoscope's Wi-Fi, and running the app.

The "Smart Endoscope" app can also be found at: <https://gto.so/smart-endoscope>

Device Compatibility

The ScopeAround Wireless Otoscope is compatible with a wide range of mobile devices:

- iPhone & Android phones
- iPad & Android Tablets

Note: This device is NOT compatible with Macbook & Windows PC.

COMPATIBLE DEVICES

Stable WiFi Connection



iPhone & Android phones



iPad & Android Tablets

Note: NOT Compatible with Macbook & Windows PC

Image: A visual representation of the otoscope connecting wirelessly to various compatible devices, including iPhones, Android phones, iPads, and Android tablets.

OPERATING INSTRUCTIONS

Using the Otoscope

Once connected, you can begin observing the ear canal. Gently insert the otoscope into the ear, ensuring the soft silicone ear pick

is securely attached to prevent injury. Observe the live feed on your connected mobile device.

PROTECTION & CONVENIENCE

Removable and Soft Silicone Ear Pick



Image: A comparison showing safe use of the otoscope with a soft silicone ear pick versus a dangerous method that could cause injury to the eardrum.

Viewing Modes

The app offers two viewing modes to enhance your examination:

- **Full Screen Mode:** Provides a real-time, full-screen view of the ear canal.

- **Split Screen Mode:** Allows you to compare the real-time image with previously captured photos, facilitating analysis and tracking changes over time.

MULTIPLE VIEWING MODES

Full Screen: See clearer images in real-time

Split-Screen: Compare the real-time image with the previous



Note: NOT Compatible with Macbook & Windows PC

Image: A visual demonstration of the app's full-screen mode for real-time viewing and split-screen mode for comparing current and previous ear canal images.

Photo and Video Capture

The app allows you to capture still images and record videos of your ear canal. These features are useful for documenting

observations, tracking progress, or sharing information with healthcare professionals for remote consultation.

Sharing Ear Condition Insights Instantly

Capture photos and record video with ease,
and receive prompt expert consultation from
your physician!

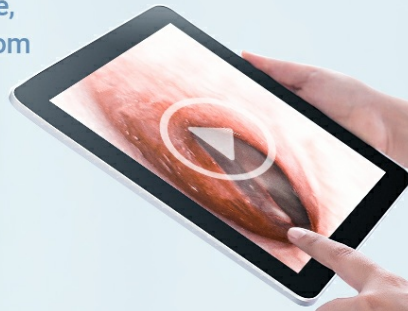
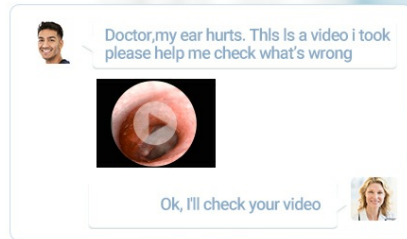


Image: A graphic depicting a user sharing a captured image of their ear canal with a doctor via a messaging app, illustrating the ease of remote consultation.

Product Demonstration Video

Watch this official product video for a visual guide on how to use the ScopeAround Digital Otoscope, including setup and practical application.

Your browser does not support the video tag.

Video: A demonstration of the ScopeAround Digital Otoscope in use, showing how it connects to a smartphone and provides a clear view of the ear canal for examination.

MAINTENANCE

Proper maintenance ensures the longevity and hygiene of your otoscope:

- **Cleaning the Lens:** The otoscope features an IP67 waterproof lens, allowing direct cleaning of the camera tip. Use the provided cotton swabs or a soft, lint-free cloth with alcohol prep pads to gently wipe the lens after each use.
- **Cleaning Ear Picks:** The removable silicone ear picks should be cleaned thoroughly with soap and water or an alcohol wipe after each use. Ensure they are completely dry before reattaching.



Image: A hand demonstrating how to clean the otoscope lens using a cotton swab, ensuring clear visibility for future use.

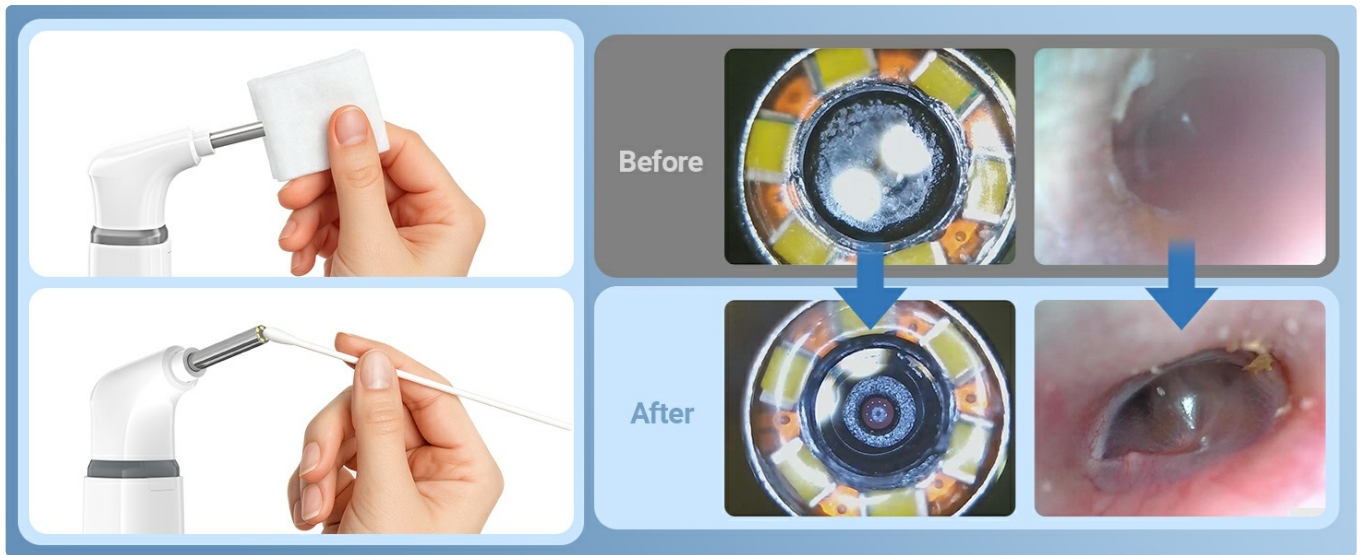


Image: A split image showing the otoscope lens and an ear canal "Before" and "After" cleaning, demonstrating the improvement in clarity.

TROUBLESHOOTING

If you encounter issues with your ScopeAround Wireless Otoscope, refer to the following common problems and solutions:

Problem	Possible Cause	Solution
Device does not power on.	Low battery or power button not pressed correctly.	Charge the device using the provided USB cable. Ensure you long-press the power button.
Cannot connect to Wi-Fi.	Incorrect Wi-Fi network selected or Wi-Fi not enabled on otoscope.	Ensure the otoscope is powered on and broadcasting its Wi-Fi signal. Select the "Smart Otoscope-XXX" network. Confirm you are not trying to connect via Bluetooth.
Image is blurry or dark.	Dirty camera lens or insufficient lighting.	Clean the camera lens as described in the Maintenance section. Ensure the LED lights are on.
App crashes or freezes.	App software issue or device compatibility.	Restart the app and the otoscope. Ensure your mobile device's operating system is up to date. Reinstall the app if necessary.
Device gets warm during use.	Normal operation, especially with prolonged use.	This is normal. If it becomes excessively hot or uncomfortable, discontinue use and allow it to cool down.

SPECIFICATIONS

Feature	Detail
Product Dimensions	6.26 x 3.11 x 0.39 inches
Item Weight	5.8 ounces
ASIN	B0BG7WCKPB
Manufacturer	SGU
Color	White

Feature	Detail
Video Capture Resolution	720p
Lens Diameter	3.9mm
Battery Capacity	800mAh (rechargeable)
Waterproof Rating	IP67 (lens)

WARRANTY AND SUPPORT

ScopeAround is committed to providing innovative solutions and excellent customer service. For any questions, technical support, or warranty inquiries, please contact the ScopeAround customer support team. Refer to the product packaging or the official ScopeAround website for contact details.

You can also visit the official ScopeAround Store on Amazon for more information and support: [ScopeAround Store](#).