

## ACEFAST T6

# ACEFAST T6 Wireless Earbuds User Manual

Model: T6

## 1. INTRODUCTION

The ACEFAST T6 Wireless Earbuds are designed to provide a high-quality audio experience with advanced features such as Environmental Noise Cancellation (ENC), HiFi stereo sound, and intuitive touch controls. This manual provides detailed instructions for setting up, operating, maintaining, and troubleshooting your earbuds to ensure optimal performance and longevity.



Image: The ACEFAST T6 Wireless Earbuds with their translucent charging case, showcasing the sleek design and LED digital display.

## Key Features:

- **ENC Noise Canceling:** Equipped with ENC noise reduction and software call noise reduction algorithm for clearer call quality.
- **HiFi Stereo Sound:** Features titanium dome composite membrane moving coil speakers for a wider sound field and shocking low frequency experience.
- **Smart Touch Control:** Allows easy control of calls, music playback, volume, and track switching directly from the earbuds.
- **Advanced Bluetooth Chip:** High computing power Bluetooth chip solution ensures stable signal and clear sound quality.
- **Auto Quick Pairing:** Connects automatically to the last paired device upon opening the charging case.
- **Fast Charging & Long Battery Life:** Provides 4 hours of playback on a single charge, extendable up to 24 hours with the portable charging case.
- **LED Digital Display:** Accurate display of power levels for both the charging case and individual earbuds.

- **Water Resistant:** Designed to prevent splash damage from sweat and raindrops.

## 2. PACKAGE CONTENTS

---

Please verify that all items listed below are included in your package:

- Earbud x 2 (Left and Right)
- Silicone Protective Case x 1
- USB-C Cable x 1
- Charging Case x 1
- User Manual x 1
- XS/S/M/L Eartips x 4 pairs

# What's in The Box



Image: All components included in the ACEFAST T6 Wireless Earbuds package, neatly arranged.

## 3. PRODUCT OVERVIEW

The ACEFAST T6 earbuds feature a compact and ergonomic design, ensuring a comfortable and secure fit. The translucent charging case not only protects your earbuds but also provides real-time battery information through its integrated LED digital display.

# Colored All Around

Ingenious pursuit, extreme details, all parts of the fuselage are the same color

5  
Details

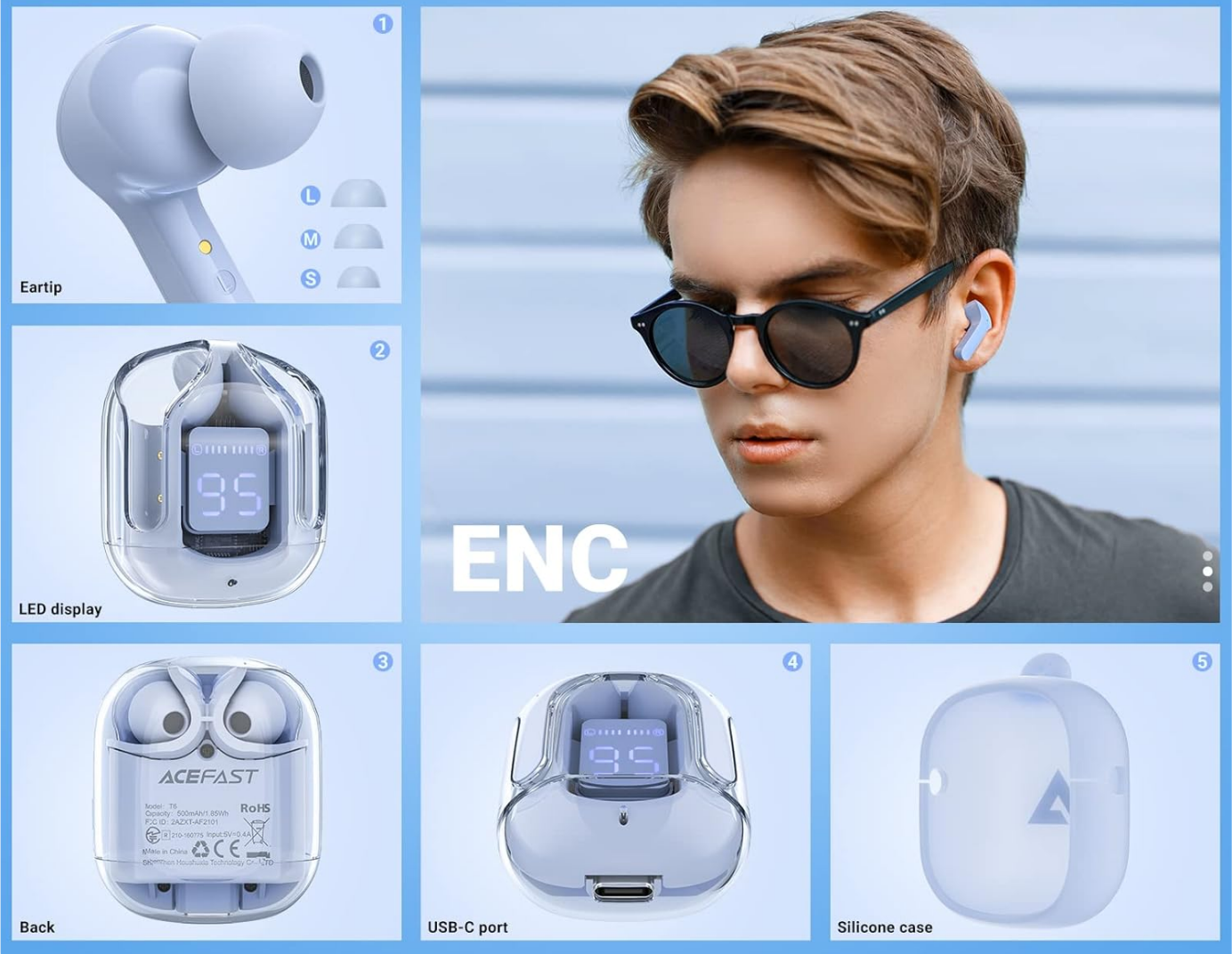


Image: A detailed breakdown of the ACEFAST T6 Earbuds, highlighting the eartips, LED display, USB-C port, and the silicone protective case.

## Components:

- **Earbuds:** Left and Right earbuds with touch control sensors and built-in microphones.
- **Charging Case:** Portable case for charging and storing earbuds, featuring an LED digital display.
- **USB-C Port:** Located on the charging case for power input.
- **Eartips:** Various sizes (XS, S, M, L) to ensure a comfortable and secure fit for different ear canals.

## 4. SETUP

### 4.1 Charging the Earbuds and Case

Before first use, fully charge both the earbuds and the charging case. The LED digital display on the case will show the battery percentage of the case and the charging status of each earbud.



- **Charging the Case:** Connect the provided USB-C cable to the charging port on the case and to a power source. The digital display will show the charging progress.
- **Charging the Earbuds:** Place the earbuds into their respective slots in the charging case. They will automatically begin charging. The display will indicate their charging status.
- **Fast Charging:** A quick 10-minute charge can provide approximately 1.5 hours of use.



Image: The LED digital display on the charging case showing the battery level of the case and the individual earbuds.

## 4.2 Pairing with Your Device

The ACEFAST T6 earbuds utilize an advanced Bluetooth chip for quick and stable connections.

### 1. Initial Pairing:

- Open the charging case. The earbuds will automatically enter pairing mode.
- On your device (smartphone, tablet, etc.), go to Bluetooth settings and turn Bluetooth on.
- Select "ACEFAST T6" from the list of available devices.
- Once connected, you will hear a confirmation tone, and the earbuds will be ready for use.

2. **Auto Reconnect:** After the first successful connection, the earbuds will automatically connect to your last paired device as soon as you open the charging case.

## Ultra Lightweight Design



## Compatible Widely



## Auto Reconnect

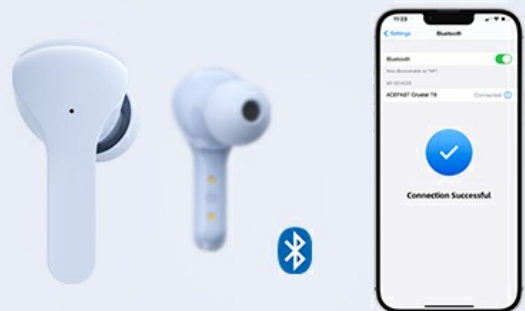
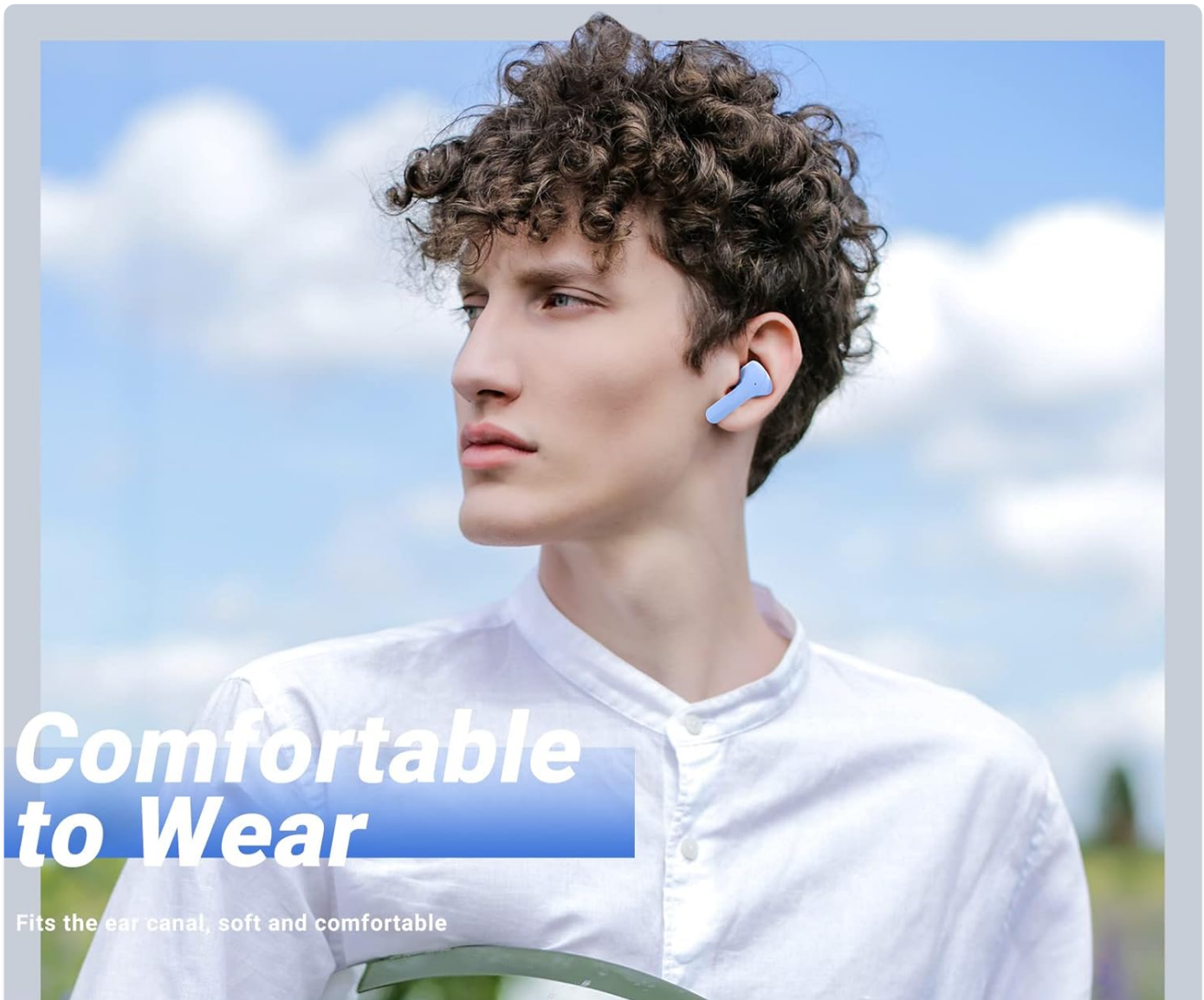


Image: Illustration showing the wide compatibility of ACEFAST T6 earbuds with various Bluetooth-enabled devices and the automatic reconnection process.

## 5. OPERATING INSTRUCTIONS

### 5.1 Wearing the Earbuds

For optimal sound quality and comfort, choose the ear tips that best fit your ear canals. Gently insert the earbuds into your ears and rotate them slightly to ensure a secure and comfortable fit.



# Comfortable to Wear

Fits the ear canal, soft and comfortable

|                                                 |                                        |                                                                       |                                                                                      |
|-------------------------------------------------|----------------------------------------|-----------------------------------------------------------------------|--------------------------------------------------------------------------------------|
| <b>5H</b><br>Music playing time<br>(50% volume) | <b>3H</b><br>Call time<br>(70% volume) | <b>25H</b><br>Using with the charging case<br>(support fast charging) | <b>500</b> mAh<br>Charging case battery capacity<br>(can charge the earbuds 4 times) |
|-------------------------------------------------|----------------------------------------|-----------------------------------------------------------------------|--------------------------------------------------------------------------------------|

Image: A person wearing the ACEFAST T6 earbuds, demonstrating their comfortable and ergonomic design.

## 5.2 Smart Touch Controls

The ACEFAST T6 earbuds feature intuitive touch controls on each earbud. Refer to the table below for specific functions:



# Smart Touch Control



Image: A visual guide to the smart touch controls on the ACEFAST T6 earbuds, illustrating various gestures for call and music management.

| Action                      | Function                                          |
|-----------------------------|---------------------------------------------------|
| Double Tap (L/R)            | Answer/Hang up Call                               |
| Press and Hold (L/R) for 2s | Reject Call                                       |
| Press and Hold (L/R) for 2s | Activate Voice Assistant (Siri, Google Assistant) |
| Double Tap (L/R)            | Play/Pause Music                                  |
| Triple Tap (Left)           | Previous Track                                    |
| Triple Tap (Right)          | Next Track                                        |
| Single Tap (Left)           | Volume Down                                       |

| Action             | Function  |
|--------------------|-----------|
| Single Tap (Right) | Volume Up |

### 5.3 Environmental Noise Cancellation (ENC)

The ACEFAST T6 earbuds feature ENC technology, which effectively suppresses most reverse environmental noise during calls. This ensures that your voice is clear and audible to the person on the other end, even in noisy surroundings.



Image: An internal view of the earbud highlighting the ENC technology and its effect on reducing environmental noise for clearer calls.

### 5.4 HiFi Stereo Sound

Experience rich and immersive audio with the HiFi stereo sound of the ACEFAST T6 earbuds. The titanium dome composite membrane moving coil speakers deliver a wide sound field and powerful low frequencies, enhancing your music listening experience.

## 6. MAINTENANCE

Proper maintenance ensures the longevity and optimal performance of your ACEFAST T6 Wireless Earbuds.

- **Cleaning:** Regularly clean the earbuds and charging case with a soft, dry, lint-free cloth. For stubborn dirt, slightly dampen the cloth with water. Do not use abrasive cleaners or solvents.
- **Eartips:** Remove the silicone eartips and clean them with mild soap and water. Ensure they are completely dry before reattaching them to the earbuds.
- **Charging Contacts:** Periodically check and clean the charging contacts on both the earbuds and inside the charging case to ensure a good connection. Use a dry cotton swab.
- **Storage:** When not in use, store the earbuds in their charging case to protect them from dust and damage.
- **Water Resistance:** The earbuds are water resistant, designed to withstand sweat and light splashes. Do not submerge them in water or expose them to heavy rain. Dry them thoroughly if they get wet.

## 7. TROUBLESHOOTING

If you encounter any issues with your ACEFAST T6 Wireless Earbuds, please refer to the following common problems and solutions:

| Problem                        | Possible Cause                                                                                             | Solution                                                                                                                                                  |
|--------------------------------|------------------------------------------------------------------------------------------------------------|-----------------------------------------------------------------------------------------------------------------------------------------------------------|
| Earbuds not pairing/connecting | Bluetooth is off on device; Earbuds not in pairing mode; Already connected to another device; Low battery. | Ensure Bluetooth is on. Place earbuds in case, close, then open to re-enter pairing mode. Disconnect from other devices. Charge earbuds and case.         |
| Only one earbud working        | One earbud has low battery; Earbuds not properly synced.                                                   | Ensure both earbuds are charged. Place both earbuds back in the case, close it, wait a few seconds, then open it again to re-sync.                        |
| No sound or low volume         | Volume too low on device/earbuds; Earbuds not properly seated; Obstruction in earbud speaker.              | Increase volume on both your device and the earbuds. Adjust earbuds for a secure fit. Clean earbud speakers if necessary.                                 |
| Charging case not charging     | Faulty cable/adaptor; Dirty charging port.                                                                 | Try a different USB-C cable and power adapter. Clean the USB-C charging port on the case.                                                                 |
| Call quality is poor           | Weak signal; Microphone obstruction; Excessive background noise.                                           | Move closer to your connected device. Ensure microphones are not covered. ENC should reduce background noise, but extreme noise may still affect clarity. |

## 8. SPECIFICATIONS

Detailed technical specifications for the ACEFAST T6 Wireless Earbuds:

| Feature                 | Specification                   |
|-------------------------|---------------------------------|
| Model Name              | T6                              |
| Noise Control           | Active Noise Cancellation (ENC) |
| Connectivity Technology | Wireless (Bluetooth)            |

| Feature                             | Specification                      |
|-------------------------------------|------------------------------------|
| Wireless Communication Technology   | Bluetooth                          |
| Control Type                        | Touch Control                      |
| Item Weight                         | 3.5 Grams (per earbud)             |
| Water Resistance Level              | Water Resistant                    |
| Frequency Range                     | 20Hz~20kHz                         |
| Battery Life (Earbuds)              | 4 Hours (single charge)            |
| Carrying Case Battery Average Life  | 24 Hours (with charging case)      |
| Charging Time (Earbuds)             | 1.5 Hours                          |
| Carrying Case Battery Charging Time | 2 Hours                            |
| Bluetooth Range                     | 10 Meters                          |
| Product Dimensions                  | 1.35 x 0.73 x 0.97 inches          |
| Material                            | Silicone (eartips), Plastic (case) |
| Impedance                           | 2 Ohm                              |

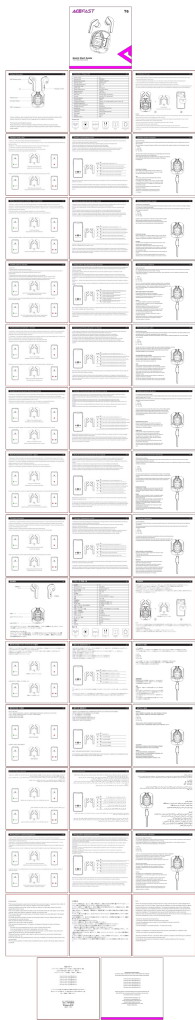
## 9. WARRANTY AND SUPPORT

ACEFAST products are manufactured to the highest quality standards. In the unlikely event of any issues, ACEFAST offers customer support and warranty services. Please refer to the official ACEFAST website or your purchase documentation for specific warranty terms and conditions.

For technical support or warranty claims, please contact ACEFAST customer service through their official channels. Keep your purchase receipt as proof of purchase.

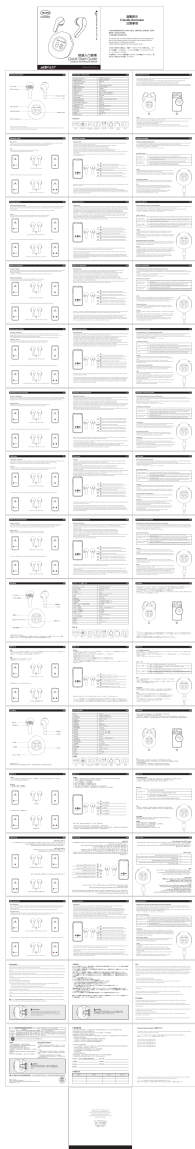
You can visit the official ACEFAST store on Amazon for more information:[ACEFAST Official Store](#)





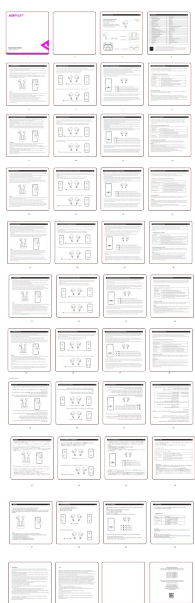
[ACEFAST T6 True Wireless Stereo Earbuds Quick Start Guide](#)

Comprehensive guide for ACEFAST T6 true wireless stereo earbuds, detailing setup, operation for calls and music, charging, specifications, precautions, and support.



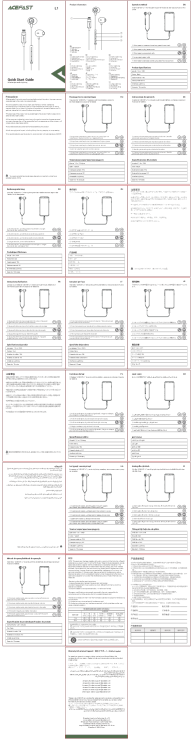
### [ACEFAST T8/AT8 Crystal\(2\) Color Bluetooth Earbuds Quick Start Guide](#)

Comprehensive quick start guide for ACEFAST T8/AT8 Crystal(2) Color Bluetooth Earbuds, detailing setup, operation, specifications, and safety precautions for wireless audio.



### [ACEFAST T2 Hybrid Noise Cancelling Earbuds: Quick Start Guide](#)

Comprehensive quick start guide for ACEFAST T2 Hybrid Noise Cancelling Earbuds, covering pairing, operation, charging, and troubleshooting in multiple languages.



[ACEFAST L1 Wired Earphones for Lightning: User Manual & Specifications](#)

Comprehensive user guide for ACEFAST L1 wired earphones for Lightning devices, covering product specifications, detailed operation instructions, control functions, safety precautions, warranty information, and compliance details.



[ACEFAST AceFit Air Wireless Bluetooth Earphones User Manual](#)

Comprehensive user guide for ACEFAST AceFit Air wireless Bluetooth earphones, covering setup, pairing, touch controls, app features, IP55 rating, and charging.



[ACEFAST ACECLIP Pro Wireless Earbuds \(FA006\) User Manual and Specifications](#)

Comprehensive user manual for ACEFAST ACECLIP Pro wireless earbuds (Model FA006), covering app download, operation, features, technical specifications, charging instructions, and warranty information.