

DAWEI S1

DAWEI S1 Veterinary Ultrasound Machine User Manual

Model: S1 with Convex Probe

1. INTRODUCTION

The DAWEI S1 Veterinary Ultrasound Machine is a portable B-ultrasound scanner designed for pregnancy diagnosis and general health monitoring in various animals. Its compact and robust design makes it suitable for both farm and clinical environments. This manual provides essential information for the safe and effective operation, maintenance, and troubleshooting of your S1 unit.

2. PRODUCT OVERVIEW

The DAWEI S1 features a 5.6-inch LED HD display and a user-friendly interface. It is designed for comfortable handheld operation, weighing approximately 950g. The device is protected by a drop-resistant soft rubber body, enhancing durability in various working conditions.



Figure 2.1: Overview of the DAWEI S1 Veterinary Ultrasound Machine.

lightweight and portable,

Perfect for one-handed use in outdoor settings like farms.

User-friendly design makes it a reliable tool

for various situations,

Ensuring efficient and accurate imaging on the go.



Figure 2.2: The DAWEI S1 in handheld use, highlighting its portability.



comfortable one-handed grip

easy operation, and brings together all essential features in one user-friendly design.

The interface is simple and intuitive, with all primary functions consolidated in an easily navigable main menu. You can swiftly find the desired features without the need for cumbersome procedures.

The strap can be adjusted according to individual preferences to ensure a comfortable and snug fit. Distribute the weight of the machine effectively



Figure 2.3: Detailed view of the S1 control panel.

Convex probes



Convex probe

Frequency: 2.5MHz - 5.0MHz
Application: pregnancy diagnosis for sheep, goats, pigs and dogs.

Figure 2.4: The standard 3.5MHz Convex Probe.

Key Features:

- **Display:** 5.6-inch LED HD Display
- **Weight:** Approximately 950g (device only)
- **Probe:** Standard 3.5MHz Convex Probe (frequency range 2.5MHz - 5.0MHz)
- **Display Modes:** B, BB, 4B, BM, M
- **Focus:** Electronic focus with adjustable frequency range
- **Storage:** 32GB permanent storage for images and playback
- **Battery Life:** More than 4 working hours
- **Durability:** Drop-resistant soft rubber body

3. SETUP

3.1 Unpacking and Initial Inspection

Carefully unpack all components from the carrying case. Verify that all items listed in the packing list are present and undamaged. If any items are missing or damaged, contact customer support immediately.



3.5MHz Convex Probe

Figure 3.1: DAWEI S1 package contents including the main unit, convex probe, charger, power cable, and carrying strap.

3.2 Charging the Device

Before first use, fully charge the device. Connect the charger to the charging port on the S1 unit and plug it into a power outlet. The charging indicator will show the charging status. A full charge typically provides over 4 hours of continuous operation.

3.3 Attaching the Probe

Gently align the probe connector with the probe interface on the S1 unit. Push firmly until it clicks into place. Ensure the connection is secure to prevent signal loss during operation. The S1 supports various probes, including convex, micro-convex, linear, and rectal probes, though the S1+ConvexProbe variant includes the convex probe as standard.



Figure 3.2: Various probes compatible with the S1 unit.

3.4 Attaching the Carrying Strap

For extended use or mobility, attach the adjustable carrying strap to the designated points on the S1 unit. Adjust the strap length for comfortable and secure carrying, distributing the weight effectively.



Figure 3.3: Components of the adjustable carrying strap.



Figure 3.4: User operating the S1 with the carrying strap.

4. OPERATING INSTRUCTIONS

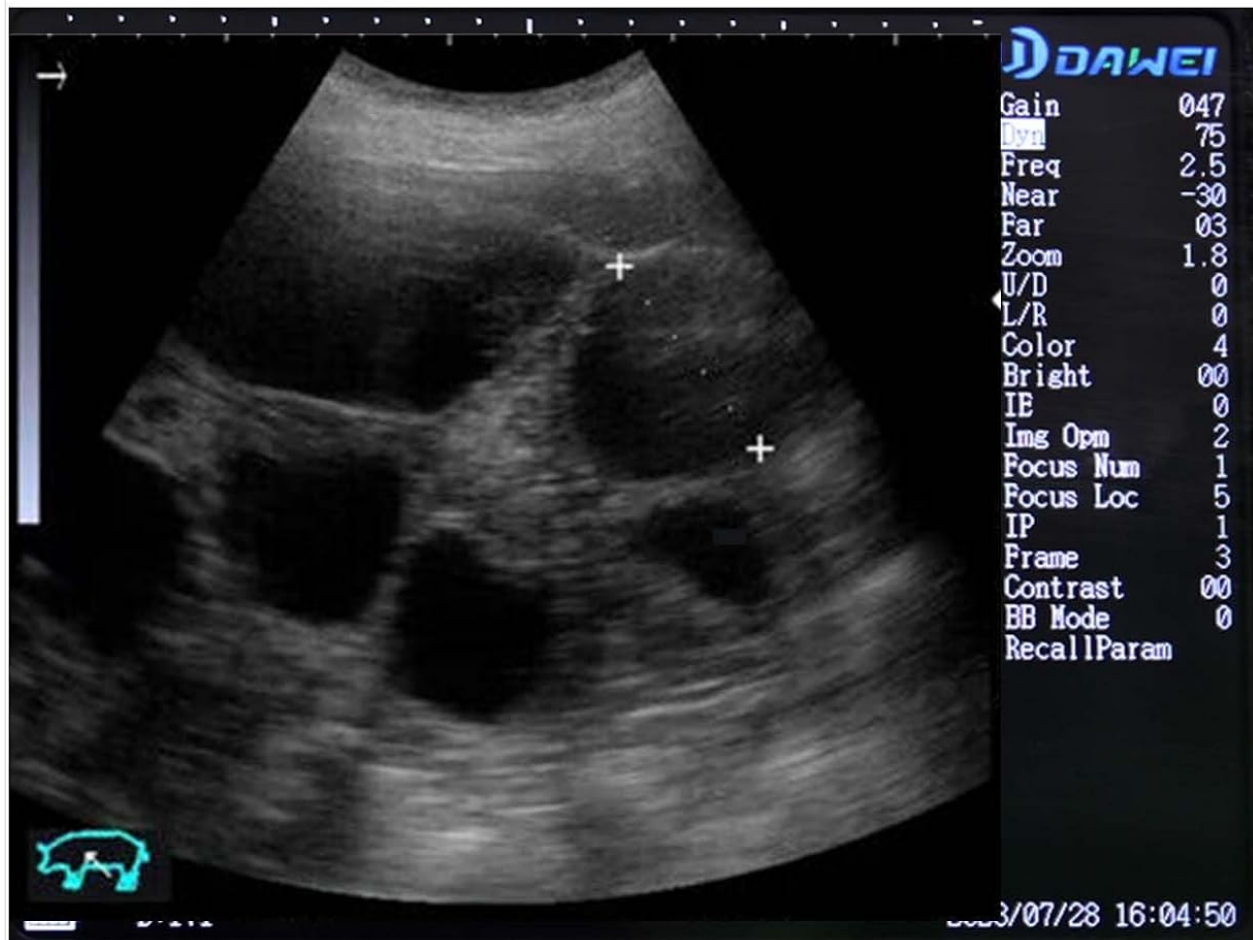
4.1 Powering On/Off

To power on the device, press and hold the **Power** button located on the control panel until the screen illuminates. To power off, press and hold the **Power** button again until the device shuts down.

4.2 Navigating the Interface

The S1 features a simple and intuitive interface. Use the directional buttons (**Up, Down, Left, Right**) to navigate through menus and adjust settings. Press the **OK** button to confirm selections. The **Exit** button returns to the previous screen or main menu.

Simple interface and rich functions



24 Pseudo-colors

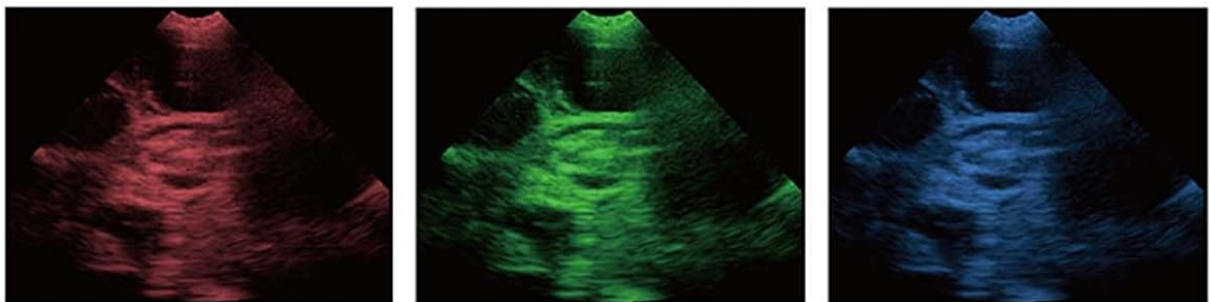


Figure 4.1: Example of the ultrasound display interface with various parameters.

4.3 Selecting Display Modes

The S1 offers five display modes: B, BB, 4B, BM, and M. These modes can be selected via the main menu or dedicated buttons (if available) to suit different diagnostic needs. The B-mode is commonly used for general imaging and pregnancy diagnosis.

4.4 Adjusting Image Settings

Use the **Setup** button to access image settings such as gain, frequency, depth, and focus. Adjust these parameters to optimize image quality for the specific animal and examination area. The electronic focus and adjustable frequency range of the convex probe (2.5MHz - 5.0MHz) allow for precise imaging.

4.5 Performing Measurements

The S1 includes measurement functions for distance, perimeter, area, and obstetrics. Press the **Meas** button to activate the measurement tools. Follow the on-screen prompts to perform measurements. The device supports specific measurement packages for various animals:

- **Swine:** Gestational sac diameter (GSD), Crown-rump length (CRL), Thoracic Diameter (TD), Backfat Thickness & Lean Meat Percentage
- **Ovine:** Crown-rump length (CRL), Thoracic Diameter (TD)
- **Canine:** Head circumference (HD), Crown-rump length (CRL), Gestational sac diameter (GSD), Biparietal Diameter (BD)
- **Feline:** Head circumference (HD), Biparietal Diameter (BD)
- **Bovine:** Thoracic Diameter (TD), Crown-rump length (CRL), Biparietal diameter (BPD)
- **Equine:** Biparietal diameter (BPD), Crown-rump length (CRL), Gestational sac diameter (GSD)

4.6 Saving and Reviewing Images

Press the **Save** button to store current images. The S1 has 32GB of permanent storage. Use the **Review** button to access saved images and playback. The device supports 255 frames movie playback, including continuous playback or frame-by-frame view.

5. MAINTENANCE

5.1 Cleaning the Device and Probe

After each use, clean the probe and the main unit. Use a soft cloth dampened with a mild disinfectant solution. Avoid harsh chemicals or abrasive materials that could damage the screen or casing. Ensure no liquid enters the device ports.

5.2 Battery Care

To prolong battery life, avoid fully discharging the battery frequently. Store the device in a cool, dry place when not in use. If storing for an extended period, ensure the battery is partially charged (around 50%).

5.3 Storage

Store the DAWEI S1 and its accessories in the provided carrying case to protect them from dust, moisture, and physical damage. Avoid extreme temperatures.

6. TROUBLESHOOTING

This section addresses common issues you might encounter with your DAWEI S1 unit. For problems not listed here, please contact customer support.

Problem	Possible Cause	Solution
Device does not power on	Low battery; Power button not pressed correctly	Charge the device; Press and hold the Power button for 3-5 seconds
No image on screen	Probe not connected; Incorrect mode selected; Gain too low	Ensure probe is securely connected; Select appropriate display mode; Increase gain settings

Problem	Possible Cause	Solution
Poor image quality	Incorrect frequency/depth; Insufficient coupling gel; Dirty probe surface	Adjust frequency and depth settings; Apply adequate coupling gel; Clean probe surface thoroughly
Device freezes or becomes unresponsive	Software glitch; Overheating	Restart the device; Allow device to cool down if warm

7. SPECIFICATIONS

Feature	Specification
Model	DAWEI S1
Display	5.6-inch LED HD Display
Device Weight	Approx. 950g (2.1 lbs)
Probe Type (Standard)	Convex Probe
Probe Frequency	2.5MHz - 5.0MHz
Display Modes	B, BB, 4B, BM, M
Focus	Electronic Focus, Frequency Adjustable
Internal Storage	32GB (permanent storage)
Battery Type	1 Lithium Ion battery (included)
Battery Life	More than 4 working hours
Target Audience	Cattle, Pigs, Goats, Horses, Sheep, Cats, Dogs
Package Dimensions	20.5 x 14.25 x 6.75 inches
Package Weight	9.4 pounds

8. WARRANTY AND SUPPORT

8.1 Warranty Information

The DAWEI S1 Veterinary Ultrasound Machine comes with a **2-year warranty** from the date of purchase. This warranty covers manufacturing defects and malfunctions under normal use. Please retain your proof of purchase for warranty claims.

8.2 Customer Support

DAWEI is committed to providing professional after-sales service and product training. If you have any questions about your product, require technical assistance, or need to initiate a warranty claim, please contact DAWEI customer support. Contact information can typically be found on the manufacturer's website or included documentation.

© 2026 DAWEI. All rights reserved.