

[Manuals.plus](#) /

> [TOSHIBA](#) /

> Toshiba Dishwasher DW-15F3ME(BS) User Manual

TOSHIBA DW-15F3ME(BS)

Toshiba Dishwasher DW-15F3ME(BS) User Manual

Model: DW-15F3ME(BS)

1. INTRODUCTION

Thank you for choosing the Toshiba DW-15F3ME(BS) Dishwasher. This manual provides essential information for the safe and efficient operation, installation, and maintenance of your appliance. Please read it thoroughly before using the dishwasher and keep it for future reference.

The Toshiba DW-15F3ME(BS) is designed for household use, offering 15 place settings, an Origin Inverter motor for efficient and quiet operation, an Infinity Plus 3-layer basket system, 8 wash programs, and 4 special functions, including automatic door opening for enhanced drying.

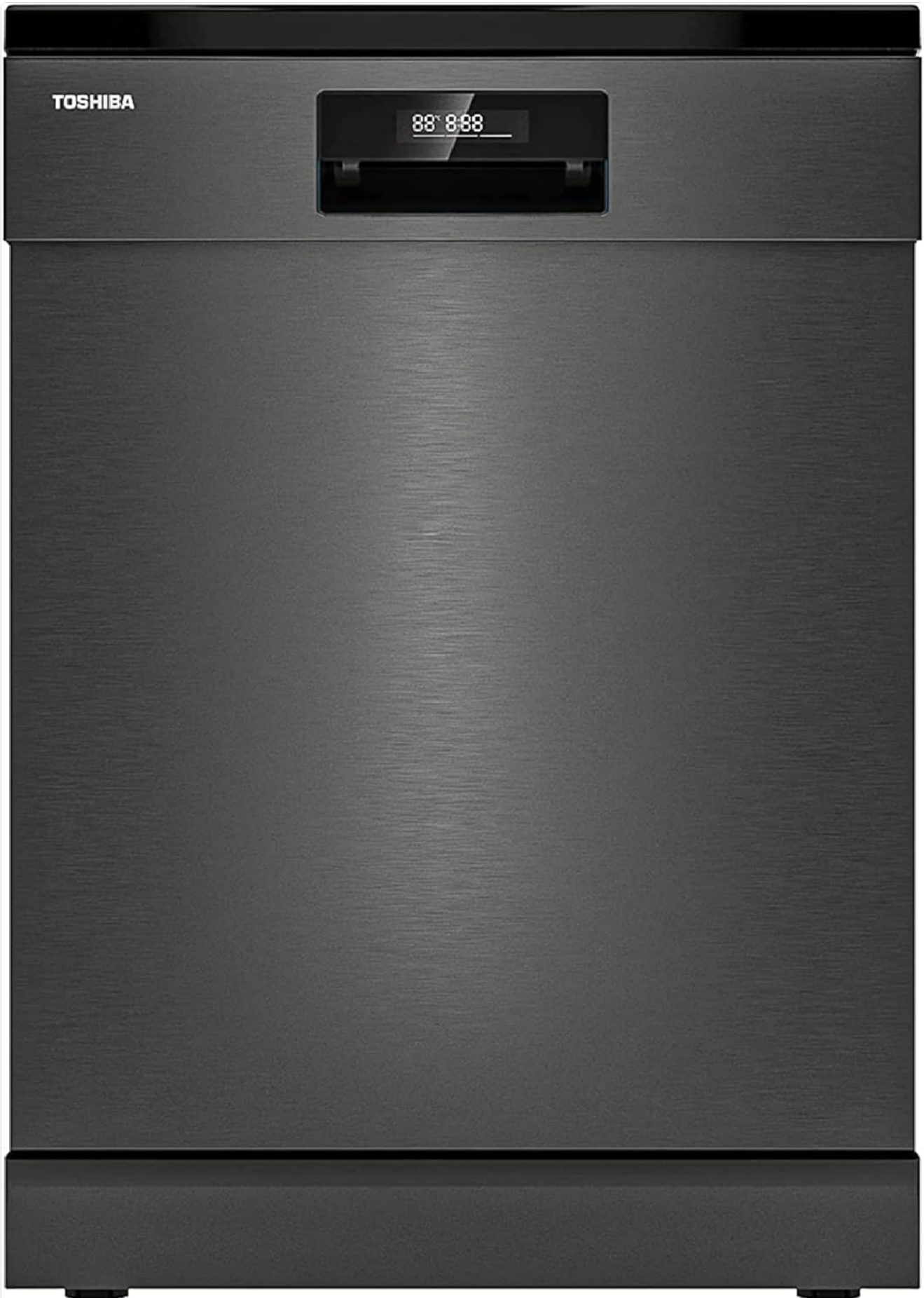


Figure 1.1: Front view of the Toshiba DW-15F3ME(BS) Dishwasher. This image displays the sleek, dark grey finish and the integrated control panel with a digital display.

2. SAFETY INFORMATION

Always follow basic safety precautions when using electrical appliances to reduce the risk of fire, electric shock, or injury to persons.

2.1 General Safety

- Read all instructions before using the dishwasher.
- This appliance is intended for domestic use only.
- Do not operate the dishwasher if it is damaged or malfunctioning. Contact authorized service personnel.
- Keep children away from the dishwasher, especially when it is operating. The Child Lock function should be activated.
- Do not allow children to play with the appliance.
- Sharp items should be loaded with points down to prevent injury.
- Do not touch the heating element during or immediately after use.

2.2 Electrical Safety

- Ensure the power supply voltage matches the rating label on the appliance.
- The dishwasher must be properly grounded.
- Do not use extension cords or adapter plugs with this appliance.
- Unplug the dishwasher before cleaning or performing any maintenance.

2.3 Water Safety

- Ensure water inlet and outlet hoses are securely connected to prevent leaks.
- The water leak protection system detects and cuts off water leakage.
- Do not use hot water above 60°C (140°F) for the water supply.

3. SETUP AND INSTALLATION

Proper installation is crucial for the performance and longevity of your dishwasher. It is recommended that installation be performed by a qualified technician.

3.1 Unpacking

1. Carefully remove all packaging materials from the dishwasher.
2. Check for any shipping damage. If damage is found, do not install and contact your retailer.
3. Keep packaging materials out of reach of children.

3.2 Placement

- Place the dishwasher on a firm, level floor surface.
- Ensure there is adequate space around the appliance for ventilation and door opening.
- The dimensions of the appliance are approximately 60 x 59.8 x 84.5 cm (Width x Depth x Height).
- Avoid placing the dishwasher near heat sources or in direct sunlight.



Figure 3.1: Side view of the Toshiba DW-15F3ME(BS) Dishwasher. This view helps in assessing placement requirements and clearances.

3.3 Water Connection

- Connect the water inlet hose to a cold water tap with a 3/4-inch thread. Ensure the connection is tight to prevent leaks.
- Connect the drain hose to a suitable drain pipe or sink trap, ensuring it is properly secured and allows for free drainage.

3.4 Electrical Connection

- Connect the power cord to a grounded electrical outlet.

- The dishwasher operates on 240 Volts.

3.5 First Use Preparation

- **Adding Dishwasher Salt:** Fill the salt dispenser with dishwasher salt to soften hard water, preventing limescale buildup. Refer to the indicator on the control panel for salt levels.
- **Adding Rinse Aid:** Fill the rinse aid dispenser. Rinse aid helps with drying and prevents water spots. The rinse aid indicator will signal when a refill is needed.
- **Adding Detergent:** Add the appropriate amount of dishwasher detergent to the dispenser before each wash cycle.

4. OPERATING INSTRUCTIONS

This section guides you through the daily operation of your Toshiba dishwasher.

4.1 Control Panel Overview

The dishwasher features a dual display with sensor touch controls for easy operation. The inside display allows manual control, while the outside display shows wash status.



Figure 4.1: The dishwasher door slightly open, revealing the integrated control panel with digital display and touch buttons. This view also provides a glimpse into the upper basket.

4.2 Loading the Dishwasher

The Infinity Plus basket system offers various loading solutions for up to 15 place settings across 3 layers.

- Scrape off large food particles from dishes before loading.
- Place larger items in the lower basket and smaller, delicate items in the upper basket.
- Ensure items do not block the spray arms.
- Load cutlery into the dedicated cutlery basket or tray, points down for safety.
- The 3-layer basket system allows for flexible loading of various tableware, glassware, utensils, and cookware.

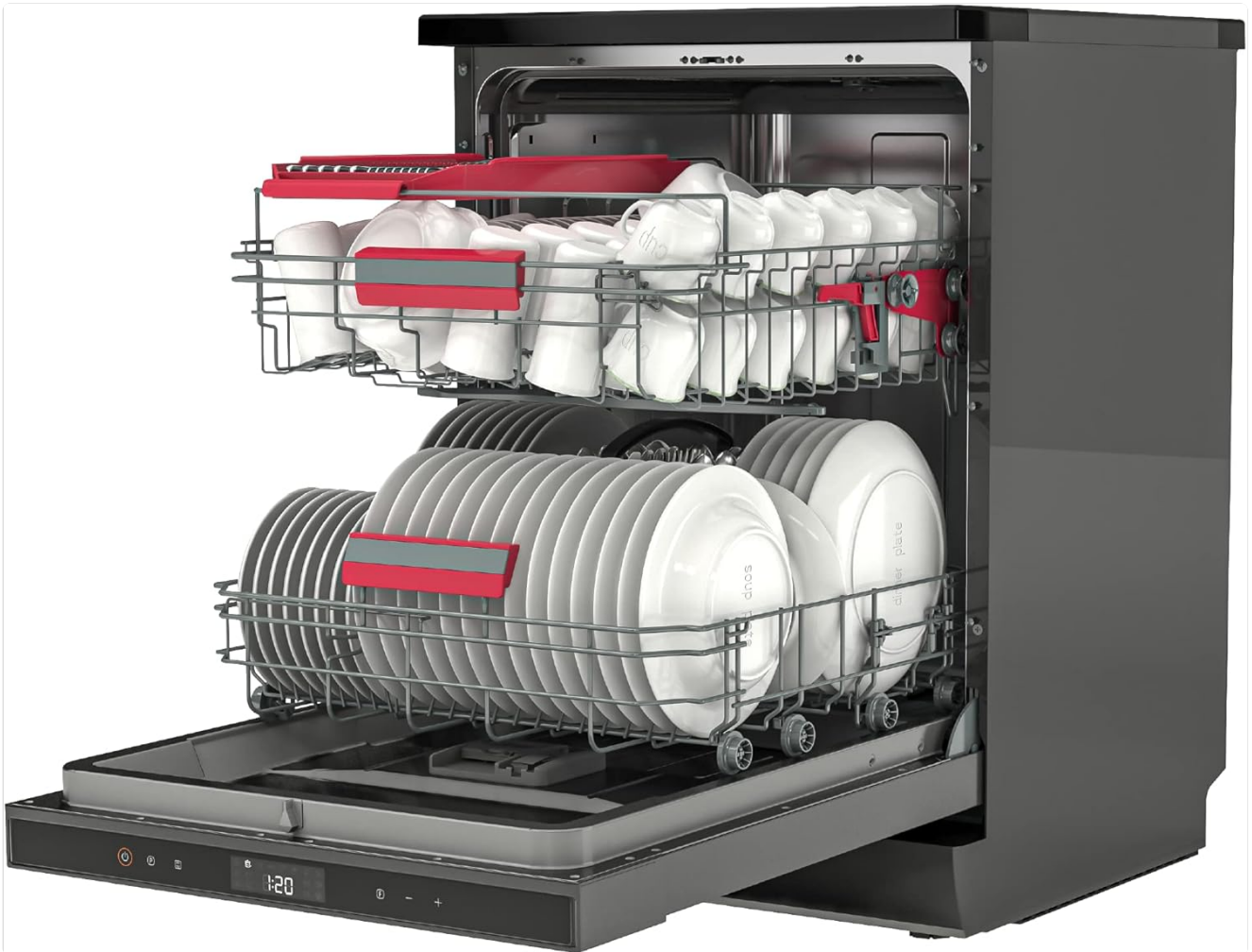


Figure 4.2: Interior view of the Toshiba DW-15F3ME(BS) Dishwasher, showcasing the three-layer basket system fully loaded with plates, cups, and cutlery, demonstrating its 15 place setting capacity.

4.3 Selecting a Program

Your dishwasher offers 8 wash programs to suit different soil levels and dish types:

- **Auto Wash:** Intelligently manipulates electricity and water consumption by detecting soil level.
- **Hi-temp Hygiene Cycle:** Highly effective for cleaning heavily soiled dishware and utensils, removing 99.99% of bacteria with temperatures up to 70°C.
- Other programs include options for normal, delicate, eco, quick wash, etc. (Refer to your specific program guide for details).

4.4 Special Functions

The dishwasher includes 4 functions to enhance washing and drying:

- **Turbo Speed Plus:** Reduces the wash cycle time by up to 50%.
- **Automatic Open Drying:** At the end of washing cycles, the door automatically opens slightly to allow air exchange, promoting optimal drying performance, even for plastic dishes.
- **Delayed Timer:** Precisely preset your delayed timer from 1 to 24 hours to start dishwashing automatically at a preferred time.
- **Child Lock:** Effectively protects children from unexpected accidents and prevents accidental operation.
- **Half Load Function:** Allows you to run dishwashing in only the upper or lower drawer, saving water and energy for smaller loads.

4.5 Starting a Wash Cycle

1. Load the dishwasher and add detergent, rinse aid, and salt as needed.
2. Close the dishwasher door securely.
3. Select the desired wash program using the control panel.
4. Select any desired special functions (e.g., Turbo Speed Plus, Delayed Start).
5. Press the Start button to begin the cycle.

5. MAINTENANCE AND CLEANING

Regular maintenance ensures optimal performance and extends the lifespan of your dishwasher.

5.1 Cleaning Filters

- The filter system should be cleaned regularly to prevent blockages and ensure effective washing.
- Twist and remove the coarse filter, fine filter, and main filter located at the bottom of the dishwasher tub.
- Rinse all filter components under running water to remove food particles.
- Reassemble the filters in reverse order, ensuring they are securely locked in place.

5.2 Cleaning Spray Arms

- Periodically check the spray arm nozzles for blockages.
- If any nozzles are blocked, remove the spray arms and clear the holes with a thin object like a toothpick.
- Rinse the spray arms thoroughly before reattaching them.

5.3 Exterior Cleaning

- Wipe the exterior surfaces of the dishwasher with a soft, damp cloth and mild detergent.
- Do not use abrasive cleaners or solvents.

5.4 Interior Cleaning

- Run a dishwasher cleaning cycle periodically using a specialized dishwasher cleaner.
- Wipe down the door seal with a damp cloth to remove any food residue.

6. TROUBLESHOOTING

Before contacting service, please check the following common issues and solutions:

Problem	Possible Cause	Solution
Dishwasher does not start	Power cord not plugged in; Door not closed properly; Fuse blown; Program not selected.	Check power connection; Ensure door is latched; Check household fuse/circuit breaker; Select a program and press Start.
Dishes not clean	Improper loading; Insufficient detergent; Clogged spray arms/filters; Incorrect program selected.	Reload dishes correctly; Add more detergent; Clean spray arms and filters; Select a more intensive program.
Water not draining	Clogged drain hose; Clogged filter system; Drain pump malfunction.	Check and clear drain hose; Clean filter system; Contact service if pump is faulty.
Water spots or streaks on dishes	Insufficient rinse aid; Hard water.	Refill rinse aid dispenser; Adjust rinse aid dosage; Ensure dishwasher salt is used.
Unusual noise	Items hitting spray arms; Foreign object in pump; Dishwasher not level.	Rearrange dishes; Check for foreign objects; Level the dishwasher.

7. SPECIFICATIONS

Technical details for the Toshiba DW-15F3ME(BS) Dishwasher:

Feature	Specification
Brand	TOSHIBA
Model Info	DW-15F3ME(BS)
Capacity	15 Place Settings
Optional Cycles	8 Programmes
Functions	4 Functions (e.g., Turbo Speed Plus, Auto Open Drying, Delayed Timer, Child Lock)
Special Features	Origin Inverter, Automatic Open Drying, Soil-Sensing Auto Wash, Dual Display with Sensor Touch, Water Leak Protection System
Noise Level	42 dB(A)
Product Dimensions (W x D x H)	60 x 59.8 x 84.5 cm
Item Weight	36 Kilograms
Material	Plastic (Interior components)
Voltage	240 Volts

8. WARRANTY AND SUPPORT

8.1 Product Warranty

The Toshiba DW-15F3ME(BS) Dishwasher comes with a **1-Year Warranty** from the date of purchase. This warranty covers manufacturing defects and faulty workmanship under normal domestic use. Please retain your proof of purchase for warranty claims.

The warranty does not cover damage caused by improper installation, misuse, neglect, unauthorized repairs, or normal wear and tear.

8.2 Customer Support

For technical assistance, service requests, or questions regarding your product, please contact Toshiba customer service. Refer to the contact information provided with your purchase documentation or visit the official Toshiba website for your region.