

Manuals+

[Q & A](#) | [Deep Search](#) | [Upload](#)

manuals.plus /

- › [XIANG XING LIGHTING](#) /
- › [XIANG XING LIGHTING Outdoor Wall Light Model 668SS Instruction Manual](#)

XIANG XING LIGHTING 668SS

XIANG XING LIGHTING Outdoor Wall Light Model 668SS Instruction Manual

Model: 668SS

1. INTRODUCTION

This manual provides detailed instructions for the safe installation, operation, and maintenance of your XIANG XING LIGHTING Model 668SS Outdoor Wall Light. Please read this manual thoroughly before installation and retain it for future reference.



Image 1.1: Two Model 668SS lights installed on an exterior brick wall, demonstrating their up and down illumination.

2. SAFETY INFORMATION

For your safety, ensure all electrical connections are made by a qualified electrician and comply with local electrical codes. Always turn off power at the circuit breaker before installation or maintenance.

- **ETL Listed:** This wall sconce is ETL listed, ensuring it meets recognized safety standards.
- **Waterproof and Anti-Rust:** Designed for outdoor use, this fixture is waterproof and resistant to rust, suitable for various weather conditions.
- **Weather Resistant:** The product is built to withstand outdoor elements, providing reliable performance in diverse environments.



Image 2.1: Visual representation of the product's safety and durability features.

3. PRODUCT FEATURES

The Model 668SS Outdoor Wall Light combines modern aesthetics with durable construction, providing effective illumination for outdoor spaces.

- **Unique Modern Design:** Features a cylindrical shape with up-and-down illumination, creating a distinct lighting effect.
- **Durable Construction:** Made from high-quality stainless steel and sealed with toughened glass at the top and bottom for enhanced durability and corrosion resistance.
- **Versatile Application:** Suitable for various outdoor lighting decorations, including porches, patios, yards, balconies, stairs, and entryways.



Made of high quality stainless steel and corrosion resistant

Sealed with toughened glass at the top and bottom. Strong and durable.

Unique design of up & down illumination, creates a warm and cozy atmosphere to your house.

Image 3.1: Key design and material features of the wall light.

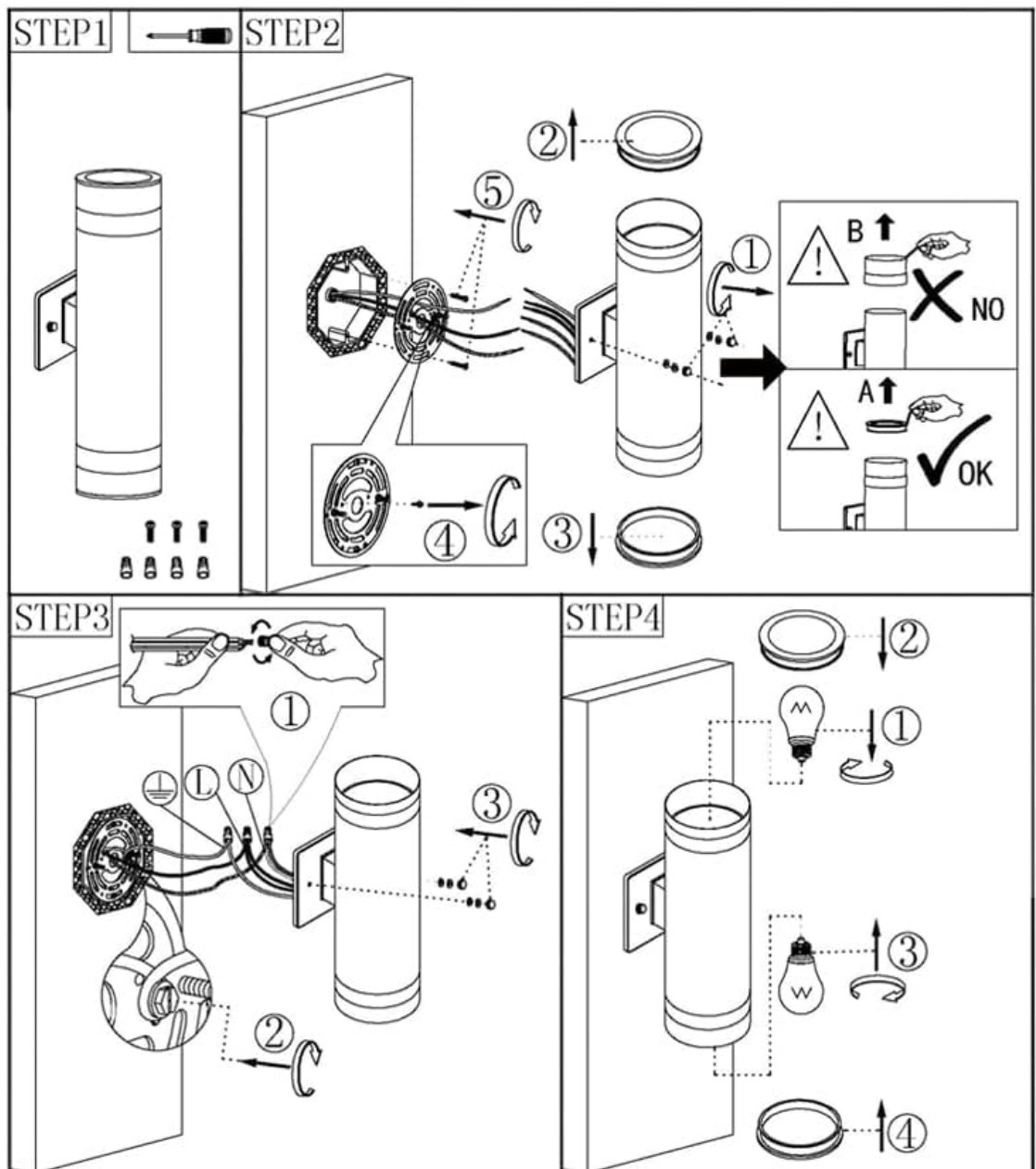
4. SPECIFICATIONS

| | |
|---------------------------|----------------------------------|
| Brand | XIANG XING LIGHTING |
| Model Number | 668SS |
| Material | Stainless Steel, Toughened Glass |
| Finish Type | Polished |
| Product Dimensions | 5.43"L x 4.37"W x 14"H |
| Item Weight | 7.76 pounds |
| Voltage | 120 Volts |

| | |
|---------------------------------|-----------------|
| Bulb Base | E26 Medium Base |
| Max Wattage (per socket) | 20 Watts |
| Number of Light Sources | 2 |
| Indoor/Outdoor Usage | Outdoor |
| Special Feature | Waterproof |



Installation Instruction



For detailed instruction, please download Installation Manual.

Image 4.1: Dimensional drawing of the Model 668SS wall light.

5. PACKAGE CONTENTS

Ensure all components are present before beginning installation.

- Outdoor Wall Light Fixture (2 units)
- Mounting Hardware (screws, wire nuts, mounting bracket)
- Instruction Manual (this document)

Note: Bulbs are **not** included and must be purchased separately.

6. INSTALLATION GUIDE

Follow these steps carefully for proper installation. If you are unsure about any step, consult a qualified electrician.

1. **Step 1: Prepare for Installation.** Turn off power at the main circuit breaker. Ensure the mounting surface is clean and secure.
2. **Step 2: Attach Mounting Bracket.** Secure the mounting bracket to the junction box using the provided screws. Ensure the bracket is level and firmly attached.
3. **Step 3: Wire Connections.** Connect the fixture's wires to the house wiring: black to black (live), white to white (neutral), and green/bare copper to green/bare copper (ground). Use wire nuts to secure connections. Ensure all connections are tight and properly insulated.
4. **Step 4: Mount the Fixture.** Carefully align the fixture with the mounting bracket and secure it using the provided screws. Ensure the fixture is flush against the wall and stable.
5. **Step 5: Install Bulbs.** Insert the appropriate E26 base bulbs into the sockets.
6. **Step 6: Restore Power.** Turn the power back on at the circuit breaker and test the light fixture.

Abundant Products

Wall light, wall sconce, yard lamp, street light, etc, more than 350 series of over 1200 different models, with modern, classic, elegant style, made of Die-Cast Aluminum, stainless steel, hot-galvanize, cooper, etc.

Independent R&D

We insist on original design and keep investing in research and development. With strict and advanced testing like Rohs testing, IP testing, salt-spray rust resistance testing, electric shock risk testing, we devote to provide safe, energy-saving and environmental products.



ISO9001 Certified Manufacturer

We have a factory of 50,000 square meter area and more than 500 employee, with 10 production line and workshop, including moulding, die-casting, punching, polishing, painting, assembling. Our factory is ISO9001 and SA8000 certified.

Worry-free Customer Service

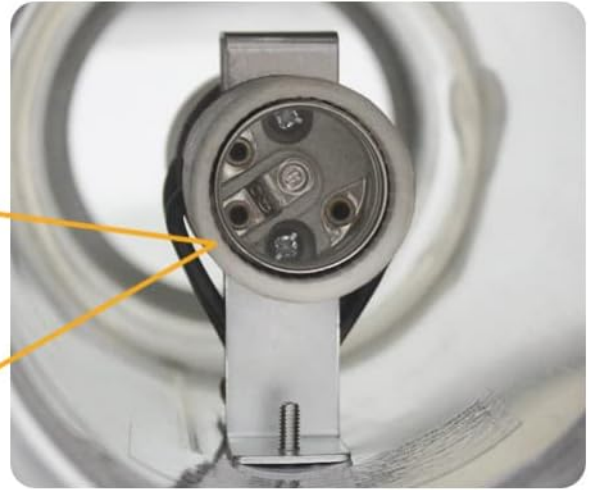
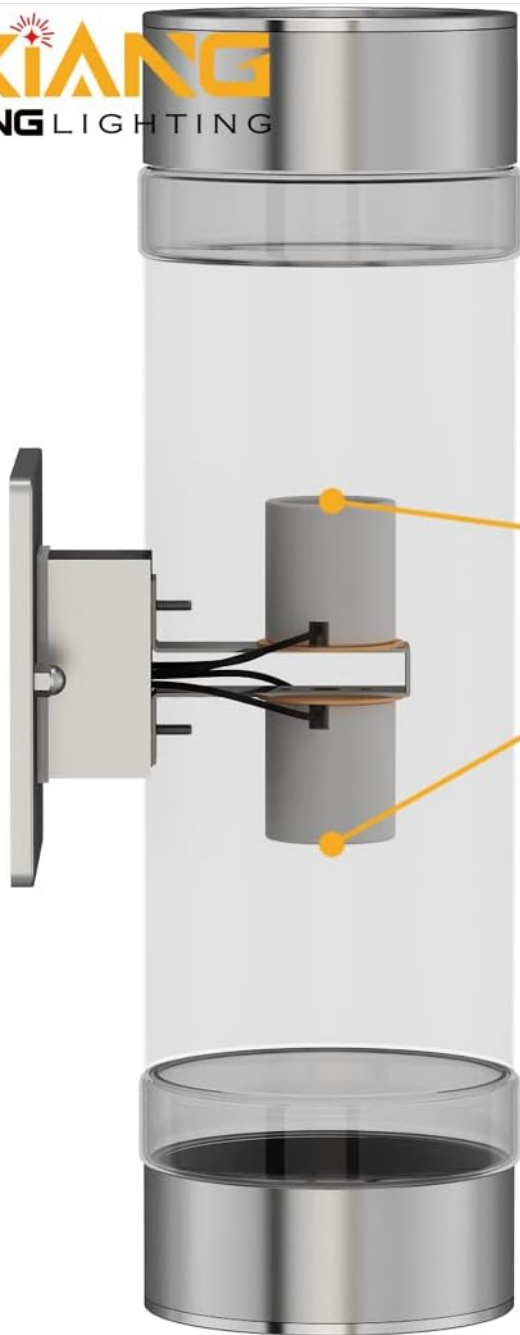
At least 3-year warrant and lifetime technical support are provided for all products. We promise to respond to your inquiry with 24 hours in workdays.

Image 6.1: Illustrated guide for the installation process.

7. BULB REQUIREMENTS & OPERATION

This fixture requires two E26 medium base bulbs (not included).

- **Bulb Type:** Compatible with Incandescent, LED, CFL, and Halogen bulbs.
- **Maximum Wattage:** Do not exceed 20 Watts per socket.
- **Operation:** Once installed and bulbs are inserted, the light operates via your existing wall switch.



Standard E26 Screw Socket

E26 medium base socket, 2 x 20 Watt max.
Compatible with a variety of Incandescent, LED, CFL and halogen bulbs.



CFL ✓



Halogen ✓



Incandescent ✓



LED ✓

*Bulbs are not included.

Image 7.1: Details of the E26 socket and compatible bulb types.

8. MAINTENANCE

Regular maintenance ensures the longevity and optimal performance of your outdoor wall light.

- **Cleaning:** Periodically wipe the fixture with a soft, damp cloth to remove dirt and debris. Avoid abrasive cleaners or solvents that may damage the finish or glass.
- **Inspection:** Annually inspect the wiring and connections for any signs of wear or damage. Ensure all screws and mounting hardware remain tight.
- **Bulb Replacement:** Turn off power before replacing bulbs. Allow bulbs to cool completely before handling.

9. TROUBLESHOOTING

If you encounter issues with your wall light, refer to the following common troubleshooting steps:

- **Light Does Not Turn On:**

- Check if the power switch is in the 'ON' position.
- Verify the circuit breaker has not tripped.
- Ensure bulbs are correctly installed and not burnt out.
- Check wire connections for looseness (ensure power is off before checking).

- **Light Flickers:**

- Ensure bulbs are fully screwed into the sockets.
- Check for loose wire connections.
- Confirm bulbs are compatible with the fixture and not exceeding maximum wattage.

- **Water Inside Fixture:**

- While the fixture is waterproof, ensure it was installed correctly and sealed flush against the mounting surface.
- Inspect for any visible cracks or damage to the glass or seals.

If problems persist after following these steps, please contact customer support.

10. WARRANTY AND SUPPORT

XIANG XING LIGHTING is committed to providing quality products and customer satisfaction.

- **Warranty:** This product comes with at least a 3-year warranty.
- **Technical Support:** Lifetime technical support is provided for all products.
- **Contact:** For inquiries or support, please contact XIANG XING LIGHTING customer service. We aim to respond within 24 hours on weekdays.

© 2023 XIANG XING LIGHTING. All rights reserved.

For more information, visit the [XIANG XING LIGHTING Store](#).