

## CAMECHO K0202UK-Monitor

# CAMECHO 11.6-inch Portable Monitor User Manual

Model: K0202UK-Monitor

## 1. INTRODUCTION

Thank you for choosing the CAMECHO 11.6-inch Portable Monitor. This manual provides essential information for the proper setup, operation, and maintenance of your device. Please read it thoroughly before use to ensure optimal performance and longevity.

This monitor features a Full HD 1920x1080 display, built-in dual speakers, and versatile connectivity options including HDMI, VGA, AV, BNC, and USB. It is designed for a wide range of applications, from PC and gaming to CCTV surveillance and vehicle systems.



*Image 1.1: CAMECHO 11.6-inch Portable Monitor with included remote control.*

## 2. PACKAGE CONTENTS

Please check the package for the following items:

- 1 x CAMECHO 11.6-inch Portable Monitor
- 1 x EU Plug Power Cable
- 1 x HDMI Cable
- 1 x VGA Cable
- 1 x AV Cable
- 1 x BNC Cable
- 1 x Power Adapter
- 1 x Remote Control
- 1 x Mounting Bracket
- 1 x Base Stand
- 1 x Keyboard

### 3. PRODUCT FEATURES

- **Display:** 11.6-inch IPS screen with Full HD 1920x1080 resolution.
- **Aspect Ratio:** 16:9 for wide-screen viewing.
- **Connectivity:** Multiple input ports including HDMI, VGA, AV, BNC, and USB.
- **Audio:** Integrated dual speakers for clear sound output.
- **Power Compatibility:** Supports DC12V-24V power input, suitable for various vehicle types.
- **Versatility:** Ideal for PC, DVD, TV, CCTV surveillance, and vehicle backup camera systems.
- **Display Modes:** Supports copy mode, extend mode, and only mode for flexible use with computers.

## Built-in Dual Speakers

Sound channel: HDMI/AV/USB Signal mode



Image 3.1: Rear view of the monitor highlighting the built-in dual speakers.

### 4. SETUP AND INSTALLATION

#### 4.1 Assembling the Stand

1. Attach the mounting bracket to the back of the monitor.
2. Secure the base stand to the mounting bracket.
3. Ensure all connections are tight and stable.

# Installation method



Image 4.1: Visual guide for assembling the monitor stand.

## 4.2 Connecting to Devices

The monitor offers various input ports. Identify the correct port for your device:

- **HDMI:** For high-definition digital video and audio from devices like PCs, game consoles (e.g., Switch), or Raspberry Pi.
- **VGA:** For analog video input from PCs or laptops.
- **AV:** For analog video and audio input from devices like DVRs or older video equipment.
- **BNC:** Primarily for security cameras (CCTV systems).
- **USB:** For connecting USB drives or card readers to display media.
- **DC IN:** Connect the provided power adapter here. The monitor supports 12V-24V power input.





Image 4.2: Overview of monitor ports and their typical connections.

### 4.3 Powering On

After connecting all necessary cables, press the power button located on the monitor or use the remote control to turn on the device.

## 5. OPERATING INSTRUCTIONS

### 5.1 Input Source Selection

Use the 'MODE' button on the monitor or the remote control to cycle through available input sources (HDMI, VGA, AV, BNC, USB) until your desired source is displayed.

### 5.2 Menu Navigation

Use the 'MENU' button to access the on-screen display (OSD) menu. Navigate through options using the 'Increase' and 'Reduce' buttons. Press 'MENU' again to confirm selections or exit the menu.

### 5.3 Display Modes (for PC connection)

When connected to a computer, the monitor supports various display modes:

- **Copy Mode:** Duplicates your computer's display on the monitor.
- **Extend Mode:** Extends your computer's desktop, allowing for more screen space.
- **Only Mode:** Displays content only on the portable monitor, turning off the computer's primary display.



*Image 5.1: Examples of display modes with a laptop connection.*

## 5.4 Applications

The CAMECHO 11.6-inch monitor is suitable for a variety of uses:

- **Business:** Use as a secondary display for meetings or presentations.
- **Entertainment:** Connect to gaming consoles or media players for movies and games.
- **Surveillance:** Integrate with CCTV systems for monitoring security feeds.
- **Vehicle Systems:** Compatible with 12-24V systems for use in trucks, buses, or cars.



Image 5.2: Various application scenarios for the portable monitor.



# Support 12-24v model

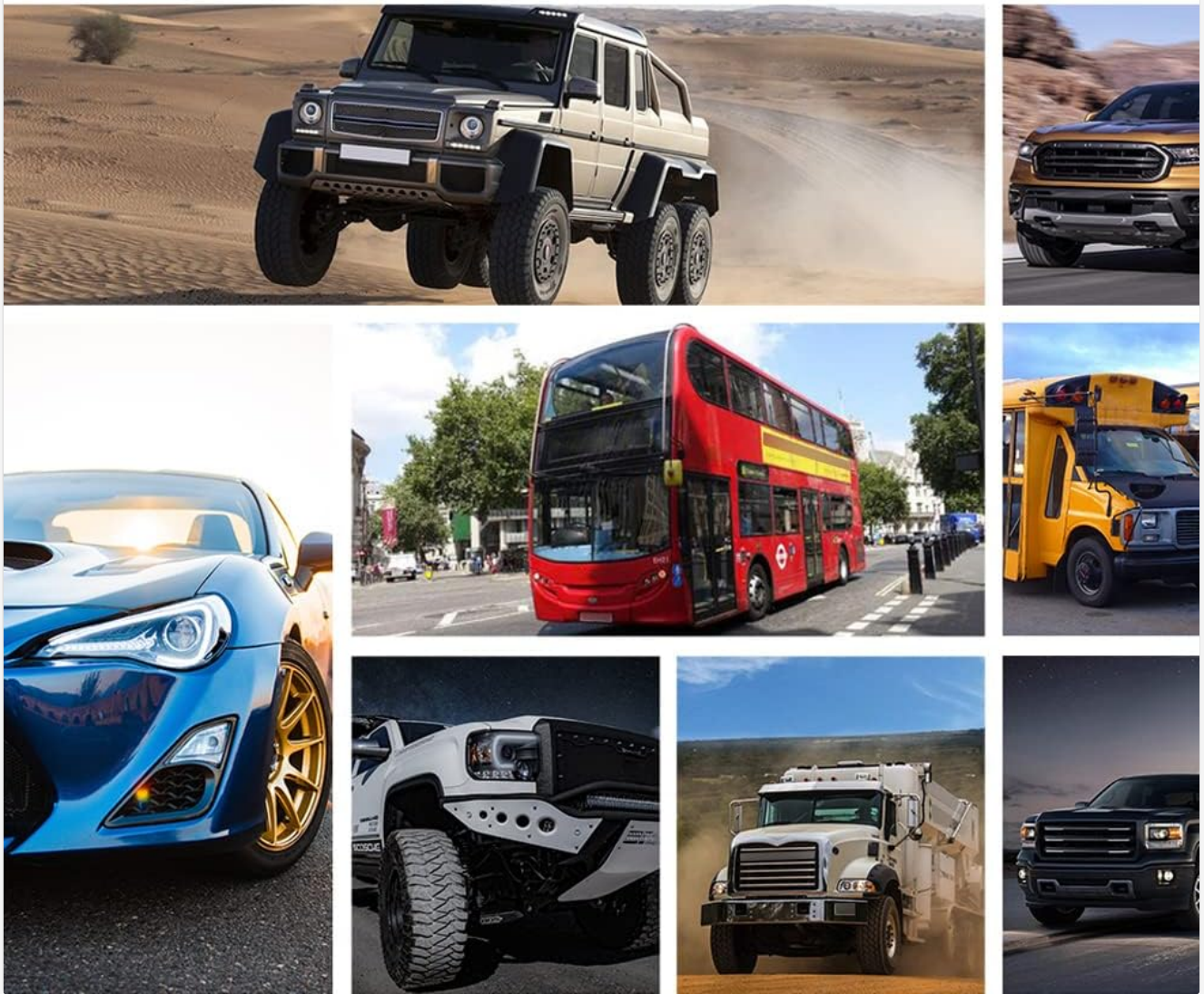


Image 5.3: The monitor supports 12-24V power, making it suitable for a range of vehicles.

## 6. MAINTENANCE

### 6.1 Cleaning the Screen

To clean the screen, gently wipe it with a soft, lint-free cloth. For stubborn marks, slightly dampen the cloth with water or a screen-safe cleaning solution. Avoid using harsh chemicals, abrasive materials, or spraying liquid directly onto the screen.

### 6.2 General Care

- Keep the monitor away from direct sunlight, excessive heat, and moisture.
- Avoid placing heavy objects on the monitor.
- Do not block the ventilation openings on the back of the monitor.
- Disconnect the power adapter during thunderstorms or when not in use for extended periods.

## 7. TROUBLESHOOTING



Problem	Possible Cause	Solution
No image on screen	No power; Incorrect input source; Loose cable connection	Check power adapter connection; Select correct input source; Ensure video cables are securely connected.
No sound	Volume too low; Muted; Incorrect audio source; Cable issue	Increase volume; Unmute; Ensure audio is enabled on the source device; Check audio cable (if applicable).
Image flickering or distorted	Loose cable; Interference; Resolution mismatch	Check video cable connections; Move away from other electronic devices; Adjust resolution on source device to 1920x1080.
Remote control not working	Dead batteries; Obstruction; Out of range	Replace batteries; Remove obstructions between remote and monitor; Ensure you are within range and pointing correctly.

## 8. SPECIFICATIONS

**Brand:** CAMECHO

**Model:** K0202UK-Monitor

**Screen Size:** 11.6 inches

**Panel Type:** IPS

**Resolution:** 1920x1080 (Full HD)

**Aspect Ratio:** 16:9

**Brightness:** 355 cd/m²

**Contrast Ratio:** 2536:1

**Response Time:** 3 milliseconds

**Refresh Rate:** 60 Hz

**Video Interfaces:** HDMI, VGA, AV, BNC, USB

**Audio:** Built-in Dual Speakers, Headphone Output

**Power Input:** DC12V-24V

**Power Consumption:** 6W

**Color:** FULLCOLOR

**Screen Surface:** Matte

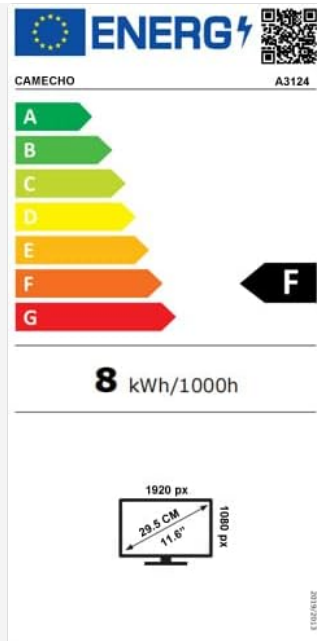


Image 8.1: Energy efficiency label for the CAMECHO monitor.

## 9. WARRANTY AND SUPPORT

### 9.1 Warranty Information

This CAMECHO monitor comes with a **1-year manufacturer's warranty**. This warranty covers defects in materials and workmanship under normal use. Please retain your proof of purchase for warranty claims.

### 9.2 Customer Support

For any questions, technical assistance, or warranty inquiries, please contact CAMECHO customer support. We aim to respond to all online inquiries within 24 hours.

**Email:** [CAMECHOVIP@126.com](mailto:CAMECHOVIP@126.com)