

CZUR Lens 1200 Pro

CZUR Lens 1200 Pro Document Scanner User Manual

Model: Lens 1200 Pro

1. INTRODUCTION

This manual provides detailed instructions for the installation, operation, and maintenance of your CZUR Lens 1200 Pro Document Scanner. Please read this manual thoroughly before using the device to ensure proper functionality and to prevent damage.

2. PRODUCT OVERVIEW

2.1 Package Contents

- CZUR Lens 1200 Pro Document Scanner Unit
- USB Cable
- Soft Mat
- Software CD (or download link)
- User Manual (this document)

2.2 Device Components

The CZUR Lens 1200 Pro features a high-resolution 12-megapixel camera, an integrated microphone, an LED light for illumination, and a power switch for the LED light. Its foldable design makes it portable.

Caméra CMOS HD

- Caméra **12 MP**
- Résolution **4032×3024**
- **330** DPI



Figure 1: CZUR Lens 1200 Pro Scanner Components. This image highlights the 12 MP CMOS camera, integrated microphone, LED light, and the LED light switch on the scanner unit.

Détails du Produit

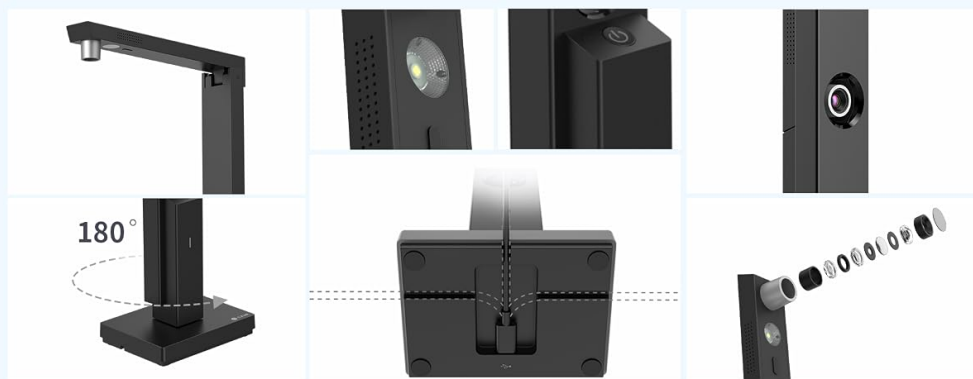


Figure 2: Product Details. Close-up views of the scanner's foldable arm, LED light, power button, camera lens, and internal structure.

3. SETUP

1. **Unpack the Scanner:** Carefully remove all components from the packaging.
2. **Position the Mat:** Place the soft mat on a flat, stable surface.
3. **Set up the Scanner:** Unfold the scanner unit and place its base into the designated notch on the soft mat. Ensure the scanner is stable.
4. **Connect USB:** Connect the scanner to your computer using the provided USB cable. The computer should automatically detect the device and install necessary drivers.
5. **Install Software:** Insert the software CD into your computer's drive or download the latest software from the official CZUR website. Follow the on-screen instructions to complete the installation. You may need the serial number located under the scanner for activation.

4. OPERATING INSTRUCTIONS

4.1 Basic Scanning Procedure

1. **Place Document:** Position the document or item you wish to scan on the soft mat, ensuring it is within the scanning area.

2. **Launch Software:** Open the CZUR scanning software on your computer.
3. **Adjust Lighting:** If the ambient light is insufficient, turn on the scanner's LED light using its dedicated switch.
4. **Initiate Scan:** Click the "Scan" button within the software interface. The scanner will automatically focus and capture the image.
5. **Review and Save:** Review the scanned image in the software. You can then save it in various formats such as JPG, PDF, or TIFF.

4.2 Important Considerations

- Avoid scanning glossy materials (e.g., glossy photos, magazines) as they may cause glare.
- Curved pages are not recommended for optimal scan quality.
- Ensure the document is flat and properly aligned on the mat.

5. SOFTWARE FEATURES

The CZUR software offers several features to enhance your scanning experience:

5.1 Image Processing

- **Color Modes:** Select different color modes based on the material being scanned.
- **Auto Alignment:** Automatically corrects skewed pages.
- **Background Cleaning:** Removes unwanted background elements.
- **Edge Cropping:** Automatically crops to the document's edges.
- **Multi-Object Scan:** Scan multiple small documents simultaneously.
- **Two-Sided Combination:** Combine two sides of a document into a single file.

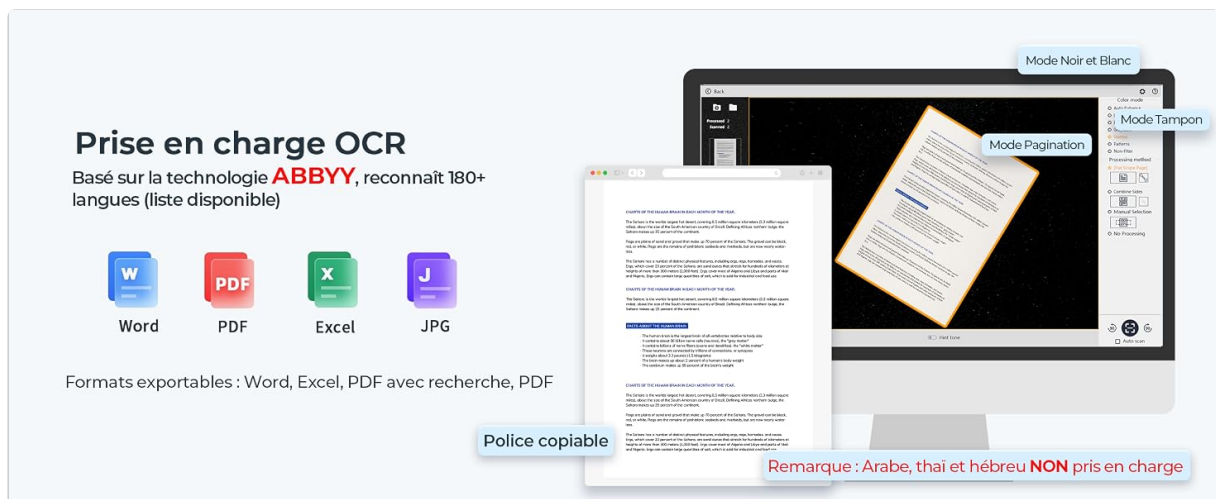


Figure 3: Intelligent Software Features. This image illustrates the software's capabilities for image processing and optimization, including before and after examples of scanned documents.

5.2 Optical Character Recognition (OCR)

The integrated OCR function allows you to convert scanned images into editable text formats. The CZUR Lens Pro supports over 180 languages for OCR.

- **Export Formats:** Export editable files to Word, Excel, or searchable PDF.
- **Image Formats:** Save scanned documents as JPG, PDF, or TIFF.
- **Note:** Thai, Arabic, and Hebrew languages are not supported by the OCR function.

Logiciel intelligent, scan plus rapide

Modes de couleur, redressement automatique, suppression des bords noirs, nettoyage de fond, multi-objets, fusion recto-verso, lecture QR, etc.



Figure 4: OCR Functionality. This image demonstrates the OCR feature, showing supported export formats and a list of languages recognized by the software.

6. USING AS VISUAL PRESENTER/WEBCAM

The CZUR Lens 1200 Pro can also function as a visual presenter or webcam. Simply adjust the scanner arm to the desired position. This feature is suitable for online teaching, meetings, and presentations, and is compatible with applications like Zoom, Skype, Google Meet, and Microsoft Teams.



Figure 5: Visual Presenter Mode. The scanner can be used to display documents or objects during online meetings or presentations.

7. MAINTENANCE

- **Cleaning:** Use a soft, dry cloth to clean the scanner's exterior. Do not use liquid cleaners or abrasive materials.
- **Lens Care:** Gently wipe the camera lens with a microfiber cloth designed for optics.
- **Storage:** When not in use, fold the scanner and store it in a dry, dust-free environment.
- **Software Updates:** Regularly check for software updates on the CZUR website to ensure optimal performance and access to new features.

8. TROUBLESHOOTING

Problem	Possible Cause	Solution
Scanner not recognized by computer	Loose USB connection, driver issue, faulty cable.	Ensure USB cable is securely connected. Try a different USB port or cable. Reinstall scanner drivers. Restart computer.
Poor scan quality (blurry, dark, glare)	Insufficient lighting, glossy material, curved document, dirty lens.	Turn on LED light. Avoid scanning glossy or curved materials. Clean the camera lens. Ensure document is flat.
Software crashes or freezes	Outdated software, system incompatibility, resource conflict.	Update software to the latest version. Ensure your operating system meets minimum requirements. Close other demanding applications.
OCR not working for certain languages	Language not supported by OCR.	Verify if the language is listed as supported by CZUR OCR. Thai, Arabic, and Hebrew are not supported.

9. SPECIFICATIONS

Feature	Detail
Scanner Type	Document Scanner
Brand	CZUR
Model Name	CZUR Lens Pro
Connectivity Technology	USB
Product Dimensions (L x W x H)	35 x 35 x 35 cm
Resolution	330 DPI
Color Depth	24-bit
Optical Sensor Technology	CMOS
Minimum System Requirements	Windows, macOS
Maximum Media Size	A4
Light Source Type	LED

10. WARRANTY AND SUPPORT

10.1 Warranty Information

The CZUR Lens 1200 Pro Document Scanner comes with a **1-year warranty** from the date of purchase. This warranty covers manufacturing defects and malfunctions under normal use. Please retain your proof of purchase for warranty claims.

10.2 Technical Support

For technical assistance, software updates, or any inquiries regarding your CZUR Lens 1200 Pro scanner, please visit the official CZUR website or contact their customer support. Regular software updates are available online to enhance functionality and address potential issues.

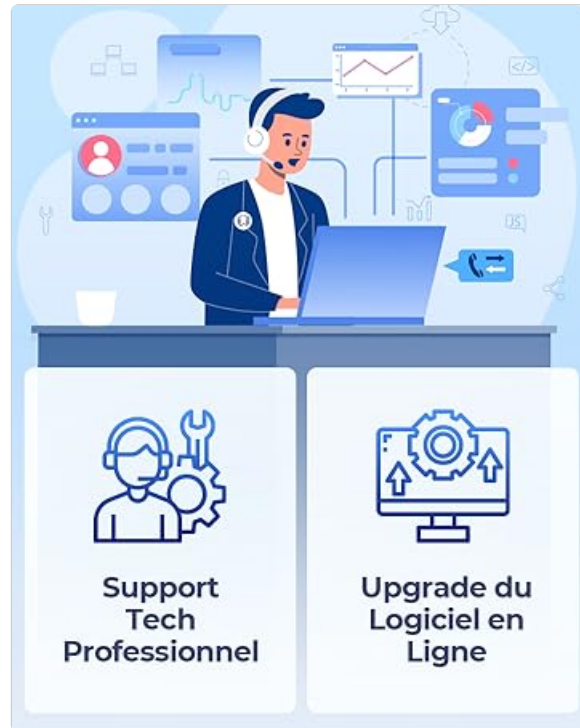


Figure 6: Technical Support and Software Upgrades. This image illustrates the availability of professional technical support and online software updates for the product.