

Skil DP9505-00

SKIL DP9505-00 6.2 Amp 10-Inch 5-Speed Benchtop Drill Press Instruction Manual

Model: DP9505-00

1. INTRODUCTION AND OVERVIEW

This manual provides essential information for the safe and effective operation, assembly, and maintenance of your SKIL DP9505-00 6.2 Amp 10-Inch 5-Speed Benchtop Drill Press. The SKIL DP9505-00 is designed for precise drilling in various materials, featuring a powerful induction motor, a laser alignment system, and adjustable controls for depth and table height.



Figure 1: SKIL DP9505-00 Benchtop Drill Press. This image shows the complete drill press unit, highlighting its compact benchtop design and key components.

2. SAFETY INFORMATION

WARNING: Read and understand all safety warnings and instructions before operating this power tool. Failure to follow the warnings and instructions may result in electric shock, fire, and/or serious injury.

General Power Tool Safety Warnings

- **Work Area Safety:** Keep the work area clean and well-lit. Cluttered or dark areas invite accidents. Do not operate power tools in explosive atmospheres, such as in the presence of flammable liquids, gases, or dust.
- **Electrical Safety:** Power tool plugs must match the outlet. Never modify the plug in any way. Do not abuse the cord. Never use the cord for carrying, pulling, or unplugging the power tool.
- **Personal Safety:** Always wear eye protection. Use safety glasses, goggles, or a face shield. Wear hearing protection when operating noisy tools. Dress properly. Do not wear loose clothing or jewelry. Keep hair, clothing, and gloves away from moving parts.

- **Tool Use and Care:** Do not force the power tool. Use the correct power tool for your application. Disconnect the plug from the power source before making any adjustments, changing accessories, or storing power tools.
- **Laser Safety:** This product uses a Class II laser. Do not stare directly into the laser beam. Avoid direct eye exposure. Maximum Average Radiant Power: 0.83mW.

3. PRODUCT FEATURES

The SKIL DP9505-00 Benchtop Drill Press incorporates several features designed for enhanced performance and user convenience:

- **Powerful 6.2 Amp Induction Motor:** Provides consistent power for drilling through various materials including wood and metal.
- **5-Speed System:** Offers speed settings from 610 to 2800 RPM, allowing selection of the optimal speed for different material types and bit sizes.
- **Laser Alignment System:** Projects a crosshair onto the workpiece for precise drilling maneuvers.
- **Adjustable Depth Stop:** Ensures accurate and consistent drilling depth, preventing over-drilling.
- **Adjustable Table Height:** Allows easy positioning of the workpiece for optimal drilling.
- **LED Worklight:** Illuminates the workspace for improved visibility and accuracy.
- **Bump-Off Switch:** Provides an added layer of safety by allowing quick power cutoff.
- **Tilting Work Surface:** The table can tilt from 0 to 45 degrees left and right for angled drilling.

4. ASSEMBLY

Before beginning assembly, ensure all components are present and undamaged. Refer to the included parts list for verification.

Included Components:

- 10 in Drill Press Unit
- Hex Wrench
- Chuck Key

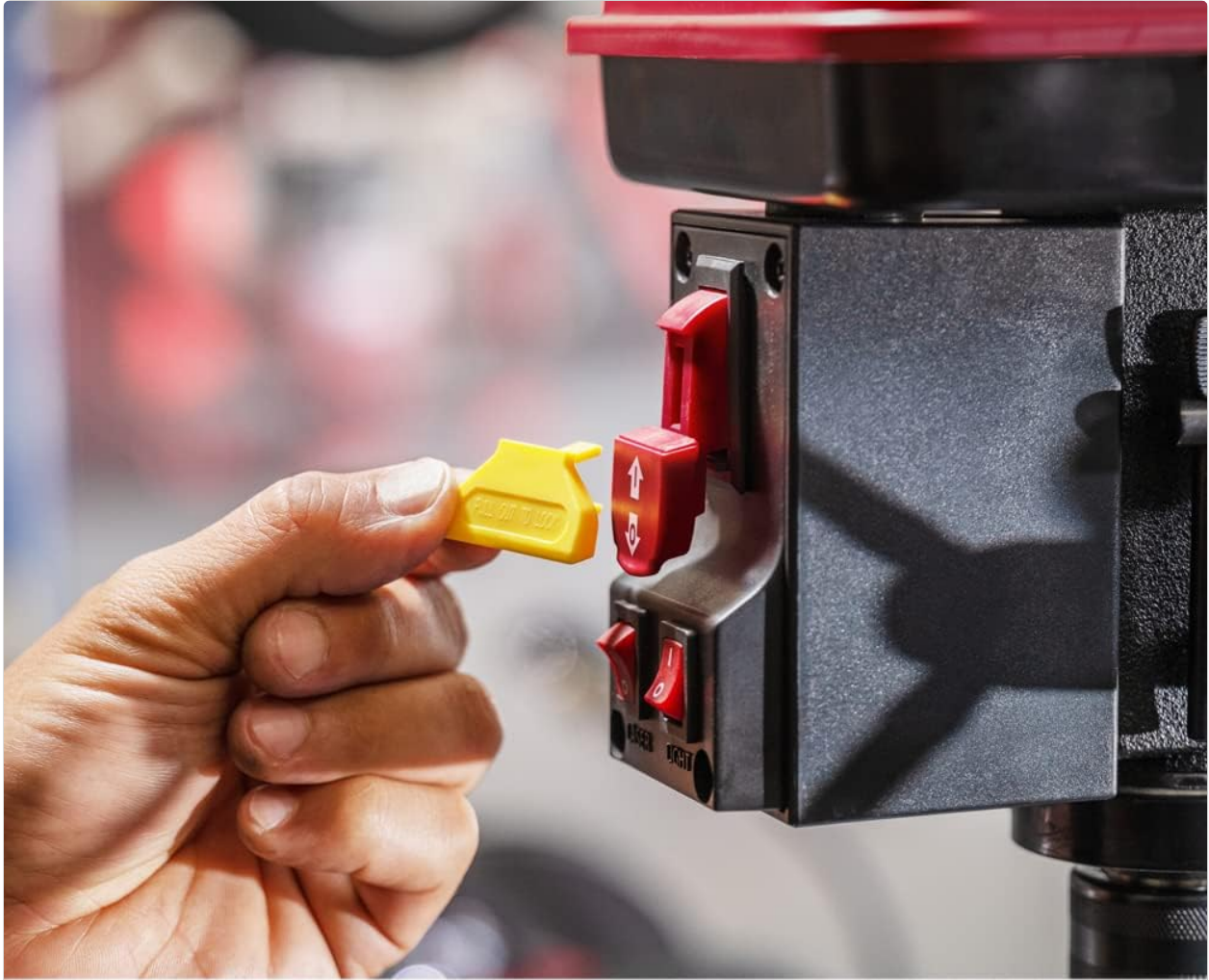
Assembly Steps:

1. **Base and Column Assembly:** Securely attach the column to the base using the provided hardware. Ensure all fasteners are tightened to the manufacturer's specifications.
2. **Table Assembly:** Slide the work table onto the column. Position it at a comfortable working height and secure it using the table lock handle.
3. **Head Assembly:** Carefully place the drill press head onto the top of the column. Align the head and secure it with the appropriate bolts and nuts.
4. **Chuck Installation:** Insert the chuck onto the spindle. Use a rubber mallet to gently tap the chuck into place, ensuring a firm fit.
5. **Handle Installation:** Attach the feed handles to the drill press head.
6. **Power Connection:** Connect the power cord to a grounded electrical outlet.

5. OPERATION

5.1 Powering On/Off and Safety Switch

The drill press is equipped with a safety bump-off switch. To operate, lift the safety pin and press the ON button. To turn off, press the large red OFF button or push the safety pin down.



BUMP-OFF SWITCH

Figure 2: Bump-Off Switch. This image shows the safety switch with a yellow key, designed for quick and secure power control.

5.2 Adjusting Spindle Speed (5-Speed System)

The drill press features a 5-speed pulley system to optimize drilling for different materials. To change speeds:

1. **Disconnect Power:** Always unplug the drill press before opening the pulley cover.
2. **Open Pulley Cover:** Lift the top cover of the drill press head.
3. **Adjust Belt Position:** Loosen the motor tension and move the drive belt to the desired pulley combination for the required RPM. Refer to the speed chart inside the cover for guidance.
4. **Re-tension Belt:** Adjust the motor to re-tension the belt.
5. **Close Cover:** Securely close the pulley cover.



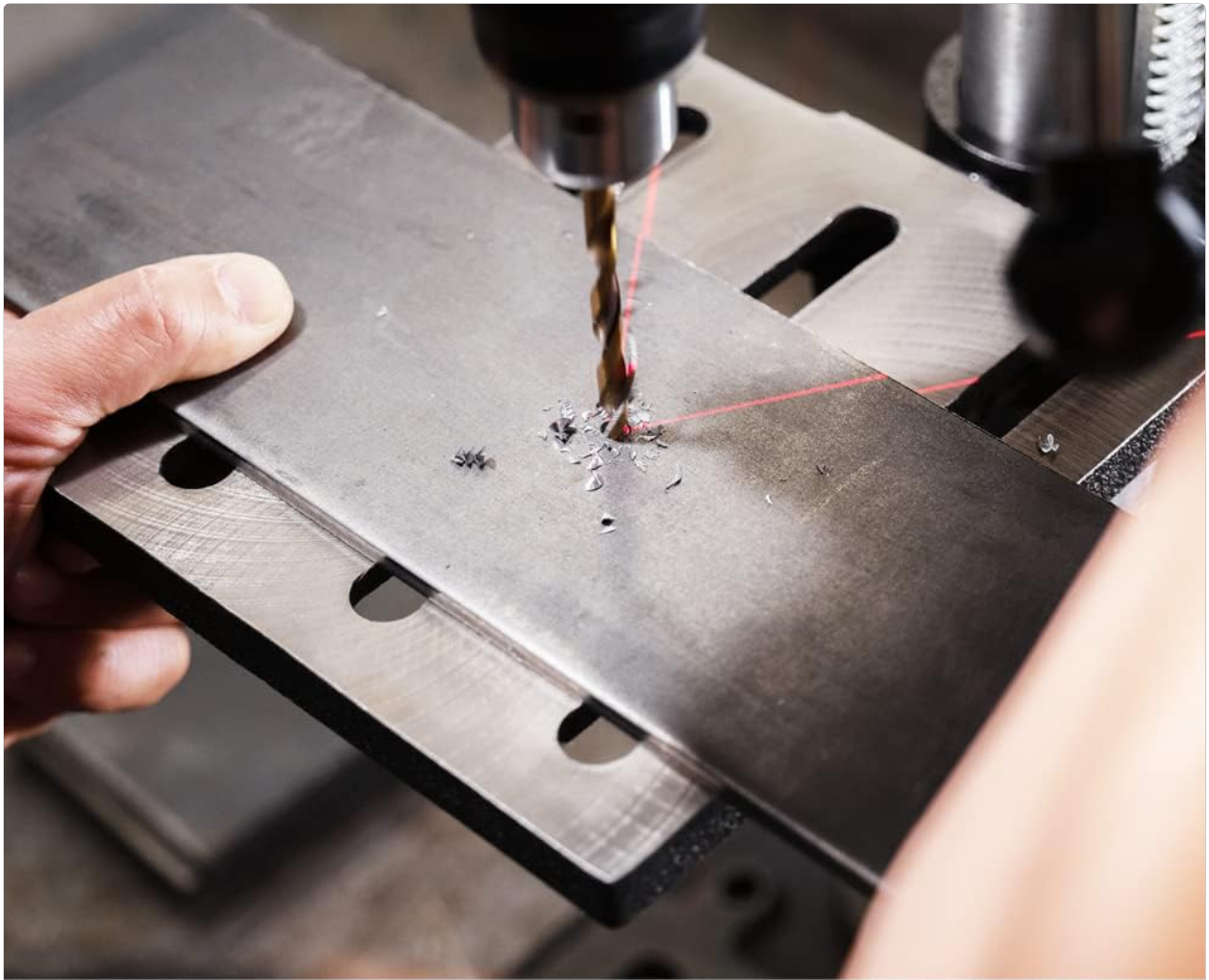
5-SPEED SYSTEM: 610 TO 2800 RPM

Figure 3: 5-Speed System. This image illustrates the belt and pulley system used to adjust the spindle speed for various drilling applications.

5.3 Using the Laser Alignment System

The integrated laser alignment system provides a visual guide for precise hole placement.

1. **Activate Laser:** Press the laser ON button located on the control panel.
2. **Position Workpiece:** Place your workpiece on the table. The laser crosshairs will indicate the exact point where the drill bit will enter the material.
3. **Adjust if Necessary:** If the laser is not perfectly aligned with the drill bit, refer to the calibration section in the full manual (not provided here) for adjustment instructions.



LASER ALIGNMENT SYSTEM

Figure 4: Laser Alignment System. This image demonstrates the laser crosshairs projected onto a metal workpiece, aiding in precise drilling.

5.4 Adjusting Drilling Depth

The adjustable depth stop allows for consistent and repeatable drilling depths.

1. **Lower Spindle:** Bring the drill bit down to the desired depth on your workpiece.
2. **Set Depth Stop:** Adjust the depth stop mechanism (a threaded rod with a nut) until it contacts the stop collar. Tighten the locking nut to secure the setting.
3. **Verify:** Raise the spindle and then lower it again to confirm the depth stop engages at the correct point.



ADJUSTABLE DEPTH STOP

Figure 5: Adjustable Depth Stop. This image shows a hand adjusting the threaded depth stop, which ensures consistent drilling depth.

5.5 Adjusting Work Table Height and Angle

The work table can be adjusted vertically and tilted for angled drilling.

1. **Height Adjustment:** Loosen the table lock handle. Use the crank to raise or lower the table to the desired height. Tighten the table lock handle to secure.
2. **Angle Adjustment:** Loosen the table tilt bolts. Tilt the table to the desired angle (0-45 degrees left or right). Use a protractor or angle finder for accuracy. Tighten the tilt bolts to secure the angle.



ADJUSTABLE TABLE HEIGHT

Figure 6: Adjustable Table Height. This image shows a hand using the crank to adjust the vertical position of the work table.

6. MAINTENANCE

Regular maintenance ensures the longevity and optimal performance of your drill press.

- **Cleaning:** Keep the machine clean and free of dust and debris. Use a vacuum cleaner for sawdust.
- **Lubrication:** Periodically lubricate moving parts such as the column and quill.
- **Belt Inspection:** Check the drive belt for wear, cracks, or slippage. Replace if necessary.
- **Chuck Maintenance:** Keep the chuck jaws clean and free of debris to ensure proper bit gripping.
- **Laser Calibration:** Periodically check and recalibrate the laser alignment system for accuracy.

7. TROUBLESHOOTING

This section addresses common issues you might encounter with your drill press.

Problem	Possible Cause	Solution
---------	----------------	----------

Problem	Possible Cause	Solution
Drill not starting	No power, safety switch not engaged, faulty switch.	Check power connection, ensure safety switch is fully engaged, inspect switch for damage.
Excessive vibration	Loose components, unbalanced bit, worn belt.	Tighten all fasteners, ensure bit is properly seated, check and replace belt if worn.
Inaccurate drilling	Loose table, misaligned laser, dull drill bit.	Secure table, recalibrate laser, replace or sharpen drill bit.
Motor overheating	Overloading, insufficient ventilation.	Reduce feed pressure, ensure proper ventilation around the motor.

8. SPECIFICATIONS

Specification	Value
Brand	Skil
Model Number	DP9505-00
Power Source	Corded Electric
Amperage	6.2 Amps
Voltage	120 Volts
Maximum Rotational Speed	2800 RPM
Number of Speeds	5
Maximum Chuck Size	0.5 Inches
Drilling Capacity (Wood)	0.5 Inches
Drilling Capacity (Metal)	0.5 Inches
Product Dimensions	24.02"L x 15.16"W x 12.4"H
Item Weight	46.65 Pounds
Laser Class	II
Maximum Average Radiant Power (Laser)	0.83mW
Included Components	10 in Drill Press; Hex Wrench; Chuck Key
Material	Blend

9. WARRANTY AND SUPPORT






The SKIL DP9505-00 Benchtop Drill Press comes with a 3-Year Limited Warranty. For warranty claims, technical support, or to purchase replacement parts, please contact SKIL customer service or visit the official


SKIL website.

You can also visit the [Skil Store on Amazon](#) for more product information and accessories.

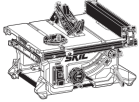
© 2023 Skil. All rights reserved.

Related Documents - DP9505-00

 <p>Owner's Manual Guide d'utilisation Manual del propietario</p> <p>Model / Modèle / Modelo: PM4910-00 / SM4910-00 40V 20" Brushless Lawn Mower Tondeuse à gazon sans fil sans fil 40 V, 50,8 cm (20 po) Cortadora de césped sin enchufe de 40 V de 20 pulgadas</p> <p>ALARMING: To reduce the risk of injury, the user must read and understand the Owner's Manual before using the product. Some items are not intended for use as a power tool. ALARMING: Afin de réduire les risques de blessure, l'utilisateur doit lire et comprendre le guide d'utilisation avant d'utiliser l'outil. Certains articles ne sont pas destinés à être utilisés comme outils électriques. ALARMING: Para reducir el riesgo de lesiones, el usuario debe leer y comprender el Manual del propietario antes de utilizar este producto. Algunos artículos no están destinados a ser utilizados como herramientas eléctricas.</p> <p>1-877-SKIL-400 or www.skil.com</p>	<p>SKIL 40V 20" Brushless Cordless Lawn Mower Owner's Manual</p> <p>Comprehensive owner's manual for the SKIL 40V 20" Brushless Cordless Lawn Mower (Models PM4910-00, SM4910-00). Includes safety, operation, assembly, maintenance, and troubleshooting guides.</p>
 <p>Owner's Manual Guide d'utilisation Manual del propietario</p> <p>Model / Modèle / Modelo: DL6280B-00 20V Brushless Drill Driver Perceuse vissière sans fil de 20 V Taladro de tornillo sin enchufe de 20 V</p> <p>ALARMING: To reduce the risk of injury, the user must read and understand the Owner's Manual before using the product. Some items are not intended for use as a power tool. ALARMING: Afin de réduire les risques de blessure, l'utilisateur doit lire et comprendre le guide d'utilisation avant d'utiliser cet outil. Certains articles ne sont pas destinés à être utilisés comme outils électriques. ALARMING: Para reducir el riesgo de lesiones, el usuario debe leer y comprender el Manual del propietario antes de utilizar este producto. Algunos artículos no están destinados a ser utilizados como herramientas eléctricas.</p> <p>1-877-SKIL-400 or www.skil.com</p>	<p>SKIL DL6280B-00 20V Brushless Drill Driver Owner's Manual</p> <p>This owner's manual provides essential operating instructions, safety guidelines, and maintenance information for the SKIL DL6280B-00 20V Brushless Drill Driver. It covers tool operation, safety warnings, bit installation, drilling techniques, troubleshooting, and warranty details.</p>
 <p>Owner's Manual Guide d'utilisation Manual del propietario</p> <p>Model / Modèle / Modelo: BY8705-00 / BY8708-00 40V Lithium Battery Batterie au Lithium 40V Bateria de 40 V</p> <p>ALARMING: To reduce the risk of injury, the user must read and understand the Owner's Manual before using the product. Some items are not intended for use as a power tool. ALARMING: Afin de réduire les risques de blessure, l'utilisateur doit lire et comprendre le guide d'utilisation avant d'utiliser cet outil. Certains articles ne sont pas destinés à être utilisés comme outils électriques. ALARMING: Para reducir el riesgo de lesiones, el usuario debe leer y comprender el Manual del propietario antes de utilizar este producto. Algunos artículos no están destinados a ser utilizados como herramientas eléctricas.</p> <p>1-877-SKIL-400 or www.skil.com</p>	<p>SKIL 40V Lithium Battery Owner's Manual and Safety Guide</p> <p>Official owner's manual for SKIL 40V Lithium Batteries (Models BY8705-00, BY8708-00). Provides comprehensive safety warnings, operating instructions, maintenance, battery care, disposal guidelines, troubleshooting tips, and warranty information from SKIL.</p>
 <p>Owner's Manual Guide d'utilisation Manual del propietario</p> <p>Model / Modèle / Modelo: SC5364-00 40V Charger Chargeur 40V Cargador de 40 V</p> <p>ALARMING: To reduce the risk of injury, the user must read and understand the Owner's Manual before using the product. Some items are not intended for use as a power tool. ALARMING: Afin de réduire les risques de blessure, l'utilisateur doit lire et comprendre le guide d'utilisation avant d'utiliser cet outil. Certains articles ne sont pas destinés à être utilisés comme outils électriques. ALARMING: Para reducir el riesgo de lesiones, el usuario debe leer y comprender el Manual del propietario antes de utilizar este producto. Algunos artículos no están destinados a ser utilizados como herramientas eléctricas.</p> <p>1-877-SKIL-400 or www.skil.com</p>	<p>SKIL SC5364-00 40V Charger Owner's Manual</p> <p>User manual and operating instructions for the SKIL SC5364-00 40V Battery Charger. Includes safety guidelines, specifications, charging procedures, troubleshooting, and warranty information.</p>
 <p>Model / Modèle / Modelo: 2887 Chuck Sleeve Replacement This guide shows how to replace the chuck sleeve. Written By: Jaramon</p> <p>1-877-SKIL-400 or www.skil.com</p>	<p>Skil X-Drive 18V Cordless Drill Model 2887 Chuck Sleeve Replacement Guide</p> <p>A step-by-step guide on how to replace the chuck sleeve on a Skil X-Drive 18V Cordless Drill, Model No. 2887. Includes required tools and detailed instructions.</p>



Owner's Manual
Guide d'utilisation
Manual del propietario




Model/ Modelo/ Modelo: TS6328-00
13 AMP 8-1/4 IN. COMPACT TABLE SAW
SIC À TABLE COMPACTE DE 13 A, 8-1/4 po
SIERRA DE MESA COMPACTA DE 8-1/4 PULGADAS DE 13 A

WARNING: To reduce the risk of injury, the user must read and understand the Owner's Manual before using this product. Save these instructions for future reference.

AVERTISSEMENT: Afin de réduire les risques de blessure, l'utilisateur doit lire et comprendre le guide d'utilisation avant d'utiliser cet article. Conservez le présent guide afin de pouvoir le consulter ultérieurement.

ADVERTENCIA: Para reducir el riesgo de lesiones, el usuario debe leer y comprender el Manual del operador antes de utilizar este producto. Guarde estas instrucciones para consultarlas en caso sea necesario.



For Customer Service
Pour le service à la clientèle
Servicio al cliente

1-877-SKIL-999 OR www.skil.com

[SKIL TS6328-00 13 Amp 8-1/4 Inch Compact Table Saw Owner's Manual](#)

This owner's manual provides essential safety warnings, operating instructions, and maintenance guidelines for the SKIL TS6328-00 13 Amp 8-1/4 Inch Compact Table Saw. Learn about safety symbols, proper usage, and troubleshooting to ensure safe and effective operation.

Documents - Skil – DP9505-00



Owner's Manual
Guide d'utilisation
Manual del propietario



Model/ Modelo/ Modelo: DP9505-00
Drill Press
Percuseuse à colonne
Taladro de columna

WARNING: To reduce the risk of injury, the user must read and understand the Owner's Manual before using this product. Save these instructions for future reference.

AVERTISSEMENT: Afin de réduire les risques de blessure, l'utilisateur doit lire et comprendre le guide d'utilisation avant d'utiliser cet article. Conservez le présent guide afin de pouvoir le consulter ultérieurement.

ADVERTENCIA: Para reducir el riesgo de lesiones, el usuario debe leer y comprender el Manual del operador antes de utilizar este producto. Guarde estas instrucciones para consultarlas en caso sea necesario.




For Customer Service
Pour le service à la clientèle
Servicio al cliente

1-877-SKIL-999 OR www.skil.com

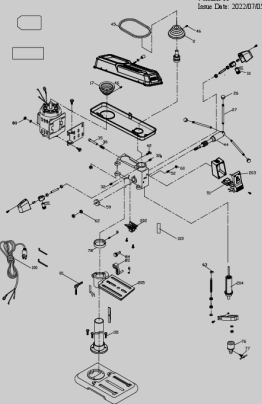
[\[pdf\]](#) User Manual Owner's Manual Instructions Guide

Drill Press Percuseuse à colonne Taladro de columna 1 877 SKIL 999 OR skil dp9505 00 drill press 22 0617 manual 345722 media productattach d p |||

Owner s Manual Guide d utilisation Manual del propietario Model/ Modelo/ Modle: **DP9505-00** Drill Press Percuseuse colonne Taladro de columna **WARNING:** To reduce the risk of injury, the user must read and understand the Owner s Manual before using this product. Save these instructions for future refer...
lang:es score:36 filesize: 11.02 M page_count: 96 document date: 2022-06-17



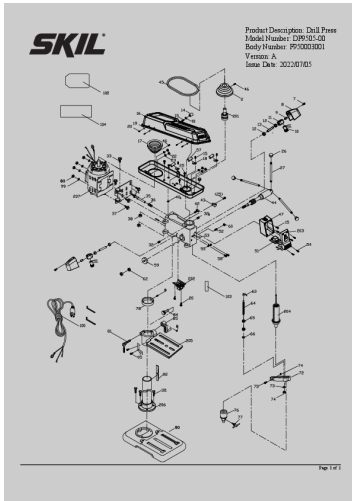
Product Description: Drill Press
Model Number: DP9505-00
Body Number: F950003001
Version: A
Issue Date: 2022/07/05



Page 1 of 1

[\[pdf\]](#) Parts List

DP9505 00 SKIL DRILL PRESS 22 0705 EXPLOSION DIRGRAM VERSION A Get Parts List 6 2 Amp 10 In Benchtop Drill Press dp9505 skil drill press version a 1 media productattach d p |||
Product Description: Drill Press Model Number: **DP9505-00** Body Number: F950003001 Version: A Issue Date: 2022/07/05 Page 1 of 1 No. Product Model# Part Number Description Qty 2 **DP9505-00** 3570372001 Spindle Pulley 1 9 **DP9505-00** 5610978001 Hex Socket Screw 4 10 **DP9505-00** 4370220001 Laser L...
lang:de score:32 filesize: 734.07 K page_count: 2 document date: 2022-10-21

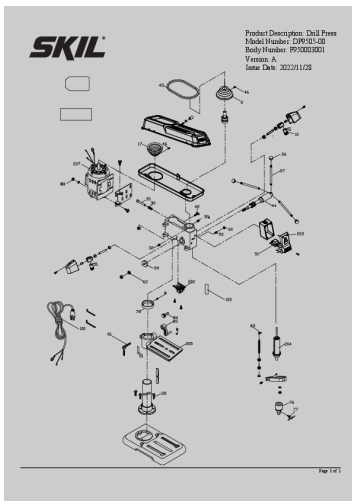


[\[pdf\]](#)

DP9505 00 SKIL DRILL PRESS 22 0607 EXPLOSION DIRGRAM VERSION A Obtenez la liste de pièces
Perceuse à colonne table 6 2 10 po dp9505 skil drill press version a fr media productattach d p |||

Product Description: Drill Press Model Number: **DP9505-00** Body Number:
F950003001 Version: A Issue Date: 2022/07/05 Page 1 of 1 No. Product Model# Part
Number Description Qty 2 **DP9505-00** 3570372001 Spindle Pulley 1 7 **DP9505-00**
5611009001 Phillips Screw 2 8 **DP9505-00** 3134030001 Laser Lam...

lang:en score:32 filesize: 708.64 K page_count: 3 document date: 2022-07-05

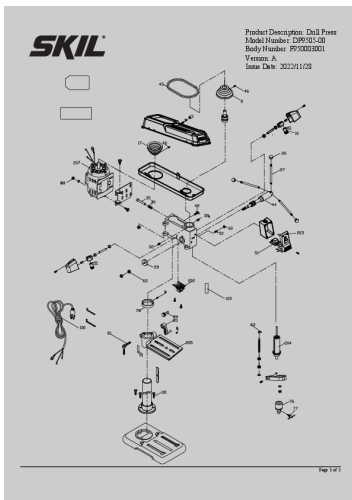


[\[pdf\]](#)

DP9505 00 SKIL DRILL PRESS 22 0705 EXPLOSION DIRGRAM VERSION A Body Number
F950003001 Version Issue Date Nov 28 2022 — 2 3570372001 Spindle Pulley 1 9 5610978001 Hex
Socket Screw 4 10 4370220001 Laser Lamp Assembly dp9505 skil drill press version a media
productattach d p |||

Product Description: Drill Press Model Number: **DP9505-00** Body Number:
F950003001 Version: A Issue Date: 2022/11/28 Page 1 of 1 No. Product Model# Part
Number Description Qty 2 **DP9505-00** 3570372001 Spindle Pulley 1 9 **DP9505-00**
5610978001 Hex Socket Screw 4 10 **DP9505-00** 4370220001 Laser L...

lang:de score:30 filesize: 734.8 K page_count: 2 document date: 2022-11-28



[\[pdf\]](#)

DRILL DP9505 00 SKIL Index of medias docus 86 PRESS 22 1128 EXPLOSION DIRGRAM VERSION A
18 214 131 24 |||

Product Description: Drill Press Model Number: **DP9505-00** Body Number:
F950003001 Version: A Issue Date: 2022/11/28 Page 1 of 1 ...

lang:de score:30 filesize: 536.17 K page_count: 1 document date: 2022-11-28



[SKIL 2024 Power Tool and Outdoor Equipment Product Catalog](#)

Explore the SKIL 2024 Product Catalog, showcasing a century of innovation in power tools and outdoor equipment. Discover the PWRCORE 12, PWRCORE 20, and PWRCORE 40 systems, featuring brushless motors, advanced battery technology with PWRJUMP and PWRASSIST, and a wide range of tools for professionals and homeowners.

lang:en score:21 filesize: 16.05 M page_count: 61 document date: 2023-12-22



[SKIL 2024 Product Catalog: Power Tools and Outdoor Equipment](#)

Explore the comprehensive SKIL 2024 Product Catalog, featuring innovative PWRCORE™ 12V, 20V, and 40V cordless tool systems, high-performance cutting tools, benchtop and corded options, lasers, levels, 4V screwdrivers, and a wide range of accessories for professionals and homeowners.

lang:en score:17 filesize: 16.05 M page_count: 61 document date: 2023-12-22



[SKIL 2023 Product Catalog: Power Tools & Outdoor Equipment](#)

Explore the SKIL 2023 Product Catalog featuring the innovative PWRCORE 12, 20, and 40 lithium battery systems. Discover a wide range of high-performance power tools, outdoor equipment, and accessories for professionals and DIY enthusiasts, backed by a 5-year warranty.

lang:en score:17 filesize: 74.39 M page_count: 57 document date: 2022-11-14



[SKIL 2025 Product Catalog: Power Tools & Outdoor Equipment](#)

Explore the SKIL 2025 Product Catalog featuring a comprehensive range of innovative power tools, outdoor equipment, and accessories. Discover PWRCORE 12, 20, and 40 systems, brushless technology, and 5-year warranty on SKIL products for professionals and homeowners.

lang:en **score:16** filesize: 21.99 M page_count: 132 document date: 2024-11-20



[\[pdf\] Catalog](#)

Catalogue de produits 2025 Scie à onglets coulissante double biseau 10 po 25 0520 SKIL Product

Catalog FR Page LowRes fr skil media contentmanager content |||

CATALOGUE DE PRODUITS 2025 Il y a plus de 100 ans d innovation derriere chaque pression sur la gch ... Broche de dmarrage 10 vis CORDED TOOLS 91 92

www.skil.com CORDED TOOLS PERCEUSE COLONNE **DP9505-00** DE 6,2 A, 10

PO Fonctionnalits 5 VITESSES, DE 610 2 800 TR/MIN Systeme 5 vitesses pour...

lang:fr **score:15** filesize: 35.39 M page_count: 132 document date: 2025-05-20



[Catalogue de Produits SKIL PWR CORE 2024 - Outils Électriques Sans Balais](#)

Découvrez le catalogue complet des outils électriques SKIL PWR CORE 2024, incluant les systèmes 12V, 20V et 40V, des perceuses, visseuses, scies, lasers et accessoires innovants pour professionnels et propriétaires.

lang:fr **score:15** filesize: 213.97 M page_count: 61 document date: 2024-01-29



[Catalogue de produits SKIL 2023](#)

Découvrez le catalogue officiel des produits SKIL pour l'année 2023, présentant une gamme complète d'outils électriques innovants et d'accessoires. Ce document met en lumière les dernières avancées technologiques de SKIL, conçues pour les professionnels et les bricoleurs exigeants, incluant les systèmes PWRCORE 12, PWRCORE 20 et PWRCORE 40, ainsi que la technologie de batterie TRUEHVL. Explorez les outils sans balais, les kits combinés, les solutions de charge rapide PWRJUMP et PWRASSIST, et des produits classés 5 étoiles, tous couverts par une garantie de cinq ans.

lang:fr score:14 filesize: 8.33 M page_count: 57 document date: 2023-05-30