

FOREO 2604387

FOREO LUNA 4 Face Cleansing Brush Instruction Manual

Brand: FOREO | Model: 2604387

INTRODUCTION

The FOREO LUNA 4 is a sophisticated facial cleansing brush and firming massager designed to enhance your skincare routine. It effectively removes dirt, oil, and makeup residue, while also improving the absorption of your skincare products. This manual provides detailed instructions for setting up, operating, maintaining, and troubleshooting your LUNA 4 device.

WHAT'S IN THE BOX

Upon unboxing your FOREO LUNA 4, you will find the following components:

WHAT'S IN THE BOX?

LUNA 4 Sensitive



Travel Pouch



Quick Start Guide



USB Charger



Basic Manual

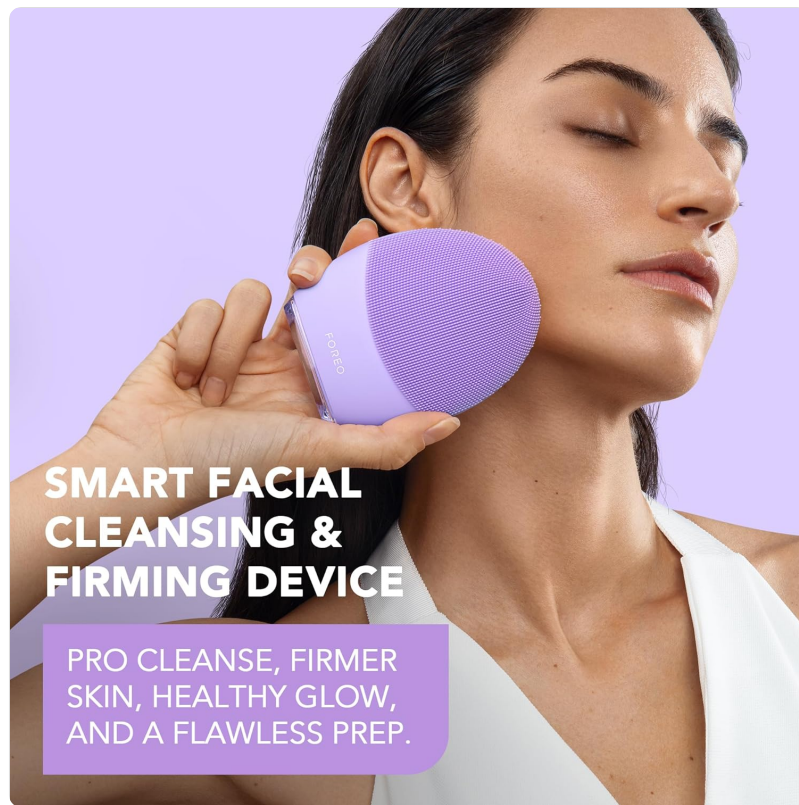
Image: The LUNA 4 device, travel pouch, quick start guide, USB charger, and basic manual as packaged.

- LUNA 4 Sensitive Device
- Travel Pouch
- Quick Start Guide
- USB Charger
- Basic Manual

KEY FEATURES

Gentle, Regular & Deep Cleanse

The LUNA 4 offers 16 intensities to effectively remove oil, sweat, and makeup residue in just one minute, providing a cleanse far beyond ordinary skincare products.



SMART FACIAL CLEANSING & FIRMING DEVICE

PRO CLEANSE, FIRMER
SKIN, HEALTHY GLOW,
AND A FLAWLESS PREP.

Image: The LUNA 4 in use for facial cleansing.

Targeted Firming Massage

This silicone facial cleansing brush also functions as a firming massager, offering 4 app-guided and 5 manual rejuvenating lower-frequency treatments for fresh, youthful-looking skin daily.

UNLOCK YOUR DEVICE

Before first use, download the FOREO For You mobile app to unlock and register your device. Follow these simple steps;

1. Download the FOREO For You app on your mobile phone
2. Log in to your account or sign up for a new one
3. Add device (on the top of your screen)
4. Choose device series
5. Press and hold the Power button to connect your device to the mobile app
6. Fill in the purchase information

And your device is ready to use!

TROUBLESHOOTING

PRECAUTIONS TO BE TAKEN IN THE EVENT OF CHANGES IN THE PERFORMANCE OF LUNA mini 3.

If LUNA mini 3 is not activated when pressing the center button:

- Battery is empty. Recharge using USB charging cable for 1.5 hours until fully charged and then restart your device by holding down the power button.

If LUNA mini 3 cannot be switched off and/or interface buttons do not respond:

- Microprocessor is temporarily malfunctioning. Press and hold the power button to restart the device.

If LUNA mini 3 won't sync to the FOREO app:

- Ensure that your device is fully charged and that your Bluetooth is turned on.
- Switch your Bluetooth off and then on again to try reconnecting.
- Close the FOREO app and then reopen it to start the process over.
- Delete and reinstall the application - perhaps the application simply needs to be updated.
- After deleting and reinstalling the application, make sure to restart your phone.
- Delete your phone's cookies and cache memory
- Ensure that your mobile's operating system has been updated to the latest version.

Image: The LUNA 4 being used for a firming massage.

Ultra-Hygienic Silicone

The LUNA 4 features silicone touchpoints that are 35 times more hygienic than nylon-bristled face brushes. This design prevents dirt buildup and transfer to delicate facial skin, ensuring the purest beauty

and personal care experience.



Image: Close-up of the LUNA 4's silicone touchpoints.

Enhanced Absorption

The combination of massage and soft silicone acts as an ideal face exfoliator, preparing your skin for enhanced absorption of active ingredients in your precious skincare products, maximizing their efficacy.

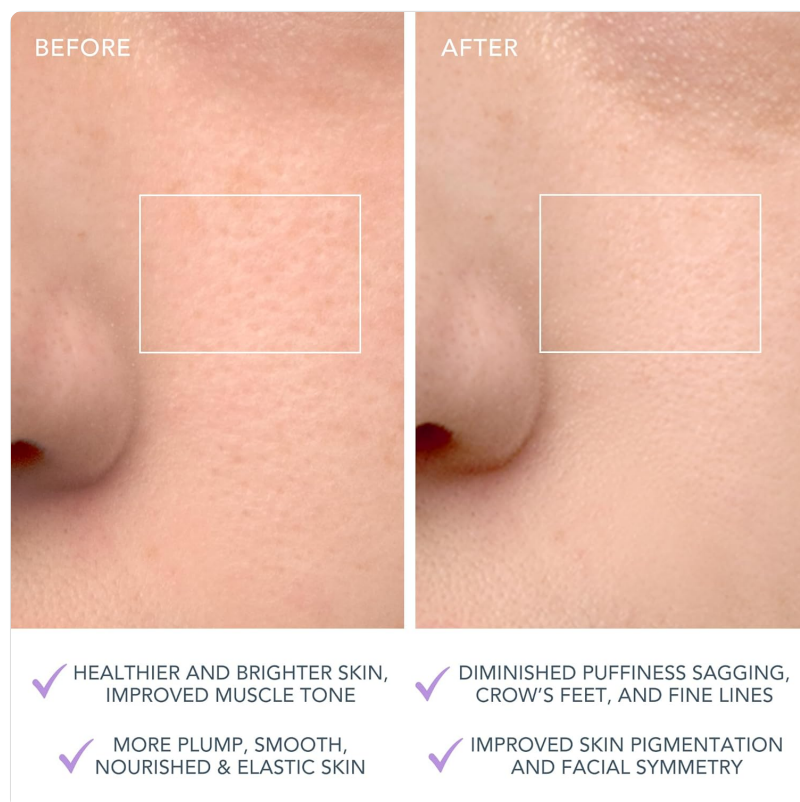


Image: The LUNA 4 with recommended skincare products.

Personalized Cleansing Experience

The LUNA 4 allows for adjustable duration and cleansing intensities, offering Gentle, Regular, and Deep modes based on your skin type and specific needs.



Image: Visual representation of LUNA 4's cleansing modes.

App-Connected Experience

Connect your LUNA 4 to the FOREO For You mobile app for guided routines, personalized settings, and manual controls, enhancing your overall skincare experience.



Image: The LUNA 4 connected to the FOREO mobile app.

SETUP AND FIRST USE

Unlocking Your Device

Before first use, you must download the FOREO For You mobile app to unlock and register your device. Follow these simple steps:

1. Download the FOREO For You app on your mobile phone. You can find it on the App Store or Google Play, or visit foreo.com/app.

2. Log in to your account or sign up for a new one.
3. Add device (located at the top of your screen).
4. Choose device series.
5. Press and hold the Power button to connect your device to the mobile app.
6. Fill in the purchase information.

Your device is now ready to use!

OPERATING INSTRUCTIONS

Cleansing Mode

To use the cleansing mode:

- Dampen your face and apply your preferred cleanser.
- Wet the LUNA 4 device.
- Press the power button to turn on the device.
- Gently glide the LUNA 4's silicone bristles in circular motions over your face for one minute.
- Adjust the intensity using the '+' and '-' buttons on the device, or through the FOREO For You app.
- Rinse your face and the device after use.

Firming Massage Mode

To use the firming massage mode:

- Apply a serum or moisturizer to your face and neck.
 - Turn on the LUNA 4 and select the firming massage mode (typically activated by a second press of the power button or via the app).
 - Glide the back of the device (with the ridges) outwards from the center of your face, following your natural contours.
 - The device offers 5 manual massage patterns and 4 app-guided routines for targeted treatments.
-

MAINTENANCE

Cleaning Your LUNA 4

Always clean your LUNA 4 thoroughly after each use. Wash the device with soap and water, then rinse with warm water. Pat dry with a lint-free cloth or towel. Avoid using cleansers containing alcohol, petrol, or acetone, as these may damage the silicone.

Charging

The LUNA 4 is rechargeable via the included USB cable. A full charge takes approximately 1.5 hours and provides up to 600 uses. When the battery is low, the indicator light will flash. Connect the USB cable to the charging port on the device and a power source.

UNLOCK YOUR DEVICE

Before first use, download the FOREO For You mobile app to unlock and register your device. Follow these simple steps;

1. Download the FOREO For You app on your mobile phone
2. Log in to your account or sign up for a new one
3. Add device (on the top of your screen)
4. Choose device series
5. Press and hold the Power button to connect your device to the mobile app
6. Fill in the purchase information

And your device is ready to use!

TROUBLESHOOTING

PRECAUTIONS TO BE TAKEN IN THE EVENT OF CHANGES IN THE PERFORMANCE OF FOREO DEVICES.

If your FOREO device is not activated when pressing the center button:

- Battery is empty. Recharge using USB charging cable for up to 2 hours until fully charged and then restart your device by holding down the power button. If device cannot be switched off and/or interface buttons do not respond:
- Microprocessor is temporarily malfunctioning. Press and hold the power button to restart the device.

If your FOREO device won't sync to the FOREO app:

- Ensure that your device is fully charged and that your Bluetooth is turned on.
- Switch your Bluetooth off and then on again to try reconnecting.
- Close the FOREO app and then reopen it to start the process over.
- Delete and reinstall the application - perhaps the application simply needs to be updated.
- After deleting and reinstalling the application, make sure to restart your phone.
- Delete your phone's cookies and cache memory
- Ensure that your mobile's operating system has been updated to the latest version.

Image: The LUNA 4 connected to its USB charger.

TROUBLESHOOTING

If you experience issues with your FOREO LUNA 4, refer to the following common problems and solutions:

- **Device not activating when pressing the center button:** The battery might be empty. Recharge using the USB charging cable for up to 2 hours until fully charged. Then, restart your device by holding down the power button.
- **Device cannot be switched off or interface buttons do not respond:** The microprocessor may be temporarily malfunctioning. Press and hold the power button to restart the device.
- **Device won't sync to the FOREO app:**
 - Ensure your device is fully charged and that your Bluetooth is turned on.
 - Switch your Bluetooth off and then on again to try reconnecting.
 - Close the FOREO app and then reopen it to start the process over.
 - Delete and reinstall the application; perhaps the application simply needs to be updated.
 - After deleting and reinstalling the application, make sure to restart your phone.
 - Delete your phone's cookies and cache memory.
 - Ensure that your mobile's operating system has been updated to the latest version.

PRODUCT SPECIFICATIONS

Attribute	Detail
-----------	--------

Product Dimensions	1.77 x 4.96 x 7.2 inches
Item Weight	4.44 ounces (0.13 Kilograms)
Item Model Number	2604387
Batteries	1 Lithium Polymer battery (included)
Manufacturer	Foreo
Skin Type	Sensitive
Product Benefits	Visibly cleaner, firmer & healthy looking skin. Improves absorption of facial skin care products. Simple & easy.

Safety Information

Please read and adhere to the following safety guidelines:

- If you have a skin condition or any medical concerns, please consult a dermatologist before use.
- FOREO treatments should be comfortable. If you experience discomfort, discontinue use and consult your physician.
- For hygiene reasons, do not share your device with anyone else.
- Avoid leaving your device in direct sunlight and never expose it to extreme heat or boiling water.
- Discontinue use if this product appears damaged in any way.
- Use this device for its intended purpose only.
- Before use, thoroughly read the full Product Manual for your device.

Support



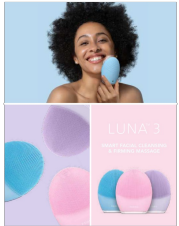


For further assistance, product registration, or warranty information, please visit the official FOREO website or contact FOREO customer support directly. You can find more information and support resources at www.foreo.com.

Related Documents - 2604387



[FOREO LUNA 2 Professional User Manual: High-Performance Deep Cleansing & Firming Facial Massage](#)

Discover the FOREO LUNA 2 Professional with this comprehensive user manual. Learn about its advanced T-Sonic™ technology for deep cleansing and firming facial massage, step-by-step usage, cleaning, charging, troubleshooting, and warranty information.

 <p>FOREO LUNA</p>	<p>FOREO LUNA™ User Manual: Facial Cleansing & Firming Massage Device</p> <p>Comprehensive user manual for the FOREO LUNA™ device, detailing its facial cleansing and firming massage functions, usage instructions, charging, safety precautions, troubleshooting, warranty, and disposal information.</p>
 <p>FOREO LUNA 4</p>	<p>FOREO LUNA 4: Smart Facial Cleansing & Firming Device User Manual</p> <p>Comprehensive online manual for the FOREO LUNA 4, a 2-in-1 smart facial cleansing and firming device. Learn about its features, modes, app integration, usage, care, and warranty.</p>
 <p>FOREO LUNA 3</p>	<p>FOREO LUNA 3 User Manual: Smart Facial Cleansing and Firming Massage</p> <p>Comprehensive user manual for the FOREO LUNA 3, detailing its smart facial cleansing, T-Sonic pulsations, firming massage modes, app connectivity, and usage instructions for smoother, younger-looking skin.</p>
 <p>FOREO LUNA</p>	<p>FOREO LUNA Facial Cleansing and Anti-Aging Massager User Manual</p> <p>User manual for the FOREO LUNA device, detailing its facial cleansing and firming massage functions, operation modes, cleaning, charging, safety precautions, troubleshooting, and warranty information.</p>
 <p>FOREO LUNA 2</p>	<p>FOREO LUNA 2 Professional User Manual: Deep Cleansing & Firming Facial Massage</p> <p>This user manual provides comprehensive instructions for the FOREO LUNA 2 Professional, a high-performance facial cleansing and firming massage device. Learn about its T-Sonic technology, multi-zone brush, usage modes, cleaning, charging, troubleshooting, and warranty.</p>