

[Manuals.plus](#) /

> [APOKE](#) /

> APOKE 3-in-1 Hair Dryer Brush User Manual

APOKE D500

APOKE 3-in-1 Hair Dryer Brush User Manual

MODEL: D500 | BRAND: APOKE

1. Introduction

Thank you for choosing the APOKE 3-in-1 Hair Dryer Brush. This professional 1200W ceramic tourmaline styler is designed to combine the functions of a hair dryer, hair straightener, and hair brush into one convenient tool, allowing you to dry and style your hair simultaneously. This manual provides important information for safe and effective use of your new appliance.

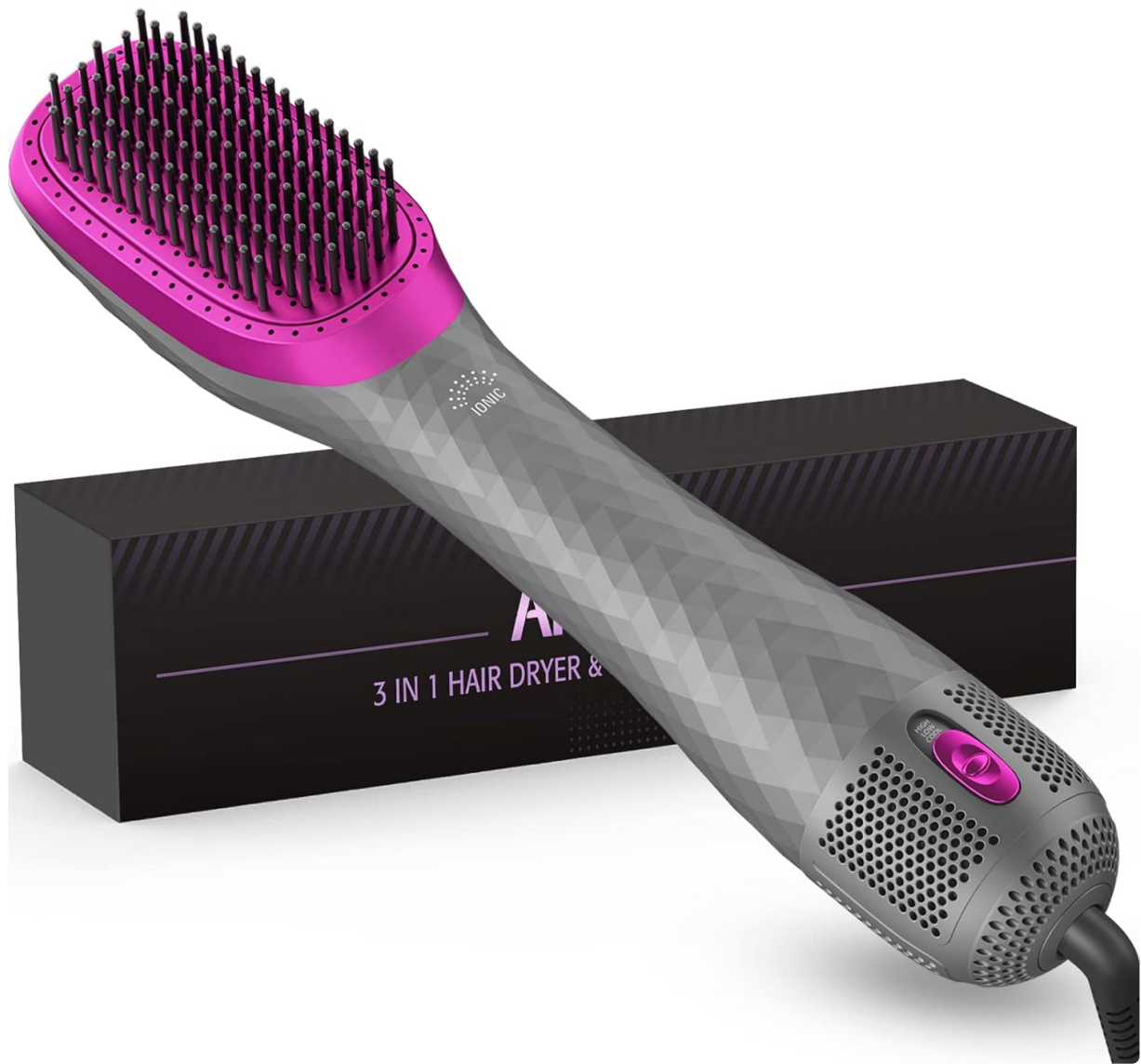


Image 1.1: The APOKE 3-in-1 Hair Dryer Brush, a versatile styling tool.

2. Safety Information

Please read all safety instructions carefully before using this appliance to reduce the risk of electric shock, burns, fire, or injury to persons.

- **Voltage Compatibility:** This appliance is designed to operate ONLY with a voltage of **100-125V**. Do not use with voltage converters or in regions with different voltage standards, as this may cause damage to the appliance or pose a safety risk.
- Always unplug the appliance immediately after use and before cleaning.
- Do not use while bathing or in a shower.
- Do not place or store appliance where it can fall or be pulled into a tub or sink.
- Do not place in or drop into water or other liquid.
- Do not reach for an appliance that has fallen into water. Unplug immediately.
- Keep the cord away from heated surfaces.
- Never block the air openings of the appliance or place it on a soft surface, such as a bed or couch, where the air openings may be blocked. Keep the air openings free of lint, hair, and the like.
- Never use while sleeping.
- Never drop or insert any object into any opening.
- Do not use outdoors or operate where aerosol (spray) products are being used or where oxygen is

being administered.

- Do not wrap the power cord around the unit, as this can damage the cord and lead to electrical hazards.
- This appliance is not intended for use by persons (including children) with reduced physical, sensory or mental capabilities, or lack of experience and knowledge, unless they have been given supervision or instruction concerning use of the appliance by a person responsible for their safety.

3. Product Features

The APOKE 3-in-1 Hair Dryer Brush is engineered for efficient and effective hair styling, incorporating several key features:

- **3-in-1 Functionality:** Combines a hair dryer, hair straightener, and hair brush/hot comb into a single device, streamlining your styling routine.
- **Powerful 1200W Motor:** Delivers strong airflow for quick drying and styling.
- **Ceramic Tourmaline Technology:** Ensures even heat distribution and helps reduce heat damage.
- **3 Heat/2 Speed Settings:** Offers versatile styling options for various hair types and desired looks.
- **Negative Ion Technology:** Emits over 10,000,000/cm³ negative ions to reduce frizz, static, and enhance hair shine and volume.
- **Ergonomic Handle:** Designed for comfortable grip and ease of use during styling.
- **Nylon Brushes with Ball-tips:** Gentle on the scalp and effective for detangling and smoothing hair.
- **360° Swivel Power Cord:** Provides flexibility and prevents tangling during use.

3 in 1 Hair Dryer & Straightener Brush



Hair Dryer



Hair Straightener



Hair Comb

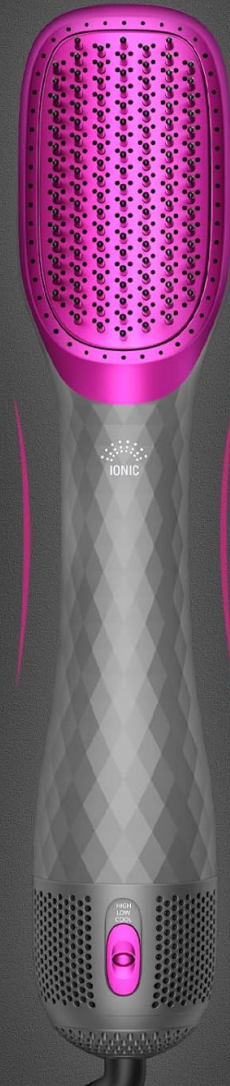


Image 3.1: The 3-in-1 design integrates drying, straightening, and brushing.

Double Ionic Technology

Produce More Negative Ions to Make Your Hair Healthier and Smoother



Image 3.2: Double Ionic Technology for healthier, smoother hair.



Image 3.3: Key design elements including ergonomic handle and swivel cord.

4. Package Contents

Upon opening your APOKE 3-in-1 Hair Dryer Brush package, you should find the following items:

- APOKE 3-in-1 Hair Dryer Brush (Model D500)
- User Manual (this document)

5. Setup

Setting up your APOKE 3-in-1 Hair Dryer Brush is simple:

1. Ensure your hands are dry before handling the plug.
2. Uncoil the power cord completely.
3. Plug the appliance into a standard 100-125V electrical outlet.

6. Operating Instructions

Follow these steps for effective drying and styling:

1. **Prepare Hair:** For best results, towel-dry your hair to remove excess water. The brush works best on damp, not soaking wet, hair.
2. **Select Settings:** Use the switch on the handle to select your desired heat and speed setting. The appliance offers three temperature control settings:
 - **COOL (140°F/60°C):** Low heat with high speed, ideal for soft/fine/thin hair, or to set the hairstyle at the end of drying.
 - **LOW (210°F/100°C):** Warm heat with low speed, suitable for semi-dry/normal hair.
 - **HIGH (248°F/120°C):** Hot heat with high speed, recommended for thick/coarse hair and quick drying.
3. **Begin Styling:** Divide your hair into manageable sections. Start brushing through damp hair, beginning at the roots and slowly working your way down to the ends.
4. **Continue Brushing:** Repeat the process for each section until your hair is dry and straightened to your desired style. The brush's design allows for simultaneous drying and smoothing.

1200W Powerful
3 Heat/2 Speed Settings for All Hair Types




COOL - 140°F/60°C Low Heat with High Speed - for soft/fine/thin hair, or set the hairstyle at the end of drying

LOW - 210°F/100°C Warm Heat with Low Speed - for semi-dry/normal hair

HIGH - 248°F/120°C Hot Heat with High Speed - for thick/coarse hair and quick drying

Image 6.1: Understanding the 3 Heat/2 Speed Settings.



Image 6.2: Using the hair dryer brush for efficient drying.



Image 6.3: Achieving smooth, straightened hair with the brush.

7. Maintenance

Proper maintenance ensures the longevity and performance of your hair dryer brush:

- **Cleaning:** Ensure the appliance is unplugged and completely cool before cleaning. Wipe the exterior with a soft, damp cloth. Regularly remove any hair tangled in the bristles to maintain optimal performance.
- **Storage:** Store the appliance in a cool, dry place. Do not wrap the power cord tightly around the appliance, as this can damage the cord over time. Hang it by its loop or store it loosely coiled.

8. Troubleshooting

If you encounter any issues with your APOKE 3-in-1 Hair Dryer Brush, please refer to the following common solutions:

- **Appliance not turning on:** Ensure the power cord is securely plugged into a functioning 100-125V electrical outlet. Check if the outlet itself is working by plugging in another device.
- **Weak airflow or unusual noise:** Check the air intake and exhaust vents for any blockages (e.g., lint, dust, hair). Clean them if necessary. Ensure the bristles are free of excessive hair buildup.
- **Unusual smell:** A slight odor may occur during the first few uses due to manufacturing residues burning off. If a strong or burning smell persists, immediately unplug the device and discontinue use. Contact customer support.
- **Hair not straightening effectively:** Ensure your hair is damp (not soaking wet) and divided into

small, manageable sections. Use the appropriate heat setting for your hair type (e.g., HIGH for thick/coarse hair). Brush slowly from roots to ends.

If the problem persists after trying these steps, please contact APOKE customer support for further assistance.

9. Specifications

Attribute	Specification
Brand	APOKE
Model Number	D500
Product Dimensions	12.8 x 2.76 x 2.36 inches
Item Weight	1.1 Pounds
Color	Gray
Material	Ceramic, Tourmaline
Wattage	1200W
Power Source	Corded Electric
Operating Voltage	100-125V

10. Warranty and Support

APOKE is committed to providing high-quality products. For any product-related inquiries, technical support, or warranty claims, please contact APOKE customer service.

Optional protection plans may be available for extended coverage:

- 2-Year Protection Plan
- 3-Year Protection Plan

Please refer to your purchase documentation for specific warranty terms and conditions.