

ABASK J05

abask J05 Dashcam User Manual

Model: J05

INTRODUCTION

Thank you for choosing the abask J05 Dashcam. This manual provides detailed instructions on how to set up, operate, and maintain your dashcam to ensure optimal performance and safety. The abask J05 Dashcam is designed to provide reliable video and image recording for your vehicle, capturing crucial details on the road and inside the cabin.



Image: The abask J05 Dashcam, showing the main unit, suction cup mount, and an included 32GB Micro SD card.

PACKAGE CONTENTS

Please verify that all items listed below are included in your package:

- 1 x abask J05 Dashcam with Cabin Camera (New 2022 Version)
- 1 x 32 GB Micro SD Card (pre-installed in the camera)
- 1 x Cigarette Lighter Adapter (3.5 m USB cable car charger)
- 1 x Suction Cup Mount
- 1 x Mini-B USB Cable (0.6 m)
- 1 x User Manual
- 1 x Pry Tool
- 4 x Cable Clips

PRODUCT FEATURES

Dual 1080P FHD Video Recording

The J05 Dashcam features dual cameras, providing Full HD 1080p recording for both the front view and the interior cabin. This allows for clear video and audio capture of both road events and passenger interactions simultaneously.

1080P Front

1080P Cabin

Dual 1080p HD Video Recording
Allowing you to capture crisp video and audio of your passengers,
as well as still recording the road ahead.

Image: Illustration of the dual 1080p recording capability, capturing both the road ahead and the vehicle's interior.

Crystal Clear Video & Super Night Vision

Equipped with a 6-layer HD lens and WDR (Wide Dynamic Range) technology, the dashcam delivers crystal-clear video and image quality in various lighting conditions, day or night. Four infrared (IR) LEDs enable clear recording even in a dark car interior.



Super Night Vision

Thanks to 1080P and HDR, the front cam takes crisp videos even at night;
And with 4 IR LEDs, the cabin cam captures what happened when it is dark in car.



IR LED Lights



Dual 1080P



HDR

Image: Depiction of the Super Night Vision feature, highlighting the effectiveness of IR LEDs and HDR in low-light conditions.

24-hour Parking Monitoring & Motion Detection

The dashcam monitors your vehicle 24/7 when parked. If an impact or motion is detected, the camera automatically begins video recording. This feature is highly useful for documenting incidents like vandalism. For continuous parking monitoring, the camera must be hardwired to the fuse box (hardwiring kit not included).

24-hour Parking Mode

**Monitor your car 24/7 when you are away.
Once it detects and impact it will begin to record video.**



**Built-in 150mAh Rechargeable Battery: No Hardwiring
Kits Needed, Auto-Records on Vibration**

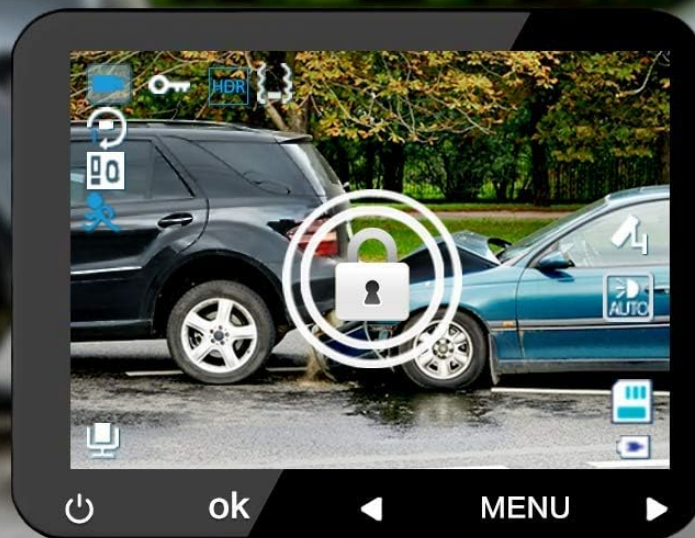
Image: Visual representation of the 24-hour Parking Mode, indicating automatic recording upon impact detection.

Automatic Storage, G-sensor & Loop Recording

In the event of a car accident or collision, the built-in G-sensor automatically detects the impact and locks the current video file, saving it as evidence that cannot be overwritten by loop recording. Unlocked data is automatically deleted to ensure continuous recording space.

G-sensor & Loop Recording

If a car crash or collision occurs, the dash cam will automatically lock and save the current recorded video as evidence that will not be overwritten by loop recording.



Auto overwrite
the oldest files



File 1
overwrite pending



Important file
locked and protected



File 2
overwrite pending

Image: Diagram illustrating the G-sensor and Loop Recording functions, showing how important video files are protected from overwriting.

Total 310° Wide-angle Field of View

The dashcam offers a wide viewing angle of 170° for the front camera and 140° for the interior camera, providing a comprehensive view of the road ahead and the entire inside of your car.



Image: Visual representation of the 310-degree wide-angle view, combining the 170-degree front view and 140-degree interior view.

SETUP

1. **Mounting the Dashcam:** Securely attach the dashcam to your car's front windshield using the provided suction cup mount. Choose a location that does not obstruct your driving view.
2. **Cable Management:** Carefully route and hide the power cable along the edges of your windshield and dashboard. Use the included cable clips and pry tool to neatly tuck away the cables.
3. **Power Connection:** Plug the cigarette lighter adapter into your car's 12V power outlet. Connect the other end of the USB cable to the dashcam. The dashcam will power on automatically when your vehicle starts.

4. **SD Card Insertion:** Ensure the 32GB Micro SD card is properly inserted into the designated slot on the dashcam. The card is typically pre-installed.



Easy Installation

Mount the camera on the windshield and then
hide the cables, finally plug cigarette lighter to power on.

Image: Step-by-step illustration of the easy installation process, including mounting the dashcam and routing the power cable.

OPERATING INSTRUCTIONS

Basic Operation

- **Power On/Off:** The dashcam automatically powers on and off with your vehicle's ignition. You can also manually power it on/off by pressing and holding the power button.
- **Recording:** Once powered on, the dashcam automatically begins loop recording. A recording indicator will be

visible on the screen.

- **Screen Display:** The LCD screen displays the live view from both cameras. You can switch between views or turn off the screen to avoid distraction while recording continues.

Menu Navigation

Use the "OK" and "MENU" buttons, along with the arrow keys, to navigate through the dashcam's settings. Common settings include:

- **Resolution:** Adjust video recording resolution (e.g., 1080p).
- **Loop Recording:** Set the duration of video segments (e.g., 1, 3, 5 minutes).
- **G-sensor Sensitivity:** Adjust the sensitivity of the G-sensor for impact detection.
- **Parking Monitor:** Enable or disable parking monitoring.
- **Motion Detection:** Enable or disable motion detection for parking mode.
- **Date/Time Stamp:** Ensure the correct date and time are set for accurate recording timestamps.

Viewing and Managing Recordings

- **On-Device Playback:** Access recorded videos directly on the dashcam's screen through the playback menu.
- **Computer Playback:** Remove the SD card and insert it into a computer's card reader to view and manage files. Alternatively, connect the dashcam directly to a computer using the Mini-B USB cable.
- **File Protection:** Locked files (triggered by G-sensor) are stored in a separate folder and are not overwritten by loop recording.

MAINTENANCE

- **Clean the Lens:** Regularly clean the camera lenses with a soft, lint-free cloth to ensure clear video quality. Avoid abrasive materials.
- **SD Card Formatting:** It is recommended to format the Micro SD card every 2-4 weeks to prevent data corruption and ensure smooth operation. Back up any important files before formatting.
- **Temperature:** Avoid exposing the dashcam to extreme temperatures for prolonged periods, as this can affect battery life and component integrity.
- **Firmware Updates:** Check the official abask website periodically for any available firmware updates to improve performance and add new features.

TROUBLESHOOTING

Problem	Possible Cause / Solution
Dashcam does not power on.	Check if the cigarette lighter adapter is properly connected and receiving power. Ensure the vehicle's 12V power outlet is functional. The internal battery might be depleted; charge it by keeping the dashcam connected to power.
Recording stops or freezes.	The SD card may be full. Format the SD card (back up important files first). The SD card may be faulty or too slow. Use a high-speed (Class 10 or U1/U3) Micro SD card. Reset the dashcam to factory settings.

Problem	Possible Cause / Solution
Poor video quality.	Clean the camera lenses. Ensure the protective film has been removed from the lens. Check video resolution settings.
Parking monitor not working.	Ensure the parking monitor feature is enabled in settings. For continuous 24/7 monitoring, the dashcam needs to be hardwired to the car's fuse box.

SPECIFICATIONS

Feature	Detail
Brand	abask
Model Name	J05 Dashcam
Model Number	J05
Video Recording Resolution	1080p
Display Type	LCD
Screen Size	1.5 Inches (4 cm)
Viewing Angle (Front)	170 Degrees
Viewing Angle (Interior)	140 Degrees
Total Viewing Angle	310 Degrees
Special Features	Night Vision, Loop Recording, G-sensor, Parking Monitoring, Motion Detection
Flash Memory Type	SD Card
Included Memory Card Size	32 GB
Mounting Type	Suction Cup Holder
Connectivity Technology	Infrared
Power Source	Battery (Rechargeable), Car Charger
Product Dimensions	3.9 x 11.1 x 3.97 cm; 360 g

WARRANTY AND SUPPORT

abask products are designed for reliability and performance. For any technical assistance, warranty claims, or product inquiries, please contact abask customer support. Refer to the contact information provided on the product packaging or the official abask website.

Please retain your proof of purchase for warranty purposes.

Documents - ABASK – J05



[\[pdf\]](#) User Manual

J05 Administrator Abask J05 Dash Cam Manual v 1638254324 cdn shopifycdn net s files 1 0601 7859 6035 |||
User Manual Contents English.....1-17 Deutsch..... ..
interface External power supply Light Frequency Battery Storage temperature
Operating temperature **J05** 1080FHD/720P/VGA VGA/1M/2M/3M/5M/8M/10M 1.5
inch LCD Display 170 High-Resolution Wide Angle Lens...
lang:en score:28 filesize: 1.05 M page_count: 91 document date: 2021-03-16



[Abask J05Pro Dash Cam User Manual](#)

Comprehensive user manual for the Abask J05Pro Dash Cam, covering installation, setup, features, troubleshooting, and warranty information. Learn how to use your dash cam for optimal performance and safety.
lang:en score:21 filesize: 1.39 M page_count: 149 document date: 2024-04-23



[\[pdf\]](#) User Manual

Manuale Utente IT 2 Administrator utente Abask Dash Cam Doppia Telecamera per Auto con Cabina
FHD 1080P Visione Notturna Grandangolare di 310° G Sensor Registrazione in Loop Monitor Parcheggio
Scheda SD da 32 GB inclusa Amazon.it Elettronica 91D2txAs9rL m media amazon images I |||
User Manual Suggerimenti raccomandati: Formattare la scheda di memoria nel menu
della fotocamera a ... Alimentazione esterna Frequenza della luce Batteria
Temperatura di conservazione Betriebstemperatur **J05** 1080FHD / 720P / VGA VGA /
1M / 2M / 3M / 5M / 8M / 10M Display LCD da 1,5 pollici Obiettivo gra...
lang:it **score:16** filesize: 833.26 K page_count: 19 document date: 2021-04-29



[Abask J05 Dash Cam User Manual](#)

User manual for the Abask J05 Dash Cam, detailing setup, operation, features, and troubleshooting for this FHD Dual 1080P vehicle camera.
lang:en **score:14** filesize: 988.4 K page_count: 141 document date: 2023-01-12