

Kejector PH770-8M

Kejector PH770-8M Trail Camera User Manual

Model: PH770-8M

INTRODUCTION

This manual provides detailed instructions for the setup, operation, and maintenance of your Kejector PH770-8M Trail Camera. Please read this manual thoroughly before using the camera to ensure proper function and to maximize its performance. Keep this manual for future reference.

PRODUCT OVERVIEW

The Kejector PH770-8M is a versatile trail camera designed for various applications including wildlife monitoring, hunting, farm security, and home surveillance. It features high-resolution imaging, fast trigger speed, and robust weather resistance.

Package Contents

Verify that all items are present in your package:

- Kejector PH770-8M Trail Camera
- 32GB SD Card
- Mounting Bracket
- Screws
- USB Cable
- Strap
- User Manual (this document)

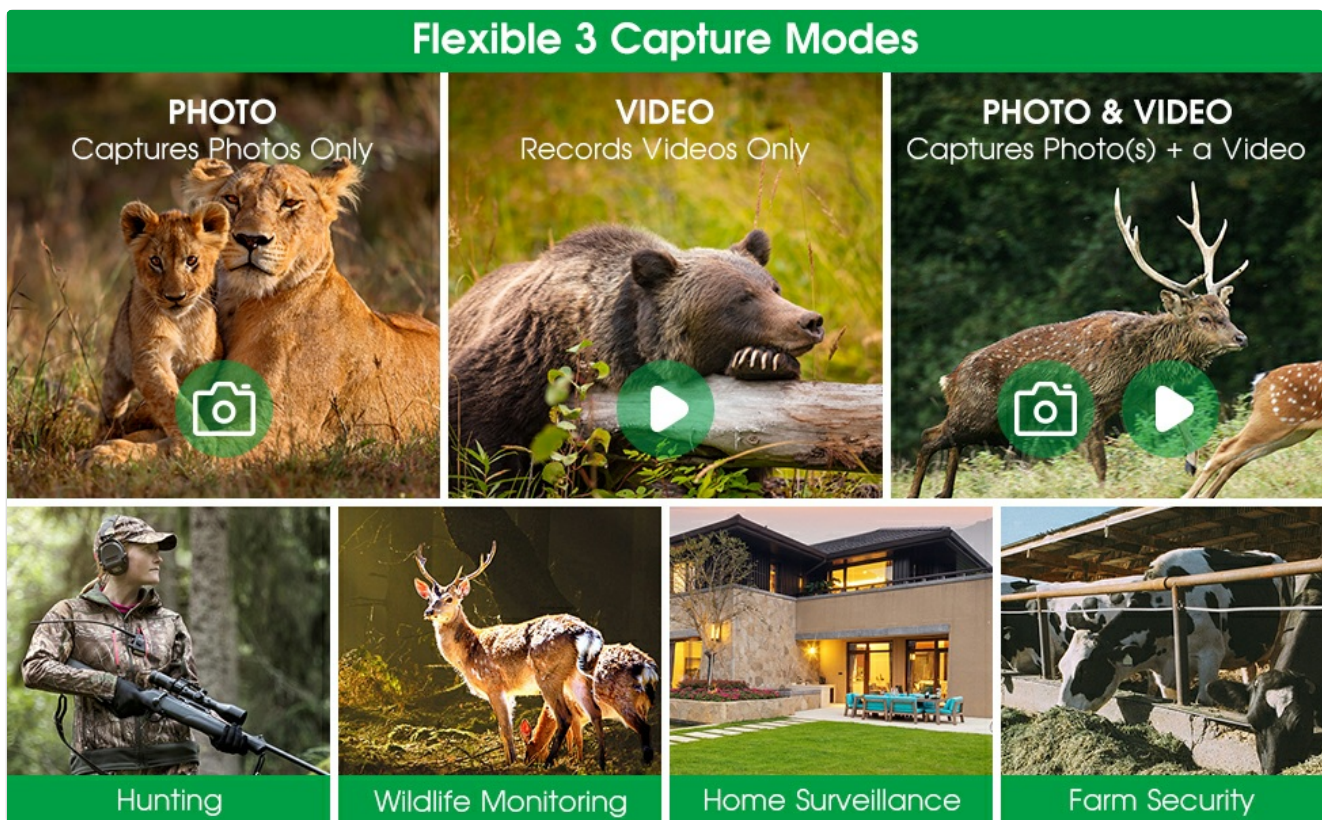


Figure 1: Package Contents

Key Features

- **High Resolution Imaging:** Captures 32 Megapixel still images and 4K HD video.
- **Fast Trigger Speed:** 0.2-second trigger speed to capture rapid movements.
- **Night Vision:** Equipped with 850nm Low Glow IR LEDs for invisible flash and clear night vision up to 65 feet.
- **Wide Coverage:** 90-degree detection angle for a broader sensing area.
- **Durable Design:** IP66 waterproof rating, designed to withstand harsh weather conditions.
- **Flexible Capture Modes:** Supports Photo, Video, and Photo + Video modes.
- **Time Lapse Function:** Allows for capturing events over extended periods.
- **Storage:** Supports SD cards up to 512GB (32GB card included).

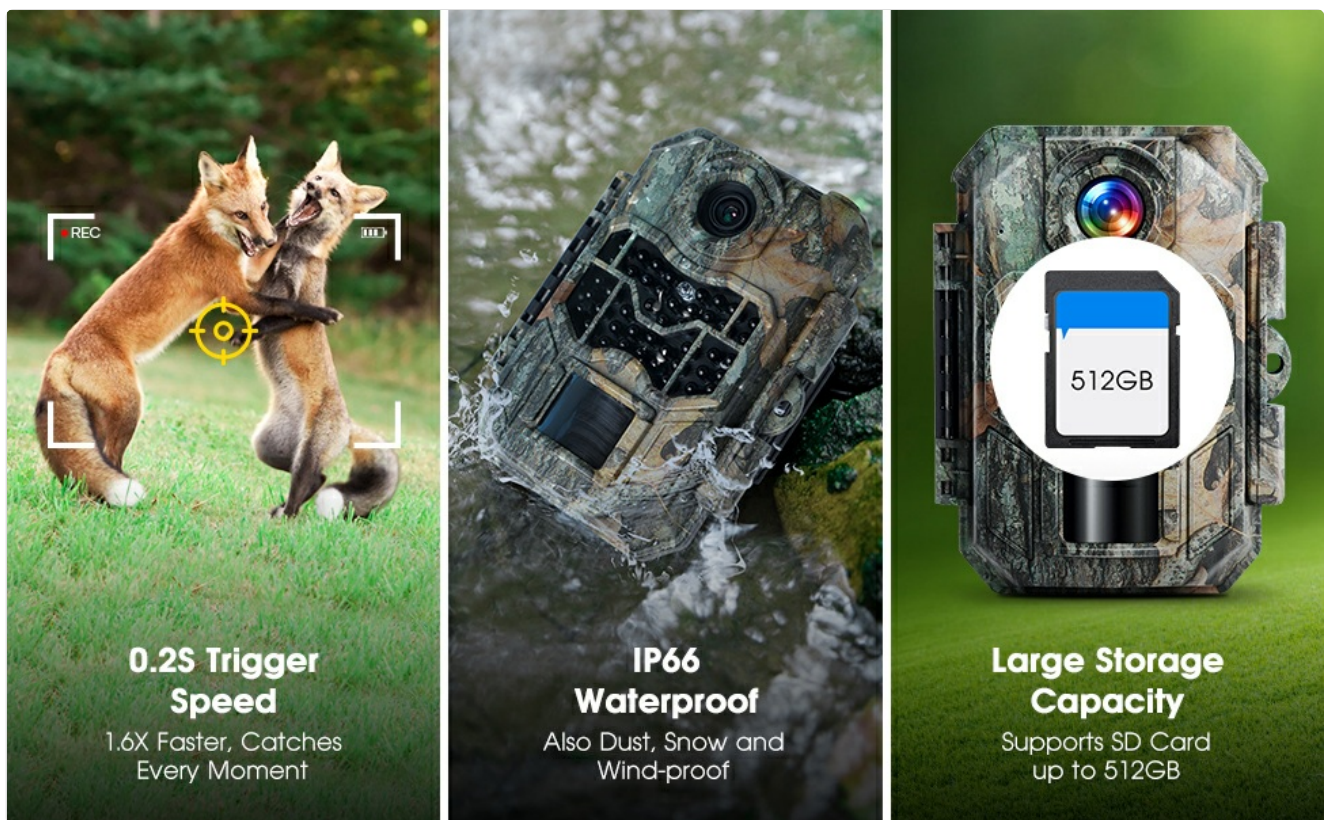


Figure 2: IP66 Waterproof Design

SETUP

1. **Install Batteries:** The camera requires 4 or 8 x 1.5V AA batteries. Open the camera casing and insert the batteries according to the polarity indicators. Alternatively, connect a 6V, 1.5A DC external power supply.
2. **Insert SD Card:** Insert the included 32GB SD card into the designated slot. Ensure it is inserted correctly until it clicks into place. The camera supports SD cards up to 512GB.
3. **Mounting the Camera:**
 - Use the provided strap to secure the camera to a tree or pole. Thread the strap through the camera's mounting slots and tighten it securely.
 - Alternatively, use the mounting bracket and screws to attach the camera to a wall or other flat surface. Adjust the bracket to achieve the desired camera angle.

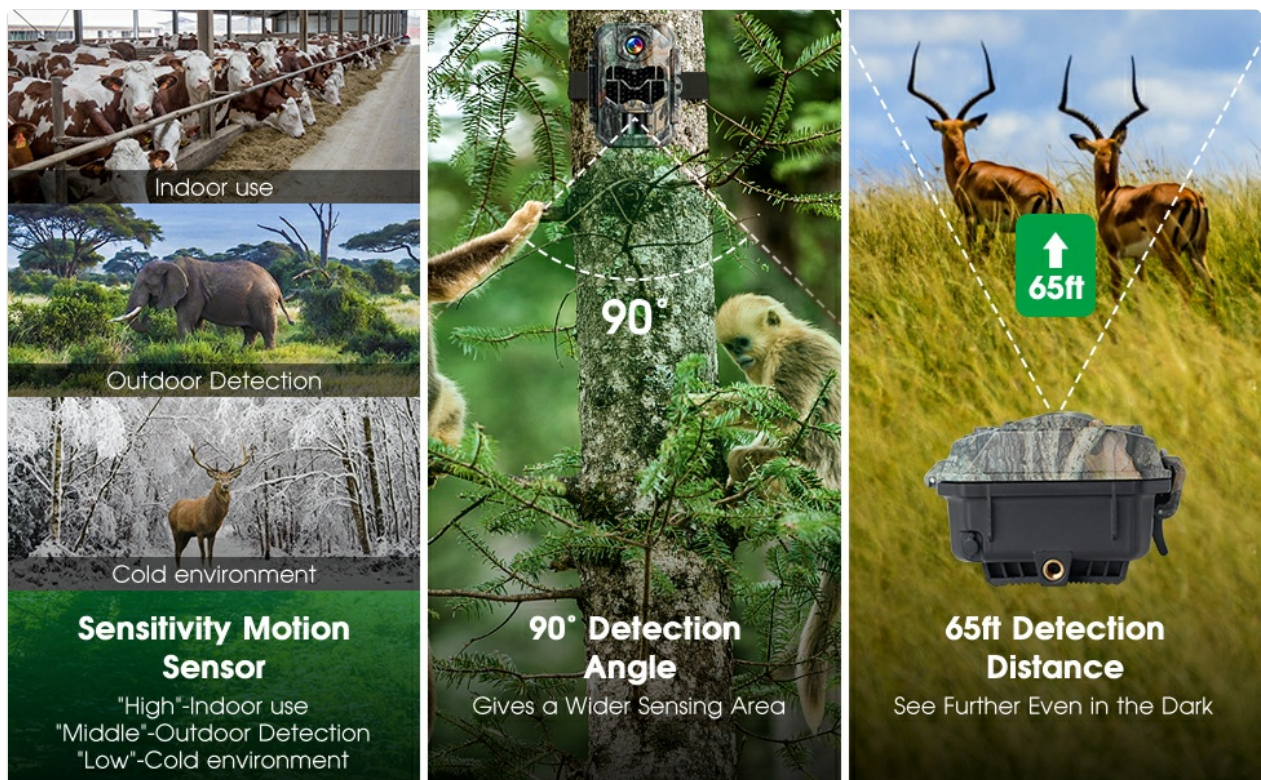


Figure 3: Camera Mounting and 90-Degree Coverage

4. **Power On:** Switch the camera to the "ON" position. The camera will enter test mode or setup mode, allowing you to configure settings.

OPERATING INSTRUCTIONS

Basic Operation

1. **Accessing the Menu:** In setup mode, use the navigation buttons to access the camera's menu. Here you can adjust various settings.
2. **Setting Date and Time:** Navigate to the date/time settings and adjust them accordingly. This ensures accurate timestamps on your photos and videos.
3. **Selecting Capture Mode:** The camera offers three capture modes:
 - **Photo Mode:** Captures still images only.
 - **Video Mode:** Records video clips only.
 - **Photo & Video Mode:** Captures a still photo followed by a video clip.



Figure 4: 4K HD Video Resolution Example



Figure 5: 32MP Image Resolution Example

4. **Adjusting Sensitivity:** The PIR (Passive Infrared) sensor sensitivity can be adjusted based on the environment:
 - "High" for indoor use.
 - "Middle" for outdoor use.
 - "Low" for cold environments.
5. **Trigger Speed:** The camera features a rapid 0.2-second trigger speed to ensure quick capture of moving subjects.



Figure 6: 0.2-Second Trigger Speed

6. **Time Lapse Function:** Enable time-lapse mode to capture images at set intervals. This is useful for observing plant growth, flower blooms, or nesting habits over time.
7. **Night Vision:** The camera automatically switches to night vision mode using 850nm Low Glow IR LEDs in low light conditions, providing clear black and white images and videos without visible flash.

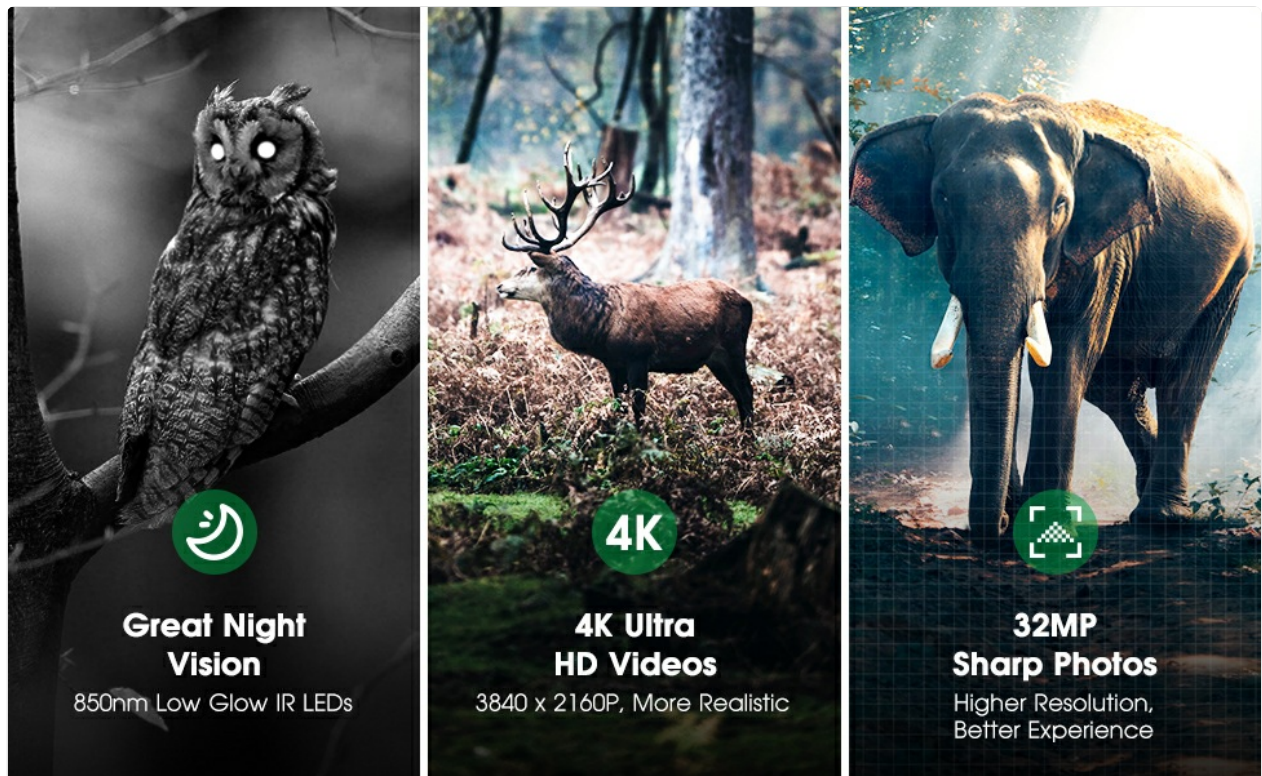


Figure 7: Night Vision Performance

Viewing Files

To view captured photos and videos:

- **On Camera:** Use the camera's built-in screen and navigation buttons to review files directly.
- **Via Computer:** Connect the camera to a computer using the provided USB cable, or remove the SD card and insert it into a card reader. The camera will appear as a removable disk, allowing you to access and transfer files.

MAINTENANCE

- **Cleaning:** Use a soft, dry cloth to clean the camera lens and housing. Avoid abrasive cleaners or solvents.
- **Battery Replacement:** Replace batteries when the low battery indicator appears or when performance degrades. Always use fresh, high-quality AA batteries.
- **SD Card Management:** Regularly back up important files from the SD card to a computer. Format the SD card periodically to maintain optimal performance and prevent data corruption.

- **Storage:** When not in use for extended periods, remove batteries and store the camera in a cool, dry place.
- **Weather Protection:** While the camera is IP66 waterproof, ensure the battery compartment and SD card slot are securely closed to prevent water ingress during heavy rain or snow.

TROUBLESHOOTING

Problem	Possible Cause	Solution
Camera does not power on.	Low or dead batteries; incorrect battery installation; power switch off.	Replace batteries; ensure correct polarity; turn power switch to "ON".
No photos/videos captured.	SD card full or not inserted correctly; incorrect mode selected; PIR sensor blocked or sensitivity too low.	Check/replace SD card; select appropriate capture mode; clear sensor path; increase PIR sensitivity.
Poor image/video quality.	Dirty lens; low light conditions; camera too far from subject; incorrect settings.	Clean lens; ensure adequate lighting or use night vision; adjust camera placement; check resolution settings.
Camera triggers too often or not enough.	PIR sensitivity set too high or too low; environmental factors (e.g., moving branches).	Adjust PIR sensitivity (High/Middle/Low) based on environment.

SPECIFICATIONS

Model Number	PH770-8M
Still Image Resolution	Up to 32 Megapixels
Video Resolution	Up to 4K HD
Trigger Speed	0.2 seconds
Night Vision	850nm Low Glow IR LEDs, 65ft range
Detection Angle	90 degrees
Waterproof Rating	IP66
Operating Temperature	-20°C to 60°C
Storage	SD Card (up to 512GB supported, 32GB included)
Power Supply	4 or 8 x 1.5V AA batteries, or 6V 1.5A DC external power
Dimensions (L x W x H)	10.5 x 6.5 x 3.5 cm
Material	Acrylonitrile Butadiene Styrene

WARRANTY AND SUPPORT

For warranty information or technical support, please refer to the contact details provided with your purchase or visit the official Kejector website. Please note that spare parts availability information is not provided.

