

Manuals+

[Q & A](#) | [Deep Search](#) | [Upload](#)

manuals.plus /

- › [Fszdorj](#) /
- › [Fszdorj 20" Smart Ceiling Fan with Light User Manual](#)

Fszdorj 2-F093

Fszdorj 20" Smart Ceiling Fan with Light User Manual

Model: F093 Black

1. INTRODUCTION

This user manual provides detailed instructions for the installation, operation, and maintenance of your Fszdorj 20" Smart Ceiling Fan with Light. Designed for optimal air circulation and adjustable lighting, this modern fixture enhances comfort and aesthetics in various living spaces. Please read this manual thoroughly before installation and use to ensure safe and efficient operation.



Figure 1: Fszdorj 20" Smart Ceiling Fan with Light

2. SAFETY INFORMATION

To reduce the risk of electric shock, fire, or injury to persons, read and follow all instructions carefully.

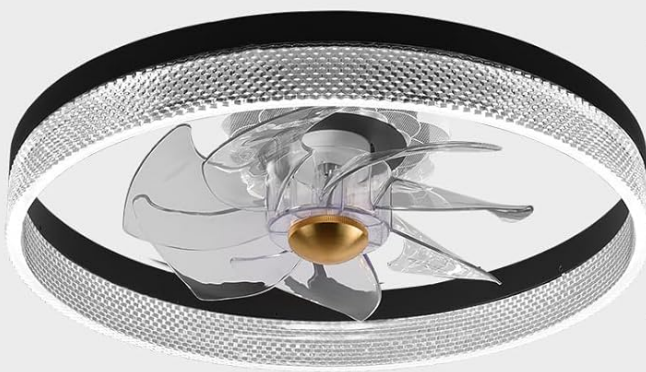
- Always disconnect power at the main circuit breaker before installation or maintenance.
- Installation must be performed by a qualified electrician or a person with sufficient electrical knowledge.
- Ensure the mounting structure can support the weight of the fan.
- Do not insert objects into the path of the fan blades while the fan is operating.
- Keep children and pets away from the fan during operation.
- Use only the remote control and app provided or specified by the manufacturer.
- Do not use the fan in damp or wet locations.

3. SETUP AND INSTALLATION

The Fszdorj Smart Ceiling Fan is designed for straightforward installation with pre-assembled components. Follow these general steps:

1. **Power Disconnection:** Turn off power at the circuit breaker to the fan's location.
2. **Mounting Bracket Installation:** Securely attach the mounting bracket to the ceiling junction box. Ensure it is firmly fixed and can support the fan's weight.
3. **Wiring:** Connect the fan's electrical wires to the household wiring according to local electrical codes. Typically, this involves connecting live, neutral, and ground wires. Refer to the wiring diagram included in the packaging.
4. **Fan Assembly:** Attach the fan body to the mounting bracket. The design features an enclosed structure for safety.
5. **Blade Attachment:** The fan features 7 ABS invisible blades. Ensure they are securely attached if not pre-installed.
6. **Light Installation:** The LED light is integrated. Ensure all connections are secure.
7. **Power Restoration:** Once installation is complete and all connections are secure, restore power at the circuit breaker.

Upgraded features, please watch the video



14.5cm
(5.71inch)

50cm (19.68 inch)

CEILING FAN WITH LIGHT SIZE

Perfect size for multiple installations

EASY TO CLEAN

No need to disassemble for cleaning



Figure 2: Fan Dimensions and Easy Cleaning Feature

The fan measures approximately 19.69 inches (50 cm) in diameter and 5.71 inches (14.5 cm) in height, making it suitable for various room sizes. Its enclosed design allows for easy cleaning without requiring disassembly.

4. OPERATING INSTRUCTIONS

Your Fszdorj Smart Ceiling Fan offers multiple control options for convenience and personalized comfort.

4.1 Control Methods

- **Remote Control:** Use the included remote to adjust fan speed, light brightness, and color temperature.
- **Smartphone App:** Download the dedicated app (scan QR code on remote diagram or visit <http://www.jasonghost.com/smartdevicecontrol/index-en.html>) to control all functions from your smartphone.
- **Wall Switch:** A standard wall switch can control the basic on/off function of the light (switch not included).

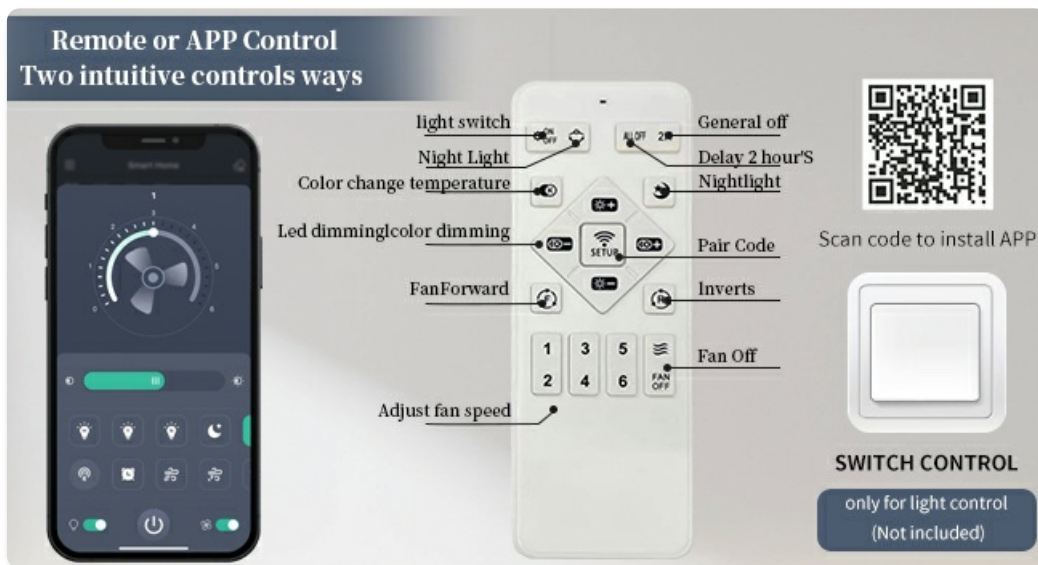


Figure 3: Remote and App Control Interface

The remote control and smartphone app provide comprehensive control over the fan's features, including fan speed, light settings, and directional flow.

4.2 Fan Functions

- **6 Wind Speeds:** Adjust the airflow from a gentle breeze to a strong current to suit your comfort needs.
- **Reversible Motor:** The fan features a reversible DC motor for year-round use.
 - **Summer Mode (Forward Airflow):** Creates a downward airflow, producing a cooling effect.
 - **Winter Mode (Reverse Airflow):** Creates an upward airflow, circulating warm air trapped near the ceiling.
- **Quiet Operation:** The DC motor ensures ultra-quiet operation, typically below 30dB, ideal for bedrooms and quiet spaces.
- **Timer Function:** Set the fan to turn off automatically after 1, 2, 4, or 8 hours.

6 wind speeds
Enjoy the natural wind

Ultra Quiet
<30dB

BRIGHTNESS ADJUSTMENT LIGHT COLOR ADJUSTMENT FAN SPEED SETTINGS SMART DEVICE CONTROL

REVERSE FUNCTION TIMING FUNCTION QUICK INSTALL EASY CLEAN

The image features a ceiling fan with a glowing circular light ring and a woman sleeping peacefully in a bed. The fan has six blades and a central hub. The background shows a window with potted plants and a night sky. The text '6 wind speeds' and 'Enjoy the natural wind' is prominently displayed. A circular icon indicates 'Ultra Quiet <30dB'. Below the fan, there are eight circular icons representing various functions: brightness adjustment, light color adjustment, fan speed settings, smart device control, reverse function, timing function, quick install, and easy clean.

Figure 4: Summer and Winter Airflow Modes

The reversible motor allows for efficient air circulation, keeping you comfortable in both warm and cool seasons.



6 wind speeds Enjoy the natural wind



Figure 5: Quiet Operation and Key Features

Enjoy a peaceful environment with the fan's quiet operation, perfect for relaxation and sleep.

4.3 Lighting Functions

- **Dimmable LED:** Adjust light brightness from 0% to 100% to create the desired ambiance.
- **Adjustable Color Temperature:** Seamlessly transition between warm white (3000K), neutral white (4500K), and cool white (6500K) lighting.
- **Night Light Function:** A separate 4-watt night light provides soft illumination.
- **Smart Memory Function:** The fan remembers your last light and fan settings, ensuring consistent comfort upon next use.
- **Separate Control:** Fan and light functions can be operated independently.



Figure 6: Dimmable Light and Color Temperature Adjustment

Customize your lighting experience with stepless dimming and a wide range of color temperatures.



Upgraded features, please watch the video



Figure 7: Night Lighting Color Options

Beyond standard white light, the fan offers unique night lighting colors to enhance room ambiance.

5. MAINTENANCE

Regular maintenance ensures the longevity and optimal performance of your ceiling fan.

- **Cleaning:** The enclosed design allows for easy cleaning. Simply wipe the exterior surfaces with a soft, damp cloth. Do not use abrasive cleaners or solvents. No need to disassemble for cleaning.
- **Blade Inspection:** Periodically check that all fan blades are securely attached.
- **Electrical Connections:** Ensure all electrical connections remain secure. If you notice any loose wires or unusual behavior, disconnect power and consult a qualified electrician.

6. TROUBLESHOOTING

If you encounter issues with your Fszdorj Smart Ceiling Fan, refer to the following common problems and solutions:

Problem	Possible Cause	Solution
Fan does not operate.	No power; loose wiring; remote control battery low.	Check circuit breaker. Ensure all wiring connections are secure. Replace remote control batteries.
Light does not turn on.	Loose wiring; LED failure; remote control issue.	Check wiring connections. If LED is faulty, contact customer support. Ensure remote is paired and batteries are good.
Fan wobbles.	Loose mounting; unbalanced blades.	Ensure mounting bracket is securely fastened. Check that all blades are tightly screwed.
Remote control or App not responding.	Batteries dead; not paired; interference.	Replace batteries. Re-pair remote/app with the fan (refer to pairing instructions in packaging). Reduce interference from other devices.
Fan is noisy.	Loose screws; motor issue.	Check and tighten all screws. If noise persists, contact customer support.

7. SPECIFICATIONS

Key technical specifications for the Fszdorj 20" Smart Ceiling Fan with Light:

- **Brand:** Fszdorj
- **Model Name:** 2-F093
- **Product Dimensions:** 19.69"L x 19.69"W x 5.71"H (50cm x 50cm x 14.5cm)
- **Material:** Iron (frame), Acrylic (shade)
- **Power Source:** DC
- **Voltage:** 110 Volts
- **Wattage:** 80 watts (main lamp), 4 watts (night light)
- **Light Source Type:** LED
- **Light Color Temperature:** 3000K-6500K (Adjustable)
- **Brightness:** 6500 Lumen
- **Fan Speeds:** 6 levels
- **Noise Level:** <30dB
- **Control Method:** App, Remote Control
- **Installation Type:** Flush Mount
- **Included Components:** Remote Control



Figure 8: Product Specifications Overview

This overview highlights the fan's power requirements, control options, recommended use area, and quiet operation.



Figure 9: DC Copper Motor and Wind Speed Characteristics

The fan is equipped with a durable and efficient DC copper motor, providing powerful yet quiet airflow across its 6 speed settings.

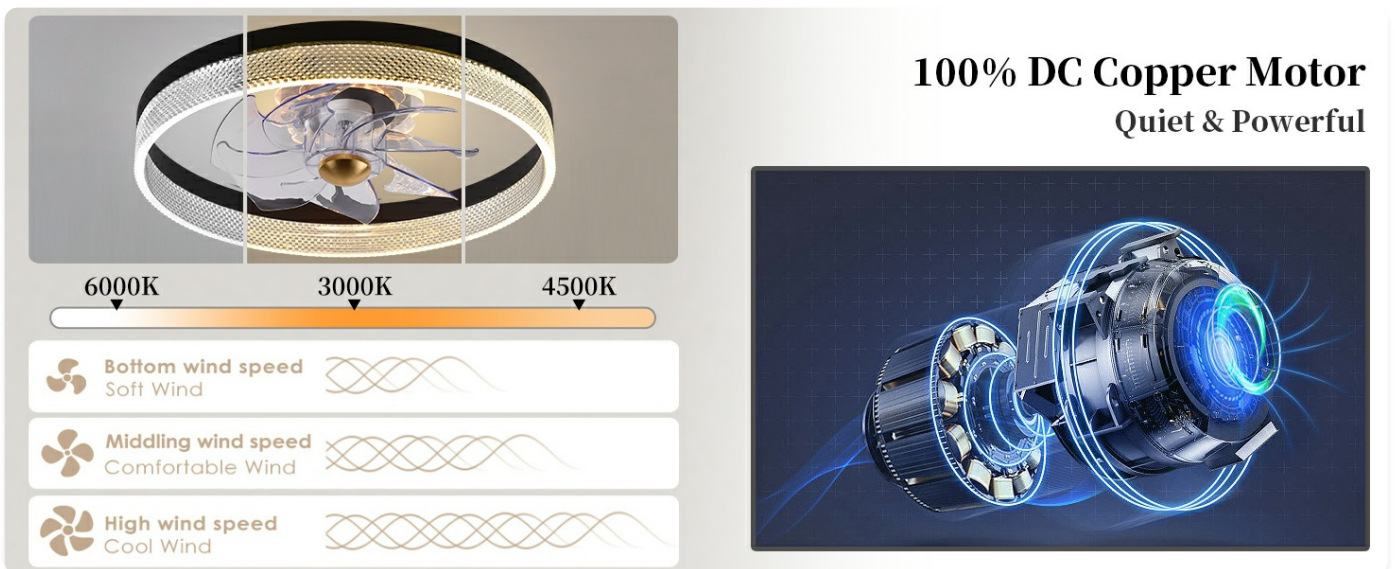


Figure 10: Component Quality and Design

The fan features high-quality materials such as a transparent acrylic lampshade, efficient lumen light strips for uniform illumination, and a robust iron frame for durability.

8. WARRANTY AND SUPPORT

Fszdorj is committed to providing quality products and customer satisfaction.

- **Warranty:** This product comes with a 2-YEAR WARRANTY.
- **Customer Support:** For any questions, issues, or assistance, please contact our professional online after-sales team. We are available 24/7 to ensure a smooth and satisfying experience.
- **Contact:** Please reach out via Amazon message for support.

MODERN CEILING FAN

Convenient Function

- 6 wind Speeds & Natural Wind
- Reverse Function
- Light Memory
- 2H Timing
- Night Light
- Fan and Light Work Separately



Figure 11: 2-Year Warranty and Convenient Functions

Fszdorj stands by its products with a 2-year warranty, ensuring peace of mind for your purchase.