

[Manuals.plus](#) /

> [Metal Earth](#) /

> Metal Earth Avro Lancaster Bomber 3D Metal Model Kit Instruction Manual MMS067-T

Metal Earth MMS067-T

**Metal
Earth.**

Metal Earth Avro Lancaster Bomber

3D METAL MODEL KIT INSTRUCTION MANUAL (MODEL: MMS067-T)

Introduction

This manual provides comprehensive instructions for assembling your Metal Earth Avro Lancaster Bomber 3D Metal Model Kit. This kit allows you to construct a detailed replica of the Avro Lancaster Bomber using precision-etched steel sheets. No glue or solder is required for assembly.

The assembly process involves carefully detaching pieces from metal sheets, bending tabs, and inserting them into corresponding slots. Patience and attention to detail are key to a successful build.

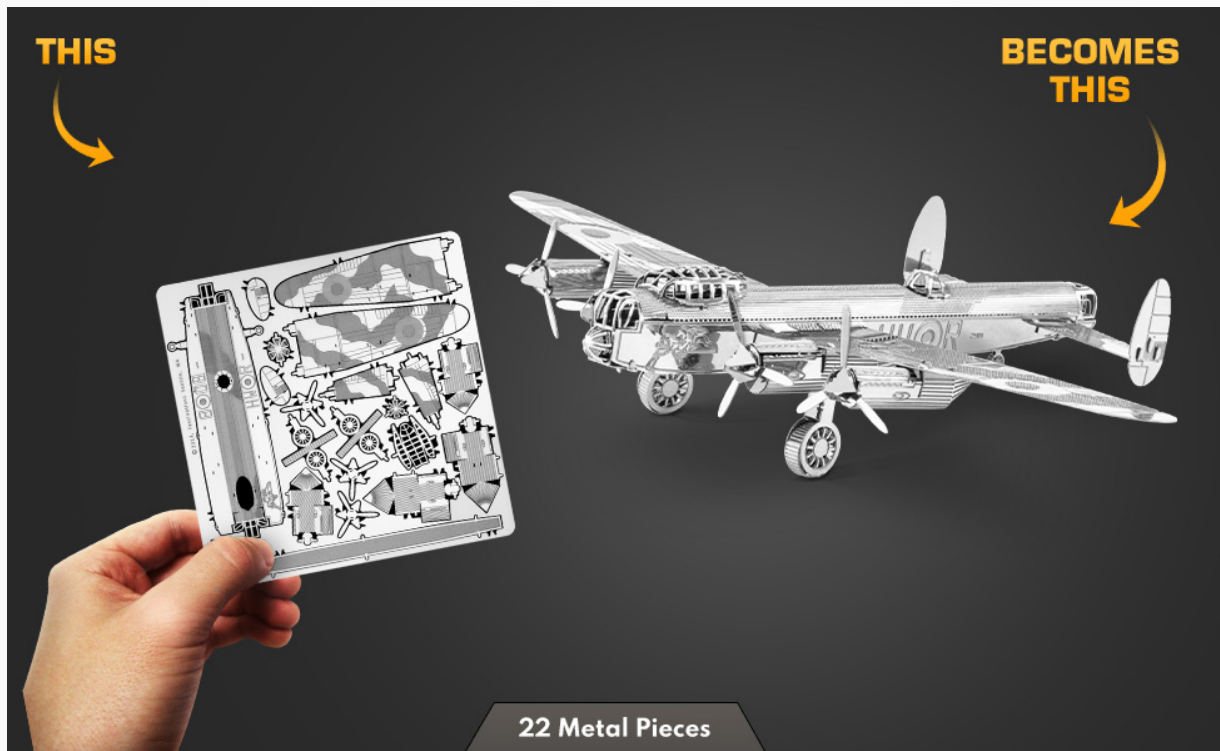


Image: Illustration showing a flat metal sheet transforming into a completed 3D model of the Avro Lancaster Bomber, demonstrating the kit's concept.

Safety Information

Warning: This kit contains small parts and sharp edges. Use caution during assembly. Not suitable for children under 14 years of age due to potential choking hazards and sharp components.

Setup

What's Included:

- One (1) Metal Earth Avro Lancaster Bomber metal sheet.
- Illustrated instructions.
- One (1) pair of specialized tweezers.

Recommended Tools (Not Included, except tweezers):

- **Clippers:** For detaching parts from the metal sheets cleanly.
- **Flat Nose Pliers:** Useful for bending larger tabs and flat surfaces.
- **Needle Nose Pliers:** Ideal for intricate bends and twists in tight spaces.

Metal Earth

3D METAL MODEL KITS

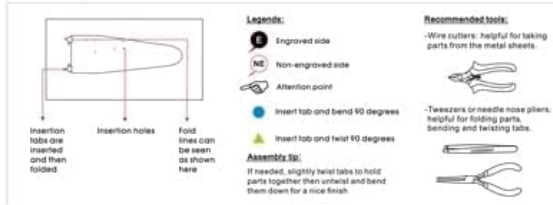


Lancaster Bomber
Item No. MMS067

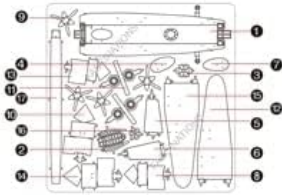
360°
view



It is highly recommended that you visit www.metal-earth.com/360/mms067 to see the completed model before assembling your own.

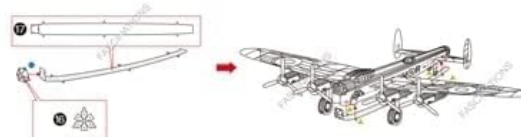
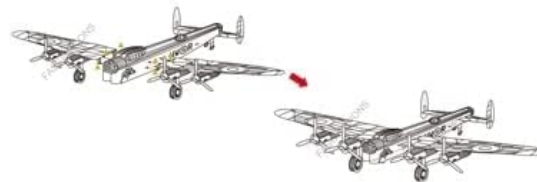
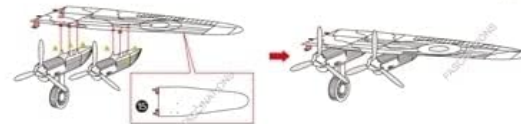
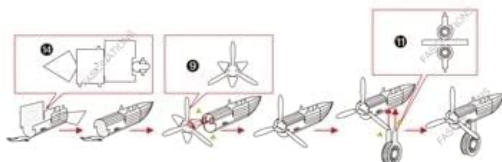
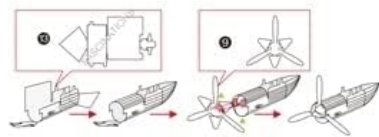
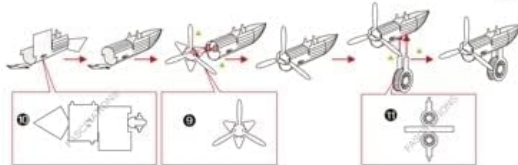
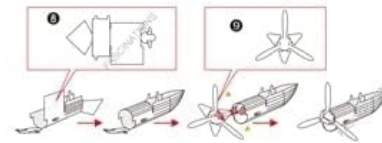
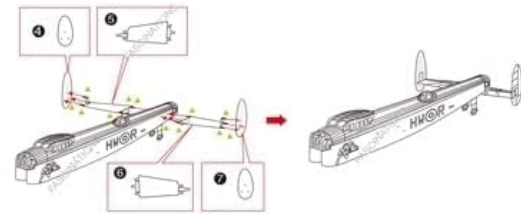
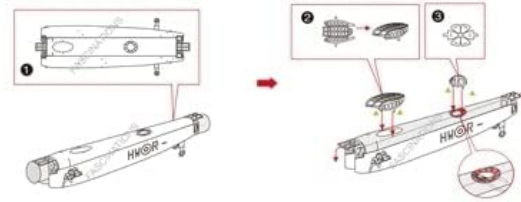


Metal sheet



Warning: In order to avoid possible injury from sharp edges, please carefully discard the metal sheet after parts have been removed.

Assembly Flow Chart



Fascinations
©2013 Fascinations Seattle, WA
www.metal-earth.com

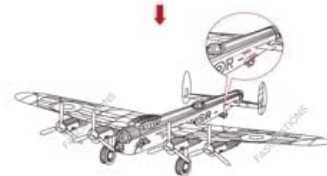


Image: A pair of black precision tweezers, included with the kit, essential for handling small metal parts.

Preparation:

1. Ensure you have a clean, well-lit workspace.
2. Familiarize yourself with the instruction diagrams before beginning.
3. Identify all parts on the metal sheet and their corresponding numbers in the instructions.

Operating (Assembly Instructions)

Follow the numbered steps in the provided illustrated instructions carefully. The general process involves:

1. **Detaching Parts:** Gently twist or use clippers to detach each numbered part from the metal sheet. Be careful not to bend or damage the parts. Discard the metal sheet after all parts are removed.
2. **Bending Tabs:** Tabs are used to connect pieces. Bend tabs to the indicated angle (usually 90 degrees) using tweezers or pliers.

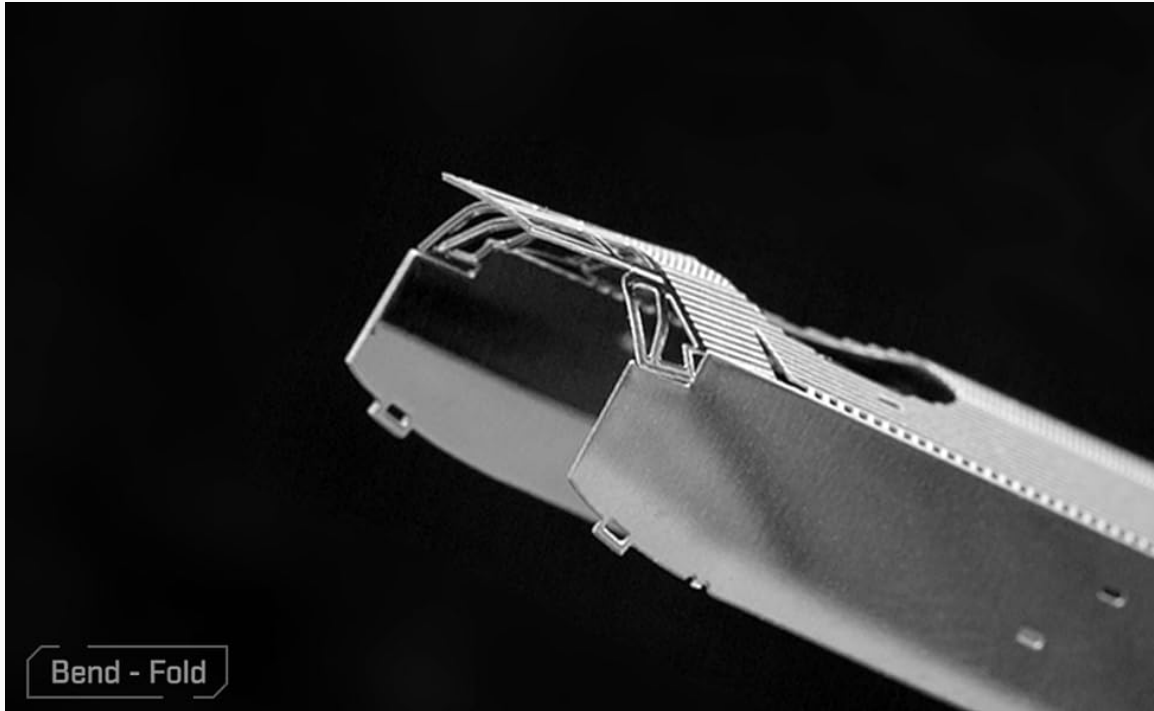


Image: A close-up view of a metal model part being carefully bent along a designated fold line, illustrating the 'Bend - Fold' technique.

3. **Connecting Parts:** Insert the bent tabs into the corresponding slots (holes) on another piece.

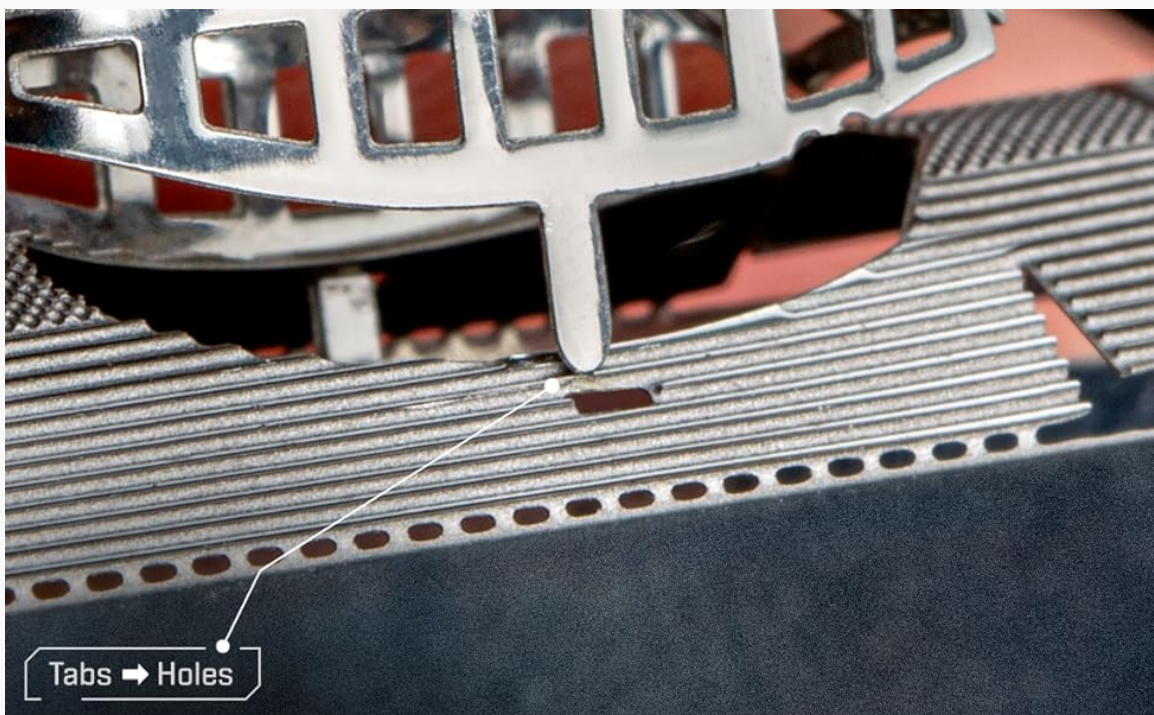


Image: A detailed shot showing a small metal tab being inserted into a precisely cut slot or hole on another metal piece, demonstrating the 'Tabs -> Holes' connection method.

4. **Securing Connections:** Once a tab is inserted, twist it 90 degrees to secure the connection. This locks the pieces together without the need for adhesives.

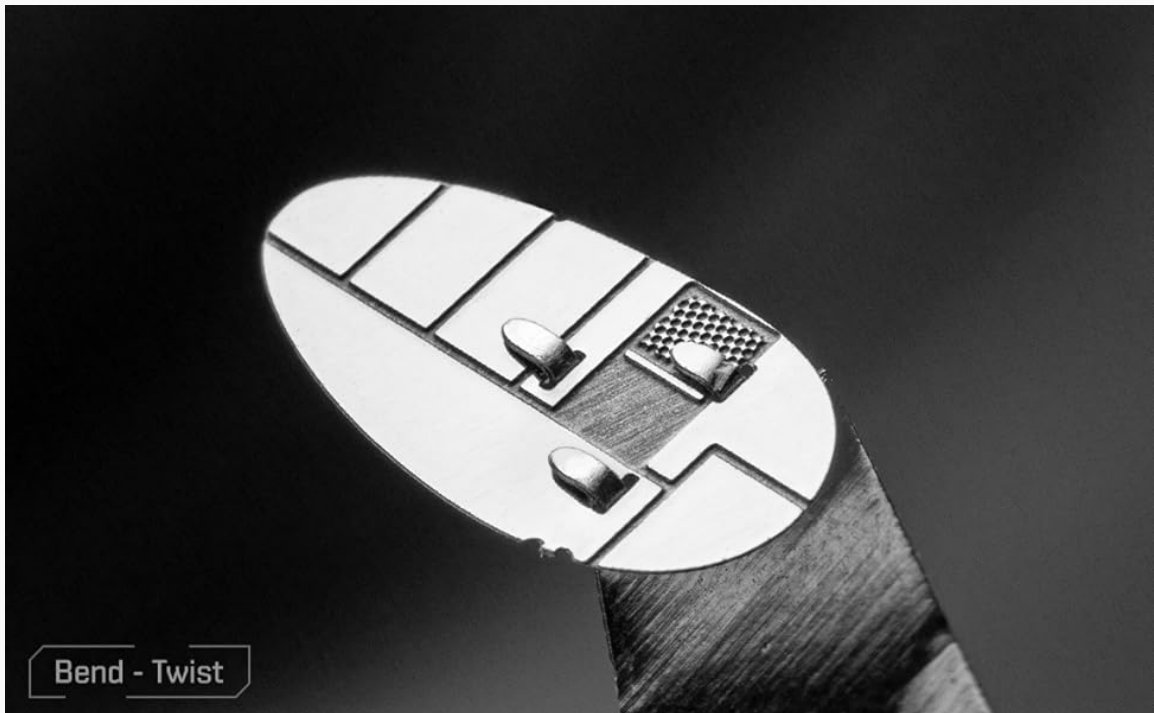


Image: A close-up of a metal tab being twisted with a tool after insertion, securing the connection between two model parts using the 'Bend - Twist' technique.

Refer to the detailed assembly flow chart and diagrams on the instruction sheet for specific steps for the Avro Lancaster Bomber model.



Image: A multi-page instruction sheet for the Metal Earth Avro Lancaster Bomber, displaying detailed diagrams for each assembly step, part identification, and connection methods.

Maintenance

Once assembled, your Metal Earth model requires minimal maintenance. To keep your model in optimal condition:

- **Cleaning:** Dust the model gently with a soft, dry cloth or a soft brush. Avoid using abrasive cleaners or liquids, as they may damage the metal finish.
- **Handling:** Handle the model carefully to prevent bending or breaking delicate parts.
- **Display:** Display your model in a stable location away from direct sunlight, excessive heat, or humidity to preserve its appearance.

Troubleshooting

- **Difficulty Detaching Parts:** If a part is difficult to detach, use a pair of small clippers to snip the connection points cleanly. Avoid forcing parts, as this can cause bending or damage.
- **Tabs Not Fitting:** Ensure tabs are bent to the correct angle (usually 90 degrees) and that you are inserting them into the correct corresponding holes. Use tweezers to gently adjust the tab's angle if needed.
- **Parts Not Aligning:** Double-check the instruction diagrams. Sometimes a slight adjustment to a bend or twist can help parts align properly. Do not apply excessive force.
- **Bent or Damaged Parts:** If a part becomes slightly bent, carefully use flat-nose pliers to straighten it. If a part is severely damaged, contact customer support for possible replacement options.

Specifications

Feature	Detail
Brand	Metal Earth
Model Name	Avro Lancaster Bomber
Item Model Number	MMS067-T
Material	Steel
Assembled Dimensions (L x W x H)	5.20 x 3.46 x 1.02 inches
Number of Sheets	1
Difficulty Level	Moderate
Recommended Age	14 years and up

Warranty and Support

Metal Earth products are designed for quality and precision. For any issues with missing or defective parts, please refer to the manufacturer's official website for warranty information and customer support contact details.

You can find more information and support at the official Metal Earth website www.metalearth.com

For a 360-degree view of the assembled model, visit: <http://www.metalearth.com/360/MMS067>