



Manuals.plus /

› **LELO** /

› LELO DOT Clitoral Pinpoint Vibrator User Manual

LELO DOT

LELO DOT Clitoral Pinpoint Vibrator User Manual

1. INTRODUCTION

The LELO DOT is a clitoral pinpoint vibrator designed for precise stimulation. It features a soft, bendable tip and utilizes Infinite Loop™ technology for a unique elliptical motion. This manual provides essential information for the safe and effective use of your LELO DOT.

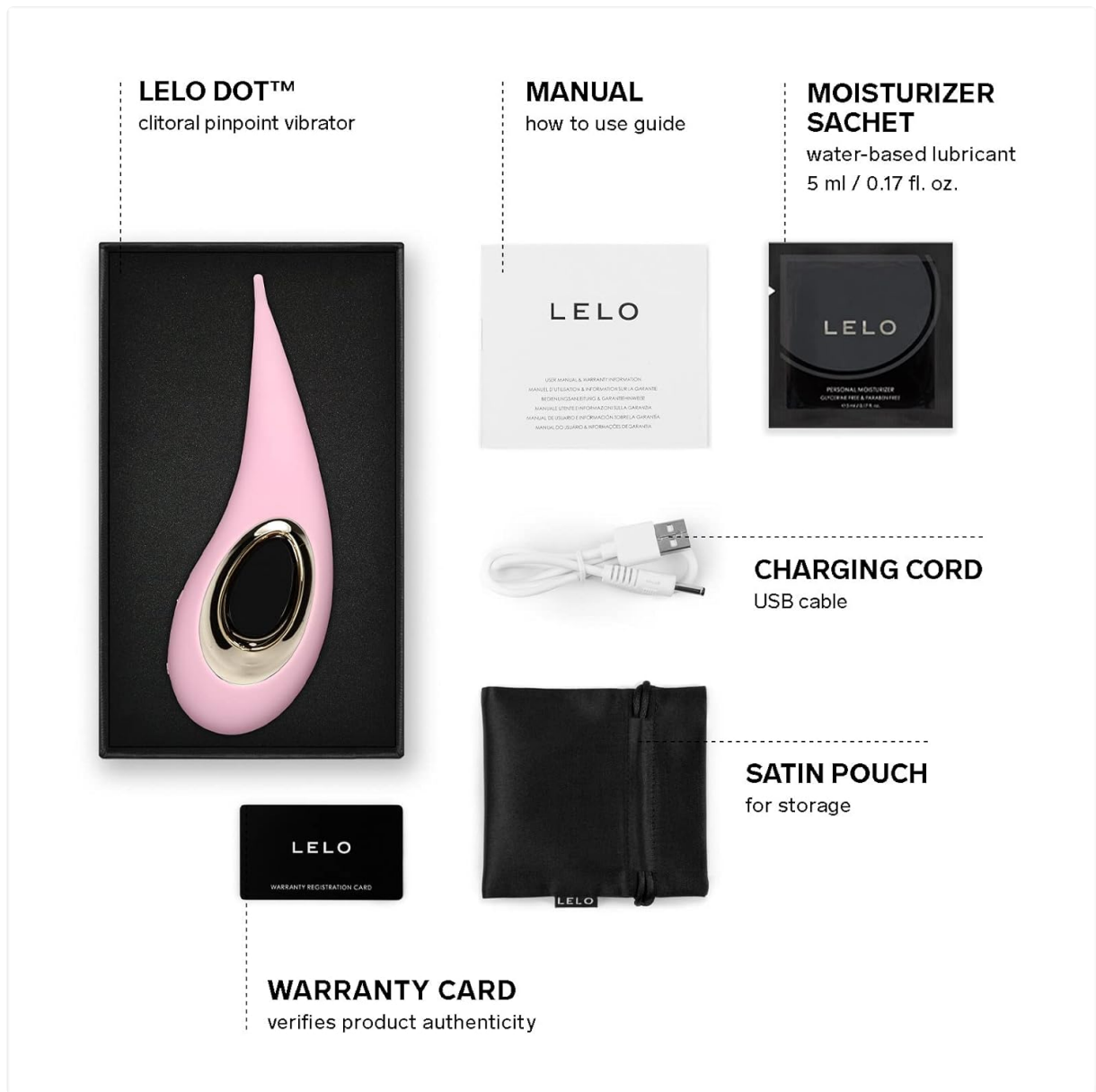


Image 1.1: The LELO DOT vibrator, charging cable, lubricant sachet, satin pouch, and warranty card included in the product packaging.

2. PRODUCT FEATURES

- **Clitoral Pinpoint Vibrator:** Designed for gentle and precise teasing of external erogenous zones.
- **Captivating Figure Eight Massage:** The Infinite Loop™ technology provides a constant, elliptical stimulation over the clitoris.
- **8 Vibration Settings:** Offers eight distinct vibration patterns with adjustable intensities.
- **Signature Swedish Design:** Crafted from flexible, body-safe silicone for a smooth touch and durability.
- **Waterproof & USB Rechargeable:** IPX7 certified, suitable for use in the bath or shower, and easily rechargeable via USB.

Features



INFINITE LOOP™ TECHNOLOGY

enjoy multiple climaxes without numbness or saturation



8 SETTINGS

from a teasing murmur to a satisfying pulse



LONG-LASTING CHARGE

longer time for pleasure



SCULPTED FOR YOUR PLEASURE

fits your body like a glove



WATERPROOF DESIGN

perfect for the bath and shower



EXTRA-SOFT SILICONE

ultra-smooth premium silicone that feels warm to the touch



Image 2.1: The LELO DOT vibrator showcasing its ergonomic design and highlighting features such as Infinite Loop™ Technology, 8 settings, long-lasting charge, sculpted design, waterproof capability, and extra-soft silicone material.

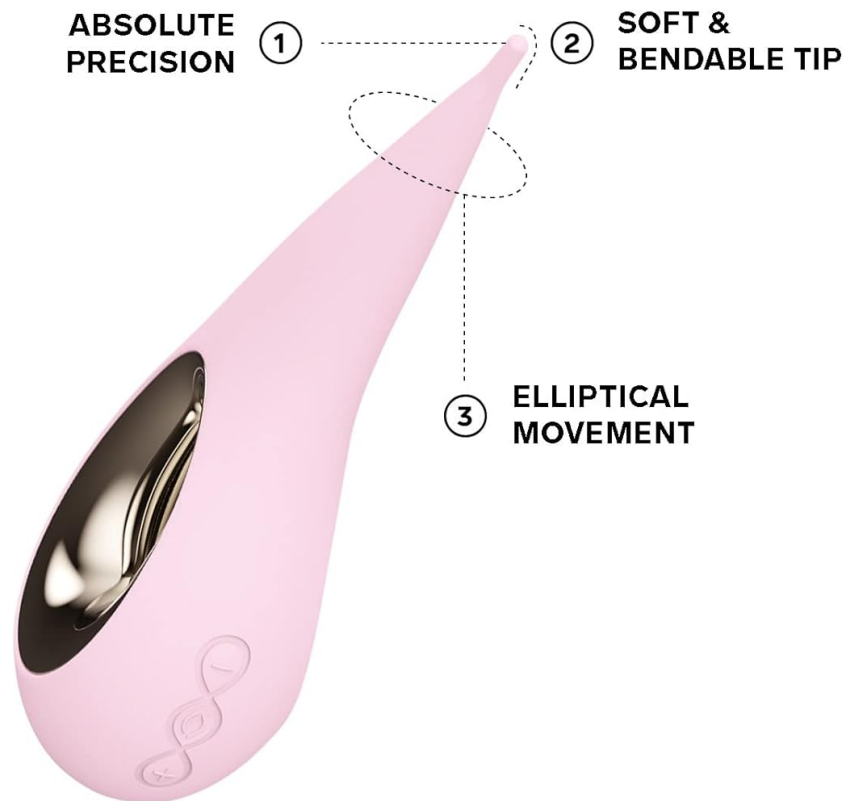


Image 2.2: A detailed diagram of the LELO DOT, indicating its absolute precision, soft and bendable tip, and elliptical movement for targeted stimulation.

3. GETTING STARTED (SETUP)

3.1 Initial Charge

Before first use, fully charge your LELO DOT for 2 hours. Connect the provided USB charging cable to the device's charging port and a USB power source. The LED lights will blink to indicate battery level during charging.

3.2 Activation

Press the **(O)** button to turn the device on.

4. OPERATION

4.1 Power On/Off

- To turn on: Press the **(O)** button.
- To turn off: Press and hold the **(O)** button for 3 seconds.

4.2 Changing Pleasure Settings

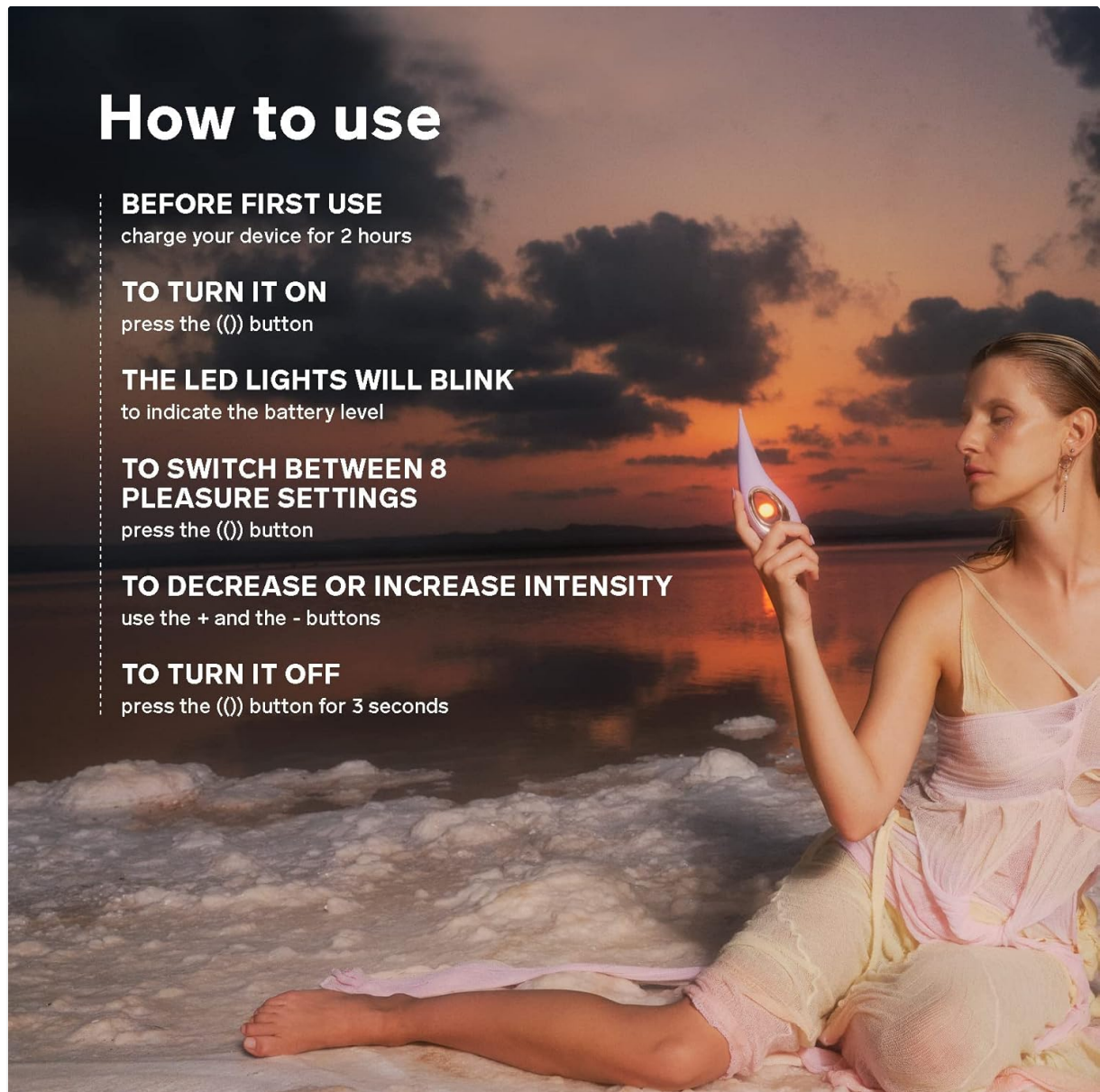
Press the **(O)** button to cycle through the 8 available pleasure settings.

4.3 Adjusting Intensity

Use the **(+)** and **(-)** buttons to increase or decrease the vibration intensity within each setting.

4.4 Usage Guidance

The LELO DOT's soft, bendable tip and elliptical movement are designed for targeted stimulation. Experiment to find your preferred areas and settings for optimal experience.



How to use

BEFORE FIRST USE

charge your device for 2 hours

TO TURN IT ON

press the **(O)** button

THE LED LIGHTS WILL BLINK

to indicate the battery level

TO SWITCH BETWEEN 8 PLEASURE SETTINGS

press the **(O)** button

TO DECREASE OR INCREASE INTENSITY

use the **+** and the **-** buttons

TO TURN IT OFF

press the **(O)** button for 3 seconds

Image 4.1: Visual guide on how to use the LELO DOT, including charging, turning on, LED light indications, switching settings, and adjusting intensity.

5. CARE AND MAINTENANCE

5.1 Cleaning

The LELO DOT is IPX7 certified waterproof. Clean the device thoroughly after each use with warm water and a toy cleaner or mild soap. Rinse well to remove all residue.

5.2 Drying

Allow the device to air dry completely before storage.

5.3 Storage

Store your LELO DOT in the provided satin pouch in a clean, dry place, away from direct sunlight and extreme temperatures.

6. TROUBLESHOOTING

6.1 Device Not Turning On

- Ensure the device is fully charged. Connect it to the USB charging cable and allow it to charge for at least 2 hours.
- If the device still does not turn on after charging, contact LELO customer support.

6.2 Short Battery Life

- Ensure the device is fully charged before each use.
- Battery performance can vary with usage patterns and age. If you experience significantly reduced battery life, contact LELO customer support.

6.3 Vibrations are Weak or Inconsistent

- Check the battery level and recharge if necessary.
- Ensure the device is clean and free from debris that might interfere with its function.
- If the issue persists, contact LELO customer support.

7. SPECIFICATIONS

Product Dimensions	2.36 x 1.81 x 6.5 inches; 3.46 ounces
Item Model Number	8892
Batteries	1 Lithium Polymer battery (included)
Material	Silicone
Brand	LELO
Model Name	DOT
Style	Vibrator
Waterproof Rating	IPX7 Certified

8. WARRANTY AND SUPPORT

LELO products are designed for quality and durability. The LELO DOT comes with a 1-year warranty and a 10-year quality guarantee. For warranty claims, technical support, or any other inquiries, please refer to the official LELO website or contact their customer service directly. Keep your warranty registration card for future reference.

