

## Manuals+

[Q & A](#) | [Deep Search](#) | [Upload](#)

[manuals.plus](#) /

› [APPASO](#) /

› [APPASO 3-Way Kitchen Faucet Instruction Manual \(Model APS333BN-NEW\)](#)

## APPASO APS333BN-NEW

# APPASO 3-Way Kitchen Faucet

Model: APS333BN-NEW

Brand: APPASO

## INTRODUCTION

This instruction manual provides detailed guidance for the installation, operation, and maintenance of your APPASO 3-Way Kitchen Faucet, Model APS333BN-NEW. This innovative faucet combines standard hot and cold tap water with a dedicated filtered drinking water outlet, offering convenience and efficiency in your kitchen.

## PRODUCT OVERVIEW AND FEATURES

The APPASO 3-Way Kitchen Faucet is designed for modern kitchens, providing a versatile water solution. Key features include:

- **High Quality Construction:** Made from 304 stainless steel with a brushed nickel plating, ensuring resistance to corrosion and rust.
- **3-in-1 Functionality:** Delivers hot water, cold water, and filtered drinking water from a single faucet, eliminating the need for additional tap holes.
- **360° Swivel Spout:** The faucet spout rotates a full 360 degrees, providing flexible reach for large or double sinks.
- **Dual Handle Design:** Independent handles for tap water (hot/cold) and filtered drinking water ensure easy and precise control.
- **Durable Ceramic Cartridge:** Equipped with a high-grade ceramic cartridge for drip-free performance and long-term durability.
- **Removable Aerator:** Features a removable dual aerator for easy cleaning and maintenance, contributing to water saving and reduced splashing.
- **7-Layer Plated Finish:** A multi-layer plating process provides an anti-fingerprint and anti-corrosion surface.

# 3 IN 1 KITCHEN TAP



**COLD WATER**



**HOT WATER**

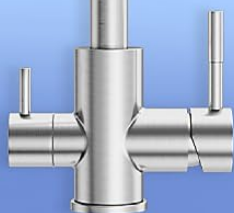
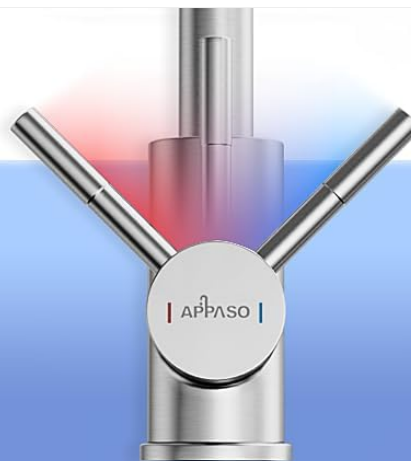


**DRINKING WATER**

This image illustrates the faucet's three functions: delivering cold water for washing vegetables, hot water for washing dishes, and purified drinking water.



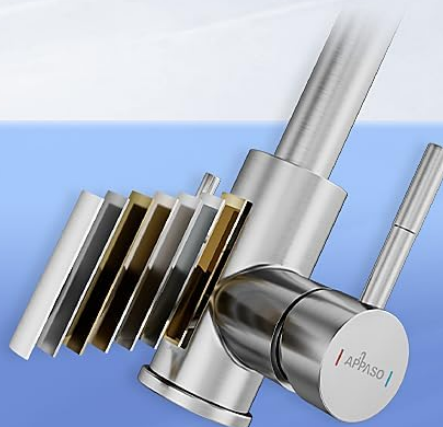
**COLD & HOT**



**360° ROTATABLE**



**7-LAYER  
PLATED FINISH**



This graphic details the faucet's key attributes, including its full 360-degree swivel capability, integrated hot and cold water supply, and durable 7-layer plated finish.



This graphic shows the cross-section of the faucet's material, detailing its seven protective layers that provide anti-fingerprint and anti-corrosion benefits.

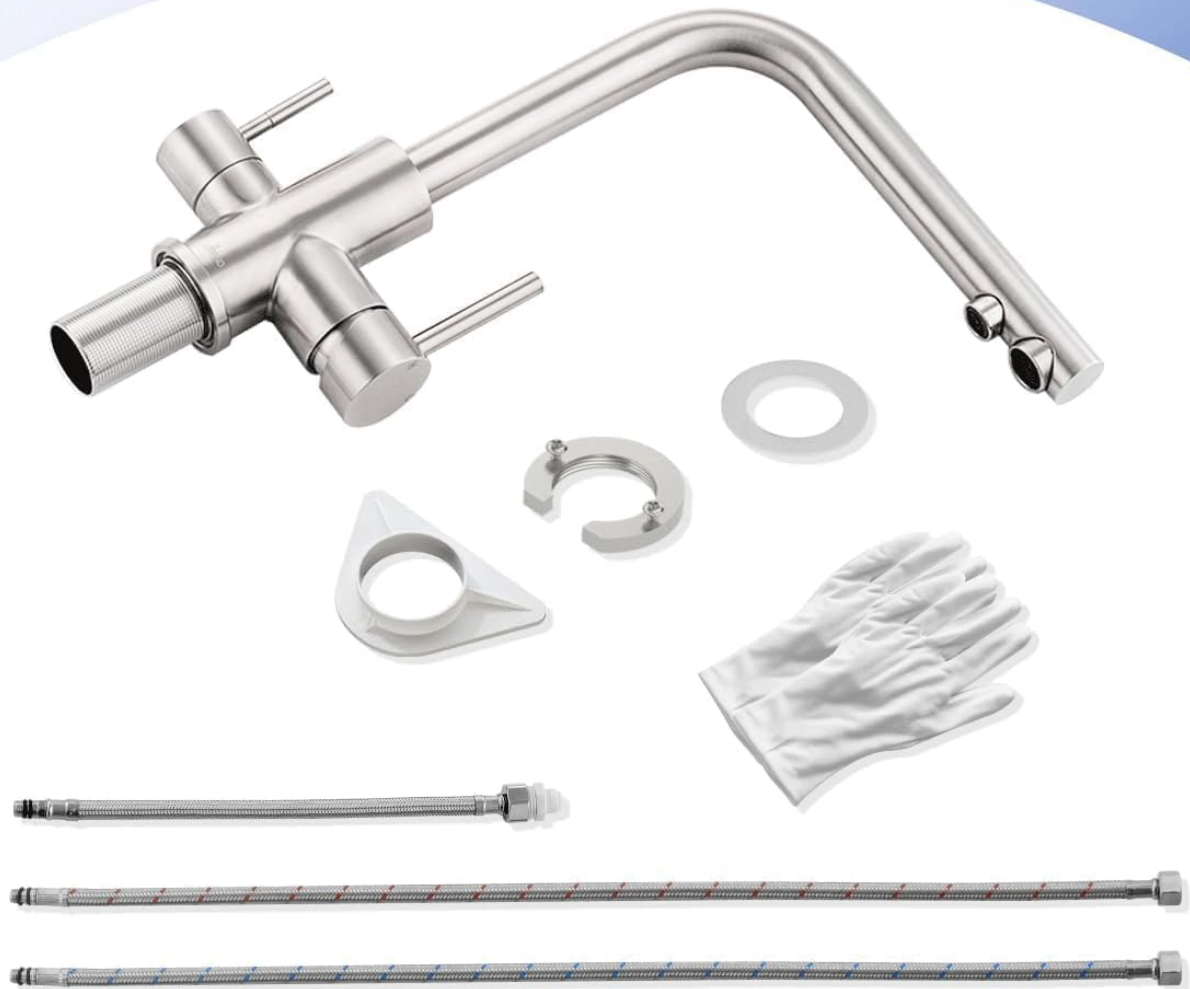
## SETUP AND INSTALLATION

---

Before beginning installation, ensure you have all necessary components and tools. It is recommended to consult a professional plumber if you are unsure about any steps.

### Package Contents:

# PACKAGING ACCESSORIES



## APPA SO KITCHEN TAP

An image displaying all components included in the package: the main faucet body, various mounting nuts and washers, a counterweight, and three flexible supply hoses.

### Installation Steps:

1. **Prepare the Mounting Hole:** Ensure your sink or countertop has a mounting hole with a diameter between 3.2-3.6 cm (1 1/4 - 2 1/5 inches). The maximum countertop thickness should not exceed 4 cm (1 3/5 inches).
2. **Arrange Accessories:** Place the rubber washer and metal washer onto the faucet's threaded pipe from underneath the sink. Secure with the fixing nut.
3. **Connect Water Lines:** Connect the hot, cold, and filtered water supply hoses to the corresponding inlets on the faucet. The hot and cold lines typically use 3/8" standard pipe connections. The filtered water line connects

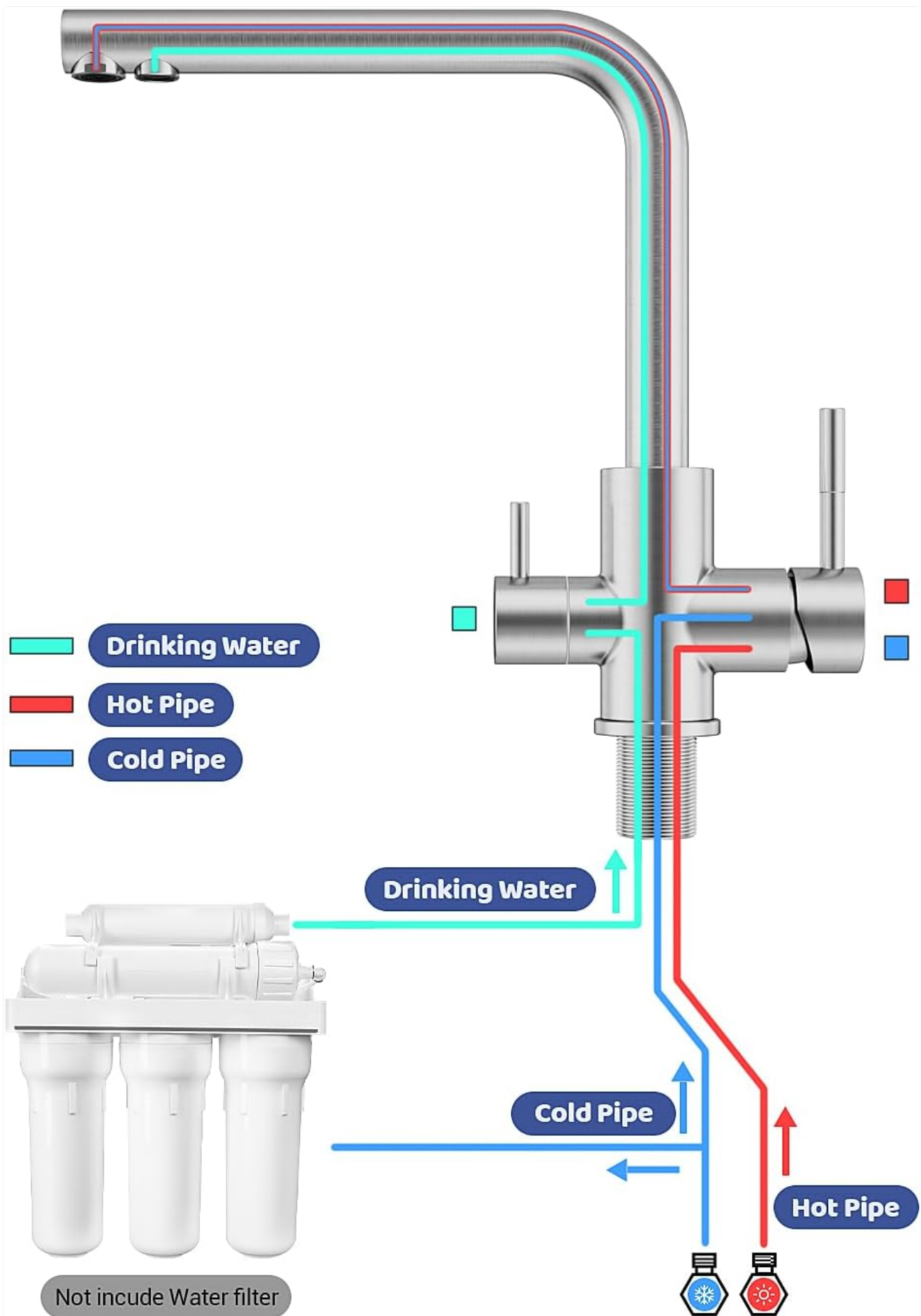
separately. Ensure all connections are tight to prevent leaks.

4. **Test for Leaks:** Once all connections are secure, slowly turn on the main water supply and check all connections for any signs of leakage. Run both tap water and filtered water to ensure proper flow.



A visual guide detailing the four main installation steps: checking the mounting hole dimensions, arranging accessories, connecting and tightening pipes, and finally, running water to check for leaks.

**Water Line Diagram:**



A schematic diagram illustrating how the drinking water line, hot water pipe, and cold water pipe connect to the 3-way kitchen faucet, with an optional water filter shown below.

## OPERATING INSTRUCTIONS

Your APPASO 3-Way Kitchen Faucet features two distinct handles for controlling water flow:

## CLEAR AT A GLANCE



This diagram clearly labels the faucet's main parts: the separate outlets for filtered and tap water, the dedicated handle for filtered drinking water, and the handle for controlling hot and cold tap water.

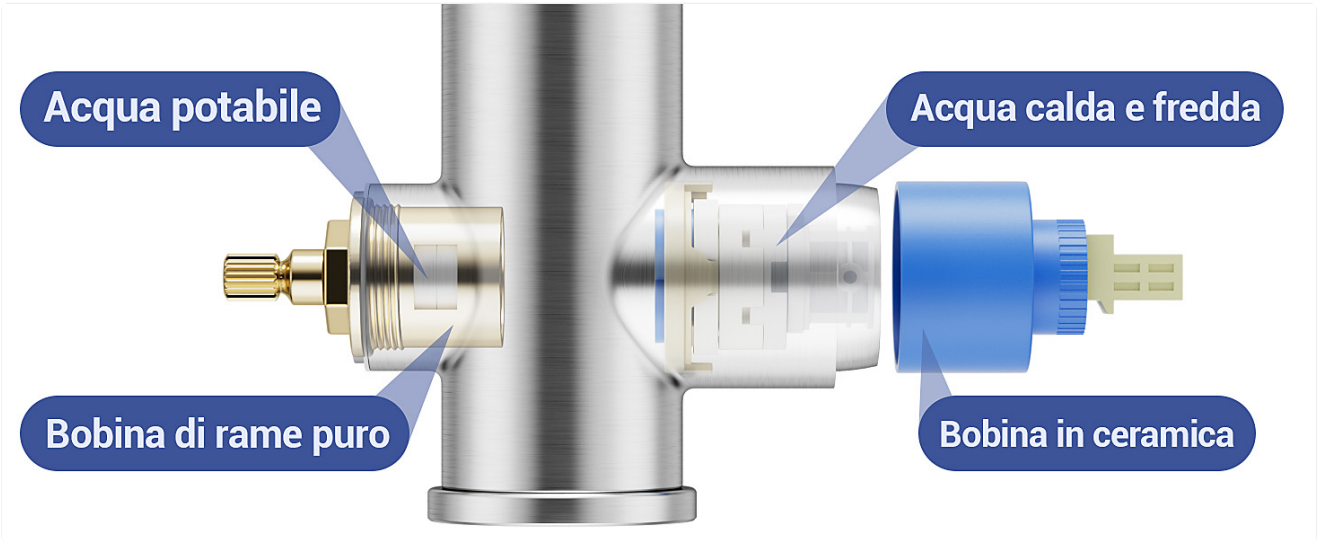
- **Hot/Cold Tap Water:** Use the main handle (typically on the right) to control the flow and temperature of regular tap water. Move the handle forward for cold water and backward for hot water.
- **Filtered Drinking Water:** Use the smaller handle (typically on the left) to dispense filtered drinking water. This handle operates independently from the hot/cold tap water.

The faucet's spout can be rotated 360 degrees to direct water flow as needed for various tasks in your sink.

## MAINTENANCE

Regular maintenance will ensure the longevity and optimal performance of your APPASO faucet.

- **Cleaning the Finish:** Clean the brushed nickel finish with a soft cloth and mild soap or a non-abrasive cleaner. Avoid harsh chemicals, abrasive pads, or polishes that can damage the finish.
- **Aerator Cleaning:** The dual aerator can be removed for cleaning. Periodically unscrew the aerator from the spout and rinse any debris or mineral buildup under running water. Reinstall securely.
- **Leak Checks:** Periodically inspect all connections under the sink for any signs of leaks. Tighten connections if necessary.



This image highlights the faucet's removable dual aerator, which helps save water and reduces splashes. It also shows a wrench, indicating easy removal for cleaning or replacement.

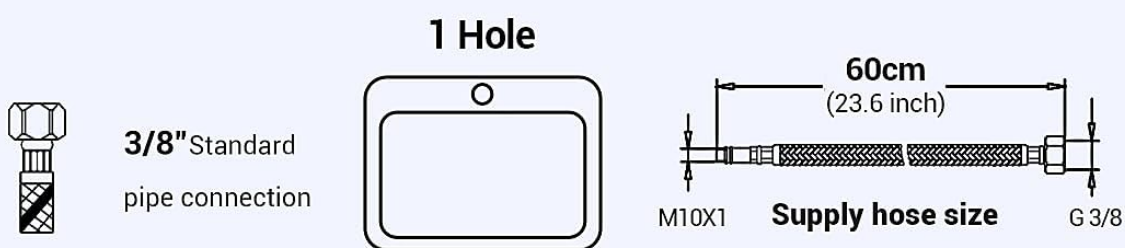
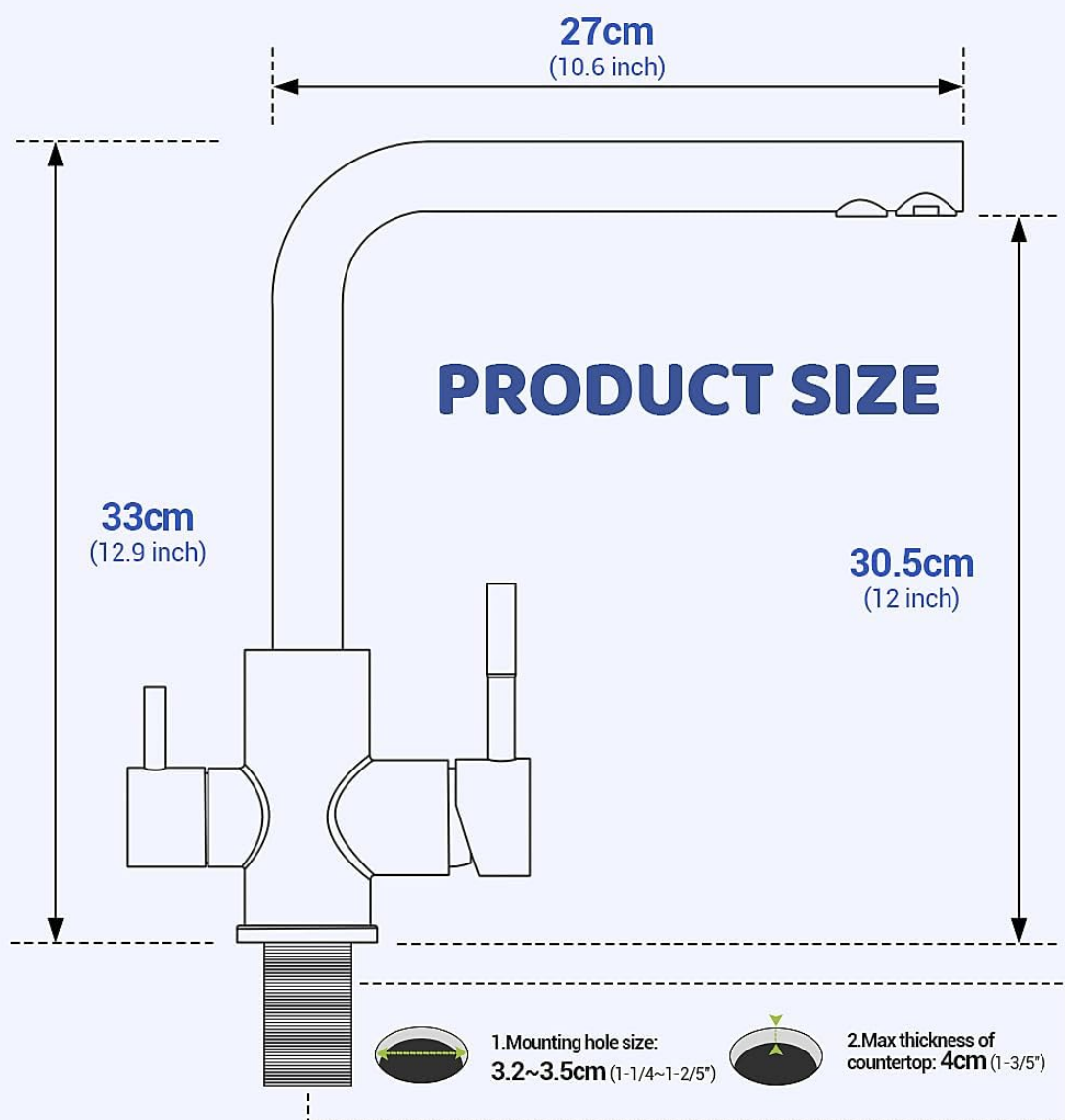
## TROUBLESHOOTING

If you encounter issues with your faucet, refer to the following common problems and solutions:

Problem	Possible Cause	Solution
Water leakage from base or handles	Loose connections; Worn O-rings or cartridge.	Check and tighten all connections. If leakage persists, the internal cartridge or O-rings may need replacement. Contact customer support.
Low water flow	Clogged aerator; Partially closed shut-off valves; Kinked supply hose.	Remove and clean the aerator. Ensure shut-off valves are fully open. Check supply hoses for kinks.
Water spray or irregular stream	Clogged aerator.	Remove and clean the aerator.
Difficulty turning handles	Mineral buildup; Worn cartridge.	Clean around the handle base. If still stiff, the cartridge may need replacement.

## SPECIFICATIONS

Feature	Detail
Manufacturer	APPASO
Item Model Number	APS333BN-NEW
Product Dimensions	28.5 x 13.8 x 28.5 cm; 2.2 kg
Color	Stainless Steel
Style	Modern
Finish	Brushed
Material	Stainless Steel
Installation Method	Monoforo (Single Hole)
Flow Rate	2 Gallons per minute
Number of Holes	3 (for water lines, not mounting)
Spout Height	18 Centimeters
Spout Reach	10.5 Centimeters
Handle/Lever Placement	Central
Number of Handles	2
Handle/Lever Material	Stainless Steel
Mounting Type	Deck Mounted
Special Features	BPA-free, Oxidation Resistant, 360° Rotation, Lead-free, Water Saving System
Included Components	1 APPASO 3-way kitchen faucet, 1 set of fixing nuts, 1 counterweight, 1 user manual
Batteries Required?	No
Item Weight	2.2 Kilograms



This diagram provides precise measurements for the faucet, including its overall height (33cm), spout reach (27cm), required mounting hole size (3.2-3.6cm), and supply hose length (60cm).

## WARRANTY AND SUPPORT

Your APPASO 3-Way Kitchen Faucet comes with a **3-year manufacturer's warranty**. This warranty covers defects in materials and workmanship under normal use.

For any questions, concerns, or warranty claims regarding your faucet, please do not hesitate to contact us via email through Amazon. Our customer support team is committed to resolving your issue within 24 hours.

Please retain your proof of purchase for warranty purposes.

