

DDPAI X5P

DDPAI X5 Pro Dash Cam User Manual

Model: X5P

1. INTRODUCTION

This manual provides detailed instructions for the installation, operation, and maintenance of your DDPAI X5 Pro Dash Cam. Please read this manual thoroughly before using the device to ensure proper functionality and safety.

The DDPAI X5 Pro is a high-performance dual-channel dash camera system designed to record both front and rear views of your vehicle. It features 4K resolution for the front camera, 1080P for the rear, 5G WiFi connectivity, built-in GPS, and a supercapacitor for enhanced durability.

2. PRODUCT OVERVIEW AND FEATURES



Figure 2.1: DDP AI X5 Pro Dash Cam with its components and app view.

PREMIUM FEATURES



The image shows a man and a woman driving in a car, both smiling. A DDPAI dashcam is mounted on the windshield. Below the image, there are six feature cards arranged in a 3x2 grid, each with an icon and a description.

 Real 4K + 1080P Dual channel recording Front and rear cameras record video at 2160P and 1080P video	 Wi-Fi & GPS Support Transfer your recordings to your mobile devices using an App interface. Built-in GPS to track the driving route, location and speed.
 32G eMMC Storage & 128GB Max SD Card Support Built-in 32G eMMC Storage and supports high-endurance micro SD memory cards up to 128GB max.	 8MP Sony IMX415 Sensors f/1.8 Aperture @ 7 Glass Camera Lens can handle low light conditions.
 Collision Detection & Loop Recording Footage is protected in the event of a collision. New recordings overwrite oldest recordings.	 Super Capacitor Enhanced temperature resistance to extreme climate.

Figure 2.2: Key features including 4K+1080P recording, Wi-Fi & GPS, 32G eMMC storage, 8MP IMX415 sensor, collision detection, and supercapacitor.

- **Dual-Channel Recording:** Records simultaneously in 4K (front) and 1080P (rear) for comprehensive coverage.
- **Sony IMX415 Sensor:** 8MP sensor with F1.8 aperture and 7 optical lenses for superior image clarity, especially in low light conditions.
- **Built-in 5G WiFi:** Enables fast transfer of recordings to your mobile device via the DDPAI app.
- **Integrated GPS:** Supports multi-satellite navigation systems (GPS, BDS, GLONASS, Galileo) for accurate location and speed tracking.
- **Dual Storage:** Features built-in 32GB eMMC storage and supports external Micro SD cards up to 128GB (not included).
- **Supercapacitor:** Provides enhanced temperature resistance and longer lifespan compared to traditional batteries.
- **G-Sensor:** Automatically detects sudden shakes/collisions and locks footage to prevent overwriting.
- **Loop Recording:** Ensures continuous recording by overwriting the oldest unlocked files.
- **24-Hour Parking Monitor:** Provides surveillance when the vehicle is parked (requires hardwire kit, sold separately).

3. PACKAGE CONTENTS

Verify that all items are present in the package:

- DDPAI X5 Pro Front Dash Cam
- Rear Camera
- Car Charger
- Power Cable
- Rear Camera Cable
- Suction Cup Mount
- User Manual
- Memory Card (32GB eMMC built-in, external card not included)

4. SETUP GUIDE

4.1 Installing the Front Dash Cam

1. **Choose Location:** Select a suitable location on your windshield, preferably behind the rearview mirror, to ensure it does not obstruct your view.
2. **Clean Surface:** Clean the windshield surface thoroughly where the dash cam will be mounted.
3. **Attach Mount:** Secure the suction cup mount to the cleaned windshield. Ensure it is firmly attached.
4. **Mount Dash Cam:** Slide the DDPAI X5 Pro onto the mount until it clicks into place.
5. **Connect Power:** Connect the power cable to the dash cam and route it along the windshield edge, down the A-pillar, and to the car's cigarette lighter socket using the provided car charger.

4.2 Installing the Rear Camera

1. **Choose Location:** Mount the rear camera on the rear windshield, ensuring a clear view of the road behind.
2. **Connect Cable:** Connect the rear camera cable to the rear camera and route it to the front dash cam. This typically involves routing the cable along the headliner and side panels.
3. **Connect to Front Cam:** Plug the rear camera cable into the designated port on the front dash cam.



Figure 4.1: Illustration of typical front and rear dash cam installation and cable routing.

5. OPERATING INSTRUCTIONS

5.1 Powering On/Off

- The dash cam will automatically power on and begin recording when the vehicle's ignition is turned on.
- It will automatically power off a few seconds after the ignition is turned off.

5.2 Recording Modes

- **Normal Recording:** Continuous recording while driving. Files are saved in segments (e.g., 1, 3, or 5 minutes) and loop recorded.
- **Emergency Recording (G-Sensor):** In case of a sudden impact or collision, the built-in G-sensor will trigger emergency recording, locking the current video segment to prevent it from being overwritten.
- **Parking Monitoring:** When properly hardwired (hardwire kit sold separately), the dash cam can monitor your vehicle for impacts or motion while parked.



Figure 5.1: Flowchart illustrating loop recording, conflict detection, G-sensor activation, and emergency lock save.

Super Night Vision

Enhance nightscape view, take in more light and more image information, be empowered in darkness, and create sufficiently ultra-clearly video and pictures for collisions even in dark situations.



Sony IMX415



7 optical lens



F1.8 aperture



NightVIS technology

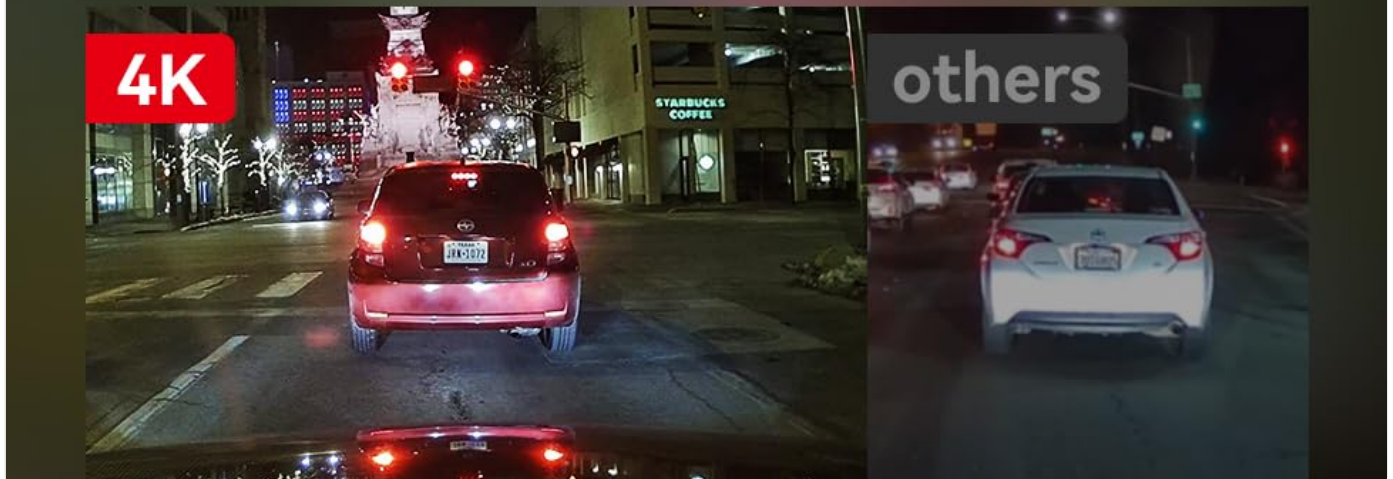


Figure 5.2: The 24-hour parking monitor feature, which records events when the car is parked and damaged.

6. APP CONNECTION AND WI-FI SETUP

The DDPAI app allows you to view live footage, playback recordings, download files, and adjust settings. The dash cam features built-in 5G WiFi for faster data transfer.

1. **Download App:** Download the "DDPAI" mobile application from your device's app store (iOS App Store or Google Play Store).
2. **Power On Dash Cam:** Ensure the dash cam is powered on.
3. **Launch App:** Open the DDPAI app on your smartphone.
4. **Connect New Devices:** Tap on "Device > Connect New Devices" within the app.
5. **Select Dash Cam WiFi:**
 - For Android Devices: The DDPAI App will automatically search for the Dash Cam network.
 - For iOS Devices: Go to "Settings > WLAN" on your phone and select the DDPAI Dash Cam's WiFi network.
6. **Enter Password:** Enter the default password: **1234567890**.
7. **Confirm Connection:** Return to the DDPAI app and wait a few seconds until the preview screen appears, indicating a successful connection.

Note: The available distance for WiFi connection is approximately 9-15 feet. The connection will automatically disconnect if out of range. Ensure your phone's WLAN is enabled for iOS devices.

Built-in GPS+BDS+GLONASS+Galileo Multi-GPS System

Delivers more detailed and higher resolution vehicle tracking capabilities.



Figure 6.1: Screenshot showing the DDPAI app interface for previewing and downloading videos, with icons for social media sharing.

7. GPS FUNCTIONALITY

The built-in multi-satellite navigation system (GPS, BDS, GLONASS, Galileo) provides accurate location and speed data, which is embedded into your video recordings. This allows for detailed tracking and playback of your routes.

NightVIS Technology, Super-Clarity, Even in Low Light

Sony IMX415 8MP Sensor



UHD



NightVIS Technology



F1.8 7G lens

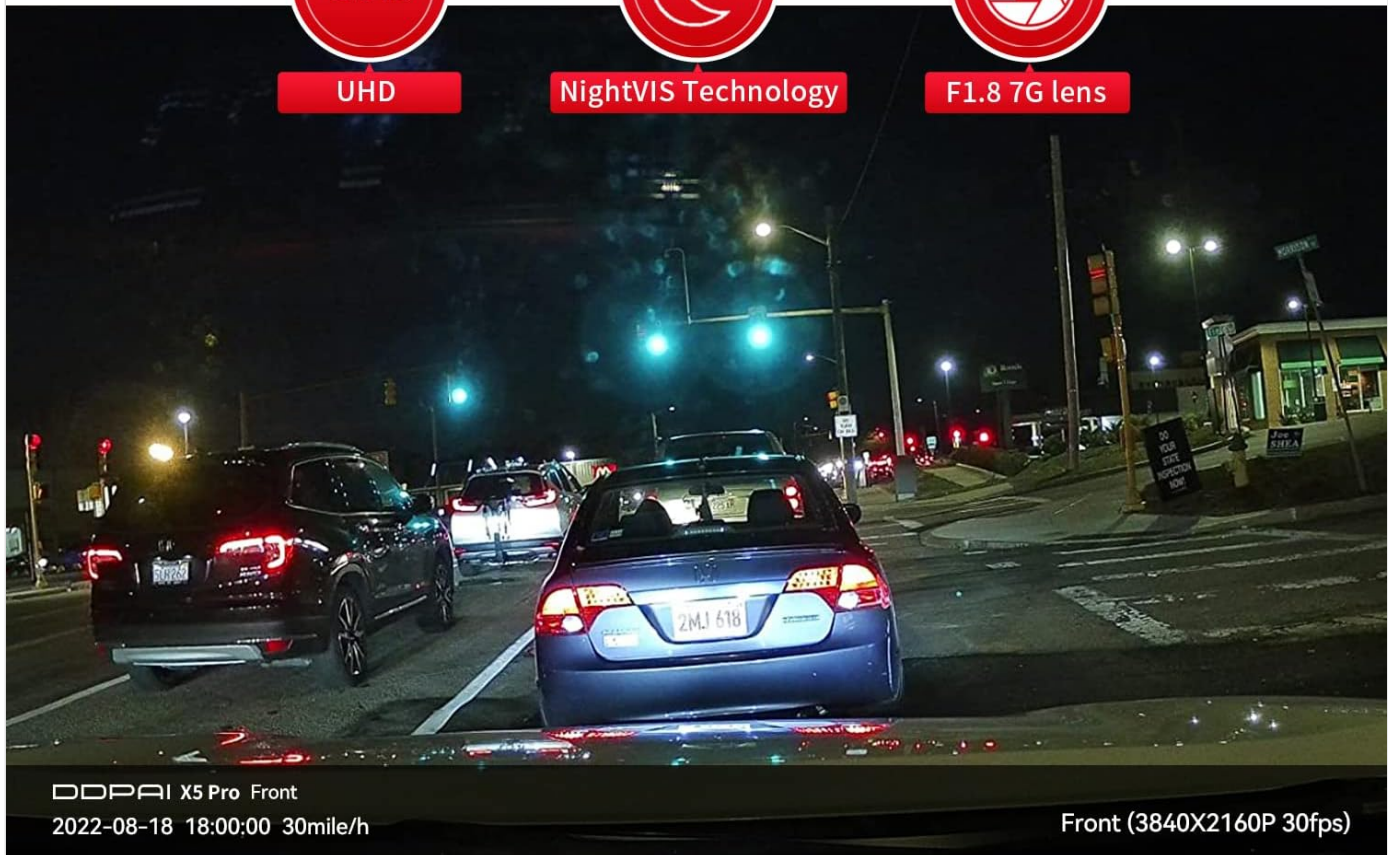


Figure 7.1: Visual representation of the multi-GPS system providing detailed vehicle tracking and data overlay on video.

Dual Storage, Dual Guarantee

Built-in **32G eMMC** and external **128G TF card(not included)**, never worry about losing any important moment even if the TF card mistake.



Figure 7.2: The internal GPS logger allows marking time, date, location, and speed information directly onto recordings, supporting higher frame rates.

8. STORAGE MANAGEMENT

The DDPAI X5 Pro comes with built-in 32GB eMMC storage and supports an external Micro SD card up to 128GB (TF card not included). This dual storage system provides redundancy and ample space for your recordings.

- **eMMC Storage:** The integrated 32GB eMMC provides reliable internal storage.
- **Micro SD Card:** For expanded storage, insert a high-endurance Micro SD card (Class 10 or higher recommended) into the designated slot.
- **Formatting:** It is recommended to format the Micro SD card periodically through the DDPAI app to maintain optimal performance and prevent data corruption.

Preview and Download on Smartphone

Easy to preview, download videos and control your camera on your smartphone and share your videos with beautiful scenery along your driving way easily to your friends through DDPAI APP.



Figure 8.1: Diagram illustrating the dual storage system with built-in eMMC and support for external TF cards.

9. TROUBLESHOOTING

Problem	Possible Cause	Solution
Dash cam does not power on.	No power supply; loose connection; faulty car charger.	Check power cable connection; ensure car charger is working; try a different power source.
Cannot connect to Wi-Fi.	Incorrect password; out of range; Wi-Fi interference.	Ensure correct password (1234567890); move closer to the dash cam; restart both devices.
Video footage is blurry or unclear.	Protective film on lens; dirty lens; improper mounting angle.	Remove protective film; clean the lens with a soft cloth; adjust mounting angle.
Micro SD card error / Cannot read TF card.	Card not inserted correctly; incompatible card; corrupted card.	Reinsert card; use a high-endurance Class 10 or higher card; format the card via the app or replace it.

Problem	Possible Cause	Solution
App crashes or freezes.	Outdated app version; phone storage full; software bug.	Update the DDPAI app; clear phone storage; restart the app and phone.

10. SPECIFICATIONS

- **Product Dimensions (Front):** 4.05 x 2.54 x 1.31 inches
- **Item Weight:** 1.7 pounds
- **Video Resolution:** Front: 3840*2160@30fps or 1920*1080P@90fps, Rear: 1080P@25fps
- **Image Sensor:** Sony IMX415 8MP
- **Lens:** Front: 7 optical lens, F1.8 aperture; Rear: Optical lens, F2.0 aperture
- **Storage:** Built-in 32GB eMMC, supports external Micro SD Card up to 128GB (TF card not included)
- **WiFi:** Built-in 5G WiFi
- **GPS:** Built-in multi-satellite navigation system (GPS, BDS, GLONASS, Galileo)
- **G-Sensor:** Built-in 6-axis Motion tracking device
- **Power Input:** Front: 12V-24V/1A, Rear: 5V 0.5A
- **Supercapacitor:** Yes
- **Color:** Black
- **Control Method:** App

11. OFFICIAL PRODUCT VIDEOS

Watch these official videos from DDPAI Direct for additional guidance and feature demonstrations.

DDPAI DASH CAM 4K Front and Rear 2160P 30fps or 1080P 90fps



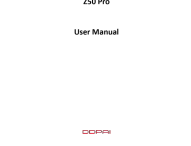



Your browser does not support the video tag.

This video demonstrates the 4K front and 1080P rear recording capabilities of the DDPAI X5 Pro Dash Cam, showcasing its high-resolution footage and smooth performance. It highlights key features such as NightVIS Technology, Sony IMX415 sensor, and Realcube Image Technology for clear visuals in various lighting conditions. The video also illustrates the dual-channel recording, sub-meter-level GPS accuracy, and the Sense Reality Skin feature for an enhanced driving experience.

12. WARRANTY AND SUPPORT

DDPAI is committed to providing reliable products and excellent customer service. For any issues, questions, or concerns regarding your DDPAI X5 Pro Dash Cam, please refer to the contact information provided in your product packaging or visit the official DDPAI website for support.

DDPAI offers 100% US-based support to assist with setup, troubleshooting, and any other inquiries you may have.

	<p>DDPAI MINI 5 Dash Cam User Manual</p> <p>Comprehensive user manual for the DDPAI MINI 5 Dash Cam, covering installation, features, and operation. Learn how to set up and use your dash cam for optimal performance.</p>
	<p>DDPAI Mini Dash Cam User Guide - Specifications, Installation, and App Setup</p> <p>Official user guide for the DDPAI Mini dash cam. Learn about its specifications, package contents, installation process, LED indicators, how to pair with the DDPAI app for preview and downloads, and find contact details for DDPAI Technology Co., Ltd.</p>
	<p>DDPAI Z50 Pro User Manual: Installation, Features, and Operation Guide</p> <p>Comprehensive user manual for the DDPAI Z50 Pro dash cam, covering installation, app connection, video and photo functions, parking monitoring, ADAS, GPS, maintenance, and FAQs.</p>
	<p>DDPAI X2S Pro Dash Cam User Guide</p> <p>Comprehensive user guide for the DDPAI X2S Pro Dash Cam, covering specifications, package contents, product overview, LED indicators, installation steps, and DDPAI app instructions for preview, playback, and video download.</p>
	<p>DDPAI Mola N3 GPS & N3 Pro GPS Dash Cam User Manual</p> <p>Comprehensive user manual for the DDPAI Mola N3 GPS and N3 Pro GPS dash cams, covering package contents, product features, installation, app usage, and technical specifications.</p>
	<p>DDPAI N3 Pro Dash Cam User Manual</p> <p>This user manual provides comprehensive instructions for the DDPAI N3 Pro Dash Cam, covering installation, setup, features like GPS and parking monitoring, app integration, and troubleshooting.</p>

Name of Parts	ANTENNA		
Specification of Parts	ACCESSORY, ANTENNA, 110W, dual band VHF/UHF, ANTENNA, three-quarter wave terminal, 24 x 6 1/2 in. 1-1018-11018-11718-031-A		
State at the material number	1001000000		
Model applications:	110 B100 Receiver - E31100A Platform:SCM71 Models black		
Name of Supplier:	Shenzhen Yue Ford Communication Technology Co., Ltd		
Type of Supplier:	<input checked="" type="checkbox"/> Manufacturer, <input type="checkbox"/> Agent, <input type="checkbox"/> Trader:		
Manufacturer's material number:	1101801-11718-031-A		
Recognition number:	C200000004		
Keep an eye on the date of issue:			

Supplier approval column			
To develop: LTT	audits		Approved by the:
* The following is the check column of the tag tag			
Material to send sample check column		Material confirmation and approval column	
Procurement Engineer	Purchasing Supervisor	Research and Development Engineer	Research and Development Supervisor

9999 Technology Co., Ltd. Tel: 86-139-20482753
 Address: Guangsheng, Chuan, 179A Floor, Xinhua Flatcraft Building, Software Industry Base, Huashan District, Shenzhen
 Website: www.9999.com
 9999 vision equipment Co., Ltd
 Address: Building 6, No. 100, Nishan Road, Xinhai Town, Pinghu City, Jiangsu, Zhejiang

 Supplier Address: 6th Floor, Building 3, East Guangdong Industrial Zone, No. 131, Qianjin Second Road, Nuo 'n District, Shenzhen
 Contact information of supplier: Chen Deng /13320082008

Antenna Specification IN PHASE INTERNATIONAL LIMITED BD2007 DashCam 2BMKT 2BMKTBD2007
bd2007

lang:en score:19 filesize: 1.09 M page_count: 10 document date: 2024-12-03