

[Manuals.plus](#) /

> [Roinvou](#) /

> Roinvou 10.1 Inch Android 13 Car Stereo Instruction Manual for Toyota RAV4 2013-2018

Roinvou B0BDLGP9CD

Roinvou 10.1 Inch Android 13 Car Stereo Instruction Manual

For Toyota RAV4 (2013-2018) - Model: B0BDLGP9CD

1. INTRODUCTION

Thank you for choosing the Roinvou 10.1 Inch Android 13 Car Stereo. This manual provides detailed instructions for the installation, setup, and operation of your new car stereo system. Please read this manual thoroughly before use to ensure proper functionality and to maximize your user experience. This unit is specifically designed for Toyota RAV4 models from 2013 to 2018.

2. SAFETY INFORMATION

Always prioritize safety during installation and operation. Improper installation can lead to vehicle damage or personal injury. If you are unsure about any step, consult a qualified professional. Do not operate the device in a way that distracts you from driving. Keep the volume at a level that allows you to hear outside traffic sounds.

3. PACKAGE CONTENTS

Verify that all items are present in your package:

- Roinvou 10.1 Inch Android Car Stereo for Toyota RAV4
- Power Cable
- RCA Cable
- GPS Antenna
- AHD Backup Camera
- External Microphone
- Rear Camera Input Cable
- Dual USB Cable
- Installation Tool & Accessories

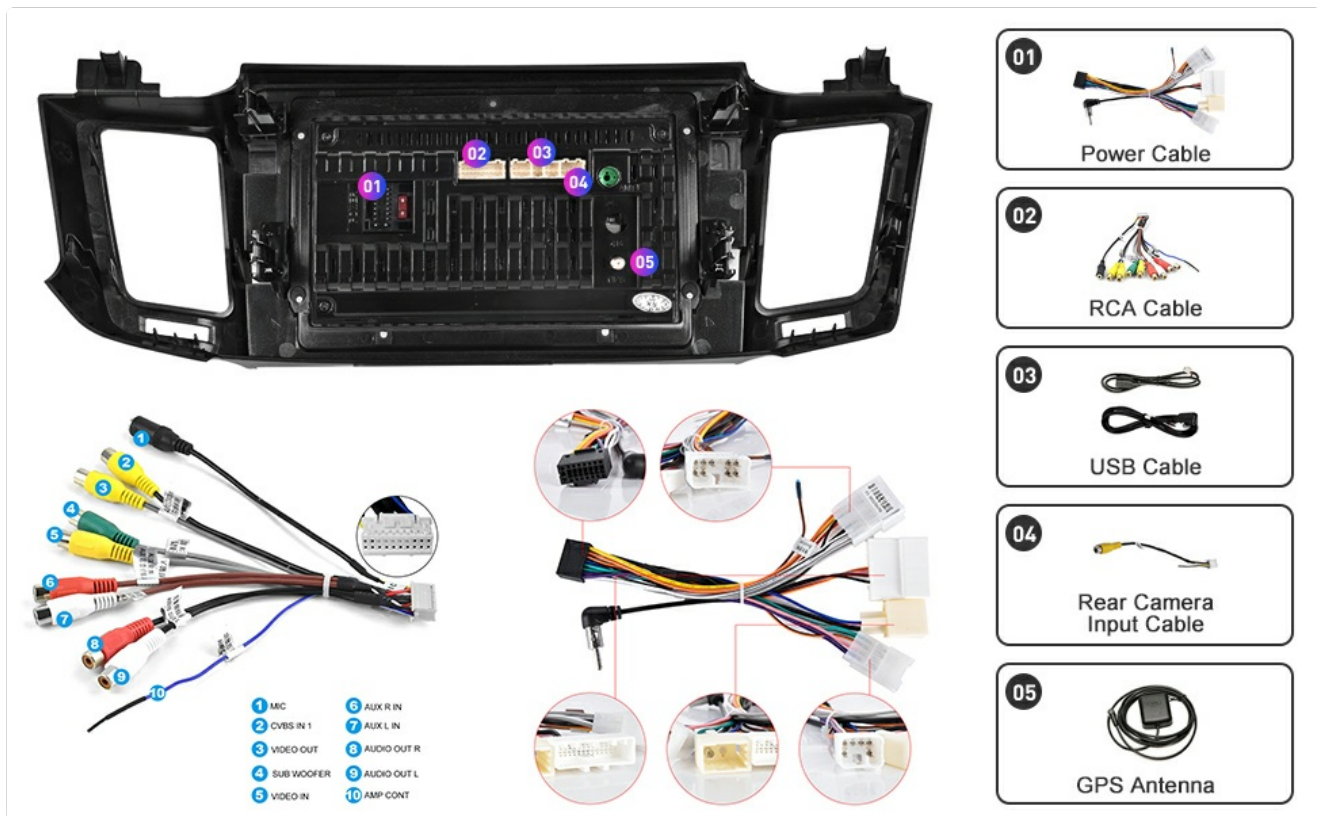


Figure 3.1: Included cables and accessories for the Roinvou car stereo. This image displays the power cable, RCA cable, USB cable, rear camera input cable, and GPS antenna, along with the main unit and various connectors.

4. PRODUCT OVERVIEW

The Roinvou 10.1 Inch Android 13 Car Stereo offers a range of features to enhance your driving experience:

- **Android 13 Operating System:** Provides a modern and intuitive user interface with access to various apps.
- **10.1 Inch IPS Touch Screen:** High-definition display with 1024 x 600 resolution for clear visuals.
- **Wireless CarPlay & Android Auto:** Seamless integration with your smartphone for navigation, music, calls, and more.
- **GPS Navigation & Wi-Fi:** Built-in GPS module for offline maps and Wi-Fi connectivity for online maps and app downloads.
- **Bluetooth:** Supports hands-free calling, music playback, and contact synchronization.
- **FM/RDS Radio:** Stable radio reception with 18 preset stations and real-time traffic/weather updates.
- **Mirror Link:** Synchronize your phone screen to the stereo display (Android bidirectional, iPhone unidirectional).
- **AHD Backup Camera:** Enhances safety with a clear rear view.
- **Steering Wheel Control (SWC):** Compatible with existing steering wheel controls for convenience.



Figure 4.1: The Roinvou 10.1 Inch Android 13 Car Stereo unit, showcasing its display and included accessories like the AHD backup camera and external microphone.

Roinvou 10.1 Inch Android Car Stereo For Toyota RAV4 | 2013-2018

CarPlay

Android Auto

2GB + 32GB

Hi-Fi Effect

AHD

Figure 4.2: The Roinvou 10.1 Inch Android Car Stereo for Toyota RAV4 (2013-2018) with its main features highlighted, including CarPlay, Android Auto, Hi-Fi Effect, and AHD.

5. INSTALLATION

Proper installation is crucial for optimal performance. Follow these steps carefully:

5.1. Compatibility Check

Before beginning installation, ensure your Toyota RAV4 (2013-2018) dashboard configuration is compatible with the Roinvou stereo. This unit is designed for models **without** an OEM amplifier.



Figure 5.1: This image illustrates two types of Toyota RAV4 dashboards: 'A: Low Configuration Can be Installed' and 'B: High Configuration Cannot be Installed'. Verify your vehicle's dashboard matches Figure A for compatibility.

5.2. Removing the Original Unit

Carefully remove the existing car stereo and climate control panel. Use a panel popper tool to avoid damaging the dashboard. Disconnect all wiring harnesses and the antenna cable from the original unit.

Your browser does not support the video tag.

Video 5.1: This video demonstrates the process of disassembling the center console and removing the original car radio unit. It shows how to use a panel popper tool to detach the climate control panel, unscrew the main radio unit, and disconnect the various wiring harnesses and antenna.

5.3. Preparing the New Unit

Transfer any necessary components (e.g., hazard light switch, passenger airbag indicator) from the old unit's trim to the new unit's trim. Secure the mounting brackets to the new Roinvou stereo.

5.4. Wiring Connections

Connect the provided wiring harnesses to the Roinvou stereo and the vehicle's existing wiring. Ensure all connections are secure. The main harness, RCA cables, USB cables, rear camera input cable, and GPS antenna should be connected as per the diagram.



Figure 5.2: This image displays the wiring for the AHD backup camera, indicating connections for the reverse wire (A6), power (K), and ground (L). It also shows the dimensions of the Roinvou car stereo unit.

For steering wheel controls, refer to the specific wiring diagram for your vehicle's ASWC-1 connections. Typically, this involves connecting the black wire to chassis ground, the red wire to 12V accessory power, the green/orange wire to pin 7, and the black/green wire to pin 8 of the vehicle's radio harness. If you are unfamiliar with wiring, it is recommended to seek professional assistance.

PLEASE NOTE



If the original **car steering wheel** controls are not working properly, please cut the two wires circled in the image and wrap them with electrical tape.

Then, test the steering wheel controls again to see if they function correctly.

If you are unsure how to perform this operation, please contact our customer service for assistance.

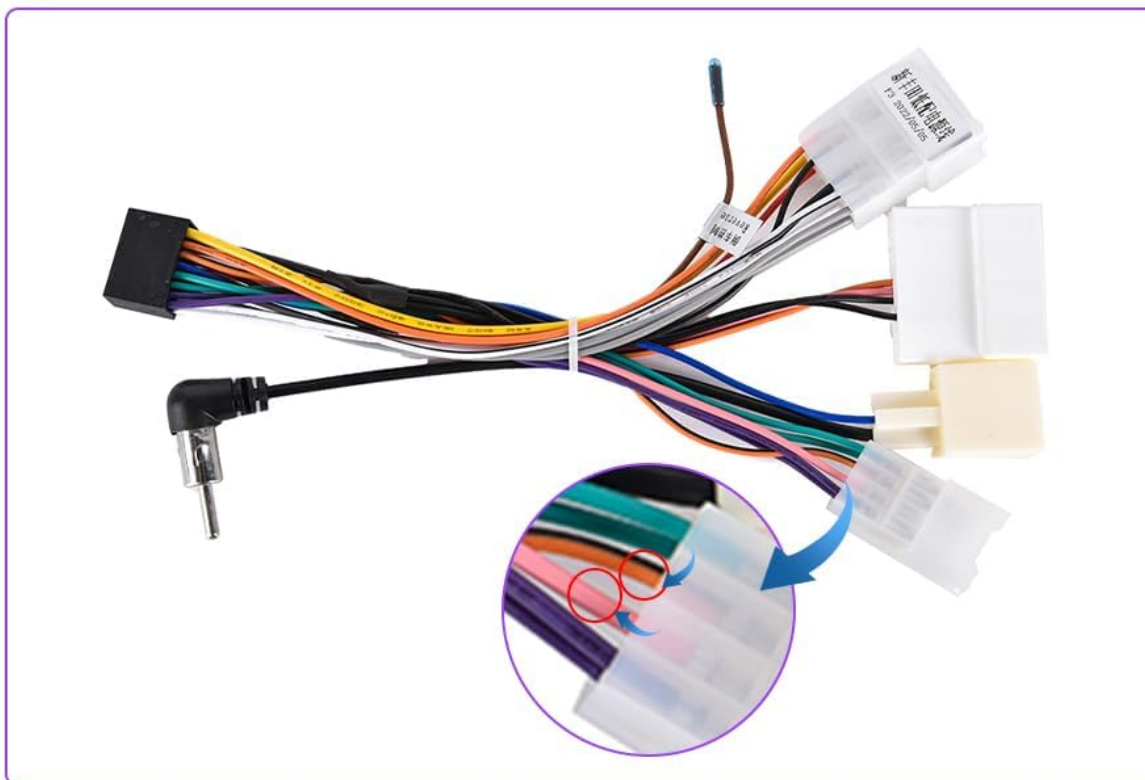


Figure 5.3: A warning note advising users to contact customer service if original car steering wheel controls are not working properly after installation. It suggests cutting and taping two specific wires if necessary, but recommends contacting support for assistance.

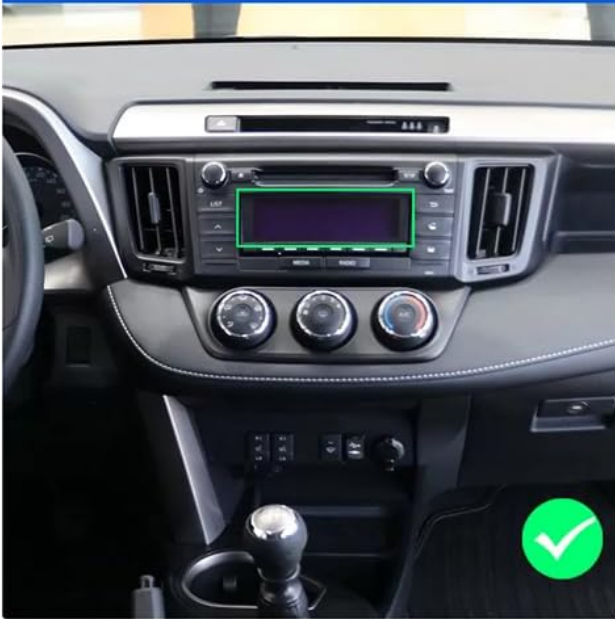
5.5. Reinstallation

Once all connections are made, carefully slide the new stereo unit into the dashboard opening. Secure it with the screws previously removed. Reattach the trim pieces, ensuring they snap firmly into place.

CAR MODELS Attention

Before making a purchase, please check your car's dashboard.
Our device is only compatible with the car dashboard shown in Figure A
and not compatible with the one shown in Figure B
If your car matches Figure B, please do not purchase.
Contact customer service for recommendations on suitable products.

A: Low Configuration Can be installed



B: High Configuration Cannot be installed



Figure 5.4: This image shows a side-by-side comparison of a Toyota RAV4 dashboard before and after the Roinvou car stereo installation, highlighting the integrated look of the new unit.

6. SETUP

After installation, proceed with the initial setup of your Roinvou car stereo.

6.1. Bluetooth Connection

To connect your phone via Bluetooth:

1. On the car stereo, navigate to the Bluetooth settings.
2. On your mobile phone, enable Bluetooth and search for available devices.
3. Select 'CarBT' (or similar device name) from the list on your phone.
4. Enter the default PIN (usually '0000') if prompted.
5. Once connected, 'mobile phone audio' and 'media audio' will be displayed on the stereo, indicating a successful connection.



Figure 6.1: The Bluetooth interface on the Roinvou car stereo, displaying a phone call screen with a dial pad.

6.2. Wireless CarPlay / Android Auto (ZLINK)

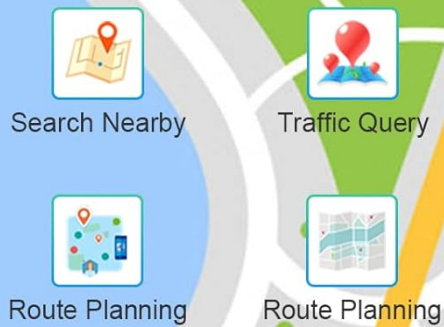
To use Wireless CarPlay or Android Auto:

1. Ensure your phone's Bluetooth is on and paired with the stereo.
2. On the car stereo, open the 'ZLINK' application.
3. The stereo will attempt to connect to your phone. Follow any prompts on your phone to allow CarPlay/Android Auto.
4. If the connection is not successful, manually connect your phone to the stereo's Wi-Fi hotspot (see 6.3). After connecting to Wi-Fi, delete the history record in ZLINK and try connecting again.

Your browser does not support the video tag.

Video 6.1: This video demonstrates the process of connecting a smartphone to the Roinvou car stereo via Bluetooth and then activating Wireless CarPlay or Android Auto using the ZLINK application. It also shows troubleshooting steps for manual Wi-Fi connection if the initial attempt fails.

GPS Navigation



WiFi Hotspot Connection

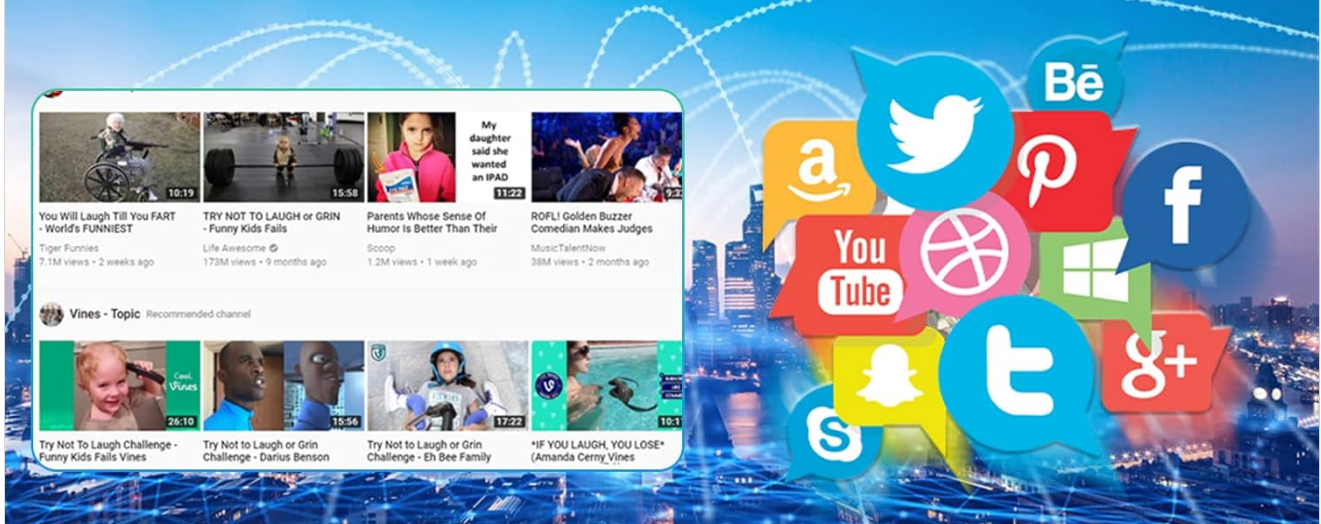


Figure 6.2: This image displays the user interfaces for Wireless CarPlay and Wireless Android Auto on the Roinvou car stereo, showing common applications like Maps, Music, and Phone.

6.3. GPS Navigation & Wi-Fi

The stereo has a built-in GPS module. For online maps and app downloads, connect to Wi-Fi:

1. Go to 'Settings' on the stereo.
2. Select 'Network & Internet' and then 'Wi-Fi'.
3. Turn on Wi-Fi and connect to an available network or your phone's hotspot.
4. You can download navigation apps like Waze or other apps from the Play Store.



FM/RDS Radio & Hi-Fi Sound



Figure 6.3: This image illustrates the GPS navigation interface with features like search, traffic query, and route planning, alongside a visual representation of Wi-Fi hotspot connectivity for downloading apps.



Figure 6.4: A detailed view of the GPS navigation screen on the Roinvou car stereo, showing route information and map details.



Figure 6.5: The Wi-Fi connection screen, demonstrating how to connect to a hotspot and access the Play Store for various applications.

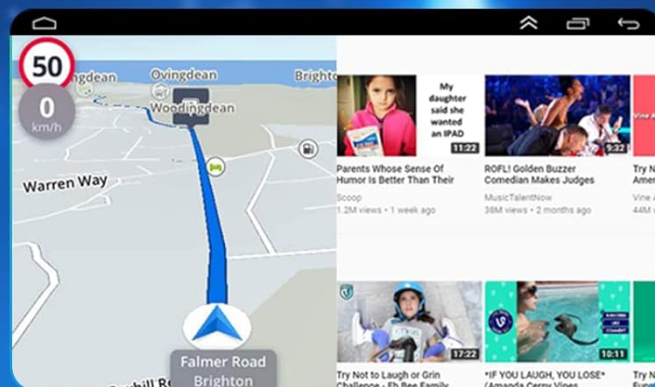
7. OPERATING INSTRUCTIONS

Learn how to use the various functions of your Roinvou car stereo.

7.1. FM/RDS Radio

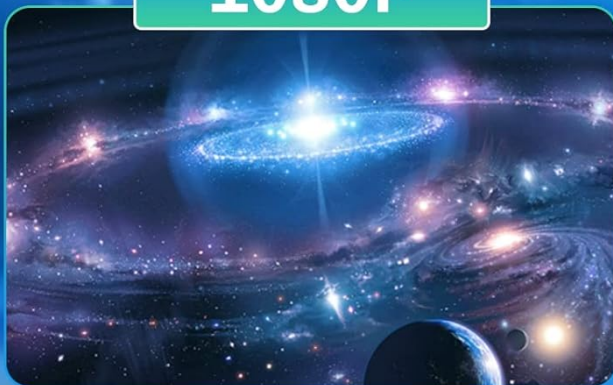
Access the 'Radio' app on the main screen. You can manually tune, perform semi-automatic or fully automatic channel searches, and save up to 18 preset stations. The RDS function provides additional information like station name and traffic announcements.

Support Split Touchscreen



1080P HD

1080P



720P



Figure 7.1: This image shows the Bluetooth call interface and the FM/RDS radio interface with frequency display and EQ options.



Figure 7.2: A closer look at the FM RDS Radio interface, showing frequency selection and preset options.

7.2. Steering Wheel Controls (SWC)

The unit supports your vehicle's original steering wheel controls. To configure them:

1. Go to 'Settings' and find the 'Steering Wheel Learning' or 'SWC' option.

2. Follow the on-screen instructions to assign functions to your steering wheel buttons.



Figure 7.3: This image shows the steering wheel control learning interface, allowing users to map physical buttons to stereo functions like volume, navigation, and track control.



Figure 7.4: This image highlights the steering wheel control interface for assigning functions and the Hi-Fi sound effect settings for audio customization.

7.3. AHD Backup Camera

When the vehicle is shifted into reverse gear, the display will automatically switch to the AHD backup camera view,

providing a clear image of the area behind your vehicle.

PLEASE NOTE



If the original **car steering wheel** controls are not working properly, please cut the two wires circled in the image and wrap them with electrical tape. Then, test the steering wheel controls again to see if they function correctly.

If you are unsure how to perform this operation, please contact our customer service for assistance.

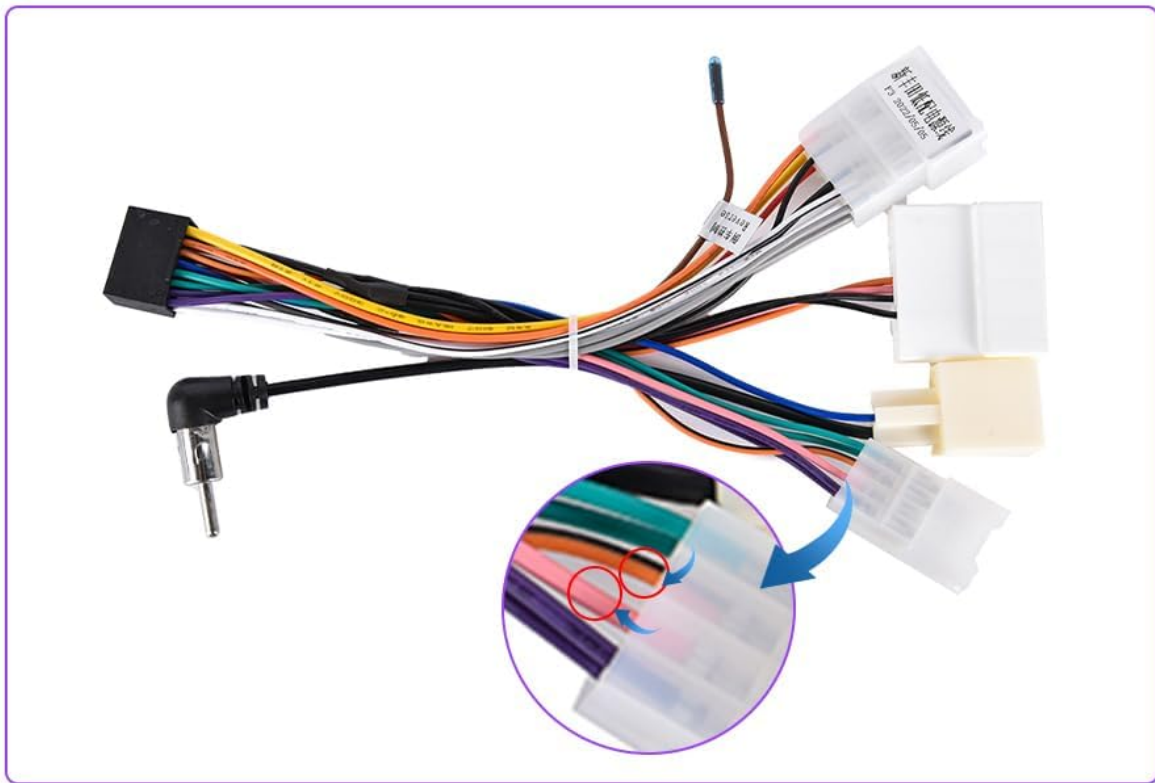
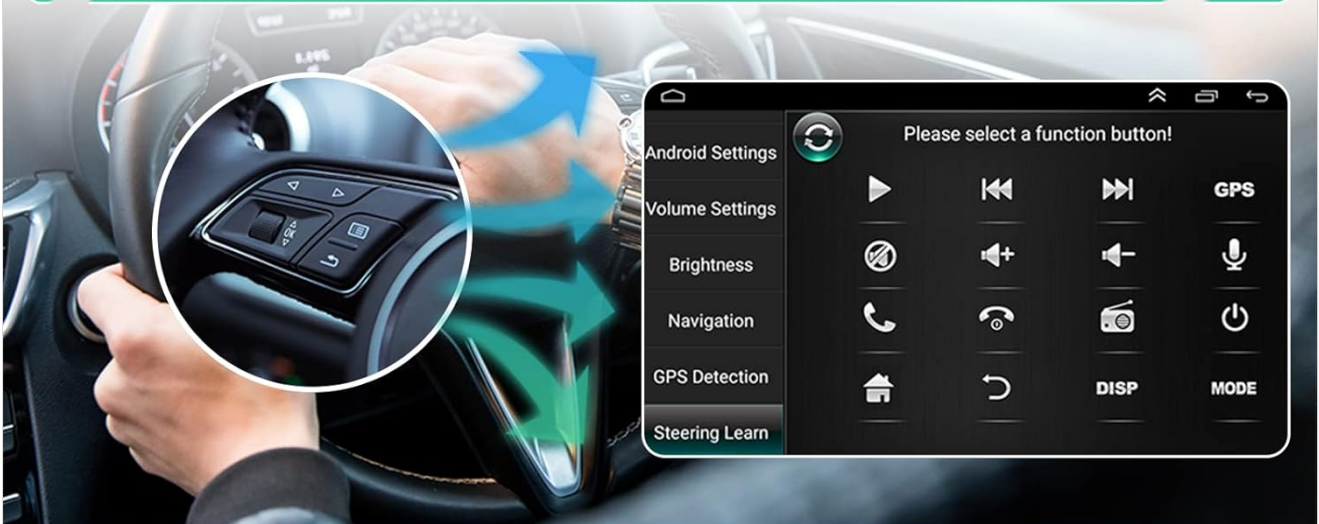


Figure 7.5: This image illustrates the AHD Rear View Camera in action, showing parking guidelines on the screen, and also highlights the steering wheel control interface.

7.4. Split Touchscreen

The 10.1-inch screen supports split-screen functionality, allowing you to run two applications simultaneously (e.g., navigation and music player).

Support SWC



AHD Rear View Camera

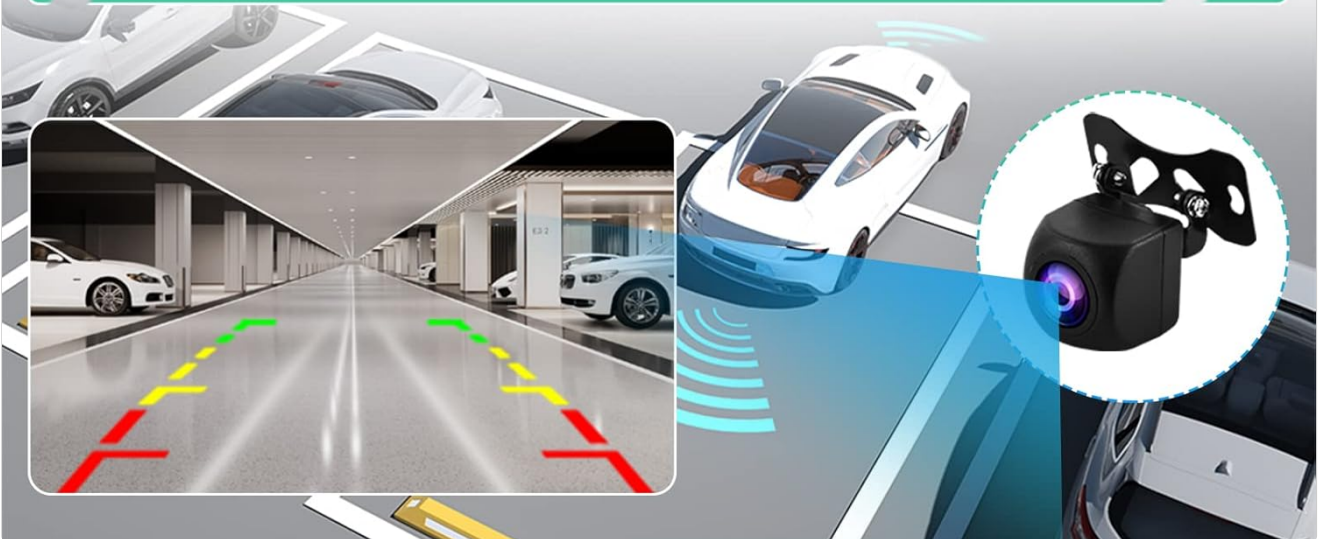


Figure 7.6: This image demonstrates the split touchscreen feature, showing a navigation app and a video playing simultaneously. It also highlights the 1080P HD display quality.

8. TROUBLESHOOTING

If you encounter issues, refer to the following common problems and solutions:

- **Steering Wheel Controls Not Working:**

- Ensure the SWC wiring is correctly connected as per the installation section.
- Go to 'Settings' > 'Steering Wheel Learning' and re-program the buttons.
- Some vehicles may require an additional CANBUS wiring harness for full functionality.

- **Reverse Camera Not Displaying:**

- Check the rear camera input cable connection to the stereo.
- Verify the camera's power and ground connections are secure.
- Ensure the reverse trigger wire (usually connected to the vehicle's reverse light) is properly connected.

- **No Power to the Unit:**

- Check the main power cable connections (constant 12V, accessory 12V, ground).
 - Inspect vehicle fuses related to the stereo system.
- **Bluetooth/CarPlay/Android Auto Connectivity Issues:**
 - Ensure Bluetooth is enabled on both the stereo and your phone.
 - Forget the device on both ends and re-pair.
 - For Wireless CarPlay/Android Auto, ensure a stable Wi-Fi hotspot connection is established.
 - Restart the stereo unit.

9. SPECIFICATIONS

Feature	Specification
Product Dimensions	17.4 x 3.94 x 5.91 inches
Item Weight	3.5 pounds
Screen Size	10.1 Inches
Resolution	1024 x 600
Operating System	Android 13
RAM/ROM	2GB RAM + 64GB ROM
Connectivity Technology	Bluetooth, USB, Wi-Fi
Special Features	Bluetooth, Touchscreen, CarPlay, Android Auto, Hi-Fi Sound, FM/RDS, Mirror Link, GPS Navigation, EQ Settings, Wi-Fi, SWC
Audio Output Mode	Stereo
Mounting Type	Dashboard Mount

10. MAINTENANCE

To ensure the longevity and optimal performance of your Roinvou car stereo, follow these maintenance guidelines:

- **Cleaning the Screen:** Use a soft, lint-free cloth to gently wipe the touchscreen. For stubborn smudges, slightly dampen the cloth with water or a screen-safe cleaner. Avoid harsh chemicals or abrasive materials.
- **General Cleaning:** Keep the unit free from dust and debris. Use a soft brush or compressed air to clean around buttons and vents.
- **Software Updates:** Periodically check for software updates to ensure you have the latest features and bug fixes. Follow the on-screen instructions for any available updates.
- **Avoid Extreme Temperatures:** Do not expose the unit to extreme heat or cold for extended periods, as this can affect its electronic components.

11. WARRANTY AND SUPPORT

Your Roinvou car stereo comes with a standard manufacturer's warranty. For specific warranty details, please refer to the documentation included with your purchase or contact Roinvou customer support. If you require technical assistance, have questions about installation, or need help with troubleshooting, please reach out to our customer service team. Contact information can typically be found on our official website or through your purchase platform.
