

Manuals+

[Q & A](#) | [Deep Search](#) | [Upload](#)

manuals.plus /

- › [Calor](#) /
- › [Calor Easygliss Eco Steam Iron FV5780C0 User Manual](#)

Calor FV5780C0

Calor Easygliss Eco Steam Iron FV5780C0 User Manual

Model: FV5780C0 | Brand: Calor

1. IMPORTANT SAFETY INSTRUCTIONS

Please read all instructions carefully before using the appliance. Keep this manual for future reference.

- Ensure the voltage indicated on the rating plate matches your mains voltage.
- Do not leave the iron unattended while it is connected to the mains.
- Always unplug the iron from the electrical outlet before filling with water, emptying, or cleaning.
- Keep the iron and its cord out of reach of children.
- Never immerse the iron, cord, or plug in water or any other liquid.
- Do not operate the iron with a damaged cord or plug, or if the iron has been dropped or damaged.
- Use the iron only for its intended household purpose.
- The soleplate can become extremely hot. Avoid contact with hot surfaces.

2. PRODUCT OVERVIEW

The Calor Easygliss Eco Steam Iron FV5780C0 is designed for efficient and eco-friendly garment care. It features a Durilium Airglide soleplate for smooth gliding and powerful steam output.



Image: Front-side view of the Calor Easygliss Eco Steam Iron FV5780C0, showcasing its ergonomic design and water tank.

Key Features:

- **2800W Power:** For rapid heat-up and efficient ironing.
- **Durilium Airglide Soleplate:** Provides exceptional glide and scratch resistance.
- **Continuous Steam Output:** Up to 50 g/min for effective wrinkle removal.
- **Steam Boost Function:** Up to 240 g/min for stubborn creases.
- **Eco Mode:** Saves up to 30% energy without compromising performance.
- **Precision Tip:** For easy access to difficult areas like collars and buttons.
- **Eco-Design:** Made with 35% recycled materials and 88% recyclable.

GLISSE EXCEPTIONNELLE



Image: Underside view of the iron's soleplate, highlighting the Durilium Airglide technology and steam vents.

RESULTATS RAPIDES ET EFFICACES



Image: Close-up of the iron's precision tip, demonstrating its ability to reach tight areas for detailed ironing.

ECO DESIGN



Image: A graphic highlighting the "ECO design" feature of the iron, emphasizing its environmental considerations.

3. SETUP AND FIRST USE

3.1 Before First Use:

1. Remove any stickers or protective covers from the soleplate.
2. Clean the soleplate with a damp cloth.
3. For the first use, operate the iron on an old piece of fabric (e.g., an old towel) to remove any manufacturing residues. This may produce a slight odor or small amount of smoke, which is normal.

3.2 Filling the Water Tank:

1. Ensure the iron is unplugged from the power outlet.
2. Set the steam control to the "dry ironing" position (no steam).
3. Open the water filling inlet.
4. Fill the water tank with clean tap water up to the "MAX" level indicator. Do not overfill.
5. Close the water filling inlet securely.



DURILIUM
AIRGLIDE



Image: Side view of the iron showing the water tank and filling cap, indicating where to add water.

4. OPERATING INSTRUCTIONS

4.1 Temperature and Steam Settings:

1. Plug the iron into a suitable power outlet.
2. Adjust the temperature dial according to the fabric type. Refer to the garment care label.
3. The indicator light will illuminate while the iron is heating up and turn off when the desired temperature is reached.
4. For steam ironing, ensure the temperature setting is within the steam zone (usually indicated on the dial).
5. Adjust the steam control lever to the desired steam output.

4.2 Steam Ironing:

Once the iron reaches the correct temperature for steam, you can begin ironing. The continuous steam will be emitted from the soleplate.

DIFFUSION OPTIMALE DE LA VAPEUR



Image: The iron in operation, emitting steam from its soleplate, demonstrating optimal steam diffusion.

4.3 Steam Boost (Pressing Function):

For stubborn creases, press the steam boost button. A powerful burst of steam (up to 240 g/min) will be released. Wait a few seconds between each burst to allow the iron to regenerate steam.

4.4 Vertical Steaming:

The iron can be used for vertical steaming of hanging garments or curtains. Hold the iron vertically a few centimeters away from the fabric and press the steam boost button repeatedly.

4.5 Dry Ironing:

To dry iron, set the steam control to the "dry ironing" position (no steam) and adjust the temperature dial as needed. Ensure the water tank is empty if you prefer to dry iron without any risk of accidental steam.

4.6 Eco Mode:

Activate the Eco mode to reduce energy consumption by up to 30%. This mode is suitable for most fabrics and helps conserve energy while maintaining effective ironing performance.

JUSQU'À 30 % D'ÉNERGIE EN PLUS*



* Avec les réglages ECO, en comparaison avec le mode max

Image: The iron positioned next to folded laundry, illustrating the energy-saving Eco mode feature.

5. MAINTENANCE AND STORAGE

5.1 Cleaning the Soleplate:

- Always unplug the iron and allow it to cool completely before cleaning.
- Wipe the soleplate with a damp cloth and a non-abrasive cleaner if necessary.
- Do not use abrasive pads, metal scourers, or harsh chemicals.

5.2 Descaling (Self-Clean Function):

Regular descaling helps maintain optimal steam performance. Refer to the specific instructions for your model's self-clean function, typically involving filling the tank, heating the iron, and then activating a self-clean button over a sink to flush out mineral deposits.

5.3 Emptying and Storage:

- After each use, unplug the iron and allow it to cool.
- Empty any remaining water from the tank.

- Store the iron upright on its heel to protect the soleplate.
- Wrap the power cord loosely around the base or handle.

6. TROUBLESHOOTING

Problem	Possible Cause	Solution
Iron does not heat up.	Not plugged in; power outlet faulty; thermostat set too low.	Check power connection; try another outlet; adjust temperature dial.
No steam or insufficient steam.	Water tank empty; temperature too low for steam; steam control set to dry; iron needs descaling.	Fill water tank; increase temperature; adjust steam control; perform descaling.
Water leaks from soleplate.	Temperature too low for steam; water tank overfilled; steam boost used too frequently.	Increase temperature; do not overfill; allow time between steam boosts.
White flakes or brown stains on fabric.	Mineral deposits (limescale) in the iron.	Perform descaling procedure. Use distilled water in hard water areas.

7. SPECIFICATIONS

- **Model Number:** FV5780C0
- **Power:** 2800 Watts
- **Continuous Steam Output:** Up to 50 g/min
- **Steam Boost:** Up to 240 g/min
- **Water Tank Capacity:** 270 Milliliters
- **Soleplate:** Durilium Airglide Technology
- **Dimensions (L x W x H):** 30 x 13.5 x 15 cm
- **Weight:** 1.34 Kilograms
- **Voltage:** 2.3E+2 Volts (230V)
- **Country of Origin:** France

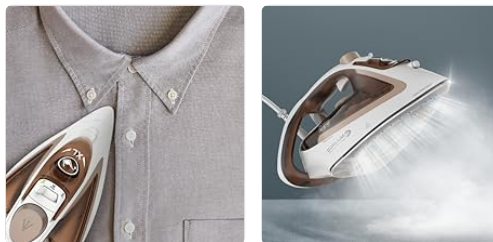


Image: The Calor Easygliss Eco Steam Iron with its dimensions (length, width, height) clearly marked.

8. WARRANTY AND SUPPORT

The Calor Easygliss Eco Steam Iron FV5780C0 is designed for durability and comes with a commitment to reparability for 15 years at a fair price. This commitment is supported by a network of 6200 repairers worldwide, aiming to contribute to environmental protection and waste reduction.

For warranty claims, technical support, or to locate a repair center, please refer to the official Calor website or contact their customer service. Keep your proof of purchase for warranty purposes.



Images: Logos indicating 15-year reparability and "Made in France" origin, highlighting product longevity and quality.