

Ulefone us-arm x11p

Ulefone Power Armor X11 Pro User Manual

Model: us-arm x11p | Brand: Ulefone

INTRODUCTION

The Ulefone Power Armor X11 Pro is a rugged smartphone designed for durability and performance in challenging environments. It features IP68 and IP69K water and dust resistance, MIL-STD-810G compliance for shock resistance, and a large 8150mAh battery for extended use. This manual provides essential information for setting up, operating, maintaining, and troubleshooting your device.



Figure 1: Ulefone Power Armor X11 Pro Rugged Smartphone.

WHAT'S IN THE BOX

Verify that all items are present in your product package:

- Ulefone Power Armor X11 Pro Smartphone
- AC power charger (100~240V /US plug)

- Data cable (100cm)
- Screen Protector
- Headphone Extension Cable
- SIM needle & Lanyard

SETUP

1. SIM and TF Card Installation

The device supports dual Nano SIM cards and one TF card for expandable storage up to 128GB. Locate the SIM card tray on the side of the phone. Use the provided SIM needle to eject the tray. Insert your Nano SIM cards and TF card into the designated slots, ensuring correct orientation. Carefully reinsert the tray into the phone.

Note: This device is not compatible with AT&T or Cricket networks for mobile data. Please check compatibility with your carrier before use.



Figure 2: Dual 4G VoLTE support and 3-card slot for SIM and TF cards.

2. Initial Power On and Android 12

Press and hold the power button until the Ulefone logo appears. Follow the on-screen prompts to complete the initial setup, including language selection, Wi-Fi connection, and Google account sign-in. The device runs on Android 12, offering a redesigned interface, enhanced privacy features, and improved performance.

A New Experience on Android 12

Enjoy New Android Experience



Figure 3: Android 12 operating system on the device.

OPERATING YOUR DEVICE

1. Custom Key and Glove Mode

The Ulefone Power Armor X11 Pro features a customizable side key. You can program this key to quickly access frequently used functions or applications. Additionally, the device supports a Glove Mode, allowing for touch screen operation even when wearing gloves, which is useful in outdoor or industrial settings.

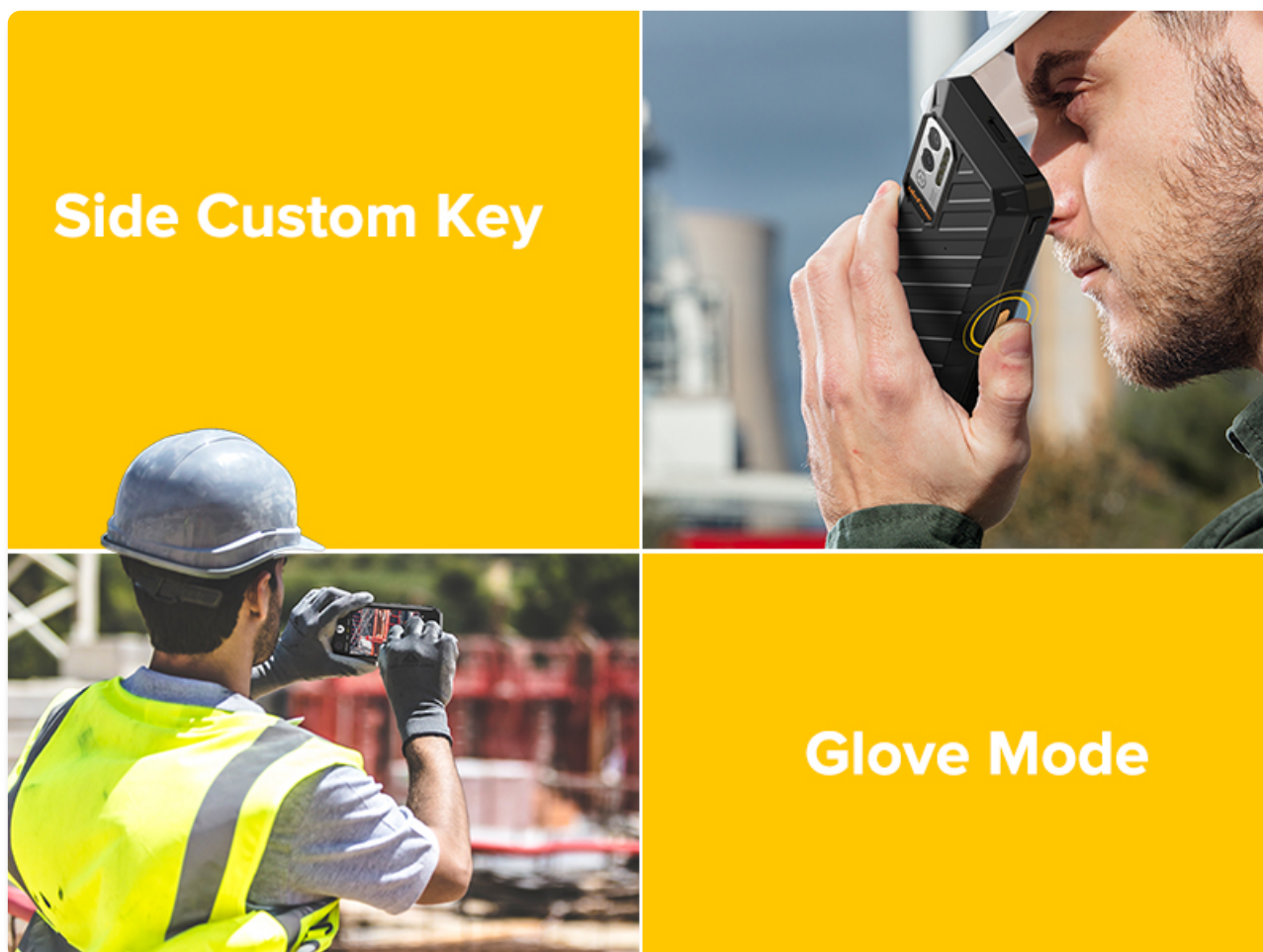


Figure 4: Side Custom Key and Glove Mode functionality.

2. Camera Features

The phone is equipped with a 16MP main camera and a 5MP front camera. The 16MP main camera, powered by a Samsung image sensor, offers instant auto-focus for capturing dynamic scenes and a depth sensor for stunning Bokeh effects. It also performs well in low-light conditions with AI enhancements.

For aquatic adventures, the device includes an Underwater Camera mode, allowing you to capture photos and videos while submerged.



Figure 5: 16MP Dual-Camera capabilities.



Figure 6: Underwater Camera mode in action.

3. Connectivity and Navigation

The Power Armor X11 Pro supports Dual 4G SIM functionality, allowing for two active SIM cards simultaneously. It also features NFC for convenient mobile payments and data transfer. For navigation, the phone integrates multiple global positioning systems including GPS, Glonass, Galileo, and BeiDou, ensuring accurate location tracking.

Enjoy your favorite radio stations without needing a headset, thanks to the built-in Headset-Free FM Radio feature.



Figure 7: NFC for mobile payments and data transfer.

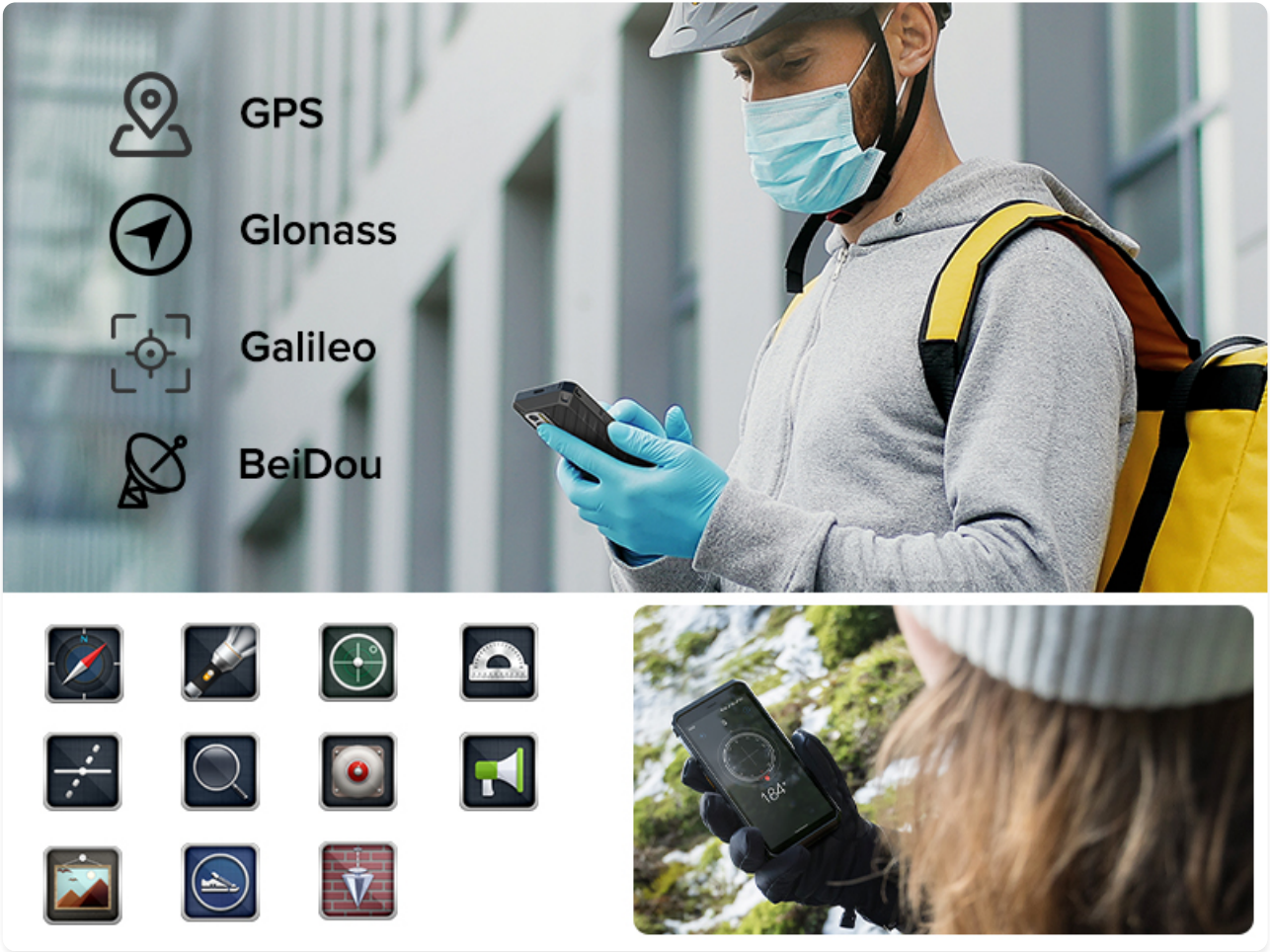


Figure 8: Multiple navigation systems and outdoor utility apps.

4. Battery Management

The device is powered by a large 8150mAh battery, providing up to 4 days of normal use on a single charge. It also supports 5W OTG reverse charging, allowing you to use your phone as a power bank to charge other compatible devices like earbuds or other phones.



Figure 9: Extended battery life of the 8150mAh battery.

Your browser does not support the video tag.

Video 1: Demonstrating the 8150mAh Mega Battery and OTG reverse charging feature.

MAINTENANCE

1. Ruggedness and Protection

The Ulefone Power Armor X11 Pro is built to withstand harsh conditions. It meets IP68 and IP69K ratings for water and dust resistance, meaning it can be submerged in water and is protected against high-pressure, high-temperature water jets. It also complies with MIL-STD-810G standards, offering resistance to drops, shocks, and extreme temperatures.

While designed for durability, it is recommended to avoid intentional abuse. Ensure all port covers are securely closed before exposing the device to water or dust.



Figure 10: Demonstrating the phone's solid and waterproof structure.

2. Cleaning Your Device

To clean your phone, wipe it with a soft, damp cloth. For stubborn dirt or mud, you may rinse it under clean, running water, ensuring all port covers are sealed. Do not use harsh chemicals or abrasive materials, as these can damage the device's protective coatings.

TROUBLESHOOTING

Common Issues and Solutions

- **No Data Connection or Signal:** Ensure your SIM card is correctly inserted and activated. Verify that your carrier supports the Ulefone Power Armor X11 Pro (Note: Not compatible with AT&T or Cricket). Check network settings to ensure mobile data is enabled. If issues persist, try restarting the device.
- **Device Unresponsive:** If the device becomes unresponsive, press and hold the power button for approximately 10-15 seconds to force a restart.
- **Battery Draining Quickly:** Reduce screen brightness, disable unnecessary background apps, turn off Wi-Fi/Bluetooth/GPS when not in use, and limit push notifications.
- **Screen Not Responding to Touch:** Ensure your hands are clean and dry. If using Glove Mode, ensure it is enabled and functioning correctly.

For further assistance, please contact Ulefone customer support at amazon@ulefone.com.

SPECIFICATIONS

Feature	Detail
Product Dimensions	6.23 x 3.02 x 0.57 inches
Item Weight	11.6 ounces (330 Grams)
Item Model Number	us-arm x11p
Operating System	Android 12.0
RAM	8 GB (4GB RAM + 4GB virtual RAM)
Memory Storage Capacity	64 GB (supports 128GB microSD card)
Wireless Communication Technologies	Cellular, NFC
Connectivity Technologies	NFC
GPS	True (GPS+Glonass+Galileo+BeiDou)
Special Features	8150mAh battery, IP68/IP69K, MIL-STD-810G Standards, Headset-Free FM Radio, 8-Core Processor, Custom Key, Gloves Mode, Underwater Camera, Outdoor Apps
Human Interface Input	Touchscreen


Feature	Detail
Scanner Resolution	720 x 1440
Other Camera Features	Rear (16MP), Front (5MP)
Audio Jack	3.5 mm
Color	Black
Battery Power Rating	8150 Milliamp Hours
Phone Talk Time	6 Hours
Phone Standby Time (with data)	440 hours
Manufacturer	Ulefone
Screen Size	5.45 Inches
CPU Speed	2000 MHz (MediaTek Helio G25 octa-core)
Wireless Carrier	Unlocked
Cellular Technology	4G


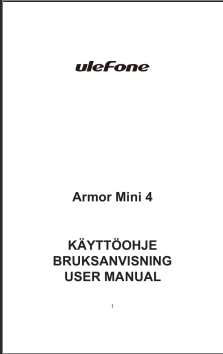
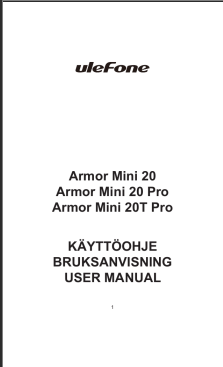


WARRANTY AND SUPPORT

For warranty information or technical support, please contact Ulefone directly. If you encounter any issues with data connection, signal, or other functionalities, you can reach out to their support team via email at amazon@ulefone.com.



Related Documents - us-arm x11p

	<p>Ulefone Armor X8i Rugged Smartphone - Specifications and Features</p> <p>Detailed specifications and features of the Ulefone Armor X8i rugged smartphone, including its MediaTek processor, 3GB RAM, 32GB storage, 5.7-inch HD+ screen, 5080mAh battery, and IP68/IP69K rating.</p>
---	--

 <p>The image shows the cover of the Ulefone Armor 3 User Manual. It features a QR code on the left, the Ulefone logo at the top right, and the text 'ARMOR 3 USER MANUAL' in the center.</p>	<p>Ulefone Armor 3 User Manual: Features, Setup, and Safety Guide</p> <p>Comprehensive user manual for the Ulefone Armor 3 rugged smartphone. Learn about installation, device features, basic operations, and essential safety precautions.</p>
 <p>The image shows the cover of the Ulefone Armor Mini 4 User Manual. It features the Ulefone logo at the top, 'Armor Mini 4' in the center, and 'KÄYTTÖOHJE BRUKSANVISNING USER MANUAL' at the bottom.</p>	<p>Ulefone Armor Mini 4 User Manual</p> <p>User manual for the Ulefone Armor Mini 4, providing detailed information on safety instructions, device parts, operation, SIM card installation, RF exposure, battery, and safe disposal.</p>
 <p>The image shows the cover of the Ulefone Armor Mini 20 Series User Manual. It features the Ulefone logo at the top, 'Armor Mini 20', 'Armor Mini 20 Pro', and 'Armor Mini 20T Pro' in the center, and 'KÄYTTÖOHJE BRUKSANVISNING USER MANUAL' at the bottom.</p>	<p>Ulefone Armor Mini 20 Series User Manual</p> <p>Comprehensive user manual for the Ulefone Armor Mini 20, Armor Mini 20 Pro, and Armor Mini 20T Pro smartphones, covering safety instructions, features, operation, and specifications.</p>
 <p>The image shows the cover of the Ulefone Armor 21 User Manual. It features a QR code on the left, the Ulefone logo at the top right, and the text 'ARMOR 21 USER MANUAL' in the center.</p>	<p>Ulefone Armor 21 User Manual</p> <p>User manual for the Ulefone Armor 21 rugged smartphone, detailing features, setup, safety information, and usage instructions. Includes information on card installation, hardware components, charging, basic operations, and safety guidelines.</p>
 <p>The image shows the cover of the Ulefone Power Armor 19 User Manual. It features a QR code on the left, the Ulefone logo at the top right, and the text 'POWER ARMOR 19 USER MANUAL' in the center.</p>	<p>Ulefone Power Armor 19 User Manual: Features, Safety, and Operation</p> <p>Comprehensive user manual for the Ulefone Power Armor 19 rugged smartphone. Learn about setup, features, safety precautions, and troubleshooting. Includes detailed diagrams and specifications.</p>