

STRICH SPT-10

STRICH SPT-10 Wireless Page Turner Pedal Instruction Manual

Model: SPT-10 | Brand: STRICH

INTRODUCTION

The STRICH SPT-10 Wireless Page Turner Pedal provides musicians and presenters with a hands-free solution for navigating digital sheet music, lyrics, presentations, and other multimedia content. This rechargeable foot pedal offers seamless control across various platforms, enhancing performance and focus.

PACKAGE CONTENTS

- STRICH SPT-10 Wireless Page Turner Pedal
- USB Type-C Charging Cable
- User Manual

PRODUCT FEATURES

- **Hands-Free Operation:** Allows for effortless page turning or content scrolling, freeing your hands for instruments or presentations.
- **Long Battery Life:** Provides over 65 hours of continuous use on a single 3-hour charge via USB Type-C. Battery status is indicated by three color-coded lights.
- **5 Operating Modes:** Features versatile modes including Page Up/Down, Left/Right Arrow, Up/Down Arrow, Left/Right Mouse Click, and Space-bar/Enter for broad compatibility.
- **Wide Compatibility:** Supports Android, HarmonyOS, and iOS systems, compatible with popular apps like PiaScore, OnSong, WPS, PDF Reader, iBooks, and more.
- **Portable & Silent Design:** Lightweight (13.4 ounces / 0.25 KG) with anti-slip rubber pads for quiet operation and stability on various surfaces.
- **Wireless Range:** Operates effectively up to 10 meters (33 feet).



Figure 1: Powerful wireless signal for seamless performance.



Figure 2: The pedal features 5 distinct modes for versatile control.



Figure 3: Enjoy over 65 hours of battery life on a single charge.



Figure 4: Anti-skid rubber pads ensure the pedal stays in place.

SETUP

1. Charging the Pedal

Before first use, fully charge the pedal. Connect the provided USB Type-C cable to the charging port on the back

of the pedal and to a 5V power source (e.g., USB wall adapter, computer USB port).

- **Red Indicator:** Charging in progress.
- **Green Indicator:** Fully charged.
- **Blue Indicator:** Battery capacity above 60%.
- **Red Indicator (flashing):** Battery capacity below 20%, recharge soon.



Figure 5: USB Type-C charging port for convenient power-up.

2. Bluetooth Pairing

1. Turn on the pedal by sliding the 'POWER' switch to ON. The indicator light will flash, indicating it's in pairing mode.
2. On your device (tablet, smartphone, or PC), go to Bluetooth settings and turn Bluetooth ON.
3. Search for available devices and select "Bluetooth Music Pedal".
4. Once connected, the indicator light will turn solid green.

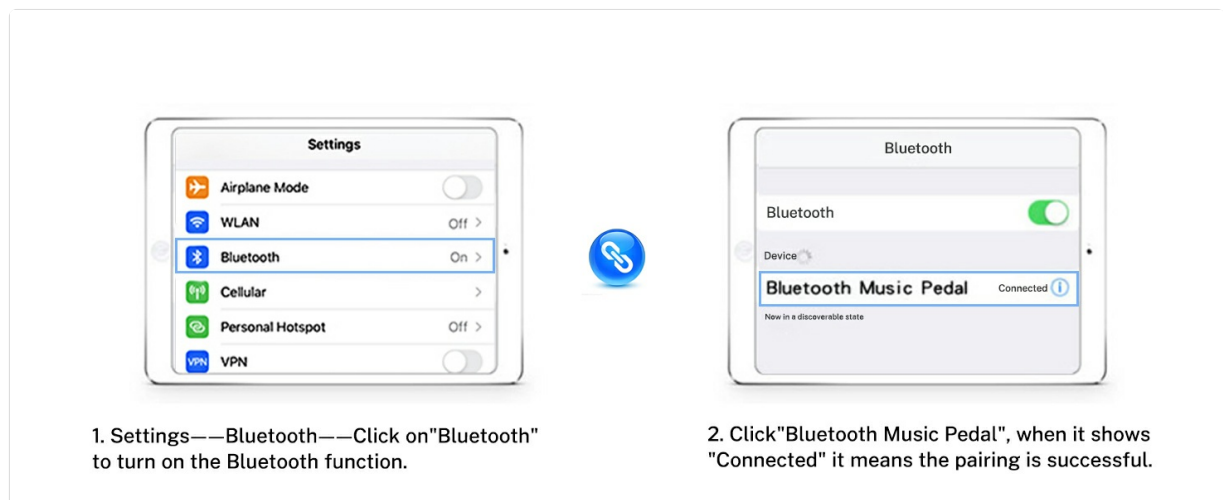


Figure 6: Step-by-step guide for initial Bluetooth pairing.

Re-pairing or Connecting to a New Device

1. To connect to a new device, first 'Forget This Device' on the previously paired device in its Bluetooth settings.
2. Follow steps 1-4 of the Bluetooth Pairing section above to connect to the new device.

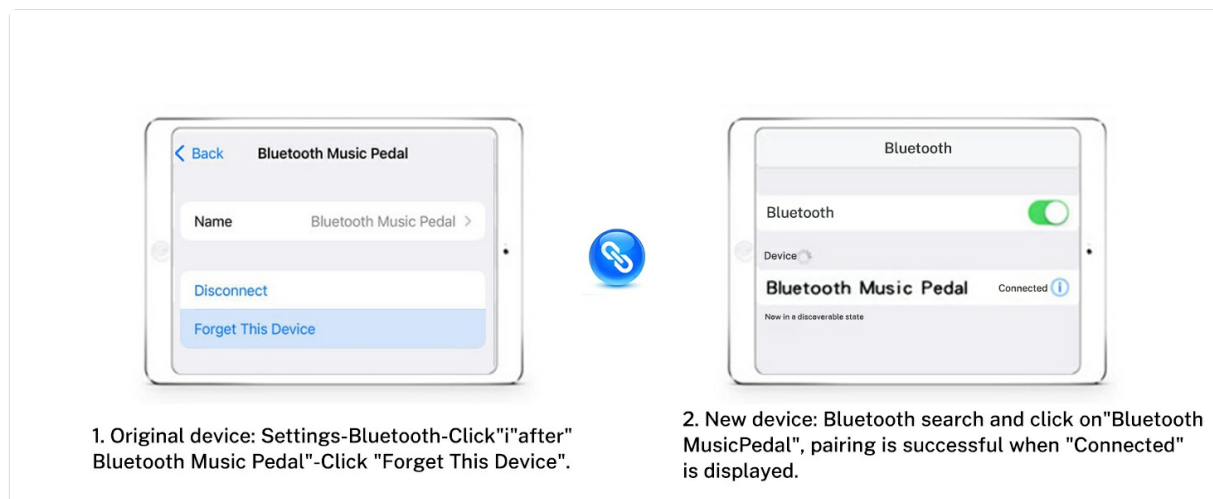


Figure 7: Instructions for re-pairing or connecting to a different device.

OPERATING MODES

The SPT-10 pedal offers 5 distinct modes, each configured for different control actions. Select the appropriate mode based on your application's requirements.

- **Mode 1 (Up & Down):** Left pedal acts as Page Up, Right pedal acts as Page Down.
- **Mode 2 (Left & Right Arrow):** Left pedal acts as Left Arrow, Right pedal acts as Right Arrow.
- **Mode 3 (Up & Down Arrow):** Left pedal acts as Up Arrow, Right pedal acts as Down Arrow.
- **Mode 4 (Mouse Click):** Left pedal acts as Left Mouse Click, Right pedal acts as Right Mouse Click.
- **Mode 5 (Keyboard):** Left pedal acts as Space-bar, Right pedal acts as Enter.

Repeat Function

The 'REPEAT' switch allows for continuous scrolling. When 'REPEAT' is ON, pressing and holding a pedal will continuously trigger its assigned action (e.g., continuous page turning). When 'REPEAT' is OFF, each press of the pedal will trigger a single action.

Your browser does not support the video tag.

Video 1: Demonstration of the Wireless Page Turner Pedal's various modes and repeat function.

COMPATIBILITY

The SPT-10 pedal is compatible with a wide range of operating systems and applications:

- **Operating Systems:** iOS, Android, HarmonyOS, Windows.
- **Recommended Apps (iOS):** PiaScore, Imslp, iBooks, Henle, NextPage, SongBook, MusicReader, OnSong, DigitalScore, Musicnotes, UnrealBook (paid), ForScore (paid).
- **Recommended Apps (Android/HarmonyOS):** WPS, PDF Reader, OnSong, YiBook.



Figure 8: The pedal offers broad compatibility with multiple operating systems and applications.

MAINTENANCE

To ensure the longevity and optimal performance of your STRICH SPT-10 pedal, follow these maintenance guidelines:

- Keep the device clean and dry. Avoid exposure to excessive moisture or extreme temperatures.
- Charge the pedal fully before extended periods of non-use.
- If the battery indicator turns red, recharge the pedal promptly to protect battery health.
- Store in a cool, dry place when not in use.

TROUBLESHOOTING

Connection Issues

- **Device Not Found:** Ensure the pedal is powered on and within the 10m (33ft) wireless range. Check your device's Bluetooth settings to confirm it's searching for devices.
- **Unable to Pair:** If the pedal was previously paired with another device, 'Forget This Device' on the old device before attempting to pair with a new one.
- **Intermittent Connection:** Ensure there are no significant obstructions between the pedal and your device. Avoid strong electromagnetic interference.

Page Turning/Scrolling Problems

- **Incorrect Action:** Verify that the pedal is set to the correct operating mode (1-5) for your specific application. Different apps may respond differently to each mode.
- **No Response:** Check if the pedal is charged. Ensure the app you are using supports external page turners.
- **Too Many Pages Turned:** If using the 'REPEAT' function, ensure it is toggled OFF for single page turns. Adjust the pressure and duration of your foot press.

Battery Issues

- **Short Battery Life:** Ensure the pedal is fully charged (green indicator light). Charging time is approximately 3 hours.
- **Not Charging:** Verify the USB Type-C cable is securely connected to both the pedal and the power source. Try a different cable or power source if necessary.

SPECIFICATIONS

CUSTOMER CARE



Prompt Response

E-mail chat assistant response
within 24 hours



Warranty Services

Up to 12-month warranty



Return Policy

30-day free return

Figure 10: STRICH customer care details.