



Manuals.plus /

› WolfLawS /

› WolfLawS M5 Wired Gaming Mouse User Manual

**WolfLawS BX115**

# WolfLawS M5 Wired Gaming Mouse User Manual

Model: BX115

## INTRODUCTION

---

Thank you for choosing the WolfLawS M5 Wired Gaming Mouse. This high-precision optical gaming mouse is designed to enhance your gaming experience with its adjustable DPI, customizable RGB lighting, and programmable buttons. This manual provides detailed instructions for setup, operation, maintenance, and troubleshooting to ensure optimal performance.



Image: The WolfLawS M5 Wired Gaming Mouse, showcasing its ergonomic design and vibrant RGB lighting.

## KEY FEATURES

- **Adjustable DPI:** 6 adjustable DPI levels (1200/1600/2400/6400/7200/12800) for precise control.
- **Polling Rate:** 4 adjustable polling rates: 125Hz/250Hz/500Hz/1000Hz.
- **RGB Backlit Modes:** 12 distinct Chroma RGB backlit modes including DPI Breathing Effect, Cycle Breathing

Effect, Flowing Water Effect, and more.

- **Programmable Buttons:** 10 customizable buttons (Left, Right, Forward, Backward, DPI, Light Switch, Rapid Fire, Show Desktop, Browser, Scroll Wheel).
- **Ergonomic Design:** Advanced and unique design for comfortable grip and reduced fatigue during extended use.
- **Wide Compatibility:** Compatible with Windows XP/Vista/7/8/10, Mac OS X 10.4+, suitable for Notebook, PC, Laptop, Computer, Macbook. (Note: Driver software not compatible with Mac OS).
- **Durable Quality:** Tested for 5 million keystrokes, ensuring reliable durability.



Image: A banner illustrating the key features of the WolfLawS M5 Gaming Mouse, including its high DPI, RGB lighting, and ergonomic design.

## SETUP

1. **Unboxing:** Carefully remove the M5 Gaming Mouse and its user manual from the packaging.
2. **Connect to Device:** Plug the USB connector of the mouse into an available USB port on your computer (PC, Laptop, Macbook, etc.).
3. **Automatic Installation:** The operating system will typically detect and install the necessary drivers automatically.
4. **Driver Software (Optional):** For advanced customization of DPI, RGB modes, and programmable buttons, download the official driver software from the WolfLawS website. Refer to the user manual included in the box or contact WolfLawS support for the website address. (Note: Driver software is not compatible with Mac OS systems).

Your browser does not support the video tag.

Video: An unboxing and initial setup demonstration of the WolfLawS M5 Gaming Mouse, showing its components and how to connect it.



Image: The contents of the WolfLawS M5 Gaming Mouse package, including the mouse and user manual.

## OPERATING INSTRUCTIONS

### DPI Adjustment

The M5 mouse features 6 adjustable DPI levels to suit various gaming and work needs. Use the dedicated DPI button on the mouse to cycle through the preset DPI settings (1200/1600/2400/6400/7200/12800). The current DPI setting may be indicated by a change in the mouse's LED color, depending on your software configuration.



Image: A visual representation of the six adjustable DPI levels available on the WolfLawS M5 Gaming Mouse.

### RGB Backlit Modes

The M5 gaming mouse offers 12 distinct RGB backlit modes to enhance your setup. To activate the lights, ensure the light button at the bottom of the mouse is switched ON. You can then change the light effects by clicking the 'Light Switch' key on the mouse. For more advanced customization and to select specific lighting modes, utilize the official driver software.

- DPI Breathing Effect
- Cycle Breathing Effect
- Flowing Water Effect

- Mono Water Effect
- Comet Streak
- Neon
- Glittering Effect
- Flicker
- Star Trek
- Ripple
- Enraptured
- Button Response



Image: A display of the various customizable RGB lighting effects available on the M5 Gaming Mouse.

## Programmable Buttons

The M5 mouse is equipped with 10 buttons that can be customized using the official driver software. This allows you to assign specific functions, macros, or keybinds to each button, tailoring the mouse to your specific gaming or productivity needs. The buttons include: Left button, Right button, Forward, Backward, DPI button, Light Switch button, Rapid Fire, Show Desktop, Browser, and Scroll Wheel.



Image: A detailed diagram illustrating the location and function of the 10 programmable buttons on the WolfLawS M5 Gaming Mouse, alongside a preview of the driver software interface.

## MAINTENANCE

---

Proper maintenance ensures the longevity and optimal performance of your WolfLawS M5 Gaming Mouse.

- **Cleaning:** Use a soft, dry cloth to wipe down the mouse surface regularly. For stubborn dirt, slightly dampen the cloth with water or a mild electronic cleaner. Avoid using harsh chemicals or abrasive materials.
- **Sensor Care:** Keep the optical sensor on the bottom of the mouse clean and free from dust or debris to ensure accurate tracking.
- **Cable Management:** Avoid sharp bends or excessive pulling on the braided USB cable to prevent damage.
- **Storage:** When not in use, store the mouse in a clean, dry environment away from extreme temperatures.

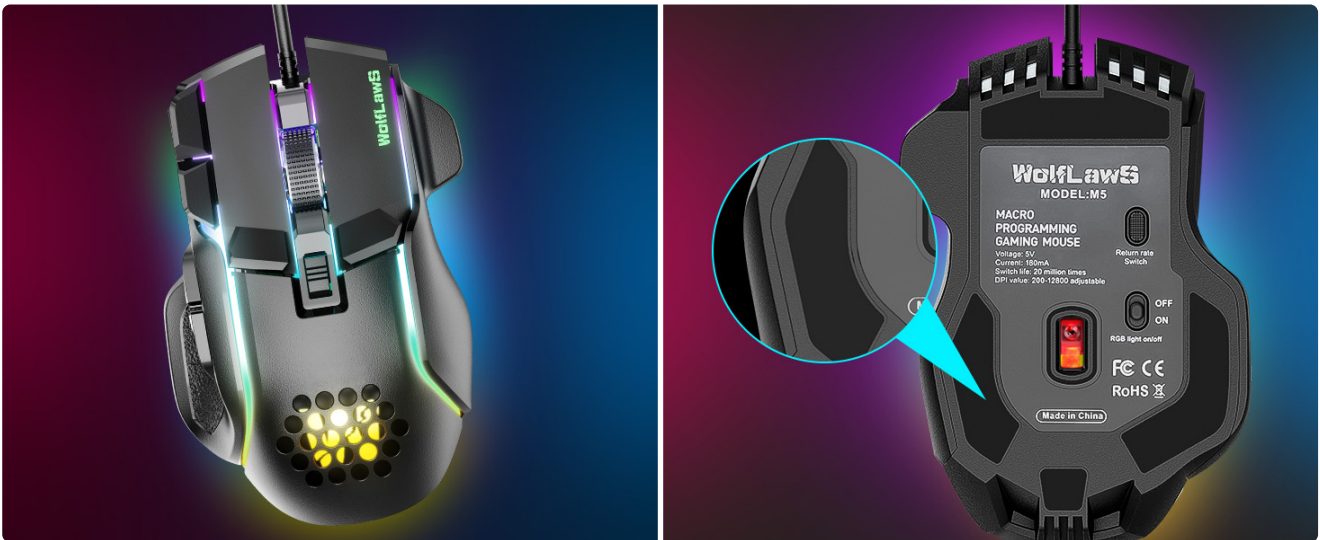


Image: An illustration highlighting the ergonomic design features of the WolfLawS M5 mouse, aimed at reducing hand fatigue and ensuring a stable, sweat-resistant grip.

## TROUBLESHOOTING

---

Problem	Possible Cause	Solution
Mouse not responding	Loose USB connection, faulty USB port, driver issue.	Ensure USB cable is securely plugged in. Try a different USB port. Restart your computer. Reinstall or update mouse drivers.
Lights not working	Light switch off, software setting, power issue.	Check the light switch at the bottom of the mouse and ensure it is ON. Verify RGB settings in the driver software.
DPI/Buttons not changing	Incorrect button press, software not installed/configured.	Ensure you are pressing the correct DPI or programmable button. Install and configure the official driver software for full customization. (Remember: Mac OS does not support the driver software).
Mouse tracking is erratic	Dirty optical sensor, unsuitable surface.	Clean the optical sensor on the bottom of the mouse. Use the mouse on a clean, non-reflective mouse pad or surface.



Image: An illustration demonstrating the broad compatibility of the WolfLawS M5 Gaming Mouse across various operating systems.

## SPECIFICATIONS

---

Feature	Detail
Model Number	BX115
Connectivity Technology	Wired, USB
Movement Detection Technology	Optical
Adjustable DPI Levels	1200/1600/2400/6400/7200/12800
Polling Rate	125Hz/250Hz/500Hz/1000Hz
Programmable Buttons	10
RGB Backlit Modes	12 Chroma Modes
Product Dimensions	5.83 x 3.9 x 0.1 inches
Item Weight	6.7 ounces
Color	Black
Manufacturer	WolfLawS

## WARRANTY AND SUPPORT

---

WolfLawS products are manufactured to high-quality standards. For information regarding warranty coverage, technical support, or to download the latest driver software, please visit the official WolfLawS website or contact our customer service team. Contact details can typically be found in the original packaging or on the brand's official online presence.

We are committed to providing excellent products and support to our customers.