

## Schütte 82630-A

# Schütte Slim Toilet Seat Instruction Manual

Model: 82630-A

## INTRODUCTION

This manual provides comprehensive instructions for the installation, operation, and maintenance of your Schütte Slim Toilet Seat, Model 82630-A. Please read these instructions carefully before installation and retain them for future reference.

## PRODUCT FEATURES

- **Duroplast Material:** Constructed from durable, unbreakable Duroplast, designed to withstand up to 250 kg of load.
- **Soft-Close Mechanism:** Integrated automatic lowering system for silent and gentle closing of the lid and seat. Tested for 15,000 lowering cycles.
- **Quick-Release Function:** Allows for easy removal and reattachment of the toilet seat for thorough cleaning.
- **Universal Fit:** Designed to fit most standard toilet ceramics.
- **Easy Top-Fix Installation:** Patented adhesive pad technology and a mounting template simplify the installation process.

## PACKAGE CONTENTS

Verify that all components are present before beginning installation:

- Schütte Slim Toilet Seat (Lid and Ring)
- Mounting Hardware (screws, adhesive pads, anchors)
- Mounting Template
- Instruction Manual



Image: All components included in the package, showing the toilet seat, mounting screws, anchors, and the mounting template.

## SPECIFICATIONS

Attribute	Value
Model Number	82630-A
Material	Duroplast
Dimensions (L x W x H)	46.2 x 37.2 x 2.51 cm
Weight	2.11 kg
Load Capacity	Up to 250 kg
Soft-Close Cycles Tested	15,000

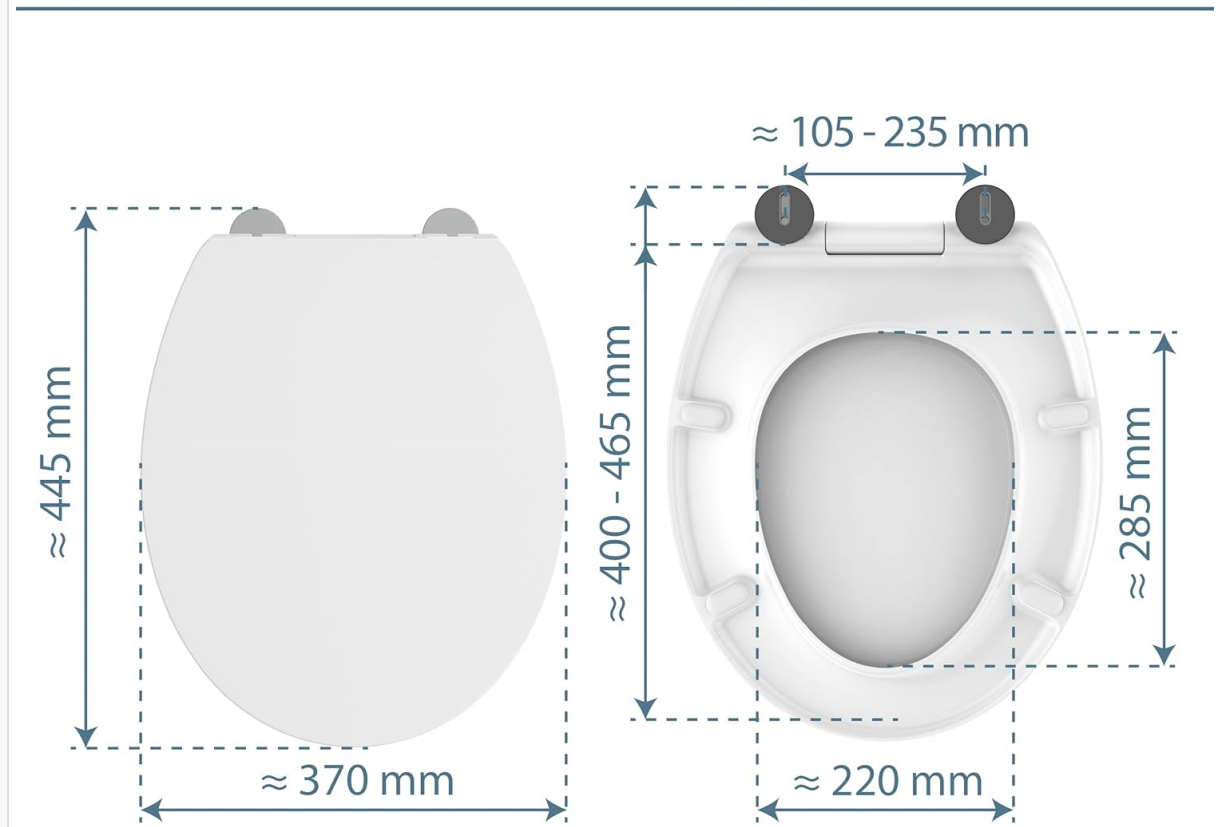
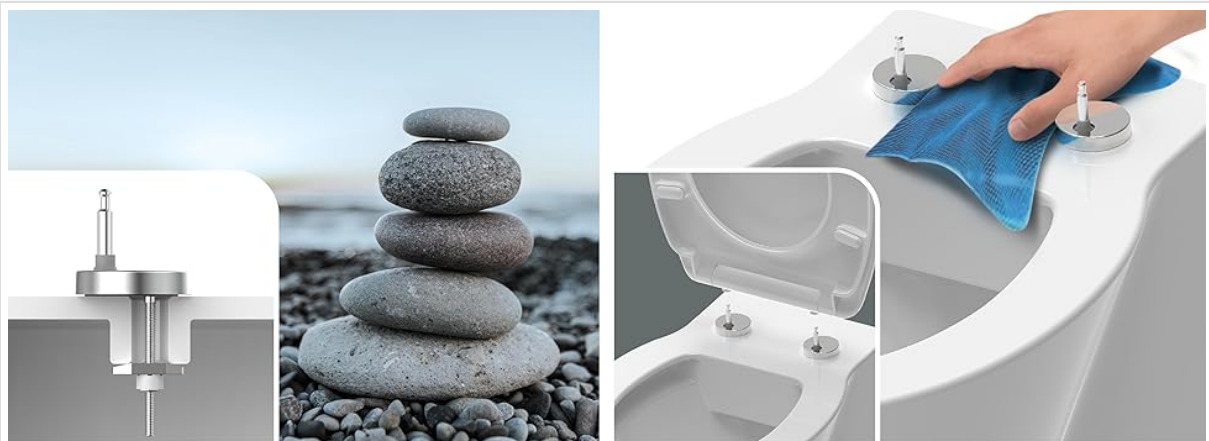


Image: Technical drawing showing the dimensions of the toilet seat, including length, width, and hinge spacing.



**RESTE DURABLE**  
antidérapant grâce à un tampon  
adhésif et une cheville basculante  
brevetée

**ENTRETIEN  
CONFORTABLE**  
facile à retirer

Image: Visual guide indicating the oval shape of the toilet seat, suitable for oval toilet bowls.

## INSTALLATION INSTRUCTIONS

Follow these steps for proper installation of your Schütte Slim Toilet Seat:

1. **Prepare the Toilet Bowl:** Ensure the toilet bowl surface where the seat will be mounted is clean and dry. Remove any old toilet seat and hardware.
2. **Position the Mounting Template:** Place the provided mounting template over the toilet bowl holes. This template assists in accurate alignment.
3. **Install Mounting Hardware:**
  - Insert the anchors into the toilet bowl holes.
  - Place the mounting bases over the anchors.
  - Secure the bases using the screws, ensuring they are tightened firmly but do not overtighten. The patented adhesive pads on the bases will help secure them.



charnières de très  
haute qualité

Image: Detail of the high-quality hinges and mounting points, showing the robust construction.



Image: Illustration demonstrating the top-fix installation process, where components are secured from above the

toilet bowl.

4. **Attach the Toilet Seat:** Align the toilet seat's quick-release hinges with the installed mounting bases. Press down firmly until you hear a click, indicating the seat is securely attached.
5. **Test Stability:** Gently try to move the seat to ensure it is stable and does not wobble. Adjust the mounting bases if necessary.



abattant WC en Duroplast

particulièrement  
résistant à la casse –  
supporte jusqu'à 250 kg

Image: The toilet seat positioned on a toilet bowl with the mounting template visible, illustrating the easy top-fix installation and alignment.

## OPERATION

### Soft-Close Function

The Schütte Slim Toilet Seat features an integrated soft-close mechanism. To operate, simply push the lid or seat downwards gently. The mechanism will engage, allowing the lid and seat to close slowly and silently without slamming.



Image: The toilet seat lid slowly closing, demonstrating the soft-close feature for silent operation.

## CARE AND MAINTENANCE

Regular cleaning will ensure the longevity and hygiene of your toilet seat.

### Quick-Release for Cleaning

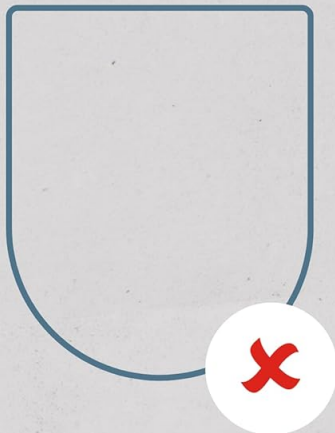
To thoroughly clean the toilet seat and the ceramic bowl underneath:

1. Locate the quick-release buttons or levers near the hinges.
2. Press or lift the buttons/levers to disengage the seat from the mounting bases.
3. Lift the entire toilet seat assembly off the toilet bowl.
4. Clean the seat and the toilet bowl using mild cleaning agents and a soft cloth. Avoid abrasive cleaners or harsh chemicals, as these can damage the Duroplast surface.
5. Once clean and dry, reattach the seat by aligning it with the mounting bases and pressing down until it clicks into place.

Trouve le siège WC qui te convient!

La forme convient-elle ?

Forme en D



Forme ovale



Forme en E

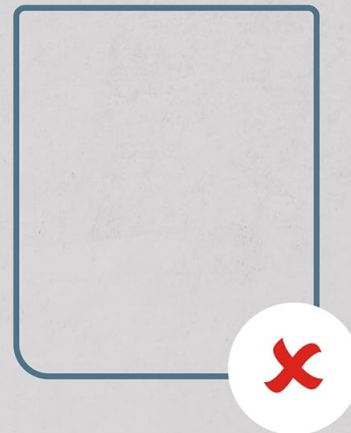


Image: A hand demonstrating the quick-release function, showing how the seat can be easily lifted off the mounting posts for cleaning.

## TROUBLESHOOTING

Problem	Possible Cause	Solution
Seat wobbles after installation.	Mounting screws are loose or not properly aligned.	Remove the seat, re-tighten the mounting screws, and ensure the bases are correctly aligned before reattaching the seat.
Soft-close function is not working smoothly.	Mechanism might be obstructed or damaged.	Ensure no debris is obstructing the hinges. If the issue persists, contact customer support.
Difficulty removing the seat for cleaning.	Quick-release buttons/levers not fully engaged or pressed.	Ensure the quick-release buttons/levers are fully pressed or lifted as per the design to disengage the seat.

## WARRANTY AND SUPPORT



Schütte provides a warranty for this product. For specific warranty details, please refer to the documentation included with your purchase or visit the official Schütte website.

For any questions regarding the product, installation, or claims, you may contact Schütte customer service:

- **Manufacturer:** Franz Joseph Schütte GmbH
- **Contact Number:** 05407-8152903
- **Website:** [www.schuette.de](http://www.schuette.de)



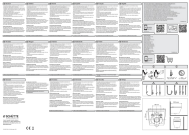
Image: Schütte brand image, emphasizing their commitment to quality and water-related products.

© 2025 Schütte. All rights reserved.

Related Documents - 82630-A

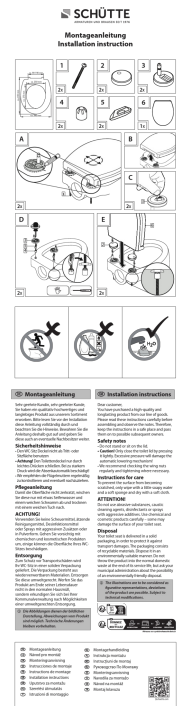
	<p><a href="#">SCHÜTTE WC Seat MDF with Soft-Close Mechanism - Installation Guide</a></p> <p>Comprehensive installation guide for the SCHÜTTE WC Seat MDF with soft-close mechanism, including safety, care, disposal, and step-by-step assembly instructions.</p>
	<p><a href="#">Schütte WC-Sitz MDF with Soft-Close: Installation Guide</a></p> <p>Comprehensive installation guide for the Schütte WC-Sitz MDF toilet seat featuring a soft-close mechanism. Includes safety, care, and disposal instructions.</p>
	<p><a href="#">Schütte WC-Sitz MDF HIGH GLOSS with Soft Close - Installation Guide</a></p> <p>Detailed installation instructions for the Schütte WC-Sitz MDF HIGH GLOSS toilet seat with automatic soft-close function. Includes safety, care, and disposal information.</p>
	<p><a href="#">SCHÜTTE WC Seat Installation Guide with Soft Close</a></p> <p>Comprehensive installation instructions for the SCHÜTTE WC-Sitz Holzkern with automatic soft-close mechanism. Includes safety, care, and disposal information, and detailed assembly steps.</p>





[SCHÜTTE FJS-BAD-DWC\\_93100 Shower Toilet Installation and User Manual](#)

Comprehensive installation and user manual for the SCHÜTTE FJS-BAD-DWC\_93100 shower toilet. This guide provides detailed instructions for setup, operation, and maintenance, including safety precautions, parts list, and functional descriptions.



[Schütte Toilet Seat Installation Guide \(Model 827xx\)](#)

Comprehensive installation instructions for the Schütte toilet seat, model 827xx, covering safety, care, and disposal.

--	--