

## Schütte 82600-A

# Schütte Duroplast WC-Seat with Soft-Close Mechanism and Quick Release (Model 82600-A) - Instruction Manual

Brand: Schütte | Model: 82600-A

## 1. INTRODUCTION

This instruction manual provides comprehensive guidance for the installation, operation, and maintenance of your new Schütte Duroplast WC-Seat, Model 82600-A. Please read this manual carefully before installation and use to ensure proper function and longevity of the product. Keep this manual for future reference.

### Key Features:

- Duroplast material for durability and hygiene.
- Integrated soft-close mechanism for silent closing.
- Quick-release function for easy cleaning.
- Top-fix installation for convenience.

## 2. PACKAGE CONTENTS

Before beginning installation, verify that all components are present:

- Schütte Duroplast WC-Seat (Lid and Ring)
- Mounting material (hinges, screws, washers, expansion anchors)
- Installation instructions (this manual)



**Figure 2.1:** Schütte Duroplast WC-Seat with its packaging, highlighting key features like Duroplast material, soft-close mechanism, and quick release.

### 3. SPECIFICATIONS

Model Number	82600-A
Material	Duroplast, Stainless Steel hinges
Dimensions (L x W x H)	Approx. 44.5 x 37.5 x 5 cm
Weight	Approx. 1.8 kg
Hinge Spacing	Approx. 55 - 170 mm (adjustable)
Features	Soft-close mechanism, Quick-release, Top-fix installation

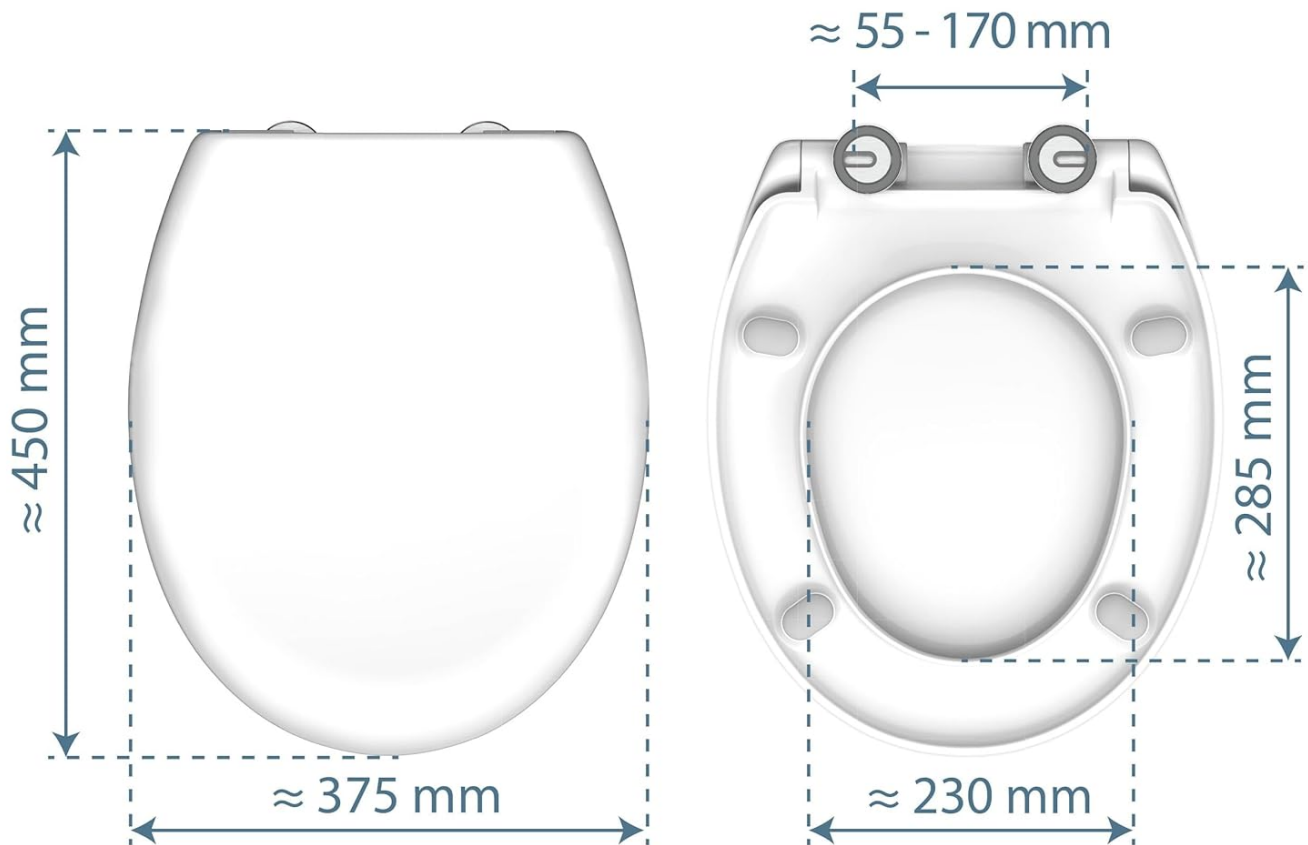


Figure 3.1: Detailed dimensions of the Schütte WC-Seat, including length, width, and adjustable hinge spacing.

## 4. SETUP AND INSTALLATION

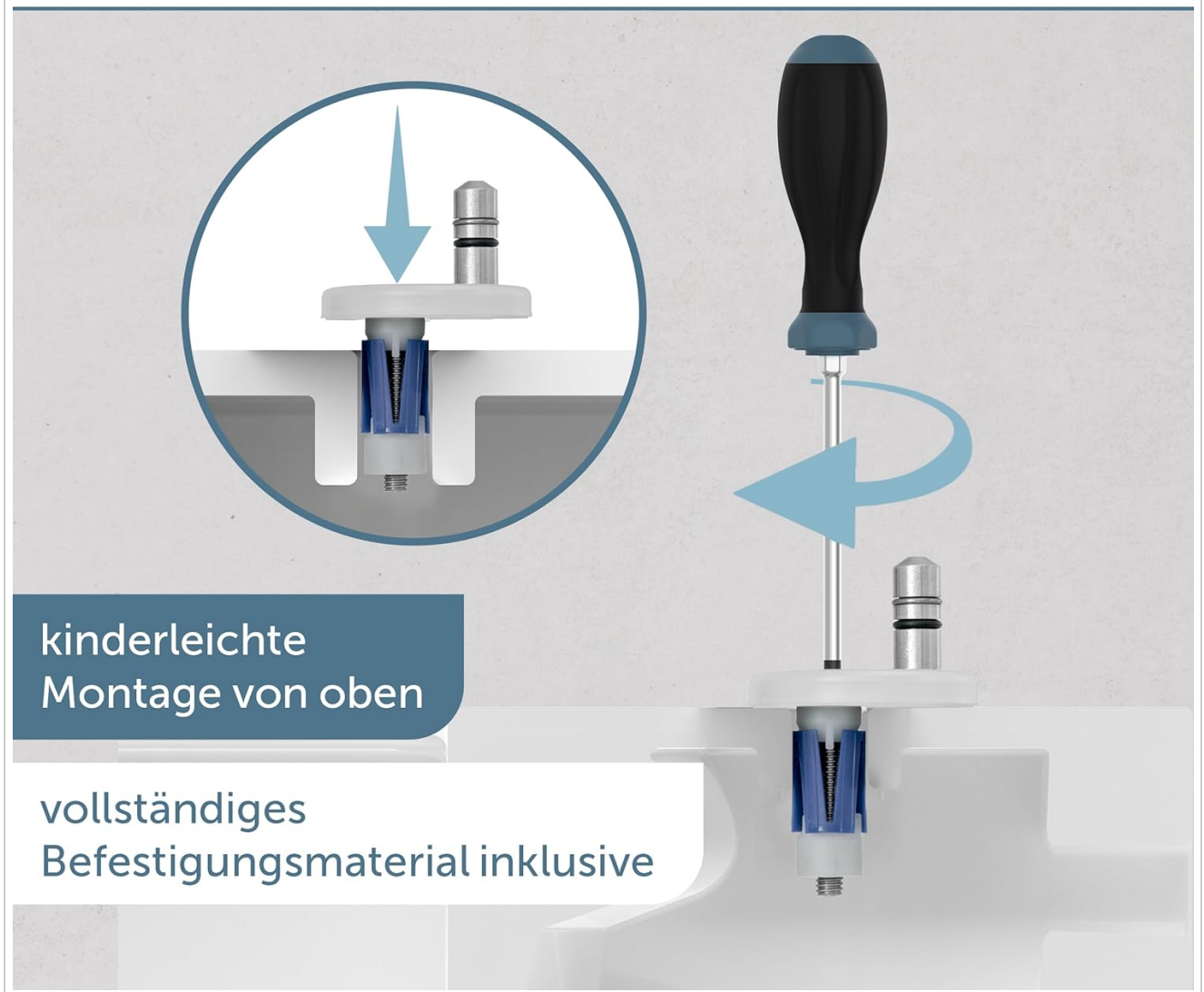
**Tools Required:** Screwdriver (Phillips or flathead, depending on screw type), measuring tape.

1. **Prepare the Toilet Bowl:** Ensure the toilet bowl is clean and dry. Remove any old toilet seat and mounting hardware.
2. **Insert Expansion Anchors:** Place the expansion anchors into the mounting holes on the toilet bowl.
3. **Position Hinges:** Insert the hinge posts through the mounting plates and then into the expansion anchors. Adjust the hinge spacing to match the holes on your toilet bowl (approx. 55-170 mm).



**Figure 4.1:** Components for the top-fix installation, showing the hinge posts, mounting plates, and expansion anchors.

4. **Secure Hinges:** From the top, use a screwdriver to tighten the screws in the hinge posts. This will expand the anchors, securing the hinges firmly to the toilet bowl. Do not overtighten.



**Figure 4.2:** Demonstrates securing the top-fix hinges using a screwdriver, ensuring a stable attachment to the toilet bowl.

5. **Attach WC-Seat:** Align the mounting points on the underside of the WC-seat with the secured hinge posts. Press down firmly until you hear a click, indicating the seat is locked into place.



**Figure 4.3:** The Schütte WC-Seat fully installed on a modern toilet, showcasing its clean design.

6. **Test Stability:** Gently try to move the seat to ensure it is securely attached and does not wobble.

## 5. OPERATING INSTRUCTIONS

---

Your Schütte WC-Seat is designed for ease of use and comfort.

### 5.1 Soft-Close Mechanism

The integrated soft-close feature allows the toilet lid and seat to close gently and silently. Simply push the lid or seat downwards slightly, and it will lower itself automatically without slamming.





**Figure 5.1:** Illustrates the soft-close function, showing the toilet seat and lid gently lowering without manual assistance.

**Important:** Do not force the lid or seat closed, as this can damage the soft-close mechanism.

## 6. MAINTENANCE AND CLEANING

Regular cleaning will ensure the hygiene and longevity of your WC-seat.

### 6.1 Quick-Release Function for Cleaning

The quick-release function allows for easy removal of the seat for thorough cleaning of both the seat and the toilet bowl area.

1. **Release the Seat:** Locate the quick-release buttons or levers near the hinges on the underside of the seat. Press or slide them to disengage the seat from the hinge posts.
2. **Remove the Seat:** Lift the entire WC-seat straight up from the hinge posts.



**Figure 6.1:** Shows the quick-release mechanism, allowing the toilet seat to be easily detached from its hinges for comprehensive cleaning.

3. **Clean:** Clean the WC-seat and the toilet bowl area using mild soap and water. Avoid abrasive cleaners, strong chemicals, or scouring pads, as these can damage the Duroplast surface.
4. **Reattach the Seat:** Align the seat with the hinge posts and press down until it clicks securely into place.

## 6.2 General Cleaning

For daily cleaning, wipe the seat and lid with a soft, damp cloth and a mild, non-abrasive cleaner. Rinse thoroughly and dry with a soft cloth.

## 7. TROUBLESHOOTING

Problem	Possible Cause	Solution
Seat wobbles or is loose.	Hinges are not tightened sufficiently.	Remove the seat using the quick-release function. Re-tighten the screws in the hinge posts. Reattach the seat.



Soft-close mechanism not working.	Mechanism is damaged or obstructed.	Ensure no foreign objects are obstructing the hinges. Avoid forcing the lid/seat closed. If damaged, contact customer support.
Seat difficult to remove for cleaning.	Quick-release buttons/levers not fully engaged.	Ensure quick-release buttons/levers are fully pressed or slid to release the seat.

## 8. WARRANTY AND SUPPORT

Your Schütte WC-Seat, Model 82600-A, comes with a **5-year warranty**. This warranty covers manufacturing defects and material faults under normal use conditions.

For warranty claims, technical support, or replacement parts, please contact Schütte customer service. Refer to the product packaging or the official Schütte website for contact information.

Please have your model number (82600-A) and date of purchase available when contacting support.

