

TEEHO TE001K

TEEHO TE001K Keyless Entry Door Lock User Manual

Model: TE001K | Brand: TEEHO

PRODUCT OVERVIEW

The TEEHO TE001K Keyless Entry Door Lock with Handle is an advanced electronic keypad deadbolt designed for high-security and convenience in homes and rental properties. It features multiple access options, smart locking capabilities, and a durable construction to ensure reliable performance.

This set includes a keypad deadbolt lock and two passage door knobs, offering a complete solution for your entryways. Its satin nickel finish provides a modern and sleek appearance.



Figure 1: TEEHO TE001K Keyless Entry Door Lock with Handle in Satin Nickel.

SETUP AND INSTALLATION

The TEEHO TE001K lock is designed for easy installation on most standard residential doors. Ensure your door meets the following specifications:

- **Door Preparation:** 1" (25.4mm) for cross bore, 2-1/8" (54mm) for bore hole.
- **Door Thickness:** 1-3/8" to 2" (35mm to 50mm).
- **Backset:** 2-3/8" or 2-3/4" (60mm or 70mm).

Function & Security

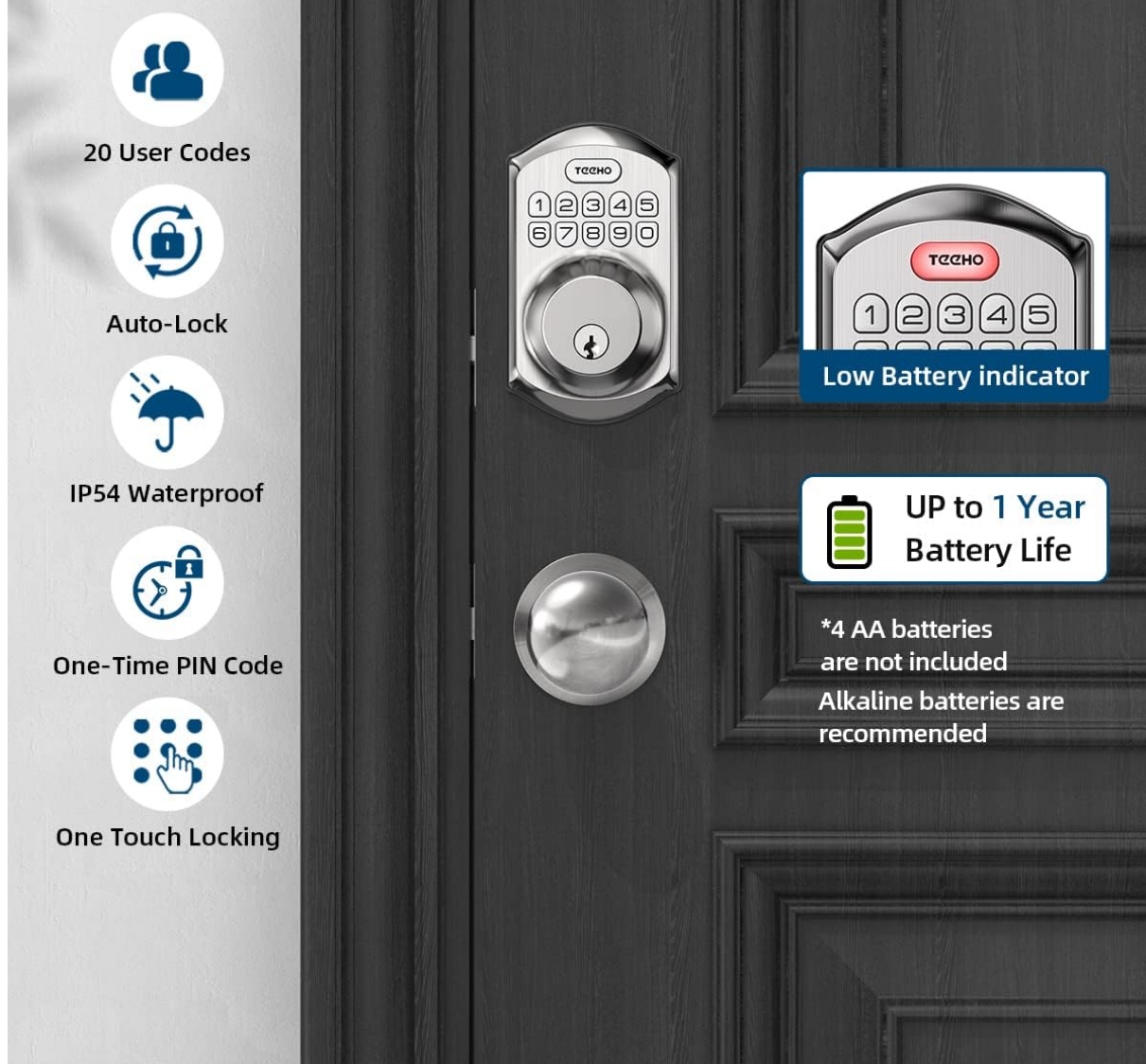


Figure 2: Door dimensions and lock components for installation.

Battery Installation

The lock requires 4 AA (1.5V) alkaline batteries (not included). Install them in the interior assembly of the deadbolt. The lock features a low battery indicator to alert you when replacement is needed.

For detailed step-by-step installation instructions, please refer to the [Installation Manual \(PDF\)](#).

OPERATING INSTRUCTIONS

Keyless Entry

The TEEHO TE001K offers convenient keyless access with up to 20 programmable access codes (4-10 digits). Two physical keys are also included for traditional entry.



Up to 21 PIN Codes

20+1 Up to 21 different PIN Codes & 2 Physical keys Unlock



- 20 User Codes
- One-time Pin Code
- 2 Physical keys

Figure 3: Keypad with multiple user code and one-time PIN code capabilities.

One-Time Code Feature

Generate one-time access codes for temporary visitors such as neighbors, cleaners, or delivery personnel. These codes are automatically deleted after a single use, enhancing security.

Fits on Most Standard Doors



Left-Handed Door



Right-Handed Door

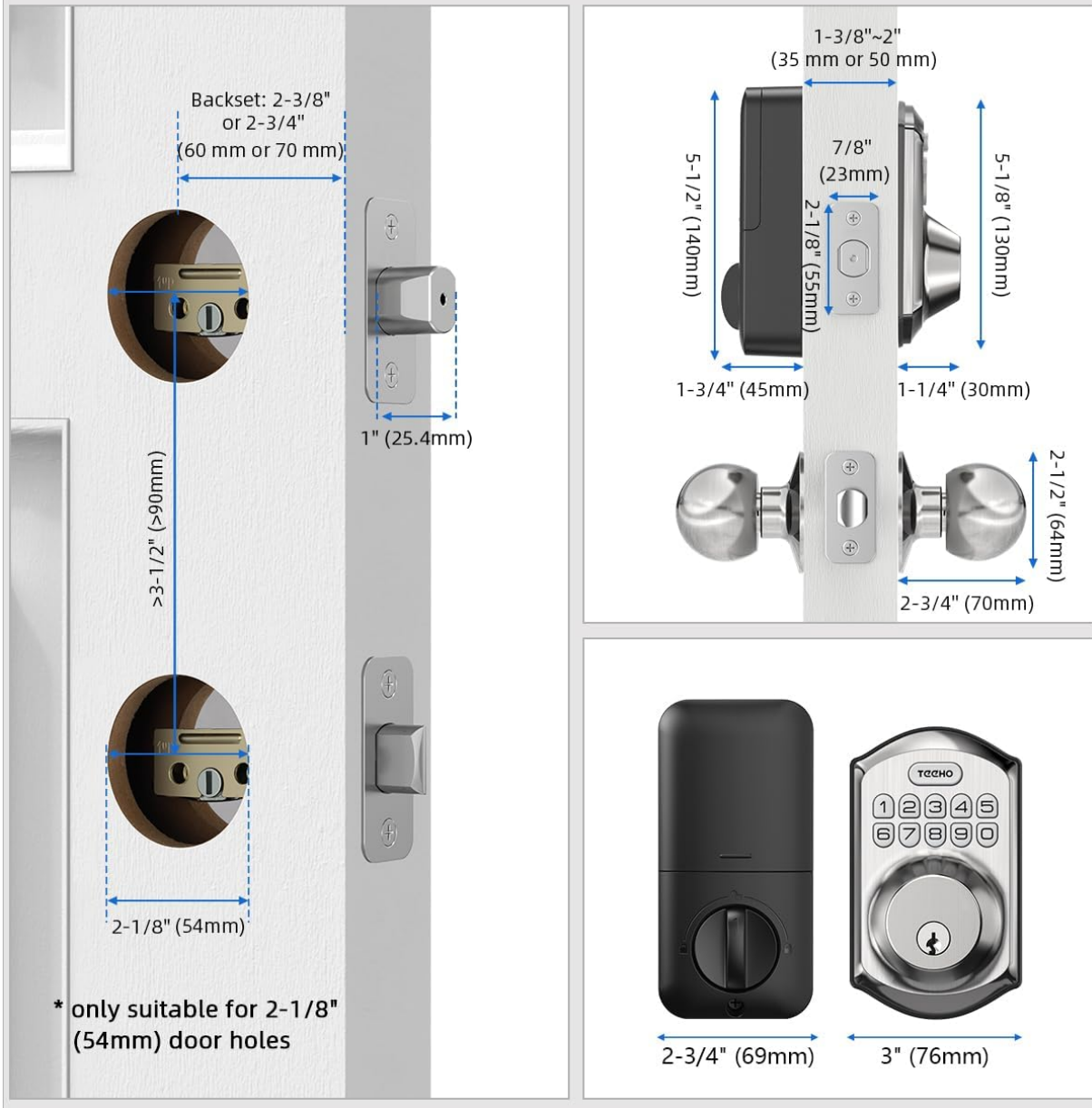


Figure 4: Example of using a one-time PIN code for temporary access.

Smart-Locking Features

- **Auto-Lock:** The lock can be configured to automatically lock within 10-99 seconds after the door closes. This feature can be disabled if preferred.
- **Manual Locking:** From the outside, hold any key on the keypad for 2 seconds to manually lock the door.
- **Anti-Peeping Password:** Enter random digits before or after your actual code to prevent others from guessing your passcode.
- **Backlit Keypad:** The keypad illuminates for easy visibility in low-light conditions.
- **Mute Mode:** Silence keypad tones for quiet operation.
- **Vacation Mode:** Disable all user codes for enhanced security when you are away for an extended

period.

Auto-lock & One-touch Locking

10-99 Seconds Auto Lock &
2 Seconds One-touch Lock



*Door konbs are included in the package

Figure 5: Auto-lock and one-touch manual lock functionality.

Anti-peep Tactile Keypad

6421 **51381** 9352

Password

Random digits-----

Add random digits to protect your passcode from prying eyes. Easy to use with the backlight at night.



Note: The front deadbolt with knob is Satin Nickel and the rear is black.



Figure 6: Anti-peeping password feature with backlit keypad.

Video Demonstration: How to Unlock and Lock

Your browser does not support the video tag.

Video 1: This video demonstrates the process of unlocking and locking the TEEHO TE001K Keyless Entry Door Lock using the keypad.

MAINTENANCE

Battery Management

The lock is powered by 4 AA alkaline batteries. It features a low battery indicator to notify you when the batteries need to be replaced. For optimal performance, it is recommended to use high-quality alkaline

batteries.

Durability and Weather Resistance

The TEEHO TE001K is built with durable aluminum and is ANSI Grade 3 certified, ensuring high security. It is designed to withstand various environmental conditions:

- **IP54 Weather Resistance:** Protects against dust and splashing water.
- **Temperature Range:** Operates effectively in temperatures from -31°F to 150.8°F (-35°C to 66°C).

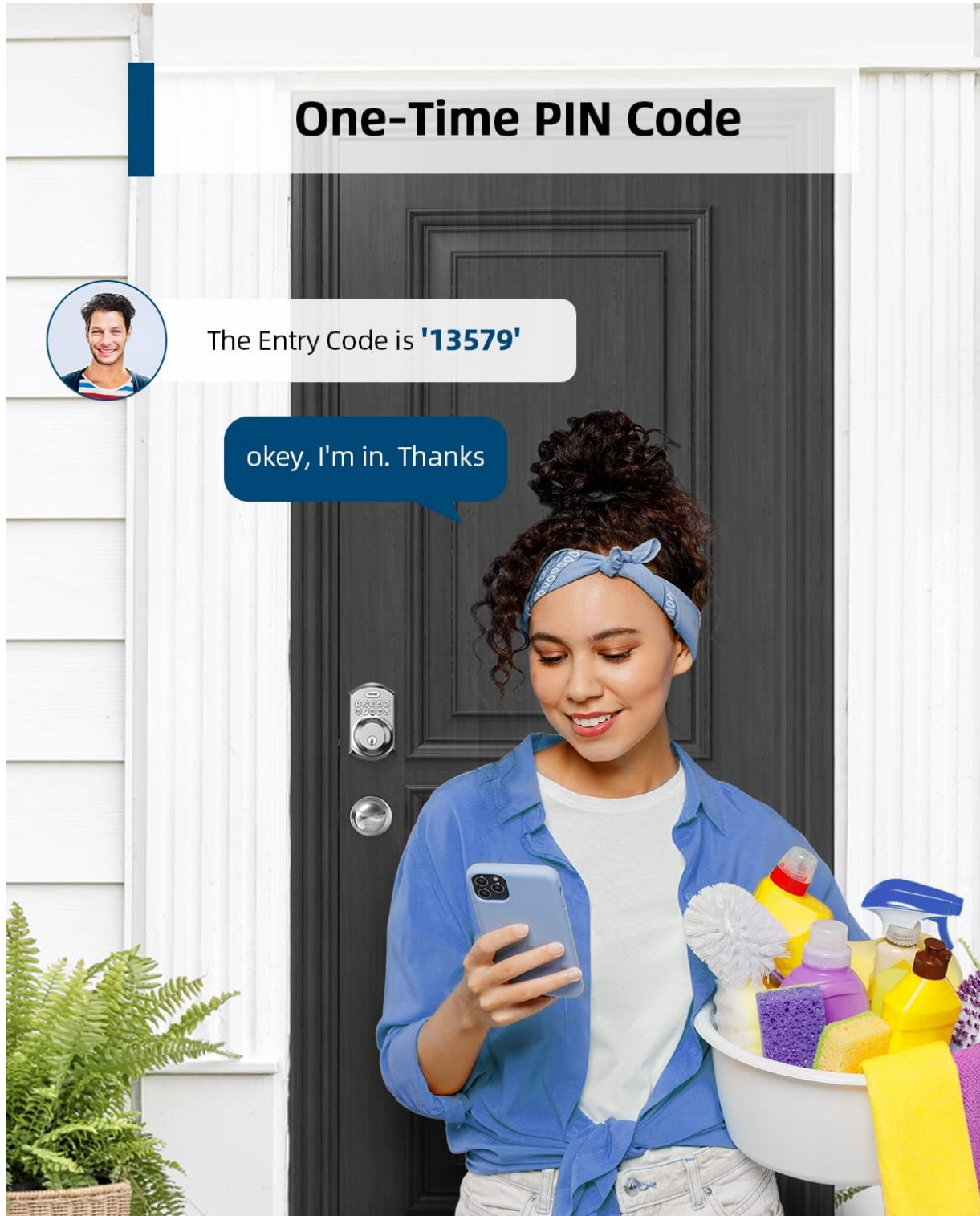


Figure 7: The lock's IP54 waterproof rating and temperature resistance.

TROUBLESHOOTING

If you encounter any issues with your TEEHO TE001K lock, please refer to the [User Guide \(PDF\)](#) for

detailed troubleshooting steps and solutions.

Common issues often relate to battery levels or incorrect code entry. Ensure batteries are fresh and codes are entered accurately.

SPECIFICATIONS

Feature	Detail
Brand	TEEHO
Model Name	TE001K
Lock Type	Keypad deadbolt with handle
Material	Aluminum
Color	Satin Nickel
Item Dimensions (L x W x H)	9.13 x 7.13 x 3.54 inches
Item Weight	2.91 Pounds
Special Features	Auto Lock, Anti-peeping Password, Back-lit Keypad, One-touch IP54, Vacation Mode, Mute Mode
Certification	ANSI Grade 3
Batteries Required	Yes (4 AA)

WARRANTY AND SUPPORT

TEEHO offers a 30-day customer commitment, 1-year product support on all parts, and lifetime after-sales customer service.

For assistance, you can reach TEEHO customer service via:

- **Online Phone Support:** Monday to Friday, 9 AM to 5 PM PST.
- **Online Email Service:** 24/7 availability.

For additional information and support, please consult the official [User Guide \(PDF\)](#).