

Amazon Echo Hub



Amazon Echo Hub

USER MANUAL

Your central control panel for a smarter home.

Introduction

The Amazon Echo Hub is an 8-inch smart home control panel designed to simplify the management of your connected devices. With Alexa built-in, you can control lights, smart plugs, view camera feeds, and more, either by voice command or through the intuitive touch display. This manual provides essential information for setting up, operating, maintaining, and troubleshooting your Echo Hub.

Setup

1. Unboxing and Components

Before you begin, ensure all components are present:

- Echo Hub device
- Power adapter (12.5W) and 6 ft. (1.8m) cord
- Wall mount
- Anchors and screws
- Mounting template
- Quick start guide

Note: A stand for tabletop use is sold separately. The device is not intended for handheld or portable use.

2. Installation Options

The Echo Hub offers flexible installation:

- **Wall Mounting:** Use the included wall mount, anchors, and screws. An electric drill is required. For a cleaner look, consider in-wall cable pass-throughs or a Power-over-Ethernet (PoE) adapter (both sold separately).
- **Tabletop Placement:** If using a stand (sold separately), simply place the Echo Hub on a flat surface.



Press the mic off button
to disconnect the microphones

The Echo Hub is designed for easy wall mounting, providing a sleek and integrated look for your smart home control.

3. Power Connection

Connect the included power adapter to the Echo Hub and plug it into a wall outlet. Ensure the power supply complies with USB PD protocol and supports both 5V/2.4A and 9V/3A ratings.

For PoE installations, a compatible USB-C converter is required, supporting IEEE 802.3at/PoE+/Type2 or IEEE 802.3bt/PoE++/Type 3.

4. Initial Setup and Connectivity

Setup requires an internet connection via Wi-Fi or Ethernet. The Alexa app is compatible with Fire OS, Android, and iOS devices, and is also accessible via your web browser.

- **Wi-Fi:** The Echo Hub supports dual-band Wi-Fi (802.11a/b/g/n/ac). It does not support ad-hoc or peer-to-peer Wi-Fi networks.
- **Amazon Wi-Fi Simple Setup:** This feature allows for easy connection of smart devices to your Wi-Fi network.
- **Alexa App:** Follow the on-screen prompts on your Echo Hub and in the Alexa app to complete the setup process, connect to your Wi-Fi network, and link your Amazon account.

Operating Your Echo Hub

The Echo Hub is designed for intuitive control of your smart home.

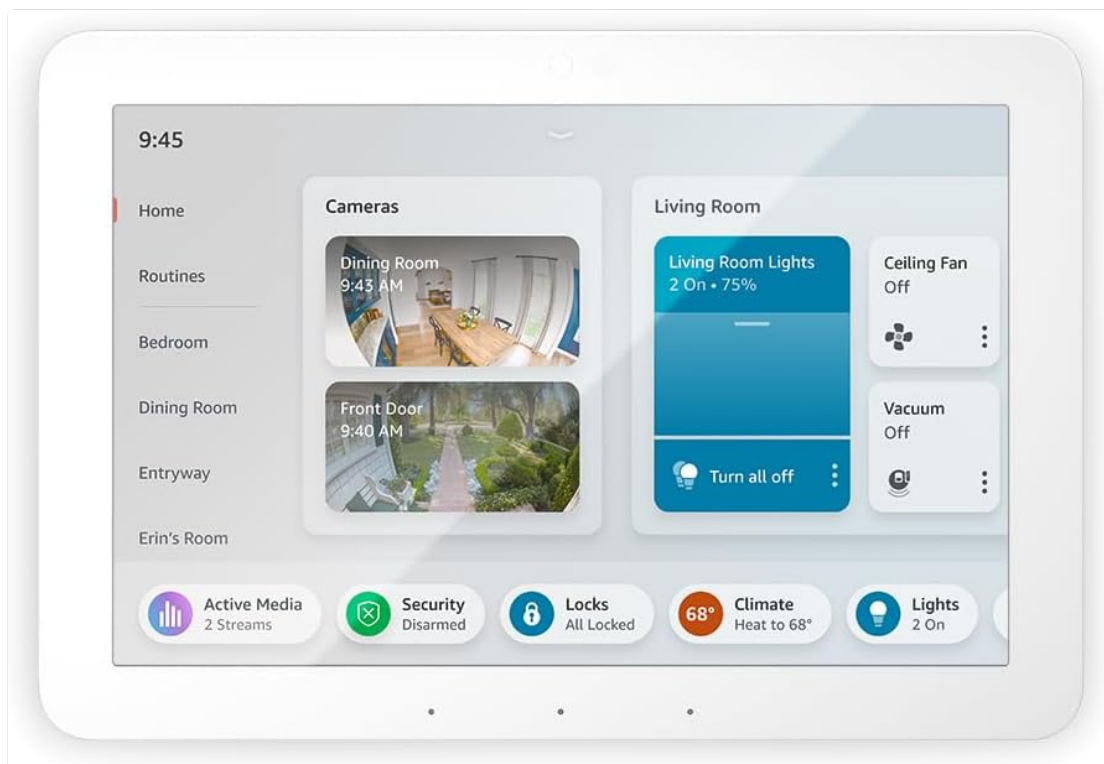
1. Smart Home Control

The Echo Hub allows you to manage thousands of Alexa-compatible devices. You can control lights, smart plugs, thermostats, and more.



The Echo Hub's main screen provides an overview and quick access to your smart home devices, including lighting, climate, and security.

- **Touch Display:** Tap the display to adjust devices, view cameras, and start routines.
- **Voice Control:** Use Alexa voice commands for hands-free control. For example, "Alexa, turn on the living room lights."
- **Customization:** Customize the controls and widgets displayed on your dashboard for quick access to your most used features.



View live camera feeds and manage specific room controls directly from the Echo Hub interface.

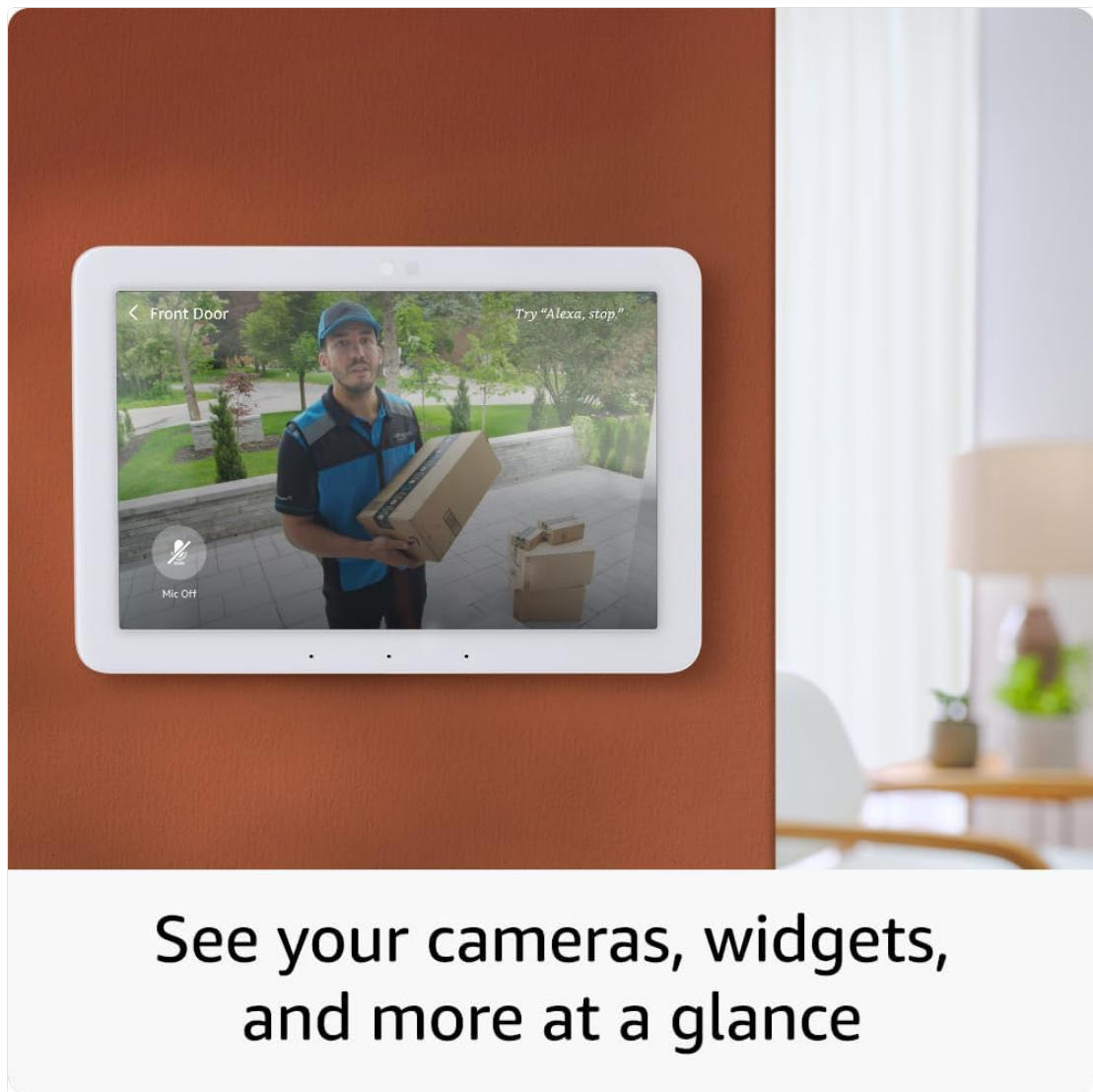


"Alexa, dim the lights."

Voice commands make controlling your smart home devices simple and convenient.

2. Camera Feeds and Security

View live feeds from compatible smart cameras and manage your home security system.



See your cameras, widgets, and more at a glance

Quickly check camera feeds and access security features from your Echo Hub.

- **Camera Monitoring:** Access live camera feeds from compatible devices directly on the Echo Hub display.
- **Security System Integration:** Arm and disarm your compatible security system. Use the Alexa app and compatible cameras, locks, alarms, and sensors to check in while you're away.



"Alexa, arm my home."

Manage your Ring security system directly from the Echo Hub, including arming and disarming.

3. Audio Playback

Connect your preferred speaker to Echo Hub to play music, audiobooks, and podcasts in any room.

- **Bluetooth Connectivity:** Supports Advanced Audio Distribution Profile (A2DP) for streaming audio from your mobile device to Echo Hub or from Echo Hub to your Bluetooth speaker. Audio/Video Remote Control Profile (AVRCP) for voice control of connected Bluetooth speakers.

4. Privacy Features

The Echo Hub is designed with multiple layers of privacy controls.

- **Microphone Off Button:** A physical button to electronically disconnect the microphones.
- **Voice Recordings:** Ability to view and delete your voice recordings.
- **Streaming Indicators:** Visual indicators when streaming is active.



The dedicated microphone off button ensures your privacy by physically disconnecting the microphones.

For more information, visit the [Alexa Privacy Hub](#).

5. Accessibility Features

The Echo Hub includes various accessibility features to personalize Alexa to your abilities. Access these settings via **Settings** → **Accessibility** on your device.

- **Tap to Alexa:** Access Alexa via touch (on-screen tiles or keyboard).
- **Adaptive Listening:** Provides more time to finish speaking before Alexa responds.
- **Preferred Speaking Rate:** Control how fast or slow Alexa speaks.
- **Captioning:** Alexa Captioning, Call Captioning, and Closed Captioning for supported content.
- **VoiceView screen reader:** For blind or visually impaired users.
- **Screen Magnifier:** Zoom in/out and pan around the screen.
- **Notify When Nearby:** Plays notification sounds when detected near the device.
- **Kindle Read Aloud:** Have Alexa read your Kindle books aloud.
- **Real Time Text:** Type live text in a video call.
- Additional settings for Color Inversion, Color Correction, Request Sound, and more.

Maintenance

1. Software Updates

Your Echo Hub receives guaranteed software security updates for at least four years after its last availability for purchase as a new unit. These updates ensure optimal performance and security.

For information specific to your device, visit [Manage Your Content and Devices](#).

2. Cleaning Instructions

To maintain the display and casing of your Echo Hub:

- Gently wipe the screen with a soft, lint-free cloth.
- For the device casing, use a dry, soft cloth.
- Avoid using abrasive cleaners, solvents, or aerosol sprays, as these may damage the device.

Troubleshooting

If you encounter issues with your Echo Hub, consider the following common solutions:

- **Connectivity Issues:**
 - Ensure your Wi-Fi network is active and the Echo Hub is within range.
 - Restart your Wi-Fi router and the Echo Hub.
 - Verify your Wi-Fi password in the Alexa app.
- **Device Responsiveness:**
 - Ensure the device is receiving adequate power. Check the power adapter connection.
 - If the screen is unresponsive, try restarting the device by unplugging it for a few seconds and plugging it back in.
- **Smart Home Device Compatibility:**
 - Ensure your smart home devices are compatible with Alexa and the Echo Hub's built-in hubs (Wi-Fi, Bluetooth Low Energy Mesh, Zigbee, Thread, Matter).
 - Visit the [help page](#) for troubleshooting compatible devices.
- **Audio Issues:**
 - Check volume settings on the Echo Hub and any connected Bluetooth speakers.
 - Ensure Bluetooth speakers are properly paired.

If problems persist, consult the [Amazon support website](#) or contact customer service.

Specifications

Feature	Description
Display	8" touch screen with 1280 x 800 resolution
Audio	Pair of top ported full range speakers, with stereo playback
Sensors	Passive infrared (PIR) sensor for proximity detection, ambient light sensor (ALS)
Wi-Fi Connectivity	Dual-band Wi-Fi supports 802.11 a/b/g/n/ac networks. Does not support ad-hoc or peer-to-peer networks.

Bluetooth Connectivity	A2DP support for audio streaming, AVRCP for voice control of connected Bluetooth speakers. HFP not supported.
Smart Home Compatibility	Compatible with Wi-Fi, Bluetooth Low Energy Mesh, Zigbee, Thread, and Matter devices (as controller only).
Amazon Sidewalk	Uses Echo and Ring devices to securely keep other devices connected and help find lost items. Can be turned off.
Processor	MediaTek MT 8169 A
Size (W x H x D)	7.9" x 5.4" x 0.6" (202 mm x 137mm x 15mm)
Weight	12.9 ounces (365 grams)
Power Requirements	Compatible with USB-C PD power accessories (5V/2.4A and 9V/3A ratings).
Power over Ethernet (PoE)	Supports PoE with compatible USB-C converter (IEEE 802.3at/PoE+/Type2 or IEEE 802.3bt /PoE++/Type 3).
System Requirements	Internet via Wi-Fi or Ethernet. Alexa app compatible with Fire OS, Android, iOS, and web browser.
Language	Alexa speaks English and Spanish.

Warranty and Support

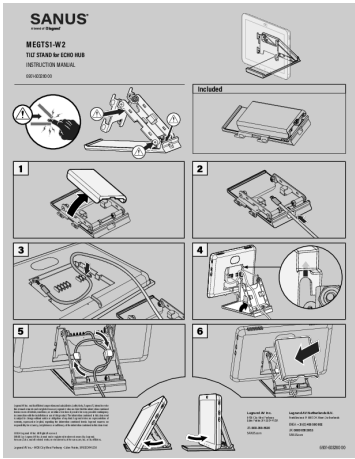
1. Limited Warranty

The Echo Hub comes with a 1-year limited warranty and service included. Optional 1-year, 2-year, and 3-year extended warranties are available for U.S. customers (sold separately).

Use of Echo Hub is subject to the terms found [here](#).

2. Service Availability

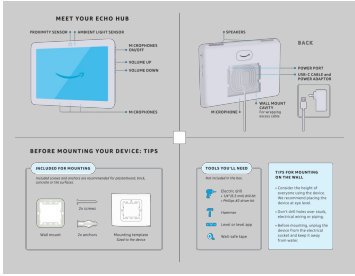
Certain services and skills are subject to change or withdrawal at any time, may not be available in all areas and languages, and may require compatible devices. Some skills and services may require subscriptions or other fees.



[SANUS MEGTS1-W2 Tilt Stand for Echo Hub: Installation Manual](#)

Official instruction manual for the SANUS MEGTS1-W2 Tilt Stand, designed for the Amazon Echo Hub. Provides step-by-step installation guidance and product information.

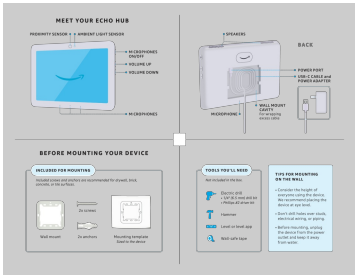
lang:en score:27 filesize: 1.01 M page_count: 1 document date: 2024-03-22



[\[pdf\] Quick Start Guide Guide](#)

22 004841 01 EchoHub Online QSG AUNZ Echo Hub Quick Start Guide Guides for Alexa Enabled Devices Amazon Customer Service d1ergij2b6wmg5 cloudfront net S3 Cloudfront EFD |||

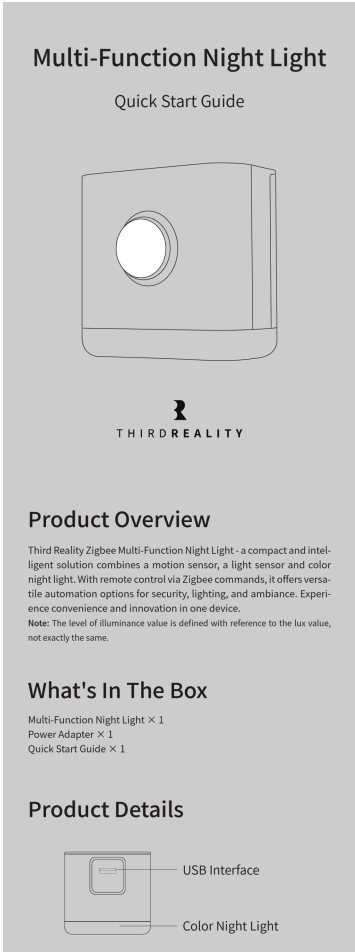
...
lang:en score:25 filesize: 811.87 K page_count: 3 document date: 2023-07-10

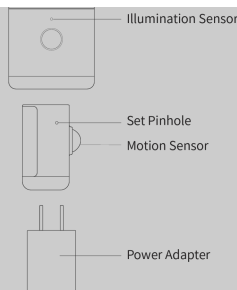


[\[pdf\] Quick Start Guide Guide](#)

22 004835 01 EchoHub Online QSG EN Echo Hub Quick Start Guide Guides for Alexa Enabled Devices Amazon Customer Service USCA d1ergij2b6wmg5 cloudfront net S3 Cloudfront EFD |||

...
lang:en score:24 filesize: 805.74 K page_count: 3 document date: 2023-06-27





Specification

Dimension	2.6 x 1.6 x 2.5 inches
Color	White
Input	DC 5V 0.5A
Material	Plastic

LED Status Table

A: BOOTUP LED Status

LED	Color Scheme	Comments
First Blink	Green is Local Routine Enabled Red is Local Routine Disabled	Short press the pin hole will change the Local Routine Setup Status
Second Blink	Yellow is not paired Warm White is paired	Long press the pin hole will reset the pairing status
Status Check	Not Paired: On <=5s is illumination > min On >5s is illumination <=min Paired: check report Status (First paired - Default blue on and dim 2 times)	illumination > min means environment is light need to turn off automatically illumination <= min means environment is dark need to keep on and then If paired then go to RUNTIME status

B: Connect/Disconnect LED Status

LED	Color Scheme	Comments
Two Times	If LED is ON, dim two times (previous color) is indicate from disconnect to connect If LED is OFF, No Indication	The device will automatically Try reconnect
Three Times	If LED is ON, dim three times (previous color) is indicate from connect to disconnect If LED is OFF, No Indication	Long time has not been reconnected Try restarting your device or Hub

Setup

- Plug the night light into a power outlet using a USB-A power adaptor, it initially lights up green and turns yellow, indicating it is in pairing mode.
Note: It will exit pairing mode automatically if not successfully paired within 3 minutes, to put it into pairing mode again, press and hold the reset button through the pinhole for 5 seconds until it turns red, then release, the device will be reset and re-enter pairing mode.)
- Install the Zigbee hub & app on your device and log in, make sure the firmwares are up to date, and follow the instructions to set up the device.
- Once the pairing is successfully completed, the night light dims in blue twice then turn solid blue. You can change its brightness and color in the app.
- The motion sensor, illumination sensor, and color light of the multi-function night light will report their status information as individual sub-devices, facilitating the configuration of various routines and home automation tasks.

Local Routine

The product supports local routines where the light will turn on when both the illumination sensor and motion sensor meet the specified conditions (When the light is dim and detects human motion).

Short press the reset button through the pinhole to enable or disable the local routine function. Pressing the button once and seeing a green light indicates that the feature is currently enabled. Pressing the button again and seeing a red light indicates that the routine is disabled.

In both enabled and disabled states, motion sensor, illumination sensor, and color light will be reported synchronously.

Note that if you turn your Multi-Function Night Light on or off using your app or voice, Local Routine will be disabled for 12 hours.

Pairing with Different Hubs

Before pairing, use a pin to press into the pinhole and hold for 5 seconds until the LED turns red, then release to set the Multi-Function Night Light into pairing mode; Make sure the your hub's firmware and phone apps are up to date.

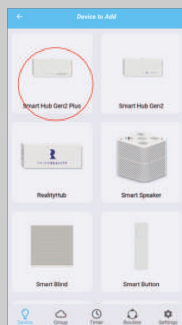
Pairing with Third Reality

Hub: Third Reality Hub Gen2 Plus
App: Third Reality

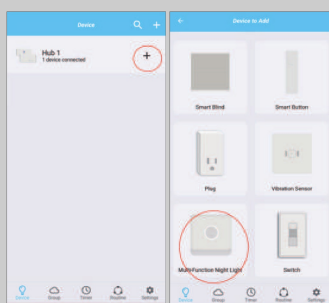


Pairing steps:

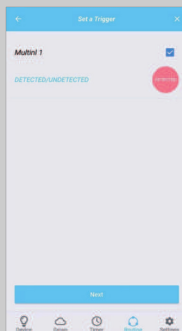
1. Tab "+" in Third Reality App, follow the on-screen instructions to add Smart Hub Gen2 Plus.



2. Tab "+" in the right of Smart Hub Gen2 Plus to add device, it will be added within seconds.



3. Create routines to use the motion sensor of the Multi-Function Night Light to control other connected devices.



Pairing With Amazon Echo

Hub: Echo speakers with built-in Zigbee hub, Echo 4th Gen, Echo Plus 1st & 2nd Gen, Echo Show 10 2nd & 3rd Gen, Echo Studio
App: Amazon Alexa



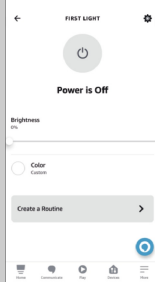
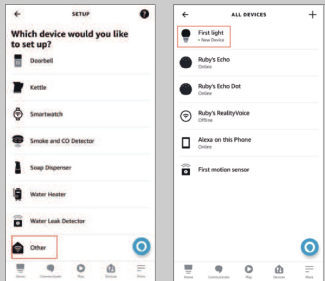
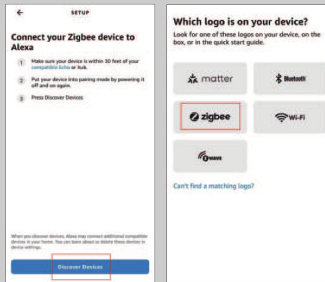
Pairing steps:

1. Tab "+" in the Alexa App, choose "Zigbee" and "others" to add device, the Multi-Function Night Light will be added as the "First Light".
2. You can create routines with the "First Light".

[Third Reality Multi-Function Night Light Quick Start Guide](#)

Quick start guide for the Third Reality Zigbee Multi-Function Night Light (3RSNL02043Z). This 3-in-1 device combines a motion sensor, illumination sensor, and RGB color night light, acting as a Zigbee repeater. Learn about setup, features, and pairing with smart home hubs like Amazon Echo, Hubitat, Home Assistant, and SmartThings.

lang:en score:21 filesize: 8.08 M page_count: 2 document date: 2023-07-24



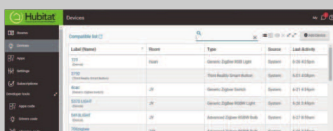
Pairing With Hubitat

Website: <http://find.hubitat.com/>



Pairing steps:

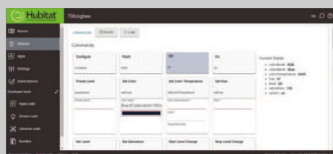
1. Tab "Add Device" in Hubitat Devices page.



2. Choose "Zigbee", then "Start Zigbee Pairing".

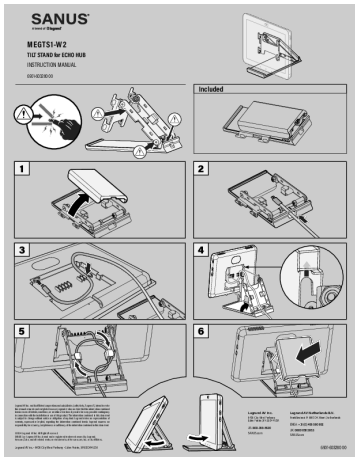
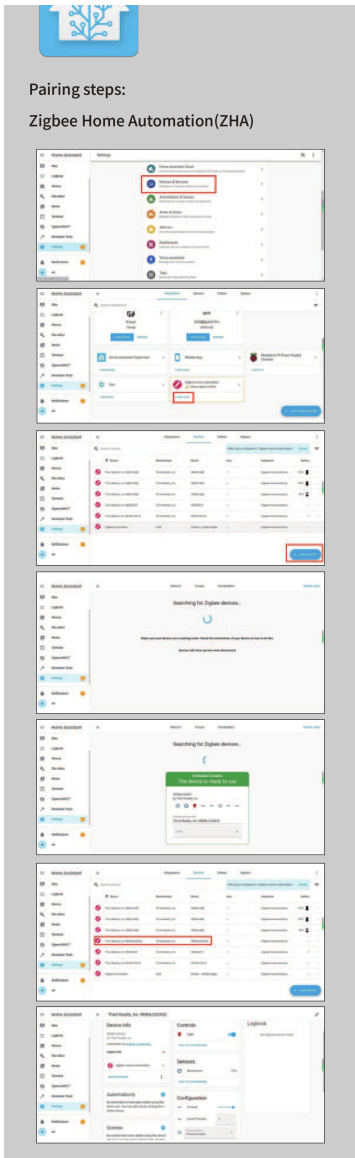


3. Type in a device and room name and click "Next" to complete pairing.



Pairing With Home Assistant





[\[pdf\]](#) User Manual Warranty

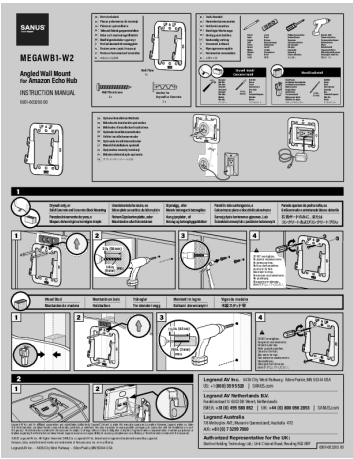
Installation Manual 1059 KBMEGTS1 in by Sanus Johnston RI Made for Amazon Tilt Stand Echo

Hubfrmcgfrwmyrimages webfronts cache frmcgfrwmyr |||

MEGTS1-W2 TILT STAND for **ECHO HUB** INSTRUCTION MANUAL 6901-603280 00

1 3 5 Legrand AV Inc. and its ailiated corporations and subsidiaries collectively, Legrand , intend to make this manual accurate and complete. However, Legrand makes no claim that the information contained herein covers all deta...

lang:en score:21 filesize: 1 M page_count: 1 document date: 2018-10-31



[pdf] User Manual

Installation Manual 3037 KBMEGAWB1 in by Sanus Hot Springs AR Made for Amazon Mount Echo Hubfrtqbogfjkqimages webfronts cache frtqbogfjkq |||

MEGAWB1-W2 Angled Wall Mount For Amazon **Echo Hub** INSTRUCTION MANUAL 6901-603265 00 EN Parts Included ES Piezas y elementos de montaje FR Pices et quincaillerie DE Teile und Befestigungsmaterialien SV Delar och monteringsstillbehör NO Medfølgende deler og utstyr IT Parti ed elementi di montaggio in PL ... lang:it **score:21** filesize: 2.88 M page_count: 1 document date: 2018-10-31



Guide d'installation et d'utilisation du module interrupteur connecté Corston

Découvrez comment installer et utiliser le module interrupteur connecté Corston pour une maison intelligente. Ce guide couvre les fonctionnalités, la compatibilité avec les hubs et les étapes de configuration.

lang:fr **score:20** filesize: 98.81 K page_count: 5 document date: 2025-04-14



[pdf] Guide

ELKO One Matter Thermostat 16 A Device User Guide Schneider Electric thermostat filetype after 2024 06 13 Google Search productinfo schneider electric elko matter a device user guide dd00686115 English ved 2ahUKEwj128q91eeGAxVXMVcFHbC6BHEQr4kDegQIQhAA usg AOvVaw3W2qq2odQgo bIDUNydw3 |||

ELKO One Matter Thermostat 16 A Device User Guide Information about features and functionality of t ... K 2nd gen Apple TV 4K 3rd gen, 128 GB HomePod 2nd gen HomePod mini Alexa Echo 4th gen **Echo Hub** Echo Plus 2nd gen Echo Show 8 3rd gen Echo Show 10 3rd gen Echo Studio Google Ho...

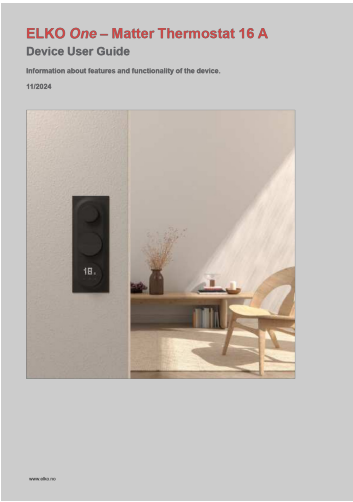
lang:en **score:19** filesize: 4.41 M page_count: 46 document date: 2024-06-14



[pdf] Frequently Asked Questions Troubleshooting Guide Guide

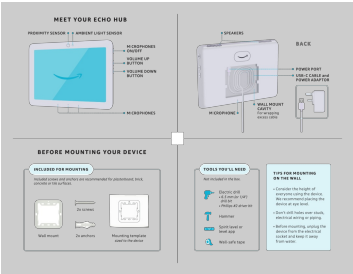
THIRDREALITY Zigbee Vibration Sensor 3 Pack with 110dB Alarm Hub Required Adjustable Sensitivity Work SmartThings Home Assistant via ZHA Z2M and Echo Devices Built in hub 3RVS01031Z Troubleshooting Guide Third Reality Inc B0DL9Z9TR7 B0C9DP249C B0DG4KD97V 61sBEISCXCL m media amazon images I |||

Vibration sensor FAQ 1 How to turn off the siren of the vibration sensor Please open the battery cover, and turn on/off the siren switch. 2 How to set the sensitivity of the vibration sensor Please open the battery cover, and set the sensitivity with the sensitivity switch. 3 How to factory reset ... lang:en score:17 filesize: 106.53 K page_count: 1 document date: 2024-06-06



ELKO One – Matter Thermostat 16 A: User Guide for Smart Heating Control

Comprehensive user guide for the ELKO One Matter Thermostat 16 A, detailing features, installation, setup, user settings, and troubleshooting for smart home heating systems. lang:en score:17 filesize: 4.34 M page_count: 50 document date: 2024-12-04



Echo Hub Quick Start Guide: Setup and Mounting Instructions

Learn how to set up and mount your Amazon Echo Hub with this comprehensive quick start guide. Includes step-by-step instructions for wall mounting, connecting power, and initial setup with Alexa. lang:en score:17 filesize: 2.53 M page_count: 3 document date: 2023-07-14



[pdf] Guide

Lorenzo Gambetti App IP EVO e guida di sistema FARFISA Usare i pulsanti 2 3 per inserire la password Sistema quindi il pulsante 4 ripristino del prodotto alla configurazione iniziale questa IPEVO guide ITA farfisa images documentazione aggiuntiva ||| App IP EVO e guida di sistema INDICE 1. Caratteristiche generali di IP EVO zione Apri con l app Alexa e/o Apri lo sblocco nella sezione Apri tramite comando vocale e con **Echo Hub** . Attivando questa seconda opzione verr chiesto di configurare un codice di sblocco numeric... lang:it score:16 filesize: 5.41 M page_count: 43 document date: 2025-01-13



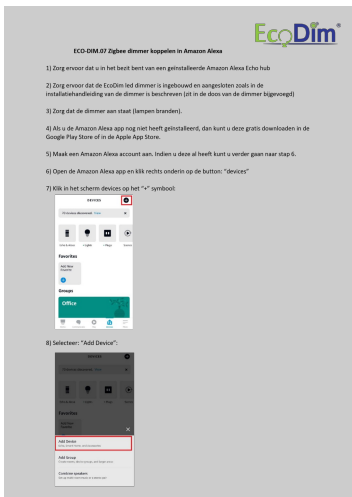
[\[pdf\]](#) Accessories

Echo Hub anonymous See fact sheet m media amazon images G 01 kindle journeys sustainabilityfs ||| Product Sustainability Fact Sheet Smart Home Control Panel 1st Gen 2023 release Updated September 2023 - for US only Figures apply to Smart Home Control Panel 1st Gen only, not including bundle accessories Designed for Sustainability We re working to make Amazon devices more sustainable--from how ... lang:en score:15 filesize: 4.42 M page_count: 9 document date: 2023-09-28



[\[pdf\]](#) Accessories

Echo Hub anonymous Product Sustainability Fact Sheet devices fact sheet echo hub sustainability aboutamazon ||| Product Sustainability Fact Sheet Smart Home Control Panel 1st Gen 2023 release Updated September 2023 - for US only Figures apply to Smart Home Control Panel 1st Gen only, not including bundle accessories Designed for Sustainability We re working to make Amazon devices more sustainable--from how ... lang:en score:14 filesize: 4.42 M page_count: 9 document date: 2023-09-19



[\[pdf\]](#)

De Ledleverancier Handleiding ECO DIM 07 Zigbee dimmer koppelen met Amazon Alexa ecobright be amfile file 82 ||| ECO-DIM.07 Zigbee dimmer koppelen in Amazon Alexa 1 Zorg ervoor dat u in het bezit bent van een genstalleerde Amazon Alexa Echo hub 2 Zorg ervoor dat de EcoDim led dimmer is ingebouwd en aangesloten zoals in de installatiehandleiding van de dimmer is beschreven zit in de doos van de dimmer bijgev... lang:nl score:14 filesize: 591.92 K page_count: 3 document date: 2022-03-30



[pdf]

AIG JAPAN TsCs EchoAmazon Legal 20230821 m media amazon images G 09 kindle dp 2023

AUCC 3958575 |||

Amazon <http://www.amazon.co.jp> amazon.co.jp Amazon 2012 10 24 amazon.co.jp

Amazon 30 ... Input, Echo Link, Echo Link Amp, Echo Dot with clock, Echo Flex, Echo

Studio, Echo Auto, Echo Pop, **Echo Hub** amazon.co.jp Amazon 61 TEL0120-899-090

24 Amazon, Echo Amazon.com, Inc...

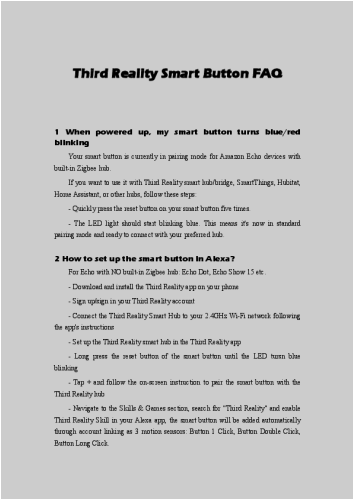
lang:i-klngon **score:13** filesize: 244.47 K page_count: 2 document date: 2023-05-29



[PROLICHT Matter User Guide: Smart Home Integration](#)

A comprehensive user guide for integrating PROLICHT smart lighting products with the Matter smart home standard across various platforms including Apple Home, Google Home, Amazon Alexa, Samsung SmartThings, and Home Assistant.

lang:en **score:13** filesize: 1.79 M page_count: 23 document date: 2024-03-27



[pdf]

Installation Guide Instructions Frequently Asked Questions

Administrator Third Reality Smart Button FAQ Place the smart button next to hub bridge speaker during pairing or software OTA update within 12 meters from Zigbee 619nBOyYbsL ref dp product quick view m media amazon images I |||

Third Reality Smart Button FAQ 1 When powered up, my smart button turns blue/red blinking Your smart ... he 4th Gen Echo, Echo Plus, Echo Studio, 3rd Gen Echo Show 8, and the 2nd and 3rd gen Echo Show 10, **Echo Hub** etc. While Alexa doesn t directly support smart buttons, you can still set it up as a conta...

lang:en **score:11** filesize: 70.04 K page_count: 3 document date: 2024-06-26

TABLETTITELINEET
smart:things



[pdf]

smart things tuoteluettelo 2025 DAGoDkfjsP0 BACHOQXQ3X8 0 Jarkko Kankaanpää sXX 28 L250

7915206 katalogi finnsat fi files docs |||

TABLETTITELINEET TUOTELUETTELO 2025 sDock Fix iPad s09 sDock Fix mini iPad mini 5 2019 iPad min ... msung Tab A/S Ei ole yhteensopiva Samsung 2020 Tab A7 SMT500 -mallien kanssa s28-AEH C sPoE Amazon **Echo Hub** C Sovitin Power Data PoE:n kautta USB-C-kaapelilla 40 cm Amazon **Echo Hub** s26 C sCharge PoE... lang:tl score:11 filesize: 5.7 M page_count: 10 document date: 2025-05-21

TABLETTITELINEET
smart:things



[pdf]

smart things tuoteluettelo 2025 DAGoDkfjsP0 BACHOQXQ3X8 Jarkko Kankaanpää sXX 28 L250

7915206 katalogifinnsat fi files docs katalogi |||

TABLETTITELINEET TUOTELUETTELO 2025 sDock Fix iPad s09 sDock Fix mini iPad mini 5 2019 iPad min ... msung Tab A/S Ei ole yhteensopiva Samsung 2020 Tab A7 SMT500 -mallien kanssa s28-AEH C sPoE Amazon **Echo Hub** C Sovitin Power Data PoE:n kautta USB-C-kaapelilla 40 cm Amazon **Echo Hub** s26 C sCharge PoE... lang:tl score:11 filesize: 5.7 M page_count: 10 document date: 2025-05-21

Lockin Veno FAQ & Troubleshoot

Q: How to contact Lockin for customer service?

A: For any assistance, please contact our customer service team at support@lockin.com

Q: What is Lockin's privacy policy like?

A: The data collected from your fingerprint, submitted to Lockin Veno, is stored locally on the lock and is not uploaded. Lockin Veno needs to be operated through the Lockin Smart App because it needs to remote control the lock, which will use the cloud service deployed on Amazon AWS. For remote control, we will use your information. Payment of AWS will only be stored on the device, not on AWS. Lockin Smart App does not collect personal information from users. Lockin strictly complies with privacy regulations.

Q: How does Lockin's Venkey™ palm vein recognition work?

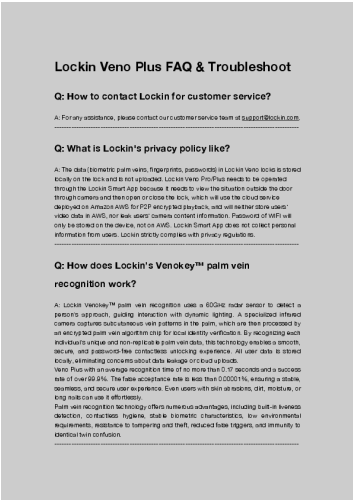
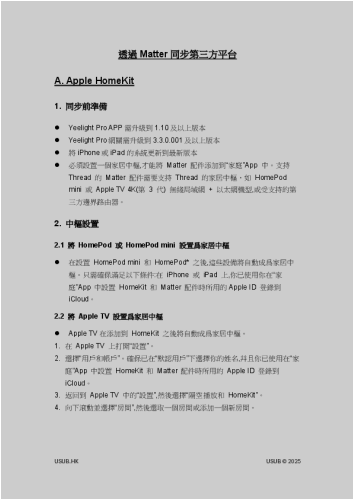
A: Lockin Venkey™ palm vein recognition uses a 600nm near-infrared light to detect a person's approach, guiding interaction with dynamic lighting. A specialized infrared camera captures subcutaneous vein patterns in the palm, which are then processed by an encrypted palm vein algorithm for secure identity verification. By recognizing each individual's unique and non-replicable palm vein data, this technology enables a smooth, secure, and painless face-to-face unlocking experience. All user data is stored locally, eliminating concerns about data leakage or cloud storage.

Veno with an average recognition time of no more than 0.17 seconds and a success rate of over 99.9%. The false acceptance rate is less than 0.0001%, ensuring a stable, accurate, and secure user experience. Even users with skin conditions, dirt, moisture, or long nails can use it effortlessly. Palm vein recognition technology offers numerous advantages, including built-in biometric detection, collection, storage, and transmission characteristics, low environmental requirements, resistance to tampering and theft, reduced false triggers, and immunity to external beam confusion.

[Lockin Veno FAQ & Troubleshooting Guide](#)

Comprehensive Frequently Asked Questions and troubleshooting solutions for the Lockin Veno smart lock, covering installation, features, connectivity, and maintenance.

lang:en score:10 filesize: 386.5 K page_count: 24 document date: 2025-08-22



[pdf] User Manual Guide
Markus Kirchmair USERGUIDE matterguide de v1 2 prolicht at media jyxjqrxo |||
USERGUIDE Inhaltsverzeichnis 1. Deckblatt 2. Inhaltsverzeichnis 3. Was ist Matter 4.
Voraussetzu ... Alexa Um mit dem Kommissionieren Ihrer Matter-Leuchte zu
beginnen, mssen Sie als erstes Ihr Amazon **Echo Hub** konfigurieren, und in Ihre
Home-App einbinden. Nach dem Sie Ihr Hub in der App eingebunden ...
lang:de score:10 filesize: 1.85 M page_count: 23 document date: 2024-03-27

[Yeelight Pro Matter Integration Guide: Connecting to Apple HomeKit, Alexa, Google Home & SmartThings](#)

Comprehensive guide to integrating Yeelight Pro devices with smart home platforms like Apple HomeKit, Amazon Alexa, Google Home, and SmartThings using Matter. Learn setup steps, supported devices, and pairing procedures.
lang:nl score:10 filesize: 648.3 K page_count: 7 document date: 2024-12-30

[Lockin Venio Plus FAQ & Troubleshooting Guide](#)
Comprehensive Frequently Asked Questions and troubleshooting guide for the Lockin Venio Plus smart lock, covering installation, connectivity, smart home integration, security features, and battery management.
lang:en score:10 filesize: 396.97 K page_count: 25 document date: 2025-08-20

Lockin Veno Pro FAQ & Troubleshoot

Q: How to contact Lockin for customer service?

A: For any assistance, please contact our customer service team at support@lockin.com.

Q: What is Lockin's privacy policy like?

A: The data collected from users' fingerprints, submitted to Lockin Veno Pro, is stored locally on the lock and is not uploaded. Lockin Veno Pro needs to be connected through the Lockin Smart App because it needs to view the situation outside the door through Camera and the cloud service on the lock, which will use the cloud service deployed on Amazon AWS for P2P encrypted playback, and will neither store users' video data in AWS, nor use users' contact information. Passwords of AWS will only be stored on the device, not on AWS. Lockin Smart App does not collect personal information from users. Lockin strictly complies with privacy regulations.

Q: Where does the inspiration for the Lockin Veno Pro come from?

A: We realized traditional door locks have so many problems—they're not always safe, they're not very elegant, and the control experience can be frustrating. Think about it: finger-put sensors fail all the time, door cameras miss important events, and dealing with battery life is a hassle. So we asked ourselves, what if we could make a smart lock that truly solved these issues? That's where the Lockin Veno Pro comes in. With biometric™ palm vein recognition, you get touch-free unlocking—it's safer and cleaner. The 180° ultra-wide 2K i4K LockinCam gives you a full view outside your door. And with AI-powered detection and solar-powered battery life, the lock works all day without interruptions. At Lockin, every feature we create is designed to solve real problems and give you a smart home experience that's both secure and stylish.

[Lockin Veno Pro FAQ & Troubleshooting Guide](#)

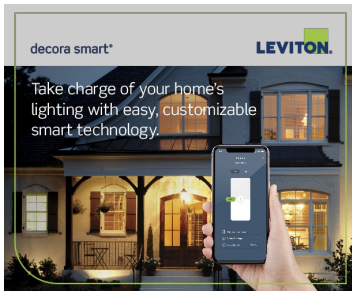
Comprehensive guide to Lockin Veno Pro smart lock features, installation, connectivity, security, and troubleshooting. Learn about palm vein recognition, smart home integration, and more.

lang:en score:10 filesize: 399.31 K page_count: 26 document date: 2025-08-20

[\[pdf\] Borchure](#)

Take charge of your home's lighting with easy customizable smart technology Leviton Decora Smart Brochure IMARK Group has robust solutions using industry leading Wi-Fi® DG15S Dimmer DZ6HD Switch DZ15S 4 Speed Fan Controller inside imarkgroup UPLOADED FILE IMARKNowDigitalImpact 104 Take charge of your home's lighting with easy, customizable smart technology. Enhancing your home with smart lighting control is easy. Add the safety and convenience of automated lighting to your home with the Leviton Decora Smart family of products, so you can take control of your lighting while ...

lang:en score:10 filesize: 10.64 M page_count: 16 document date: 2021-09-01

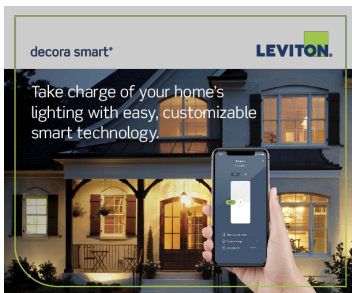


[\[pdf\] Borchure](#)

SA-11036B-8 5x7_DS_BrochureF_JPs leviton en docs

Take charge of your home's lighting with easy, customizable smart technology. Enhancing your home with smart lighting control is easy. Add the safety and convenience of automated lighting to your home with the Leviton Decora Smart family of products, so you can take control of your lighting while ...

lang:en score:10 filesize: 1.09 M page_count: 16 document date: 2021-09-01

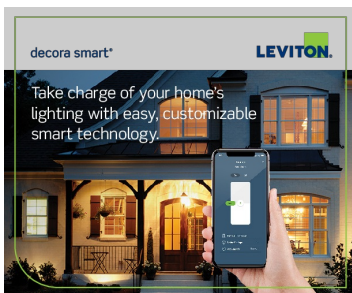


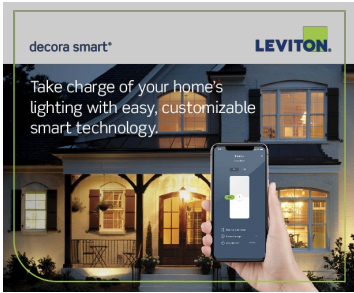
[\[pdf\] Specifications Borchure](#)

Leviton Decora Smart Index of @site electricsuppliesonline ssl specsheets Brochure p11 secure hostingprod |||

Take charge of your home's lighting with easy, customizable smart technology. Enhancing your home with smart lighting control is easy. Add the safety and convenience of automated lighting to your home with the Leviton Decora Smart family of products, so you can take control of your lighting while ...

lang:en score:10 filesize: 6.18 M page_count: 16 document date: 2021-04-26





[pdf] Borchure

Manufacturer BrochureLeviton DS4KT 1PB Decora Smart 4 Button Color Change

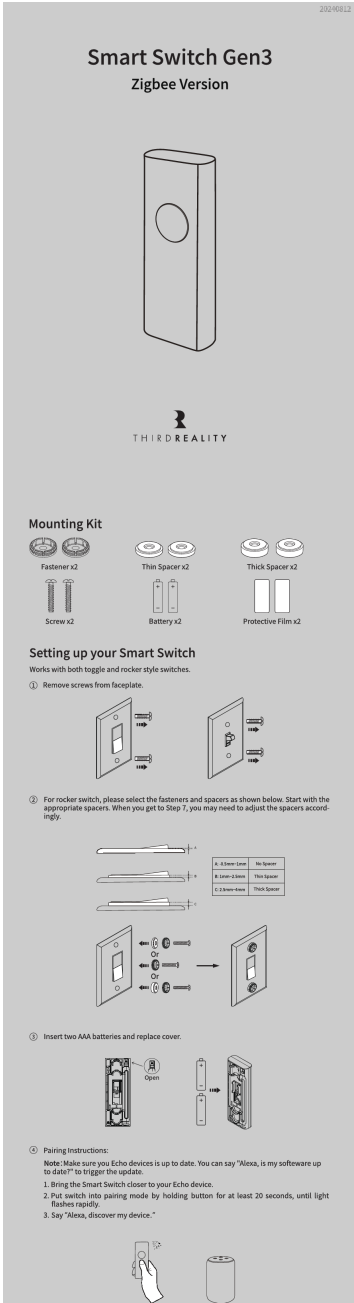
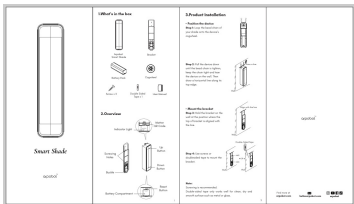
Brownc0172d89adc12752474c25abb76367a6836dbfa7cdn adiglobaldistribution us pim Original 10226
c0172d89adc12752474c25abb76367a6836dbfa7 |||

Take charge of your home s lighting with easy, customizable smart technology.
Enhancing your home with smart lighting control is easy. Add the safety and
convenience of automated lighting to your home with the Leviton Decora Smart family
of products, so you can take control of your lighting while ...
lang:en score:10 filesize: 1.09 M page_count: 16 document date: 2021-09-01

[pdf] User Manual Installation Guide

0413 Smart Shade 19 giu 2024 — Do not use the device for shades that exceed its maximum load
capacity of 5kg • Children shall play with appliance Cleaning and user maintenance
gWz7YsZn4oOcJ0A0kIn57Q3npQ framerusercontent assets |||

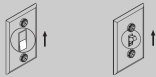
Smart Shade TM arpobot 1.What s in the box 3.Product Installation Position the
device Step 1: Loo ... Mini Apple TV 4K 2nd Gen Google Nest WiFi Google Nest
Hub/Hub Max Amazon Echo 4th Gen Amazon **Echo Hub**/Show Amazon Eero 6
router Samsung SmartThings Hub V3 2. A smartphone or tablet is requir...
lang:en score:10 filesize: 1.03 M page_count: 2 document date: 2024-04-15



- ⑥ Make sure Smart Switch actuator is in the up position as shown by pressing the button.



- ⑦ Turn your rocker or toggle switch to ON position, as shown.



- ⑧ Place Smart Switch over existing switch. Test the switch by pressing the button to turn on and off. Adjust the spacers to ensure proper engagement between the Smart Switch and wall switch.



Optional - For rocker switch, place protective film over paddle, as shown.



Using your Smart Switch

1. Follow instructions in the Amazon Alexa App to set up your Amazon Echo.
2. For optimal performance, switch should be no more than 100 feet from Echo device.
3. To control device using voice commands, say "Alexa, turn on/off First Switch".

LED Status

Pairing - LED fast blinking (two blinks every second)

Reconnect - LED slow blinking (Blink once every three seconds)

Low Battery - LED double blinking (two short blinks every two seconds)

Pairing with Third Reality

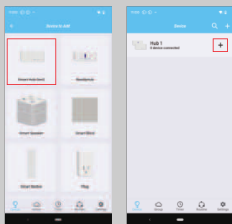
App: Third Reality App

Hub: Third Reality Smart Hub/Smart Hub Gen2 Plus



Pairing steps:

- 1) Register and sign in your THIRDOREALITY account, and add the THIRDOREALITY hub.
- 2) Long press the button of the switch for 30 seconds until the LED turns fast blinking, make sure it is in pairing mode.
- 3) Tab "+" in the right of Smart Hub to add device.
- 4) Create routines to control other connected devices.



Pairing with Amazon Echo

Hub: Echo speakers with built-in Zigbee hub, Echo 4th Gen, Echo Plus 1st & 2nd Gen, Echo Studio

App: Amazon Alexa



Pairing steps:

- 1) Ask Alexa to check for updates before pairing.
- 2) Long press the button of the switch for 30 seconds until the LED turns fast blinking, make sure it is in pairing mode.
- 3) Tab "+" in the Alexa App, choose "Zigbee" and "others" to add device.
- 4) You can create routines with the device.



Pairing with SmartThings

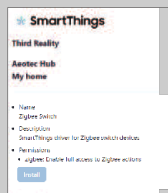
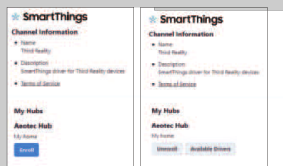
App: SmartThings App

Devices: SmartThings Hub 2nd Gen(2015) and 3rd Gen.(2018), Aeotec Smart Home Hub.

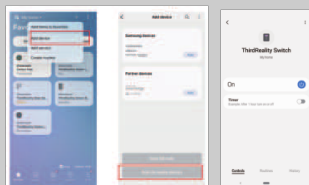


Pairing steps:

- 1) Check for updates to make sure the SmartThings Hub firmware is up to date before pairing.
- 2) Add SmartThings drivers for Smart Switch Gen3
 - Open this link in your PC browser. Log in your SmartThings Account.
<https://bestow-regional.api.smartthings.com/invite/adm/s06Xz9>
 - Click "Enroll" -- "Available Drivers" -- "Install" to install the Zigbee Contact driver.



- 3) Long press the button of the switch for 30 seconds until the LED turns fast blinking, make sure it is in pairing mode.
- 4) Open the SmartThings App, tap "+" on the upper right corner to "Add device" and then tap "Scan" to "Scan for nearby devices".
- 5) The device will be paired with the SmartThings hub in a few seconds.
- 6) Create routines to control connected devices.



Pairing with Hubitat

App: Third Reality App
Hub: Third Reality Smart Hub



Pairing steps:

- 1) Tap "Add Device" in Hubitat Devices page.
- 2) Long press the button of the switch for 30 seconds until the LED turns fast blinking, make sure it is in pairing mode.
- 4) Choose "Zigbee", then "Start Zigbee Pairing".
- 5) Create a device name and room name, click "Next" to complete pairing.



[pdf] User Manual Quick Start Guide

Smart Switch Gen3 QSG BLE 0414 3reality This device complies with part 15 of the FCC rules Operation is subject to following two conditions 1 this may not cause harmful interference and 2 must zigbee UM 20240812 2024 08 |||

20240812 Pairing with Third Reality App: Third Reality App Hub: Third Reality Smart Hub/Smart Hub Ge ... Smart Hub to add device. 4 Create routines to control other connected devices. Pairing with Amazon **Echo Hub**: Echo speakers with built-in Zigbee hub, Echo 4th Gen, Echo Plus 1st 2nd Gen, Echo Studio...

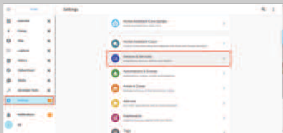
lang:en score:10 filesize: 7.5 M page_count: 1 document date: 2024-08-12

Pairing with Home Assistant ZHA



Pairing steps:

- 1) Long press the button of the switch for 30 seconds until the LED turns fast blinking, make sure it is in pairing mode.
- 2) Make sure Home Assistant Integrations Zigbee Home Automation Setup is ready, then go to "Configuration" page, click "Integration".
- 3) Click "Devices" on the Zigbee item, the click "Add Devices".
- 4) After the pairing is completed, it will show up in the page.
- 5) Back to "Devices" page, then you can find the device added.
- 6) Click to enter in the control interface to set the device.
- 7) Click "+" belongs to Automation and then you can add different actions.



Troubleshooting

1. Inverted On/Off status
To reverse On/Off direction of the switch, long press the Smart Switch button more than 10 seconds until blue LED is displayed solid then release.
2. Factory Reset
To factory reset the Smart Switch, press and hold the Smart Switch button more than 20 seconds until the blue LED flashed rapidly, indicating that the Smart Switch is in pairing mode now.
3. Adjusting/Adding Spacers
 - If the Smart Switch actuates but is not turning your wall switch on or off, the gap between Smart Switch and wall switch may be too wide. Try slightly tightening faceplate screws. You can also try using a different size spacer.
 - If Smart Switch fails to actuate or comes off the wall when actuating, the Switch may be too close to the wall. Try changing the size of your spacer.
4. Switch won't pair
 - Make sure your Echo speaker is compatible with Smart Switch. Compatible Echo speakers include Echo Plus Gen 1& Gen 2, Echo Gen 4, Echo Studio.
 - Make sure your Echo devices is up to date. You can say "Alexa, is my software up to date?" to trigger the update.
 - Reboot the Echo speaker by unplugging the power and plugging it back in, then try to pair the Smart Switch with it again.
 - Factory reset the Echo speaker (Press and hold the Action button for 25 seconds. The light ring will pulse orange, then turn off. Wait for the light ring to turn back on and turn blue. The light ring then turns orange again and the device enters the set up mode), then try to pair the Smart Switch with it again.
5. Smart Switch is not responding
 - Turn the Smart Switch on/off twice in the Alexa app to sync the switch.
 - If your switch is not responding, reboot your Echo speaker, factory reset the switch and pair the switch again.
 - If the switch is still not responding, try de-registering your Echo speaker using the Alexa app, set up the speaker again and pair the switch.
6. Moving Switches
If you want to change the Echo speaker that a switch is paired to, remove the switch using the Alexa app, wait 30 minutes for Alexa cloud to update and pair the switch to the new Echo speaker.

Scan this QR code to find more useful videos:



Limited Warranty

For limited warranty, please visit www.3reality.com/devicesupport

For customer support, please contact us at info@3reality.com or visit www.3reality.com

For help and troubleshooting related to Amazon Alexa, visit the Alexa app.

FCC Regulatory Conformance:

This device complies with part 15 of the FCC rules. Operation is subject to the following two conditions: (1) this device may not cause harmful interference, and (2) this device must accept any interference received, including interference that may cause undesired operation.

Changes or modifications not expressly approved by the party responsible for compliance could void the user's authority to operate the equipment.

NOTE: This equipment has been tested and found to comply with the limits for a Class B digital device, pursuant to part 15 of the FCC Rules. These limits are designed to provide reasonable protection against harmful interference in a residential installation. This equipment generates uses and can radiate radio frequency energy and, if not installed and used in accordance with the instructions, may cause harmful interference to radio communications. However, there is no guarantee that interference will not occur in a particular installation. If this equipment does cause harmful interference to radio or television reception, which can be determined by turning the equipment off and on, the user is encouraged to try to correct the interference by one or more of the following measures:

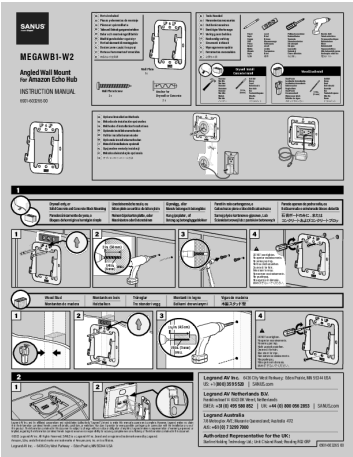
- Reorient or relocate the receiving antenna.
- Increase the separation between the equipment and receiver.
- Connect the equipment into an outlet on a circuit different from that to which the receiver is connected.
- Consult the dealer or an experienced radio/TV technician for help important announcement.

NOTE: The manufacturer is not responsible for any radio or TV interference caused by unauthorized modifications to this equipment. Such modifications could void the user's authority to operate the equipment.

RF Exposure

This equipment complies with FCC radiation exposure limits set forth for an uncontrolled environment.
This transmitter must not be co-located or operating in conjunction with any other antenna or transmitter.

This Guide is an independent publication of Third Reality, which is solely responsible for its content, and Amazon has not reviewed its claims for accuracy. Amazon, Alexa, Echo and all related logos are trademarks of Amazon.com, Inc. or its affiliates.



[\[pdf\]](#) User Manual

MEGAWB1 W2 IM 240322 sanus assets products megawb1 documents |||

MEGAWB1-W2 Angled Wall Mount For Amazon **Echo Hub** INSTRUCTION MANUAL
6901-603265 00 EN Parts Included ES Piezas y elementos de montaje FR Pices et quincaillerie DE Teile und Befestigungsmaterialien SV Delar och monteringsstillbehör NO Medflgende deler og utstyr IT Parti ed elementi di montaggio in PL ...
lang:it **score:9** filesize: 2.9 M page_count: 1 document date: 2024-03-22

Multi-Function Night Light

Quick Start Guide

Product Overview

Third Reality Zigbee Multi-Function Night Light - a compact and intelligent solution combines a motion sensor, a light sensor and color night light. With remote control via Zigbee commands, it offers versatile automation options for security, lighting, and ambiance. Experience convenience and innovation in one device.

Note: The level of illuminance value is defined with reference to the lux value, not exactly the same.

What's In The Box

Multi-Function Night Light × 1
Power Adapter × 1
Quick Start Guide × 1

Product Details

USB Interface

Color Night Light

Illumination Sensor

Set Pinhole

Motion Sensor

Power Adapter

Specification

Dimension	2.6 x 1.6 x 2.5 inches
-----------	------------------------

Color	White
Input	DC 5V 0.5A
Material	Plastic

LED Status Table

A: BOOTUP LED Status

LED	Color Scheme	Comments
First Blink	Green is Local Routine Enabled Red is Local Routine Disabled	Short press the pin hole will change the Local Routine Setup Status
Second Blink	Yellow is not paired Warm White is paired	Long press the pin hole will reset the pairing status
Status Check	Not Paired: On <=5s is illumination > min On >5s is illumination <=min	illumination > min means environment is light need to turn off automatically illumination <= min means environment is dark need to keep on and then
	Paired: check report Status (First paired - Default blue on and dim 2 times)	If paired then go to RUNTIME status

B: Connect/Disconnect LED Status

LED	Color Scheme	Comments
Two Times	If LED is ON, dim two times (previous color) is indicate from disconnect to connect If LED is OFF, No Indication	The device will automatically Try reconnect
Three Times	If LED is ON, dim three times (previous color) is indicate from connect to disconnect If LED is OFF, No Indication	Long time has not been reconnected Try restarting your device or Hub

Setup

1. Plug the night light into a power outlet using a USB-A power adaptor, it initially lights up green and turns yellow, indicating it is in pairing mode.
Note: It will exit pairing mode automatically if not successfully paired within 3 minutes, to put it into pairing mode again, press and hold the reset button through the pinhole for 5 seconds until it turns red, then release, the device will be reset and re-enter pairing mode.)
2. Install the Zigbee hub & app on your device and log in, make sure the firmwares are up to date, and follow the instructions to set up the device.
3. Once the pairing is successfully completed, the night light dims in blue twice then turns solid blue. You can change its brightness and color in the app.
4. The motion sensor, illumination sensor, and color light of the multi-function night light will report their status information as individual sub-devices, facilitating the configuration of various routines and home automation tasks. Once the pairing is successfully completed, the night light dims in blue twice then turn solid blue. You can change its brightness and color in the app. Depending on the hub being used this may vary, check "pairing with different hubs" in detailed instructions.

Local Routine

The product supports local routines where the light will turn on when both the illumination sensor and motion sensor meet the specified conditions (When the light is dim and detects human motion).

Short press the reset button through the pinhole to enable or disable the local routine function. Pressing the button once and seeing a green light indicates that the feature is currently enabled. Pressing the button again and seeing a red light indicates that the routine is disabled.

In both enabled and disabled states, motion sensor, illumination sensor, and color light will be reported synchronously.

Note that if you turn your Multi-Function Night Light on or off using your app or voice, Local Routine will be disabled for 12 hours.

Pairing with Different Hubs

Before pairing, use a pin to press into the pinhole and hold for 5 seconds until the LED turns red, then release to set the Multi-Function Night Light into pairing mode; Make sure the your hub's firmware and phone apps are up to date.

Pairing with Third Reality

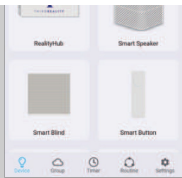
Hub: Third Reality Hub Gen2 Plus
App: Third Reality



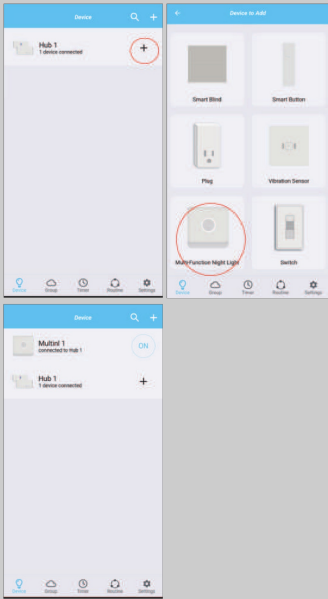
Pairing steps:

1. Tab "+" in Third Reality App, follow the on-screen instructions to add Smart Hub Gen2 Plus.

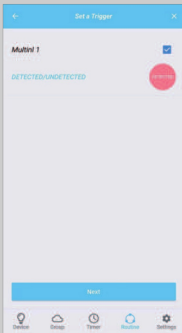




2. Tab "+" in the right of Smart Hub Gen2 Plus to add device, it will be added within seconds.



3. Create routines to use the motion sensor of the Multi-Function Night Light to control other connected devices.



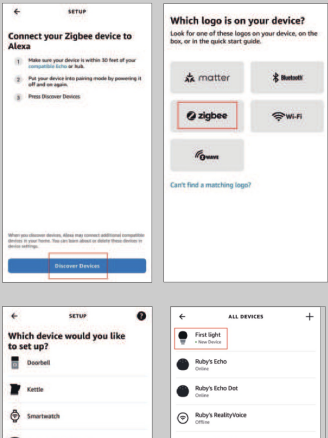
Pairing With Amazon Echo

Hub: Echo speakers with built-in Zigbee hub, Echo 4th Gen, Echo Plus 1st & 2nd Gen, Echo Studio
App: Amazon Alexa



Pairing steps:

1. Tab "+" in the Alexa App, choose "Zigbee" and "others" to add device, the Multi-Function Night Light will be added as the "First Light".
2. You can create routines with the "First Light".

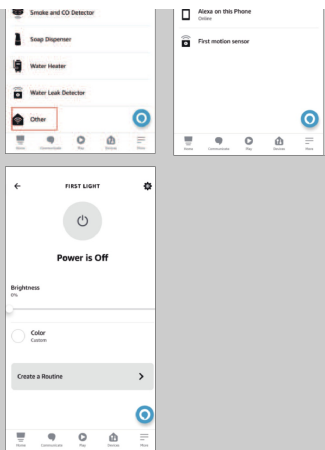


[pdf] Quick Start Guide Specifications Guide

Multi Function Night Light 3reality Product Overview Third Reality Zigbee a compact and intel ligent solution combines motion sensor light color night With remote control via commands it offers versa tile automation options for security lighting ambiance Experi ence convenience innovation in one device 2024 03 |||

Multi-Function Night Light Quick Start Guide Product Overview Third Reality Zigbee Multi-Function N ... on sensor of the Multi-Function Night Light to control other connected devices. Pairing With Amazon **Echo Hub**: Echo speakers with built-in Zigbee hub, Echo 4th Gen, Echo Plus 1st 2nd Gen, Echo Studio...

lang:en score:9 filesize: 8.24 M page_count: 2 document date: 2024-02-28



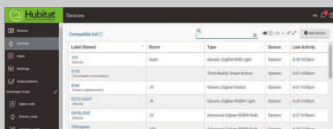
Pairing With Hubitat

Website: <http://find.hubitat.com/>



Pairing steps:

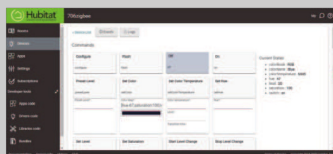
1. Tab "Add Device" in Hubitat Devices page.



2. Choose "Zigbee", then "Start Zigbee Pairing".



3. Type in a device and room name and click "Next" to complete pairing.

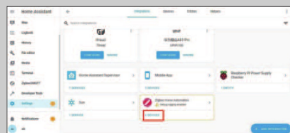
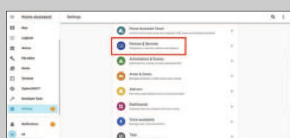


Pairing With Home Assistant



Pairing steps:

Zigbee Home Automation(ZHA)

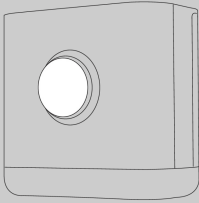




20240503.02

Multi-Function Night Light

User Manual



THIRDREALITY

Product Overview


Third Reality Zigbee Multi-Function Night Light - a compact and intelligent solution combines a motion sensor, a light sensor and color night light. With remote control via Zigbee commands, it offers versatile automation options for security, lighting, and ambiance. Experience convenience and innovation in one device.

Note: The level of illuminance value is defined with reference to the lux value, not exactly the same.

What's In The Box


Multi-Function Night Light × 1
Power Adapter × 1
Quick Start Guide × 1

Product Details




USB Interface

Color Night Light




Illumination Sensor



Set Pinhole

Motion Sensor



Power Adapter

Specification

Dimension	2.6 x 1.6 x 2.5 inches
Color	White
Input	DC 5V 0.5A
Material	Plastic

LED Status Table

A: BOOTUP LED Status

LED	Color Scheme	Comments
First Blink	Green is Local Routine Enabled Red is Local Routine Disabled	Short press the pin hole will change the Local Routine Setup Status
Second Blink	Yellow is not paired Warm White is paired	Long press the pin hole will reset the pairing status
Status Check	Not Paired: On <=5s is illumination > min On >5s is illumination <=min	illumination > min means environment is light need to turn off automatically illumination <= min means environment is dark need to keep on and then
	Paired: check report Status (First paired - Default blue on and dim 2 times)	If paired then go to RUNTIME status

B: Connect/Disconnect LED Status

LED	Color Scheme	Comments
Two Times	If LED is ON, dim two times (previous color) is indicate from disconnect to connect If LED is Off, No Indication	The device will automatically Try reconnect
Three Times	If LED is ON, dim three times (previous color) is indicate from connect to disconnect If LED is Off, No Indication	Long time has not been reconnected Try restarting your device or Hub

Setup

- Plug the night light into a power outlet using a USB-A power adaptor, it initially lights up green and turns yellow, indicating it is in pairing mode.
Note: It will exit pairing mode automatically if not successfully paired within 3 minutes, to put it into pairing mode again, press and hold the reset button through the pinhole for 5 seconds until it turns red, then release, the device will be reset and re-enter pairing mode.)
- Install the Zigbee hub & app on your device and log in, make sure the firmwares are up to date, and follow the instructions to set up the device.
- Once the pairing is successfully completed, the night light dims in blue twice then turns solid blue. You can change its brightness and color in the app.
- The motion sensor, illumination sensor, and color light of the multi-function night light will report their status information as individual sub-devices, facilitating the configuration of various routines and home automation tasks. Once the pairing is successfully completed, the night light dims in blue twice then turn solid blue. You can change its brightness and color in the app. Depending on the hub being used this may vary, check "pairing with different hubs" in detailed instructions.

Local Routine

The product supports local routines where the light will turn on when both the illumination sensor and motion sensor meet the specified conditions (When the light is dim and detects human motion) .

Short press the reset button through the pinhole to enable or disable the local routine function. Pressing the button once and seeing a green light indicates that the feature is currently enabled. Pressing the button again and seeing a red light indicates that the routine is disabled.

In both enabled and disabled states, motion sensor, illumination sensor, and color light will be reported synchronously.

Note that if you turn your Multi-Function Night Light on or off using your app or voice, Local Routine will be disabled for 12 hours.

Pairing with Different Hubs

Before pairing, use a pin to press into the pinhole and hold for 5 seconds until the LED turns red, then release to set the Multi-Function Night Light into pairing mode; Make sure the your hub's firmware and phone apps are up to date.

Pairing with Third Reality

Hub: Third Reality Hub Gen2 Plus

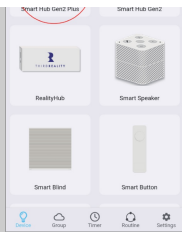
App: Third Reality



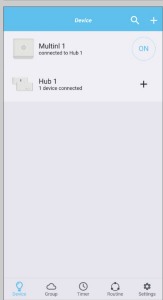
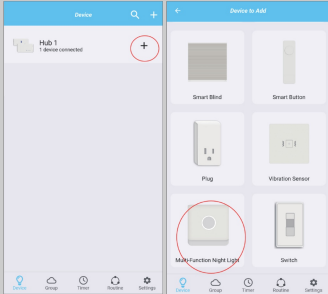
Pairing steps:

- Tab "+" in Third Reality App, follow the on-screen instructions to add Smart Hub Gen2 Plus.

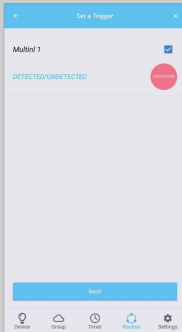




2. Tab "+" in the right of Smart Hub Gen2 Plus to add device, it will be added within seconds.



3. Create routines to use the motion sensor of the Multi-Function Night Light to control other connected devices.



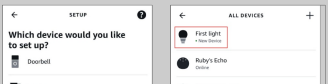
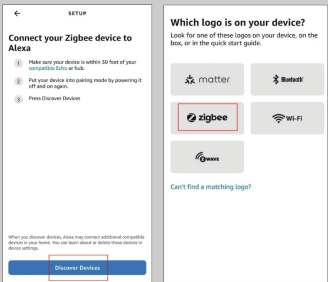
Pairing With Amazon Echo

Hub: Echo speakers with built-in Zigbee hub, Echo 4th Gen, Echo Plus 1st & 2nd Gen, Echo Studio
App: Amazon Alexa



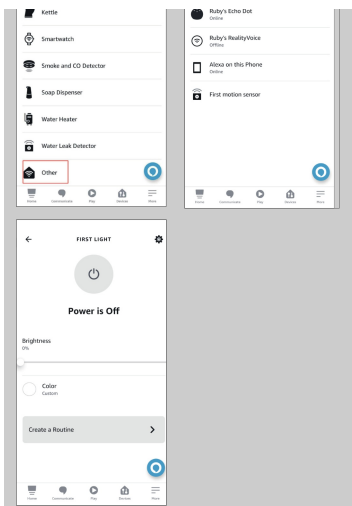
Pairing steps:

1. Tab "+" in the Alexa App, choose "Zigbee" and "others" to add device, the Multi-Function Night Light will be added as the "First Light".
2. You can create routines with the "First Light".



[pdf] User Manual Quick Start Guide Specifications Guide

Multi Function Night Light ThirdReality Create routines to use the motion sensor of control other connected devices 3 Pairing steps LED First Blink Second UM 20240920 82 srsltid AfmBOor89cp17eTU1rAduDqwQ05GcloEzrjOsPII2sfDkhrP0cVfV9on 3reality 2024 09 ||| 20240920.82 Multi-Function Night Light User Manual Product Overview Third Reality Zigbee Multi-Func ... on sensor of the Multi-Function Night Light to control other connected devices. Pairing With Amazon **Echo Hub**: Echo speakers with built-in Zigbee hub, Echo 4th Gen, Echo Plus 1st 2nd Gen, Echo Studio... lang:en score:9 filesize: 8.2 M page_count: 2 document date: 2024-09-20



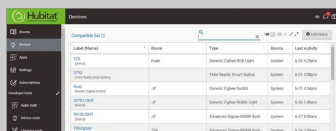
Pairing With Hubitat

Website: <http://find.hubitat.com/>

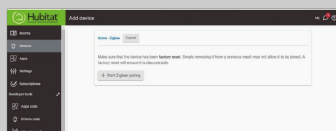


Pairing steps:

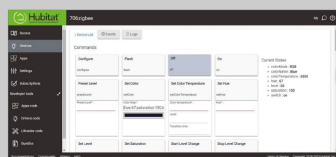
1. Tab "Add Device" in Hubitat Devices page.



2. Choose "Zigbee", then "Start Zigbee Pairing".



3. Type in a device and room name and click "Next" to complete pairing.

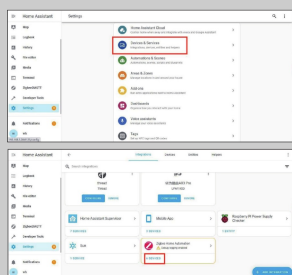


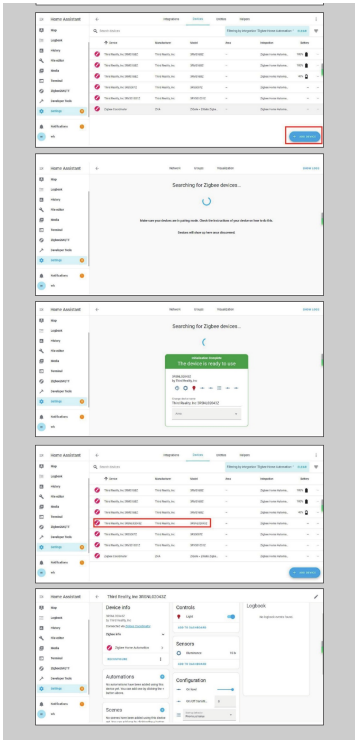
Pairing With Home Assistant



Pairing steps:

Zigbee Home Automation(ZHA)





Smart Home
Decora Smart® with Wi-Fi

Decora Smart® with Wi-Fi Single Pole, 3-Way/Multi-Location - Neutral Wire Required

Description	Rating	Color	Cat. No.
Decora Smart® Single Pole, 3-Way/Multi-Location - Neutral Wire Required	15A	White	D23LP-15
Decora Smart® Single Pole, 3-Way/Multi-Location - Neutral Wire Required	15A	Black	D23LP-15

Decora Smart® with Wi-Fi No-Neutral Single Pole, 3-Way/Multi-Location

Description	Rating	Color	Cat. No.
Decora Smart® Single Pole, 3-Way/Multi-Location - No-Neutral Wire Required	15A	White	D23LP-15
Decora Smart® Single Pole, 3-Way/Multi-Location - No-Neutral Wire Required	15A	Black	D23LP-15

Component Devices for 3-Way or Multi-Location Applications

Description	Rating	Color	Cat. No.
Decora Smart® Single Pole, 3-Way/Multi-Location - Neutral Wire Required	15A	White	D23LP-15
Decora Smart® Single Pole, 3-Way/Multi-Location - Neutral Wire Required	15A	Black	D23LP-15
Decora Smart® Single Pole, 3-Way/Multi-Location - Neutral Wire Required	15A	White	D23LP-15
Decora Smart® Single Pole, 3-Way/Multi-Location - Neutral Wire Required	15A	Black	D23LP-15

Color Change Handicap for Decora Smart® with Wi-Fi

Description	Color	Cat. No.
Decora Smart® Single Pole, 3-Way/Multi-Location - Neutral Wire Required	White	D23LP-15
Decora Smart® Single Pole, 3-Way/Multi-Location - Neutral Wire Required	Black	D23LP-15
Decora Smart® Single Pole, 3-Way/Multi-Location - Neutral Wire Required	White	D23LP-15
Decora Smart® Single Pole, 3-Way/Multi-Location - Neutral Wire Required	Black	D23LP-15

Color Choices (Color Change Handicap for Decora Smart® with Wi-Fi)

Color	Cat. No.
White	D23LP-15
Black	D23LP-15
White	D23LP-15
Black	D23LP-15

Technical Support 1-800-824-3020

[pdf] Datasheet

Smart Home Gordon Electric Supply Mini Plug In Dimmer D23LP No load rating W DAWDC 1B Decora Smart® Wire 600 Watt Neutral 300W LED CFL 600W Inc Halogen 600VA MLV Leviton 18592 O6 O8

CAT assets gordonelectricsupply datasheets ts |||

O Smart Home Smart Home Decora Smart with Wi-Fi Continued from previous page
Decora Smart with Wi-Fi Decora Smart with Wi-Fi Single Pole, 3-Way/Multi-Location -
- Neutral Wire Required Description Scene Controller Switch 2nd Gen 4-Speed Fan
Controller 2nd Gen Rating 15A Gen Use 5A LED/CFL/EI...

lang:en score:9 filesize: 274.66 K page_count: 3 document date: 2024-07-29

Multi-Function Night Light

Quick Start Guide



THIRD REALITY

Product Overview

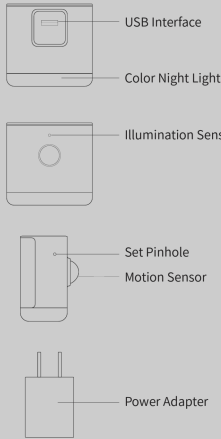
Third Reality ZigBee Multi-Function Night Light - a compact and intelligent solution combines a motion sensor, a light sensor and color night light. With remote control via ZigBee commands, it offers versatile automation options for security, lighting, and ambience. Experience convenience and innovation in one device.

Note: The level of illuminance value is defined with reference to the lux value, not exactly the same.

What's In The Box

- Multi-Function Night Light × 1
- Power Adapter × 1
- Quick Start Guide × 1

Product Details



Specification

Dimension	2.6 x 1.6 x 2.5 inches
Color	White
Input	DC 5V 0.5A
Material	Plastic

LED Status Table

A: BOOTUP LED Status

LED	Color Scheme	Comments
First Blink	Green is Local Routine Enabled Red is Local Routine Disabled	Short press the pin hole will change the Local Routine Setup Status
Second Blink	Yellow is not paired Warm White is paired	Long press the pin hole will reset the pairing status
Status Check	Not Paired: On <= 5s is illumination > min On > 5s is illumination <= min	illumination > min means environment is light need to turn off automatically illumination <= min means environment is dark need to keep on and then
	Paired: check report Status (First paired - Default blue on and dim 2 times)	If paired then go to RUNTIME status

B: Connect/Disconnect LED Status

LED	Color Scheme	Comments
Two Times	If LED is ON, dim two times (previous color) is indicate from disconnect to connect If LED is OFF, No Indication	The device will automatically Try reconnect
Three Times	If LED is ON, dim three times (previous color) is indicate from connect to disconnect If LED is OFF, No Indication	Long time has not been reconnected Try restarting your device or Hub

Setup

- Plug the night light into a power outlet using a USB-A power adaptor, it initially lights up green and turns yellow, indicating it is in pairing mode.
Note: It will exit pairing mode automatically if not successfully paired within 3 minutes, to put it into pairing mode again, press and hold the reset button through the pinhole for 5 seconds until it turns red, then release, the device will be reset and re-enter pairing mode.
- Install the Zigbee hub & app on your device and log in, make sure the firmwares are up to date, and follow the instructions to set up the device.
- Once the pairing is successfully completed, the night light dims in blue twice then turns solid blue. You can change its brightness and color in the app.
- The motion sensor, illumination sensor, and color light of the multi-function night light will report their status information as individual sub-devices, facilitating the configuration of various routines and home automation tasks. Once the pairing is successfully completed, the night light dims in blue twice then turn solid blue. You can change its brightness and color in the app. Depending on the hub being used this may vary, check "pairing with different hubs" in detailed instructions.

Local Routine

The product supports local routines where the light will turn on when both the illumination sensor and motion sensor meet the specified conditions (When the light is dim and detects human motion) .

Short press the reset button through the pinhole to enable or disable the local routine function. Pressing the button once and seeing a green light indicates that the feature is currently enabled. Pressing the button again and seeing a red light indicates that the routine is disabled.

In both enabled and disabled states, motion sensor, illumination sensor, and color light will be reported synchronously.

Note that if you turn your Multi-Function Night Light on or off using your app or voice, Local Routine will be disabled for 12 hours.

[pdf] Quick Start Guide Installation Guide Instructions Specifications Guide

Multi Function Night Light Note that if you turn your on or off using app voice Local Routine will be disabled for 12 hours Before pairing use a pin 3reality 2024 03 srsltid

AfmBOoqJ6GWM0Snn1YMOMMcUBh62u4pnhkJ4gfGOdqke4IzyaJGHlkpj Plug the night light into power outlet USB A Once is suc cessfully completed dims in blue twice then

AfmBOoozfml8oaktOHI9VUZHo1TypNRyMY h2p73h6rx9JUCiGa8mlqX Create routines to motion sensor of control other connected devices 3 Pairing steps LED First Blink Second AfmBOory3pd5j LwAe0L1O SYyUm3o3cUUCOrfmWaVKZSppBaYbUd jq It exit mode automatically not successfully paired within minutes put it again press and hold reset button AfmBOorKoEjOg54Ft5lx EWKepljTds

89XQYnZEHBZDqbMwS avooW7 Status Table BOOTUP B Connect Disconnect Product Overview × 1

Power Adapter Quick Start Guide AfmBOopKFWNtXwsgTAr9sKC7trYuL

oEDyHAzWlt9q5K5b7Hup9pDSfl Third Reality Zigbee compact intel ligent solution combines color

AfmBOorbmQpVLo6cTh4iNyEhpJhvvNNfw9EwN2V6i4Re4Iqzk47ros97v add Smart Hub Gen2

Pairing with Different Hubs

Before pairing, use a pin to press into the pinhole and hold for 5 seconds until the LED turns red, then release to set the Multi-Function Night Light into pairing mode; Make sure the your hub's firmware and phone apps are up to date.

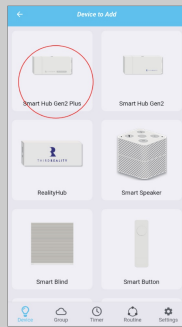
Pairing with Third Reality

Hub: Third Reality Hub Gen2 Plus
App: Third Reality

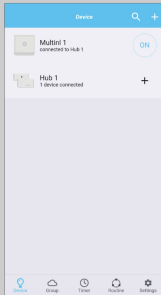
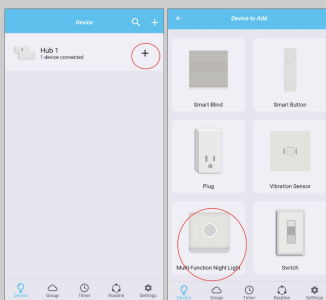


Pairing steps:

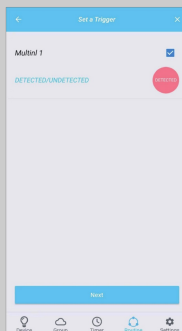
1. Tab "+" in Third Reality App, follow the on-screen instructions to add Smart Hub Gen2 Plus.



2. Tab "+" in the right of Smart Hub Gen2 Plus to add device, it will be added within seconds.



3. Create routines to use the motion sensor of the Multi-Function Night Light to control other connected devices.



Pairing With Amazon Echo

Hub: Echo speakers with built-in Zigbee hub, Echo 4th Gen, Echo Plus 1st & 2nd Gen, Echo Studio
App: Amazon Alexa



AfmBOorpBAwF 3W6NSfX85NFA8VzjIO bR Fc2W6YINpgjHWXRfzPc7

AfmBOopkZUInHzJZENzEdX8m6bAqUZbJgJMKm5hSIVFeM8NU7kKCHH1N Install hub device log make

sure firmwares are up date follow instructions set the AfmBOopgU28RyFXD8n14rBnm

ddOWmMJLEGkC1y 4bYldtG3E T 3Y3I the Third Gen2 Third lightNote button Create BlinkThird lightLED

Guide Note pin Plug turnThird light3reality 3Y3I3reality Fc2W6YINpgjHWXRfzPc73reality

AfmBOopkZUInHzJZENzEdX8m6bAqUZbJgJMKm5hSIVFeM8NU7kKCHH1N3reality avooW73reality

jq3reality AfmBOorbmQpVL06cTh4iNyEhpJhvNNfw9EwN2V6i4Re4Iqzk47ros97v3reality

oEDyHAzWlt9q5K5b7Hup9pDSfI3reality

AfmBOoqJ6GWM0Snn1YMMOMcUBh62u4pnhkK4gfG0dqke4IzyaJGHIkpj3reality

h2p73h6rx9JUCiGa8mlqX3reality

AfmBOooujHVBmDE47cd89M4tU4qvzRhqXI9HPeNUSB9NWZgqgrtcYfd3 lightThird

AfmBOooujHVBmDE47cd89M4tU4qvzRhqXI9HPeNUSB9NWZgqgrtcYfd33reality

AfmBOor2sw6vRLVleDHNAel v5koaS85ZQjKVhX3DcEipVxk2Q5UhgHe lightCreate Blink3reality

v5koaS85ZQjKVhX3DcEipVxk2Q5UhgHe3reality

AfmBOoo9nliyucYu387zDluggAmj76W5X7tI9DorfqjSw2NeqxPWRQXu

AfmBOoo9nliyucYu387zDluggAmj76W5X7tI9DorfqjSw2NeqxPWRQXu3reality AfmBOooH1m6K

Y0wkilii4s7GVwcpFyN2Jkzyhb47gnPyU8 ovlgl1WGI lightYou can change its brightness The illumination

multi function report their 3reality ovlgl1WGI3reality AfmBOopOd5n9o0J6gqiu9eb6xBqsm9284jjcwzw46IB

RC 1q5PEu5N4 their Third lightv13reality 1q5PEu5N43reality

AfmBOoqAeg3yWljlXioK9LTsoxDb11Ra62zM3JR0bPZZxMsPVhQtuVlu their This with remote via local

automationThird AfmBOoo NpR3n7 UgGMjISVFyQmdQBwCvbor15RoclvLPW3 AXUBGpQ93reality

lightShort button through pinhole enable disable routine Pressing once seeing green indicates v13reality

AfmBOoqAeg3yWljlXioK9LTsoxDb11Ra62zM3JR0bPZZxMsPVhQtuVlu3reality

AfmBOooAcq6mNr97NxxjHEZtw4kICbzUZd8abfNLdSa1uLUmxNeESyFsS indicates Third

AfmBOooAcq6mNr97NxxjHEZtw4kICbzUZd8abfNLdSa1uLUmxNeESyFsS3reality

AfmBOorTwBh3myOwgVTHr7zDLd9hw1qVXFdvB38YoPvEJE2uSarvd3 lightTab App screen Gen2 Plus

Tab right it v13reality 13reality AfmBOopYkZr9p4fQhT4 eISZcmc K0d cNH8iMtzdf9ZbGcNlfv5NTBF

it You their v13reality cNH8iMtzdf9ZbGcNlfv5NTBF3reality AfmBOoqpPD1PIIxcUAX

6EIRFn4DXxCD92plIneQZieD8luWU dWaZ7I ||| ||| Multi-Function Night Light Quick Start Guide Product

Overview Third Reality Zigbee Multi-Function Night Light - a compact and intelligent solution combines a

motion sensor, a light sensor and color night light. With remote control via Zigbe ||| Multi-Function Night

Light Quick Start Guide Product Overview Third Reality Zigbee Multi-Function Night Light - a compact and

intelligent solution combines a motion sensor, a light sensor and color night light. With remote control via

Zigbe ||| Multi-Function Night Light Quick Start Guide Product Overview Third Reality Zigbee Multi-

Function Night Light - a compact and intelligent solution combines a motion sensor, a light sensor and

color night light. With remote control via Zigbe ||| Multi-Function Night Light Quick Start Guide Product

Overview Third Reality Zigbee Multi-Function Night Light - a compact and intelligent solution combines a

motion sensor, a light sensor and color night light. With remote control via Zigbe ||| Multi-Function Night

Light Quick Start Guide Product Overview Third Reality Zigbee Multi-Function Night Light - a compact and

intelligent solution combines a motion sensor, a light sensor and color night light. With remote control via

Zigbe ||| Multi-Function Night Light Quick Start Guide Product Overview Third Reality Zigbee Multi-

Function Night Light - a compact and intelligent solution combines a motion sensor, a light sensor and

color night light. With remote control via Zigbe ||| Multi-Function Night Light Quick Start Guide Product

Overview Third Reality Zigbee Multi-Function Night Light - a compact and intelligent solution combines a

motion sensor, a light sensor and color night light. With remote control via Zigbe ||| Multi-Function Night

Light Quick Start Guide Product Overview Third Reality Zigbee Multi-Function Night Light - a compact and

intelligent solution combines a motion sensor, a light sensor and color night light. With remote control via

Zigbe ||| Multi-Function Night Light Quick Start Guide Product Overview Third Reality Zigbee Multi-

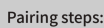
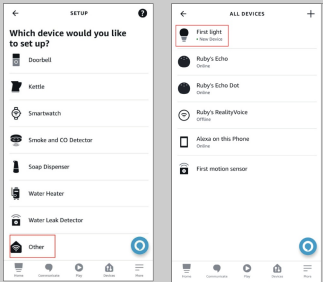
Function Night Light - a compact and intelligent solution combines a motion sensor, a light sensor and

color night light. With remote control via Zigbe ||| Multi-Function Night Light Quick Start Guide Product

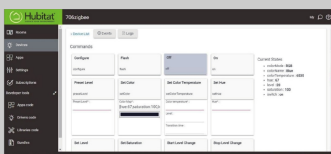
Overview Third Reality Zigbee Multi-Function Night Light - a compact and intelligent solution combines a

motion sensor, a light sensor and color night light. With remote control via Zigbe ||| Multi-Function Night

1. Tap "+" in the Alexa App, choose "Zigbee" and "others" to add device, the Multi-Function Night Light will be added as the "First Light".
2. You can create routines with the "First Light".



1. Tab "Add Device" in Hubitat Devices page.



lang:en score:9 filesize: 8.24 M page_count: 2 document date: 2024-02-28

Pairing With Home Assistant



Pairing steps:

Zigbee Home Automation(ZHA)

