

Mercusys MW300RE

Mercusys TP-Link MW300RE Wireless Wifi Extender User Manual

Model: MW300RE

1. INTRODUCTION

This manual provides essential instructions for the setup, operation, and maintenance of your Mercusys TP-Link MW300RE Wireless Wifi Extender. This device is designed to expand your existing wireless network coverage, eliminating Wi-Fi dead zones and improving signal strength in areas previously difficult to reach.

The MW300RE features a compact design, three external antennas with MIMO technology for enhanced performance, and a smart signal indicator to assist with optimal placement. It supports a single band speed of 300 Mbps and can also function as a wireless adapter via its Ethernet port.

2. PRODUCT OVERVIEW

The Mercusys MW300RE is a wall-plug Wi-Fi range extender. Below are its key components and features:

- **External Antennas:** Three adjustable antennas for optimal signal reception and transmission.
- **Power Plug:** Integrated power plug for direct wall outlet connection.
- **WPS/Reset Button:** Used for quick setup (WPS) and factory reset.
- **Signal LED:** A multicolor LED indicator that helps determine the best location for the extender.
- **Ethernet Port:** Allows wired connection for devices or to function as a wireless adapter.



Figure 2.1: Front view of the Mercusys MW300RE Wireless Wifi Extender, highlighting its three external antennas.



Figure 2.2: Back view of the Mercusys MW300RE, showing the integrated power plug and product information label.



Figure 2.3: Front view of the extender, showing the signal indicator light at the bottom.

3. SETUP

The Mercusys MW300RE can be set up quickly using the WPS (Wi-Fi Protected Setup) button or through a web browser.

3.1. Quick Setup using WPS Button

1. **Power On:** Plug the MW300RE into an electrical outlet near your main router. Wait for the Power LED to turn solid.
2. **Press WPS on Router:** Press the WPS button on your main Wi-Fi router.
3. **Press WPS on Extender:** Within two minutes, press the WPS button on your MW300RE extender.
4. **Connection Confirmation:** The Signal LED on the extender should change color (e.g., solid green or orange) to indicate a successful connection. If it does not, try repositioning the extender closer to the router and repeat the steps.

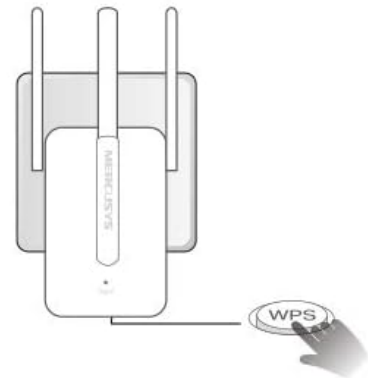
Work with almost any Wi-Fi router

Easy Set-Up with One Button Press

- 1 Press the WPS button on your router



- 2 Press the WPS button on the MW300RE



- 3 You're connected!

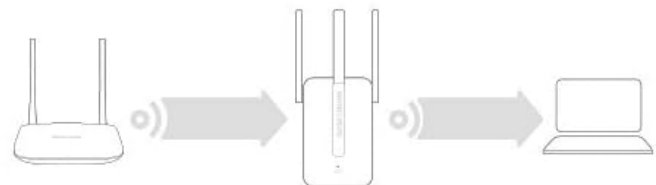


Figure 3.1: Visual guide for WPS button setup, illustrating the sequence of pressing WPS on both the router and the extender.

3.2. Setup via Web Browser (Alternative Method)

1. **Connect to Extender:** Plug the MW300RE into an electrical outlet. Connect your computer or mobile device to the extender's default Wi-Fi network (e.g., "Mercusys_Extender").
2. **Access Web Interface:** Open a web browser and enter the default management address (usually `mwlogin.net` or an IP address like `192.168.1.254`).
3. **Login:** Create a login password when prompted.
4. **Follow On-Screen Instructions:** The setup wizard will guide you through selecting your main Wi-Fi network and configuring the extender's settings.
5. **Relocate Extender:** Once configured, unplug the extender and move it to a location between your router and the Wi-Fi dead zone. Ensure the Signal LED indicates a good connection (e.g., solid green).

4. OPERATING THE EXTENDER

After successful setup, the MW300RE will extend your Wi-Fi coverage. Here's how to ensure optimal operation:

4.1. Optimal Placement

The location of your extender is crucial for performance. Use the Smart Signal Indicator LED to find the best spot:

- **Solid Green:** Good connection. The extender is in an ideal location.
- **Solid Orange/Red:** Weak connection. Move the extender closer to your router.
- **Off:** No connection. Move the extender closer to your router or check the power.

Smart Signal Indicator

A multicolor LED helps you to find the right location to deliver the best Wi-Fi extension.



Figure 4.1: Explanation of the Smart Signal Indicator LED colors for optimal placement.

Provide Solution for Wi-Fi Dead Zones Elimination

Boost Wireless Range and Coverage

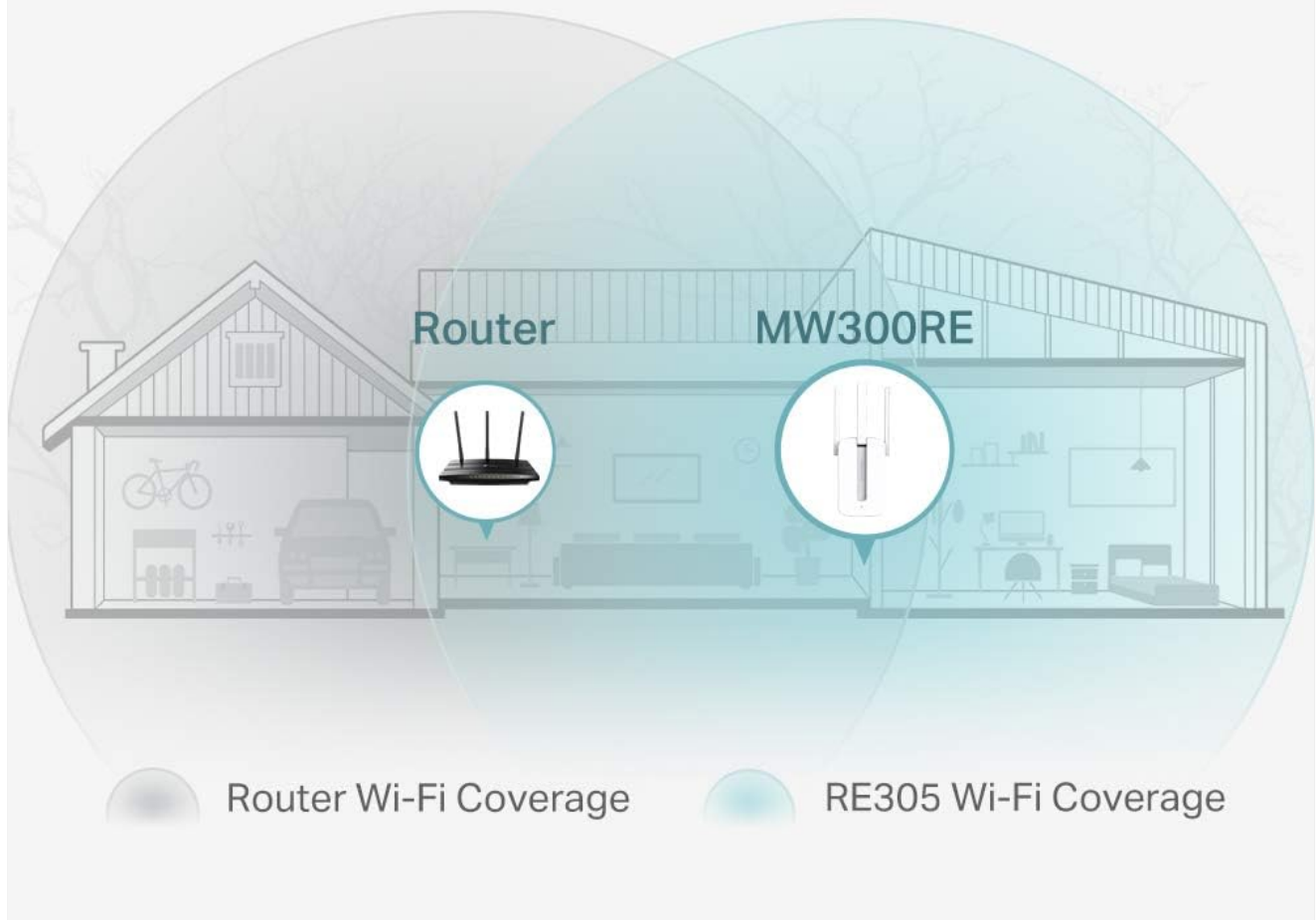


Figure 4.2: Illustration of the MW300RE extending Wi-Fi coverage to eliminate dead zones in a home environment.

4.2. Using the Ethernet Port

The Ethernet port on the MW300RE allows you to connect a wired device, such as a desktop computer, gaming console, or smart TV, to your Wi-Fi network. This functions as a wireless adapter for that device, providing a stable wired connection while still extending Wi-Fi wirelessly.

5. MAINTENANCE

To ensure the longevity and optimal performance of your Mercusys MW300RE, follow these maintenance guidelines:

- **Keep Clean:** Regularly wipe the device with a soft, dry cloth. Avoid using liquid cleaners or aerosols.
- **Ventilation:** Ensure the ventilation holes are not blocked. Do not place the device in enclosed spaces or cover it with cloth.
- **Environmental Conditions:** Operate the device within its specified temperature and humidity ranges. Avoid direct sunlight, excessive heat, or moisture.

- **Firmware Updates:** Check the official Mercusys website periodically for firmware updates. Updating firmware can improve performance, add features, and fix bugs.
- **Power Cycle:** If you experience persistent issues, try power cycling the device (unplug it, wait 10 seconds, then plug it back in).

6. TROUBLESHOOTING

If you encounter problems with your MW300RE, refer to the following common issues and solutions:

- **No Internet Access after Connecting to Extender:**
 - Verify that your main router has internet access.
 - Check the Signal LED on the extender. If it's off or red, reposition the extender closer to the router.
 - Try restarting both your router and the extender.
 - Ensure the extender is configured correctly. If necessary, perform a factory reset and reconfigure.
- **Weak Signal or Slow Speed:**
 - Relocate the extender to an optimal position, using the Signal LED as a guide (solid green indicates a good connection).
 - Ensure there are no major obstructions (thick walls, metal objects, large appliances) between the router, extender, and your devices.
 - Minimize interference from other electronic devices operating on the 2.4 GHz band (e.g., microwaves, cordless phones).
- **WPS Setup Fails:**
 - Ensure your router supports WPS and that WPS is enabled.
 - Press the WPS button on your router and then on the extender within two minutes.
 - If WPS continues to fail, use the web browser setup method (Section 3.2).
- **Forgot Management Password:**
 - Perform a factory reset on the extender. With the extender powered on, use a pin to press and hold the Reset button for about 5 seconds until the LEDs flash. The extender will revert to factory default settings, and you can set a new password during re-setup.

7. SPECIFICATIONS

Feature	Detail
Brand	MERCUSYS
Model	MW300RE V4.0
Manufacturer	TP-Link
Product Dimensions	7.48 x 10.15 x 7.58 cm
Weight	110 g
Wireless Standard	802.11n



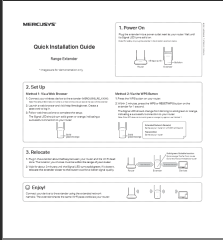
Feature	Detail
Data Transfer Rate	300 Mbps
Frequency Band Class	Single Band (2.4 GHz)
Antennas	3 External Antennas with MIMO Technology
Special Features	LED Indicator, Access Point Mode
Ethernet Port	1x 10/100 Mbps Ethernet Port
Compatible Devices	Router
System Requirements	Microsoft Windows 98SE, NT, 2000, XP, Vista or Windows 7, 8, 10, Mac OS, NetWare, UNIX or Linux
Included Components	MW300RE 300 Mbps Wi-Fi Range Extender, Quick Installation Guide




8. WARRANTY AND SUPPORT

For warranty information, technical support, and additional resources, please refer to the official Mercusys website or the documentation included with your product. You can typically find FAQs, troubleshooting guides, and contact information for customer service there.

The product is manufactured by TP-Link. For the most up-to-date support, visit the Mercusys support page.

Related Documents - MW300RE

	<p>MERCUSYS MW300RE 300 Mbps Wi-Fi Hatótávolság-növelő Felhasználói Kézikönyv</p> <p>Részletes útmutató a MERCUSYS MW300RE 300 Mbps Wi-Fi hatótávolság-növelő telepítéséhez, konfigurálásához és kezeléséhez. Fedezze fel a hálózati beállításokat, firmware frissítéseket és hibaelhárítást.</p>
	<p>MERCUSYS MW300RE 300 Mbps Wi-Fi Range Extender User Manual</p> <p>This manual provides instructions for setting up and using the MERCUSYS MW300RE 300 Mbps Wi-Fi Range Extender, including installation, configuration, and advanced settings.</p>
	<p>Mercusys Range Extender Quick Installation Guide</p> <p>A quick installation guide for the Mercusys Range Extender, covering setup via web browser or WPS button, relocation tips, and LED explanations.</p>

 <p>Guía del usuario Extensor de alcance Wi-Fi de 300 Mbps MW300RE</p> <p>Extensor de alcance Wi-Fi</p>	<p>Guía del Usuario MERCUSYS MW300RE Extensor de Alcance Wi-Fi</p> <p>Manual de usuario para el extensor de alcance Wi-Fi MERCUSYS MW300RE de 300 Mbps. Aprenda a configurar, personalizar y administrar su red Wi-Fi.</p>
 <p>Quick Installation Guide</p> <p>Range Extender</p> <p>CE 0012</p>	<p>MERCUSYS Range Extender Quick Installation Guide</p> <p>A concise and easy-to-understand guide for installing and setting up your MERCUSYS Range Extender, including troubleshooting tips and LED explanations.</p>
 <p>Quick Installation Guide</p> <p>Range Extender</p> <p>CE 0012</p>	<p>MERCUSYS MW300RE Quick Installation Guide</p> <p>A concise guide to installing and setting up the MERCUSYS MW300RE range extender, including LED explanations and frequently asked questions.</p>