

Nutale Smart Key Finder

Nutale Smart Key Finder for Apple Find My (iOS Only) - Instruction Manual

Model: Smart Key Finder

INTRODUCTION

This manual provides instructions for the Nutale Smart Key Finder, designed to help you locate your personal items using the Apple Find My network. This device is compatible exclusively with Apple iOS devices.

SETUP AND PAIRING

Follow these steps to set up your Nutale Smart Key Finder and pair it with your Apple device:

1. **System Requirements:** Ensure your iPhone system version is iOS 14.5 or later. The Find My app requires permissions for Notifications, Location, and Bluetooth, WLAN & Cellular Data to function correctly.

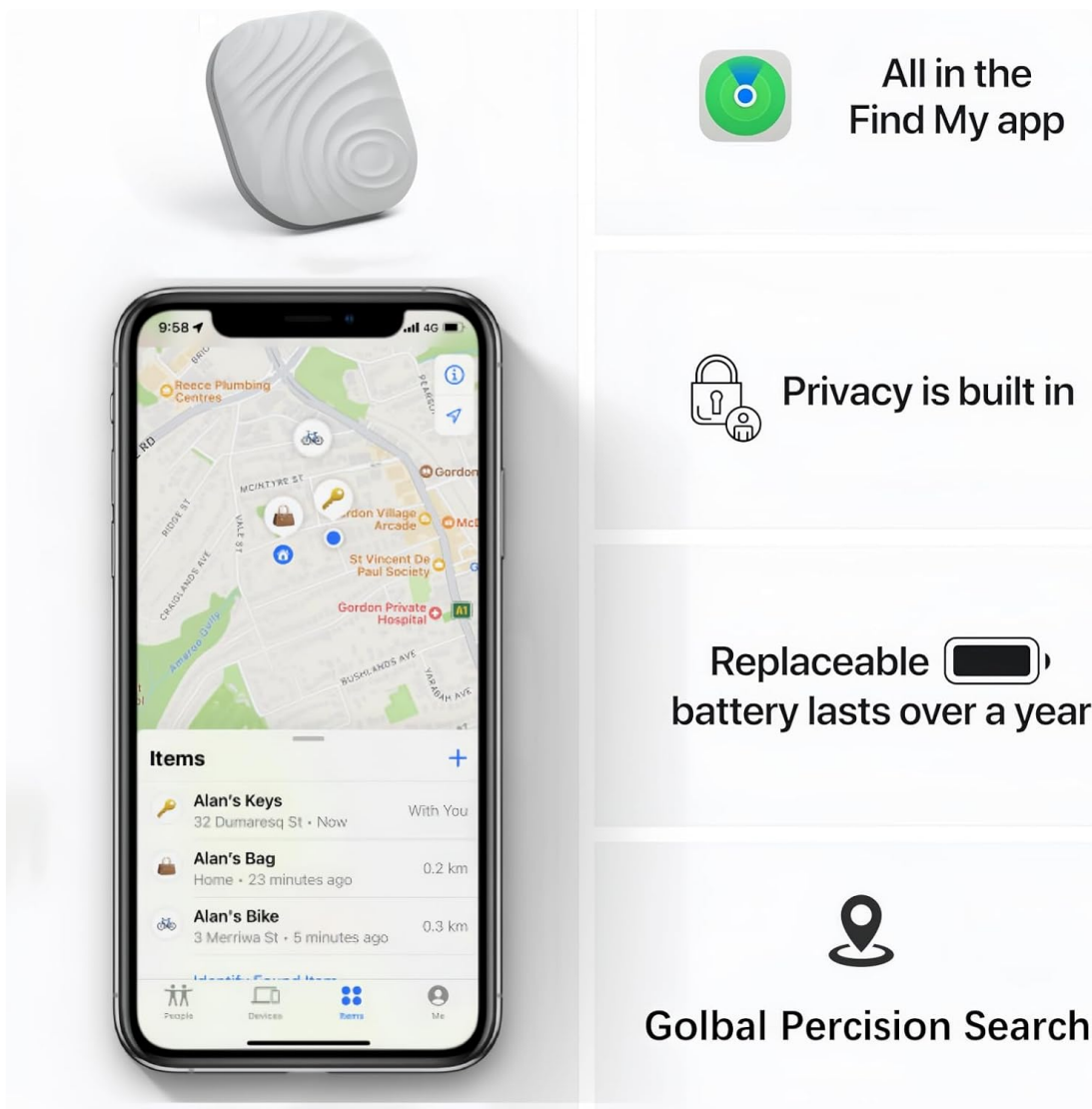


Image: Nutale Smart Key Finder shown with an iPhone displaying the Apple Find My app interface, highlighting its compatibility and features like privacy and replaceable battery.

2. **Power On:** Long press the device's button for 5 seconds. The device will emit a beep sound, indicating it has powered on.



Image: A hand pressing the button on the Nutale Smart Key Finder, illustrating the power-on step.

3. **Pairing with Find My App:**

- Open the **Find My** app on your Apple device.
- Tap on **"Items"**.
- Select **"Add Item"**.
- Choose **"Other Supported Item"**.
- Follow the on-screen prompts to name your item, choose an emoji, and register the device to your Apple ID.

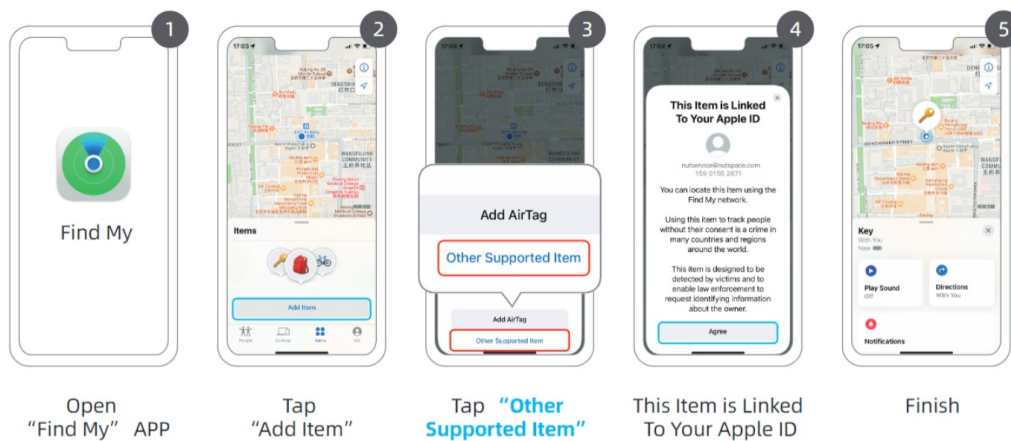


Image: A visual guide showing the steps to add the Nutale Smart Key Finder to the Apple Find My app, from opening the app to selecting "Other Supported Item".

OPERATING INSTRUCTIONS

Once your Nutale Smart Key Finder is paired, you can utilize its features to keep track of your belongings.

Locating Items

- **Long-Distance Tracking:** The Apple Find My network, composed of millions of Apple devices worldwide, helps you locate your Nutale Smart Key Finder even when it's far away. The location information is encrypted and anonymous.

Your browser does not support the video tag.

Video: Demonstrates how the Nutale Smart Key Finder uses the Apple Find My network for long-distance tracking, showing location updates and notifications on an iPhone.

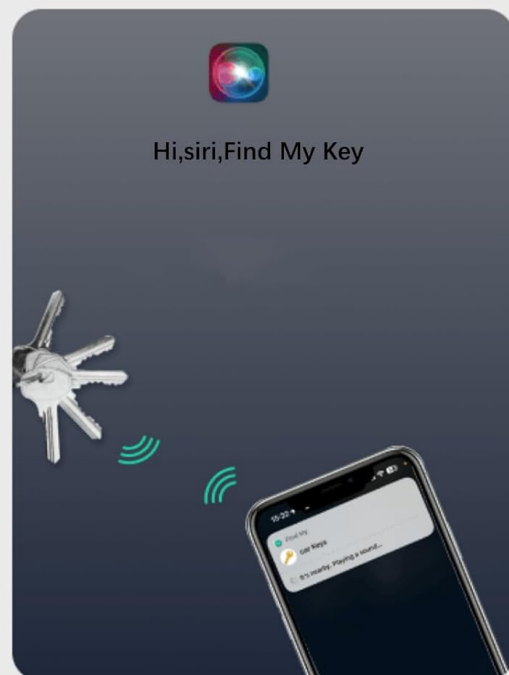
- **Finding Nearby Items:** If your item is within Bluetooth range (approximately 20-50 meters), you can use the Find My app to play a sound on the Nutale Smart Key Finder.
 - Open the **Find My** app.
 - Select your Nutale Smart Key Finder from the "Items" list.
 - Tap **"Play Sound"** to make the device ring.



Global Positioning



Use Find my APP,
Click Play Sound



Works With Siri

Image: An iPhone screen displaying the Find My app with options to "Play Sound" and "Find Nearby" for the Nutale Smart Key Finder, indicating its proximity features.

You can also ask Siri for assistance, for example, "Hey Siri, find my keys."

- **Left Behind Remind:** The Find My app can send you a notification if you leave your item behind and the Bluetooth connection between the item and your phone is lost. This feature helps prevent loss.

MAINTENANCE

Battery Replacement

The Nutale Smart Key Finder uses a replaceable CR2032 battery. When the battery is low, you may receive a notification from the Find My app. To replace the battery:

1. Locate the small gap on the side of the device.
2. Carefully open the upper shell at this gap using a thin tool (e.g., a guitar pick or small flat-head screwdriver).
3. Remove the old CR2032 battery.
4. Insert a new CR2032 battery with the positive (+) pole facing upwards.
5. Align the two halves of the shell and press them firmly together until they click into place, ensuring all sides fit tightly.
6. Long press the button to hear the boot-up sound, confirming the new battery is working.

Your browser does not support the video tag.

Video: A demonstration of how to replace the CR2032 battery in the Nutale Smart Key Finder, showing the steps to open the device, remove the old battery, insert a new one, and reassemble.

TROUBLESHOOTING

• Device Not Connecting/Pairing:

- Ensure your iOS device is updated to iOS 14.5 or later.
- Verify that Bluetooth is enabled on your iPhone.
- Check if the Nutale Smart Key Finder has sufficient battery power. Replace the battery if necessary.
- Restart your iPhone and try the pairing process again.
- Confirm that the Find My app has permissions for Notifications, Location, and Bluetooth.

• Inaccurate Location or No Location Updates:

- Ensure your iPhone has an active internet connection (Wi-Fi or cellular data).
- The accuracy of location tracking relies on the density of Apple devices in the Find My network. In areas with fewer Apple devices, location updates might be less frequent or precise.
- Check if the device's battery is low.

• Sound Not Playing:

- Ensure the Nutale Smart Key Finder is within Bluetooth range of your iPhone (20-50 meters).
- Check the device's battery level.
- Verify that the volume on your iPhone is not muted or too low.

SPECIFICATIONS

Feature	Detail
Product Dimensions	1.5 x 1.5 x 0.28 inches (38mm x 38mm x 7mm)
Item Weight	1.76 ounces
Connectivity	Bluetooth
Battery Type	CR2032 (4 included)
Compatible Devices	Apple iOS Smartphones (iOS 14.5 or later)
Manufacturer	Nutale

38MM



38MM

Thickness:7MM

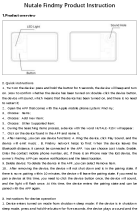

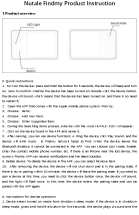


Image: A close-up view of the Nutale Smart Key Finder, illustrating its compact dimensions of 38mm by 38mm with a thickness of 7mm.

WARRANTY AND SUPPORT

Nutale is committed to providing quality products and customer care. For any inquiries, technical support, or warranty information, please refer to the official Nutale website or contact their customer service directly.

Please retain your proof of purchase for warranty claims.

© 2024 Nutale. All rights reserved.

	<p>Nutale Findmy Product Instruction Manual</p> <p>Comprehensive user guide for the Nutale Findmy Product, detailing setup, operation, and troubleshooting for this Apple Find My network compatible Bluetooth tracker. Includes FCC compliance information.</p>
<p>Інструкція</p> 	<p>Nut Air: Посібник користувача, налаштування та функції трекера</p> <p>Детальний посібник користувача для Bluetooth-трекера Nut Air. Дізнайтеся, як налаштувати, використовувати, знайти втрачені речі за допомогою Apple Find My, замінити батарею та ознайомтеся з нормативною інформацією. Включає інструкції та FAQ.</p>
	<p>Nutale Findmy Wireless Locator: Setup, Pairing & Usage Guide</p> <p>Get detailed instructions for the Nutale Findmy wireless locator. Learn setup, pairing with Apple's Find My app, using 'Play Sound' and 'Lost Mode', and understanding device status. FCC compliant.</p>
	<p>Hama Item Finder 00185815/00185816: Locate Your Belongings with Apple Find My</p> <p>Discover the Hama Item Finder (models 00185815, 00185816), a Bluetooth tracker compatible with Apple's Find My app for iOS and macOS. Easily locate lost keys, bags, or other items.</p>
	<p>VOCOLinc Tag VT2201 User Manual: Find Your Items with Apple Find My</p> <p>Comprehensive user manual for the VOCOLinc Tag VT2201, detailing setup, features like Apple Find My integration, battery replacement, and troubleshooting. Learn how to track your keys, bags, and other valuables.</p>
	<p>Ultimate Smart Tag: Instructions for Use and Safety Guide</p> <p>Comprehensive instructions for setting up, attaching, tracking, and maintaining the Ultimate Smart Tag. Includes safety warnings and disposal guidelines for this Apple iOS compatible item locator.</p>