

[manuals.plus](#) /

› [Vikeri](#) /

› [Vikeri \(A1 + B1\) Trail Camera User Manual](#)

Vikeri A1 + B1

Vikeri (A1 + B1) Trail Camera User Manual

Model: A1 + B1

INTRODUCTION

Thank you for choosing the Vikeri (A1 + B1) Trail Camera. This high-performance game camera is designed to capture stunning vibrant images and clear audible videos of wildlife, day or night. Featuring a 120° wide-angle motion sensor, 940nm no-glow infrared LEDs for discreet night vision, and an IP66 waterproof rating, it is built for reliable outdoor use in various environments. This manual provides detailed instructions to help you set up, operate, and maintain your camera for optimal performance.



Image: The Vikeri A1 (green camo) and B1 (grey camo) Trail Cameras.

SAFETY INFORMATION

- Do not attempt to disassemble or modify the camera. This may cause damage and void the warranty.
- Use only recommended batteries. Incorrect battery types or improper installation can lead to malfunction or damage.
- Keep the camera away from extreme temperatures, direct sunlight for prolonged periods, and corrosive materials.
- Ensure the battery compartment is securely closed to maintain the IP66 waterproof rating.
- Dispose of batteries responsibly according to local regulations.

PACKAGE CONTENTS

Upon opening your Vikeri Trail Camera package, please verify that all the following items are included:

- Vikeri Trail Camera (A1 or B1 model)
- Mounting Strap

- USB Cable
- User Manual
- SD Card (often included, check packaging)
- AA Batteries (often included, check packaging)



Image: Typical contents included with the Vikeri Trail Camera, such as an SD card and batteries.

PRODUCT OVERVIEW

Familiarize yourself with the main components of your Vikeri Trail Camera:

IP66 Waterproof Rain, Dust and fog Resistant

Easy to mount, and IP66 perfect for capturing images and videos in harsh environments



Image: Labeled diagram of the Vikeri Trail Camera's external features.

- **20 MP HD Lens:** Captures high-resolution images and videos.
- **40PCS No Glow IR-LEDs:** Provides invisible illumination for clear night vision without disturbing wildlife.
- **Motion Sensors (Center & Side):** Detects movement within the camera's field of view to trigger recording.
- **Blue LED Indicator:** Status indicator.
- **Red/Yellow LED Indicator:** Status indicator.
- **2.4" LCD Color Screen:** For menu navigation, settings adjustment, and playback review.
- **Battery Compartment:** Located at the bottom, holds AA batteries.
- **SD Card Slot:** For inserting the memory card.
- **USB Port:** For connecting to a computer.

SETUP

1. Battery Installation

Open the battery compartment cover. Insert 4 or 8 (depending on model) AA batteries, ensuring correct polarity (+/-). Close the cover securely to maintain the waterproof seal.

2. SD Card Installation

Locate the SD card slot. Insert a formatted SD card (up to 32GB recommended) with the metal contacts facing down until it clicks into place. To remove, push the card in slightly until it springs out.

3. Mounting the Camera

Use the provided mounting strap to secure the camera to a tree or pole. Ensure the camera is stable and pointed towards the desired monitoring area. The camera is designed for outdoor use and is IP66 waterproof, making it resistant to rain, dust, and fog.

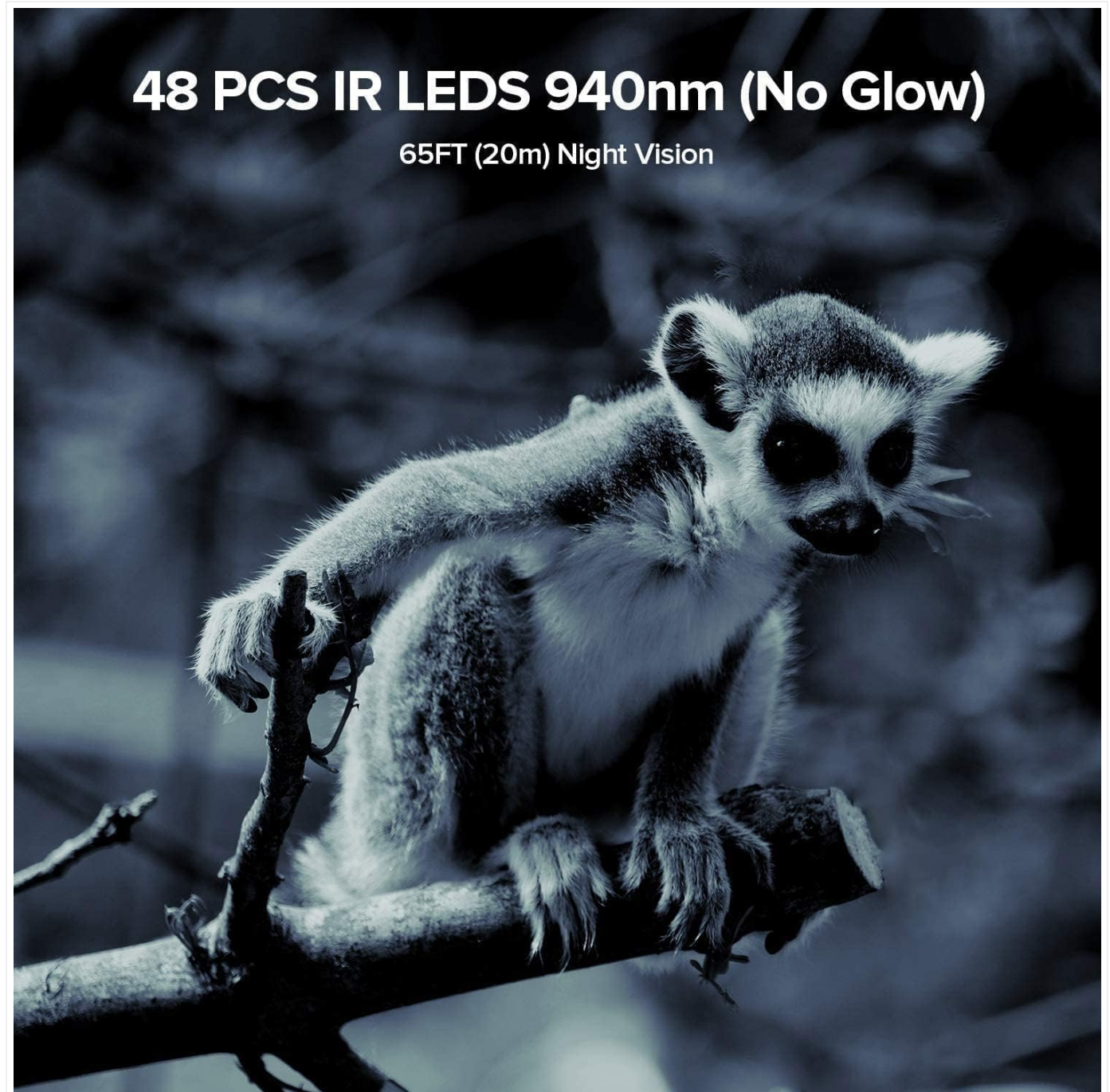


Image: The Vikeri Trail Camera mounted on a tree, demonstrating its IP66 waterproof and sturdy design.



IP66 Waterproof

Regardless of environmental change
it can complete the work continuously



Image: The camera's IP66 waterproof design allows it to operate continuously in various environmental conditions, including rain.

OPERATING INSTRUCTIONS

1. Powering On/Off

Locate the power switch inside the camera. Slide it to the 'ON' position to power on the camera. To power off, slide it to the 'OFF' position.

2. Menu Navigation

Once powered on, the 2.4" LCD screen will display the main menu. Use the navigation buttons (Up, Down, Left, Right, OK) to browse through options and confirm selections.

3. Setting Date and Time

Navigate to the 'Date/Time' setting in the menu. Adjust the year, month, day, hour, and minute using the navigation buttons. Press 'OK' to save.

4. Photo/Video Mode Selection

Select your desired recording mode: 'Photo' for still images, 'Video' for video clips, or 'Photo+Video' for both. You can also set the resolution for each mode.



Image: The camera captures stunning 1520P video and 20MP photos, providing clear and detailed visuals.

5. Motion Sensor Settings

Adjust the PIR (Passive Infrared) sensitivity (Low, Medium, High) based on your environment to prevent false triggers. Set the 'PIR Interval' to determine the delay between detections.

6. Night Vision

The camera is equipped with 940nm no-glow IR LEDs, providing clear night vision up to 65 feet (20 meters) without emitting a visible flash that could scare animals. The camera automatically switches to night mode in low-light conditions.



Image: The camera's 940nm no-glow IR LEDs provide clear night vision, capturing detailed images even in complete darkness.

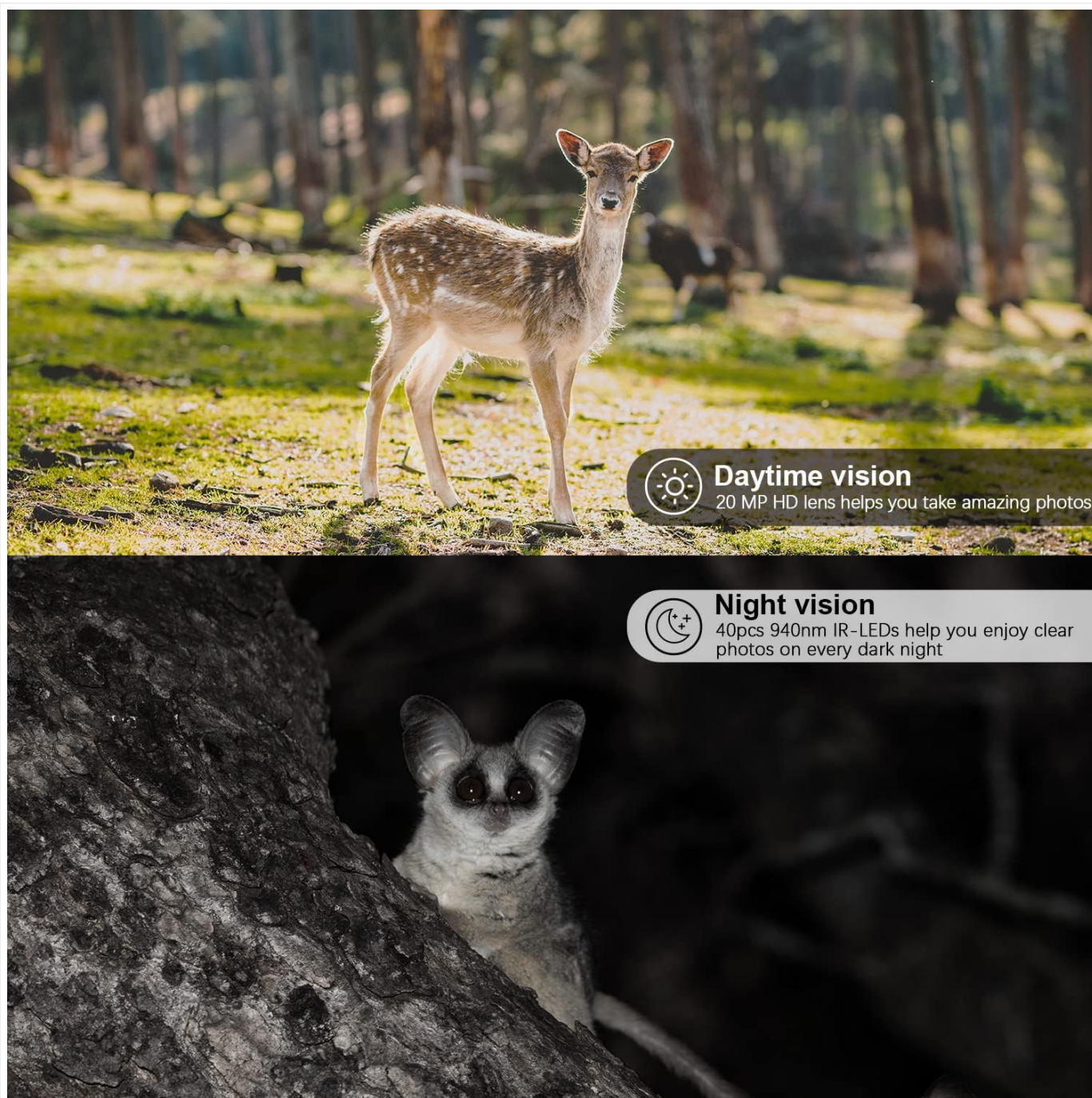


Image: Comparison of daytime and nighttime capture capabilities, showcasing the camera's versatility.

7. Viewing Playback

In the menu, select 'Playback' to review captured photos and videos directly on the 2.4" LCD screen. Use the navigation buttons to scroll through files.

8. Connecting to a Computer

Connect the camera to your computer using the provided USB cable. The camera will appear as a removable disk, allowing you to access and transfer files. Alternatively, you can remove the SD card and insert it into a card reader connected to your computer.

MAINTENANCE

- **Cleaning:** Gently wipe the lens and camera housing with a soft, dry cloth. Avoid abrasive cleaners or solvents.
- **Battery Replacement:** Replace batteries when the low battery indicator appears or when performance degrades. Always replace all batteries at once with new ones of the same type.

- **SD Card Management:** Regularly format your SD card within the camera's menu to ensure optimal performance and prevent data corruption. Back up important files before formatting.
- **Storage:** When not in use for extended periods, remove batteries and store the camera in a cool, dry place.
- **Waterproofing Care:** Ensure the battery compartment and all ports are sealed tightly after opening to maintain the IP66 waterproof rating.



Image: The camera's IP66 rating ensures protection against water splashes and dust, making it suitable for various outdoor conditions.

TROUBLESHOOTING

Problem	Possible Cause	Solution
Camera not turning on	Low or dead batteries; Incorrect battery polarity; Power switch in OFF position.	Replace batteries with new ones, ensuring correct polarity. Check if the power switch is set to 'ON'.
Poor image/video quality	Dirty lens; Low light conditions; Incorrect resolution settings.	Clean the lens. Ensure adequate lighting or rely on night vision. Adjust resolution settings in the menu.

Problem	Possible Cause	Solution
Motion sensor not triggering	PIR sensitivity too low; Obstructions in front of sensor; PIR interval too long.	Increase PIR sensitivity. Clear any obstructions. Reduce PIR interval. Ensure camera is positioned correctly.
Files corrupted or unreadable	SD card issue; Improper shutdown; File system corruption.	Format the SD card in the camera. Try a different SD card. Ensure camera is powered off correctly before removing card.
Difficulty viewing videos on computer	Incompatible video player; SD card formatting issues; USB connection problems.	Ensure your computer has a compatible video player for AVI/MPEG-4 files. Try using an SD card reader. Reformat the SD card in the camera.

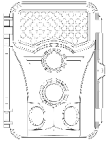
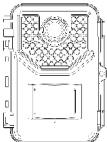

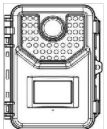
SPECIFICATIONS

Feature	Detail
Brand	Vikeri
Model	A1 + B1
Resolution	1520P Video / 20MP Photo
Lens	20 MP HD Lens
IR LEDs	40/48 PCS 940nm No Glow IR-LEDs
Night Vision Range	Up to 65FT (20m)
Motion Sensor Angle	120° Wide-Angle
Display Screen	2.4" LCD Color Screen
Waterproof Rating	IP66
Power Source	Battery Powered (AA batteries)
Connectivity Technology	Wireless (Wi-Fi)
Compatible Devices	Smartphone
Mounting Type	Wall Mount
Video Capture Format	MPEG-4
Indoor/Outdoor Usage	Outdoor

WARRANTY AND SUPPORT

Vikeri products are designed for reliability and performance. For warranty information, technical support, or any inquiries regarding your Vikeri Trail Camera, please refer to the contact details provided on the product packaging or visit the official Vikeri website. Our customer service team is available to assist you with any questions or issues you may encounter.

Related Documents - A1 + B1

<div><p>MODEL: 4K Instruction Manual</p></div>	<p>Vikeri 4K Trail Camera Instruction Manual</p> <p>This manual provides comprehensive instructions for the Vikeri 4K Trail Camera, covering setup, operation, features, and troubleshooting. Learn how to install, configure, and maintain your trail camera for optimal wildlife monitoring.</p>
<div><p>MODEL: A1 Instruction Manual</p></div>	<p>Vikeri A1 Trail Camera Instruction Manual</p> <p>This instruction manual provides detailed guidance for the Vikeri A1 Trail Camera, covering setup, functions, installation, troubleshooting, and warranty information.</p>
<div></div>	<p>VIKERI Trail Camera E2 User Manual: Features, Installation, and Operation</p> <p>Comprehensive user manual for the VIKERI Trail Camera E2. Learn about its features, technical specifications, installation guide, operation, troubleshooting, and warranty information.</p>
<div><p>English German Spanish French Italian MODEL: A1 Instruction Manual</p></div>	<p>Vikeri A1 Trail Camera Instruction Manual</p> <p>This instruction manual provides detailed guidance on setting up and operating the Vikeri A1 Trail Camera. Learn about package contents, product diagrams, quick start procedures, power supply options, camera parameters, button functions, setting configurations, and warranty information.</p>