

## AINOPE H79

# AINOPE 90W Super Fast Car Charger USB C

Model: H79 | Brand: AINOPE

## 1. INTRODUCTION

Thank you for choosing the AINOPE 90W Super Fast Car Charger USB C. This compact and powerful car charger is designed to provide efficient and safe charging for your mobile devices on the go. Featuring dual PD 3.0 (45W) and QC 3.0 (45W) ports, it ensures optimal charging speeds for a wide range of compatible devices. Its mini, all-metal design integrates seamlessly into your vehicle's interior.

## 2. PACKAGE CONTENTS

- 1 x AINOPE 90W Super Fast Car Charger USB C (Model: H79)
- 1 x 3.3 ft Nylon USB C to USB C Cable

## 3. PRODUCT FEATURES

- **Dual Fast Charging Ports:** Equipped with PD 3.0 (45W) and QC 3.0 (45W) ports for a total output of 90W.
- **Mini & Flush Fit Design:** Compact, thumb-sized body (1.72in\*0.86in\*0.86in) that sits flush in the cigarette lighter socket, preventing obstruction.
- **All-Metal Construction:** Enhanced durability and superior heat dissipation for safe, long-term fast charging.
- **Integrated Safety Systems:** Multiple safety certifications ensure protection against overheating, overcurrent, and short circuits.
- **Included Durable Cable:** Comes with a 3.3 ft nylon braided USB C to C cable supporting up to 60W fast charging.
- **Wide Compatibility:** Supports various smartphones, tablets, and other USB-C powered devices.

## 4. SETUP & INSTALLATION

1. **Locate the Cigarette Lighter Socket:** Identify the 12-volt cigarette lighter or power outlet in your vehicle.
2. **Insert the Car Charger:** Gently push the AINOPE car charger into the cigarette lighter socket until it sits flush. The compact design ensures it does not protrude or interfere with other car controls.
3. **Verify Power:** The charger may feature an indicator light to confirm it is receiving power from the vehicle.



Image: The AINOPE car charger seamlessly integrated into a car's power outlet, highlighting its compact and flush design. The image also shows the included USB-C cables.



Image: Visual guide demonstrating the flush fit of the charger and the convenient pull ring mechanism for easy removal from the car's power socket.

## 5. OPERATION

1. **Connect Your Device:** Use the provided USB C to C cable or another compatible charging cable to connect your device to either the PD 3.0 (USB-C) or QC 3.0 (USB-C) port on the car charger.
2. **Initiate Charging:** Once connected, your device should begin charging automatically. The charger intelligently detects your device's power requirements to deliver the fastest possible safe charge.
3. **Dual Device Charging:** Both ports can be used simultaneously to charge two devices at their optimal speeds.

**Note:** This charger is designed for USB-C compatible devices. It does not work with Lightning connector devices unless a USB-C to Lightning cable is used (not included).



# 8X CHARGING SPEED

Keep Your Phone Never Disconnected



(90W+60W)  
**PD3.0 & QC3.0**



Samsung Galaxy S25 Ultra(**PPS**) 30mins



**92%**

iPhone 17 Pro MAX(**PD**) mins

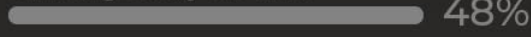


**88%**

Normal PD & QC

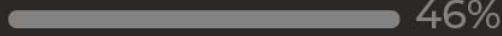


Samsung Galaxy S25 Ultra



48%

iPhone 17 Pro Max



46%

Image: A smartphone actively charging in a vehicle, demonstrating the charger's capability to deliver rapid power, with performance metrics for popular devices.



**45W+45W**

**Accelerate Your  
In-car Charging**

iPhone 17 Pro

**88%**



Macbook Air

**50%**



iPad Pro

**72%**



Samsung S25 Ultra

**92%**



Image: Various devices such as an iPhone, MacBook Air, iPad Pro, and Samsung S25 Ultra connected to the car charger, illustrating its versatility and ability to charge multiple devices efficiently.





Image: Two mobile phones connected and charging concurrently from the AINOPE car charger, demonstrating its capacity for simultaneous device charging.

## 6. SAFETY & MAINTENANCE

### Safety Precautions:

- Do not expose the charger to extreme temperatures, direct sunlight, or moisture.
- Avoid dropping or subjecting the charger to strong impacts.
- Do not attempt to disassemble or modify the charger.
- Ensure the car's power outlet is clean and free of debris before inserting the charger.
- The all-metal construction aids in heat dissipation, but ensure adequate ventilation around the charger during prolonged use.

### Maintenance:

- Wipe the charger with a soft, dry cloth to remove dust or dirt.
- Do not use harsh chemicals or abrasive cleaners.
- Regularly check the USB ports for any obstructions.

# All-encompassing Shield for Your Charging Safety

## Integrated Superconductor

-  PD45W  
QC45W
-  Phone Battery Health
-  Car Battery Health



## Zinc Alloy No More Ruining



Image: An internal view of the charger's safety mechanisms, including an integrated superconductor and durable zinc alloy casing, designed to prevent overheating and ensure safe operation.



**100% BATTERY HEALTH**

# Low Temperature Charging For Superior Safety

Integrated Superconductor with heat-dissipating tech

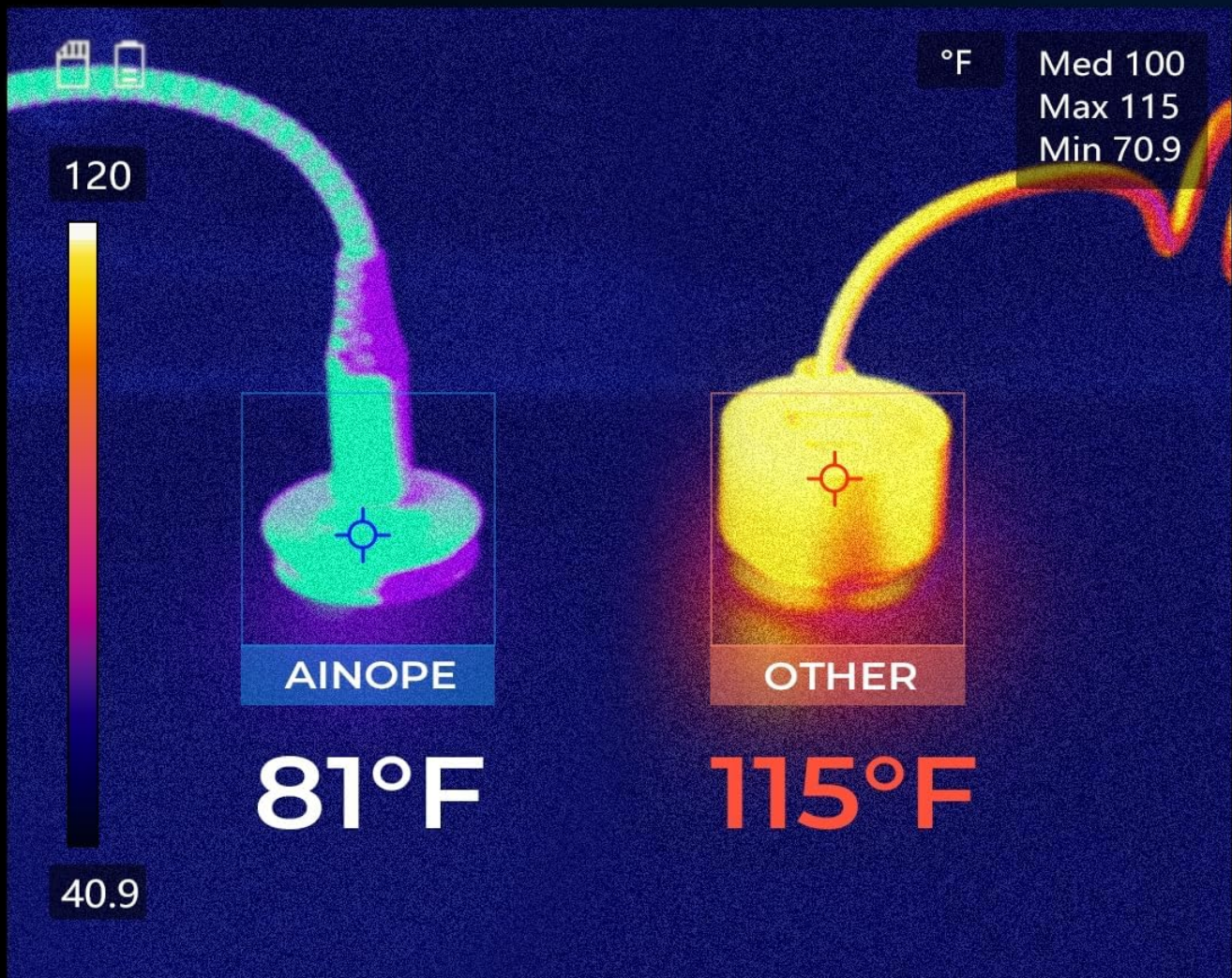


Image: A thermal scan demonstrating the AINOPE charger's efficient heat dissipation, maintaining a significantly lower operating temperature than a generic alternative, enhancing safety and device longevity.

## 7. TROUBLESHOOTING

Common Issues and Solutions:



- **Device not charging:**
  - Ensure the car charger is fully inserted into the cigarette lighter socket and the vehicle's ignition is on (if required).
  - Check if the charging cable is securely connected to both the charger and your device.
  - Try a different charging cable to rule out cable malfunction.
  - Test the charger with a different device to confirm charger functionality.
  - Verify that your device is compatible with USB-C charging.
- **Slow charging:**
  - Ensure your device supports fast charging protocols (PD 3.0 or QC 3.0) to utilize the charger's full potential.
  - Confirm you are using a high-quality USB-C to C cable that supports fast charging (like the included AINOPE cable).
  - Some devices may limit charging speed if they are running power-intensive applications or are excessively hot.
- **Charger feels warm:**
  - It is normal for the charger to become warm during fast charging due to power conversion. The all-metal design helps dissipate heat efficiently.
  - If the charger becomes excessively hot to the touch, disconnect it immediately and contact customer support.

## 8. SPECIFICATIONS

Model Number	H79
Brand	AINOPE
Product Dimensions	1.8 x 0.8 x 1 inches
Item Weight	2.08 ounces
Input Voltage	12-24 Volts (compatible with 12V car sockets)
Output Ports	1 x USB-C (PD 3.0 45W), 1 x USB-C (QC 3.0 45W)
Total Output Power	90W (Max)
Amperage	3 Amps (per port, max)
Connector Type	USB Type C
Color	Black
Special Features	Braided Cable, Fast Charging, Lightweight Design, Short Circuit Protection, Travel-friendly

Compatible Devices	Smartphones (iPhone 16/16 Pro/16 Pro Max/15/15 Pro/15 Pro Max/14/14 Mini/14 Pro/14 Pro Max/13/13 Mini/13 Pro/13 Pro Max/12/12 Mini/12 Pro/12 Pro Max/11/11 Pro/11 Pro Max/XS/XS Max/XR/X/8 Plus/8/7/7 Plus/6, Samsung Galaxy S25/S24/S22/S22 Ultra 5G/S21 Ultra 5G/S21/S21+/S20 Ultra, OnePlus 7 Pro), Tablets (iPad Pro 12.9inch (4th Gen)/12.9inch (3rd Gen)/12.9inch (2nd Gen)/12.9inch (1st Gen)/11inch (2nd Gen)), and other USB-C devices.
--------------------	--

## 9. WARRANTY & SUPPORT

### Warranty Information:

This AINOPE car charger includes a**365-day warranty** from the date of purchase. This warranty covers manufacturing defects and ensures the product functions as intended under normal use. Please retain your proof of purchase for warranty claims.

### Customer Support:

For any queries, issues, or warranty claims, AINOPE provides**24/7 after-sales service** and **lifetime friendly customer service**. Please contact the AINOPE-authorized store where you purchased the product or visit the official AINOPE website for support. Our dedicated customer care team will provide a suitable solution.



Image: An overview of AINOPE's customer service commitments, including a 365-day warranty, 30-day returns, and 24-hour professional support.