

## Tapo Tapo P105

# TP-Link Tapo P105 Smart Plug Mini User Manual

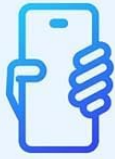
Model: Tapo P105

## 1. INTRODUCTION

The Tapo P105 Smart Plug Mini is a Wi-Fi enabled device designed for controlling home electronic appliances such as lamps, fans, and humidifiers. It offers remote control capabilities and is compatible with Amazon Alexa and Google Assistant for voice control. The Tapo app facilitates setup and provides comprehensive control features, including scheduling and an away mode.

## 2. KEY FEATURES

- **Super Easy Setup:** Features Bluetooth Onboarding for a smooth and fast configuration experience.
- **Hands-Free Voice Control:** Fully compatible with Amazon Alexa and Google Assistant for voice-activated control of electronic appliances.
- **Space-Saving Design:** Mini size prevents blocking adjacent sockets.
- **Advanced Scheduling & Timer:** Automate turning appliances on and off according to daily routines or countdown timers.
- **Trusted and Reliable:** UL94-V0 Flame-Retardant PC material for safety, UL certified.



**Remote  
Control**



**15A**



**Voice  
Control**



**Compact  
Design**



Download the  
Tapo App



**Schedule  
& Timer**



**Designed  
for Safety**



**Away  
Mode**



**Easy  
Setup**

Figure 2.1: Overview of Tapo P105 Smart Plug Mini key features.

## 2.1 Remote Control

Control your connected devices instantly from anywhere using the Tapo App on your smartphone or tablet.

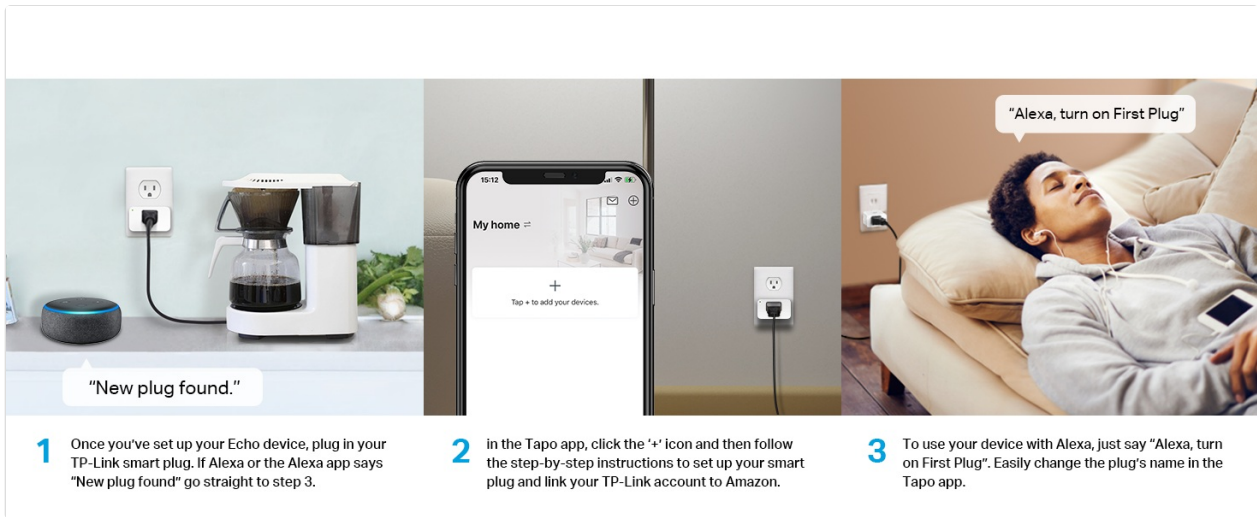


Figure 2.2: Remote control functionality via the Tapo app.

## 2.2 Voice Control

Integrate with Amazon Alexa or Google Assistant to manage your devices using voice commands, providing hands-free convenience.

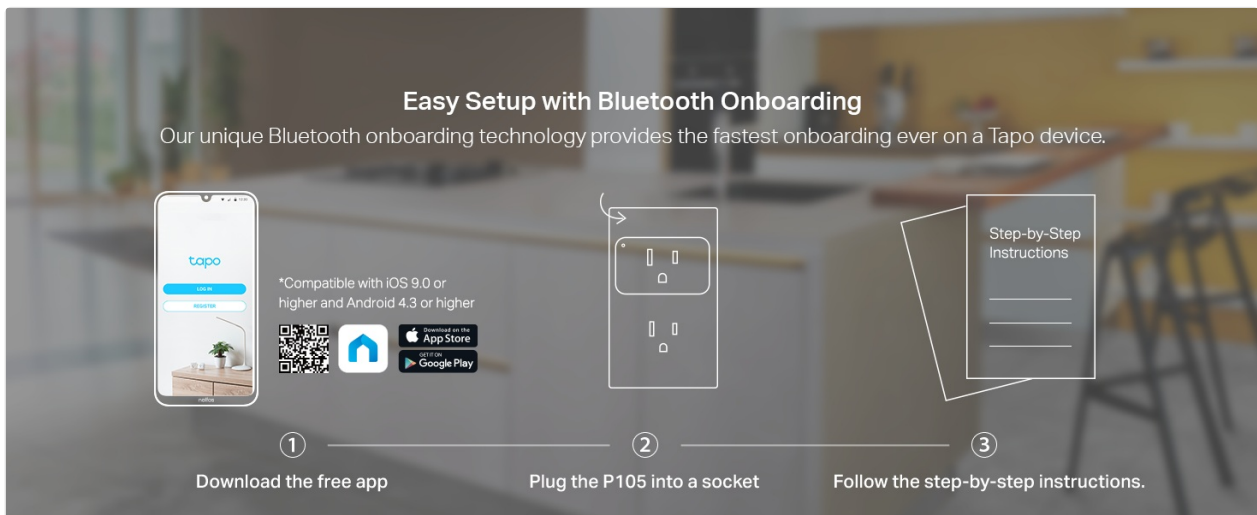


Figure 2.3: Voice control in action with a smart assistant.

## 2.3 Compact Design and Power

The Tapo P105 features a compact design that allows for the use of both outlets in a standard wall receptacle. Each plug supports devices up to 15A or 1800W.

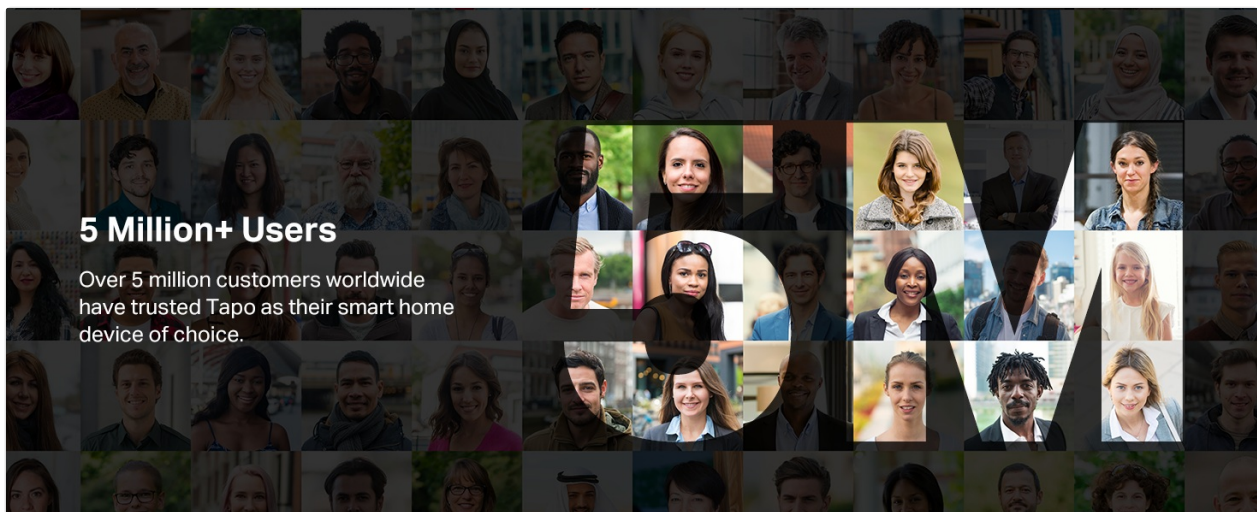


Figure 2.4: Compact design allowing full outlet access.

## 2.4 Safety Features

The Tapo P105 is UL Certified and constructed with UL94-V0 flame-retardant PC material. Nickel-plated phosphor bronze pins contribute to durable and stable connections, minimizing burn hazards.

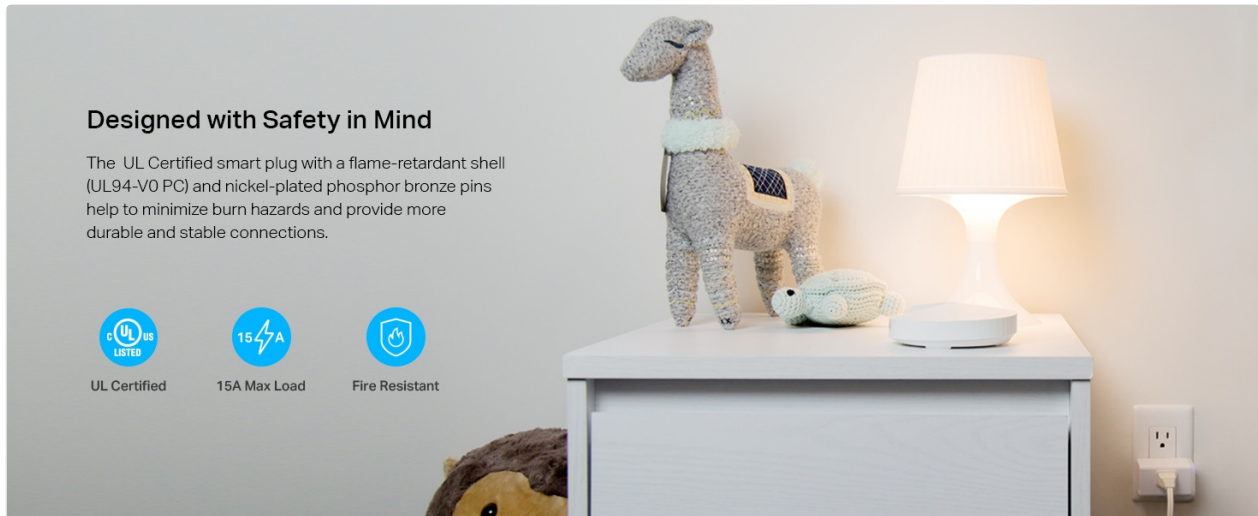


Figure 2.5: Safety certifications and features.

## 3. PACKAGE CONTENTS

The Tapo P105 Smart Plug Mini package includes the following items:

- 4 x Mini Smart Wi-Fi Plug P105
- 1 x Quick Start Guide



Figure 3.1: Contents of the Tapo P105 Smart Plug Mini 4-Pack.

## 4. SETUP INSTRUCTIONS

### 4.1 Initial Setup with Tapo App

The Tapo P105 features Bluetooth Onboarding for a quick and easy setup process. Follow these steps to get started:

1. **Download the Tapo App:** Search for 'Tapo' in the App Store (iOS 9.0 or higher) or Google Play (Android 4.3 or higher), or visit [tapo.com/app/download-app/](https://tapo.com/app/download-app/).
2. **Plug in the P105:** Insert the Tapo P105 smart plug into a standard wall socket.
3. **Follow In-App Instructions:** Open the Tapo app and follow the step-by-step guide to connect your smart plug to your Wi-Fi network.



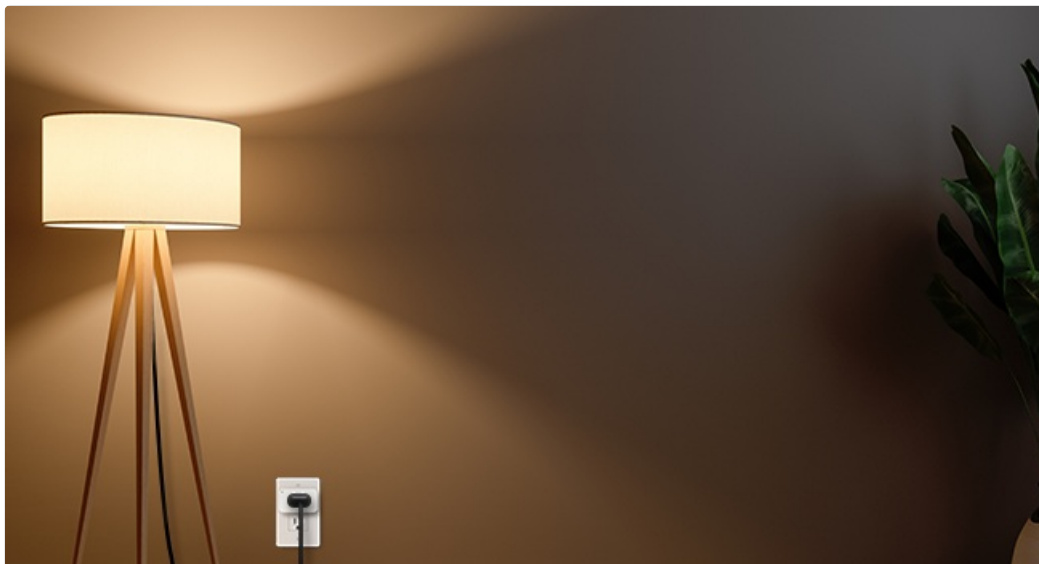


Figure 4.1: Easy setup process with Bluetooth Onboarding.

## 4.2 Connecting to Amazon Alexa

After setting up your Tapo P105 with the Tapo app, you can integrate it with Amazon Alexa:

1. Ensure your Echo device is set up. Plug in your Tapo P105. If the Alexa app indicates "New plug found," proceed to step 3.
2. In the Tapo app, tap the '+' icon and follow the instructions to set up your smart plug. Link your TP-Link account to Amazon.
3. To use your device with Alexa, simply say, for example, "Alexa, turn on First Plug." You can rename the plug in the Tapo app for easier voice commands.

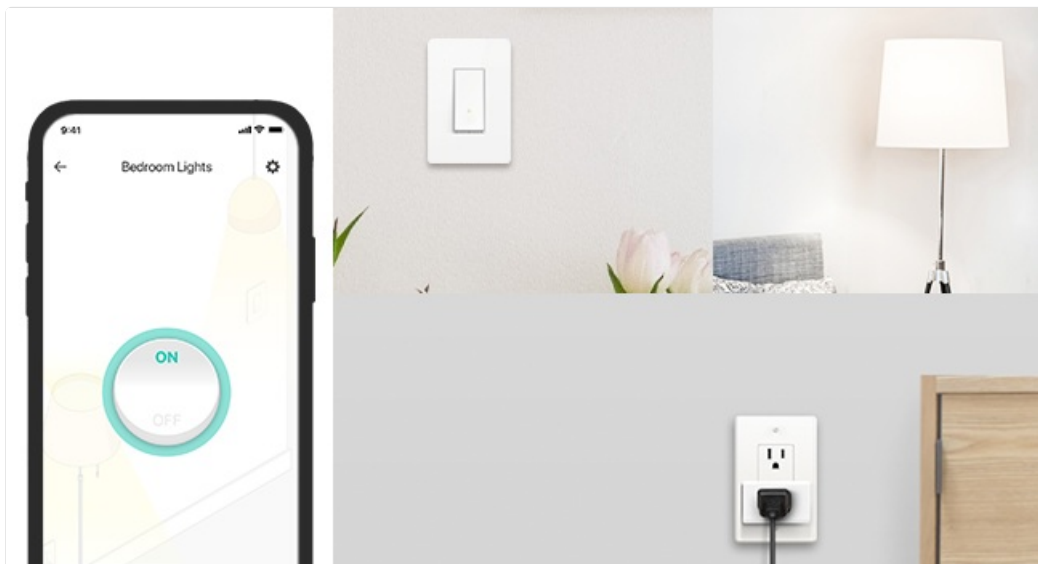


Figure 4.2: Steps for integrating with Amazon Alexa.

## 5. OPERATING INSTRUCTIONS

### 5.1 Remote Control via Tapo App

Once configured, use the Tapo app to turn your connected devices on or off from any location with an internet

connection. The app provides a clear interface to manage all your smart plugs.

## 5.2 Scheduling and Timers

Set custom schedules for your devices to automatically power on or off at specific times. You can also use countdown timers for temporary control. This feature is ideal for managing lights, fans, or other appliances to align with your daily routine.



Figure 5.1: Example of scheduling and timer functions.

## 5.3 Away Mode

Activate 'Away Mode' to randomly turn connected lights on and off, creating the impression that someone is home. This feature can enhance security when you are away.

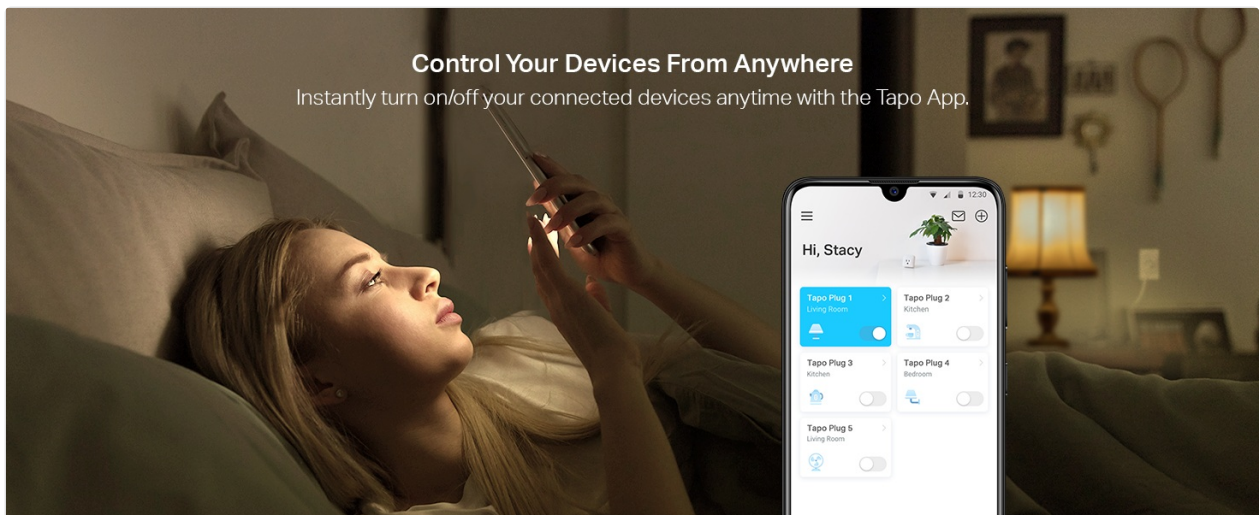


Figure 5.2: Away Mode simulating occupancy.

## 6. MAINTENANCE

To ensure optimal performance and longevity of your Tapo P105 Smart Plug Mini, follow these maintenance guidelines:

- **Cleaning:** Disconnect the smart plug from the power outlet before cleaning. Use a soft, dry cloth to wipe

the exterior. Do not use liquid cleaners or aerosols.

- **Environment:** Avoid exposing the device to excessive moisture, heat, or direct sunlight. Ensure it is used within the specified operating temperature range (32°F to 104°F).
- **Firmware Updates:** Regularly check the Tapo app for available firmware updates to ensure your device has the latest features and security enhancements.

## 7. TROUBLESHOOTING

### 7.1 Connectivity Issues

- **Wi-Fi Connection:** Ensure your smart plug is within range of your 2.4GHz Wi-Fi network. The Tapo P105 does not support 5GHz Wi-Fi.
- **Router Check:** Verify that your router is functioning correctly and that other devices can connect to the internet.
- **Restart Device:** Unplug the smart plug from the outlet, wait a few seconds, and plug it back in.
- **Reset:** If issues persist, perform a factory reset (refer to the Quick Start Guide for specific instructions) and re-add the device through the Tapo app.

### 7.2 App Control Problems

- **App Version:** Ensure your Tapo app is updated to the latest version.
- **Internet Connection:** Confirm your smartphone has an active internet connection.
- **Account Login:** Verify you are logged into the correct Tapo account.

### 7.3 Voice Control Not Responding

- **Link Account:** Confirm your Tapo account is correctly linked to your Amazon Alexa or Google Home account.
- **Device Name:** Ensure you are using the correct device name as configured in the Tapo app and recognized by your voice assistant.
- **Assistant Status:** Check if your voice assistant device (e.g., Echo, Google Home speaker) is online and responsive.

## 8. SPECIFICATIONS

Specification	Detail
Model	Tapo P105
Operation Mode	ON-OFF
Current Rating	15 Amps



Operating Voltage	120 Volts (AC)
Contact Type	Normally Closed
Connector Type	Plug In
Brand	Tapo
Terminal	Through Hole
Item dimensions L x W x H	1.5 x 1.5 x 2.11 inches
Circuit Type	1-way
Contact Material	Metal
International Protection Rating	IP00
Number of Positions	1
Lower Temperature Rating	32 Degrees Fahrenheit
Upper Temperature Rating	104 Degrees Fahrenheit
Controller Type	Amazon Alexa, Android, iOS
Control Method	App, Voice
Connectivity Protocol	Bluetooth, Wi-Fi
Color	White
Manufacturer	TP-Link
Item Weight	9.9 ounces
Plug Format	Type B

## 9. WARRANTY INFORMATION

The Tapo P105 Smart Plug Mini comes with a 2-year manufacturer's warranty. Please retain your proof of purchase for warranty claims.

## 10. SUPPORT

For technical assistance or further inquiries, please contact TP-Link support:

- **Phone:** (866) 225-8139
- **Website:** [myproducts.tp-link.com/us](https://myproducts.tp-link.com/us)

- **Email:** [support.USA@tp-link.com](mailto:support.USA@tp-link.com)