

[Manuals.plus](#) /

> [JUCVNB](#) /

> JUCVNB Mini Portable Sewing Machine UFR-505 Instruction Manual

JUCVNB UFR-505

JUCVNB Mini Portable Sewing Machine UFR-505 Instruction Manual

Model: UFR-505 | Brand: JUCVNB

1. INTRODUCTION

The JUCVNB Mini Portable Sewing Machine UFR-505 is designed for ease of use, making it suitable for beginners and experienced sewers alike. Its compact and lightweight design makes it ideal for everyday household projects, DIY crafts, and on-the-go use. This machine features 12 built-in stitch patterns, dual power supply options (AC adapter or 4 AA batteries), and two control modes (foot pedal or button).



Figure 1: JUCVNB Mini Portable Sewing Machine UFR-505.

2. IMPORTANT SAFETY INSTRUCTIONS

- Always disconnect from the power supply when changing the needle.
- Children should only use the appliance with adult supervision.
- Never run the machine when there's thread in the needle, but no fabric on the machine. This could damage the machine.
- Do not use the machine outdoors.
- Whenever the sewing machine is not in use, make sure it is switched off and unplugged from the power supply.
- Keep the machine in a dry and ventilated place.
- This machine is not a toy.
- Do not disassemble the machine unless you're a professional.
- Turn off switch and unplug the adapter when you're not using the machine.
- Do not use batteries and the AC adapter at the same time. Incorrect use may cause thread jams

or needle breakage.

3. PRODUCT OVERVIEW

Familiarize yourself with the components of your sewing machine.



Figure 2: Key components of the JUCVNB Mini Portable Sewing Machine UFR-505, including adjustable needle spacing, LED night light, replaceable presser foot, anti-slip bottom pad, mini hidden drawer, power off & speed switch, reverse sewing, and 12 built-in stitch patterns.

Key Features:

- **12 Built-in Stitch Patterns:** Positions 1-4 adjust stitch length, 5/6 create decorative patterns, 7/8 handle lock stitches, and 9-12 allow for curved stitching.
- **Dual Power Supply:** Operates with an AC adapter or 4 AA batteries (not included).
- **Two Control Modes:** Use the foot pedal or the button for operation.
- **Built-in Lamp:** Provides illumination for your sewing area.
- **Automatic Thread Rewind:** Simplifies bobbin winding.

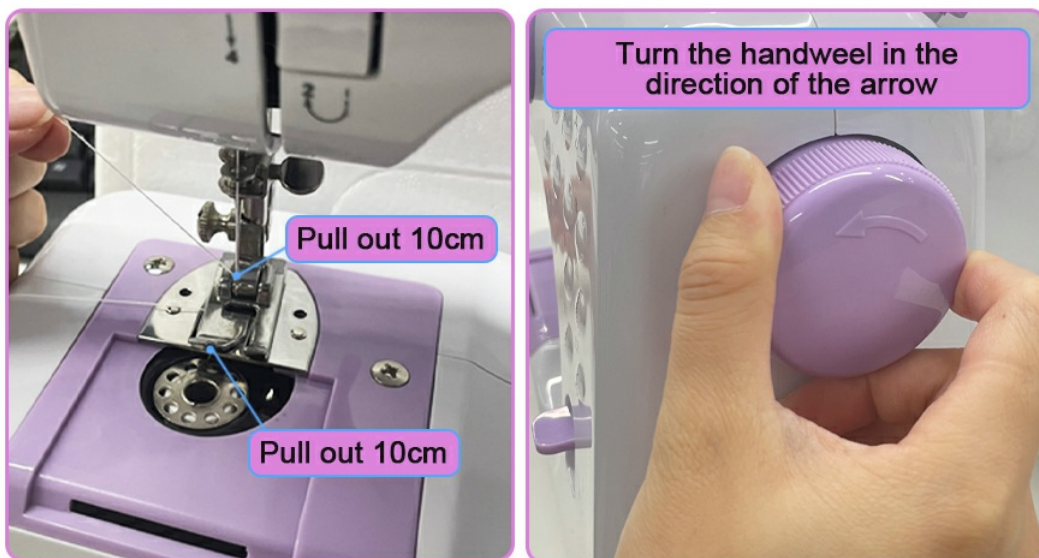
- **Reverse Function:** For reinforcing seams.

4. SETUP

4.1 Threading the Upper Thread

1. Put a spool on the thread spindle.
2. Put on the thread spindle cover.
3. Pull the thread in counterclockwise so it passes through the bobbin winder tension disk.
4. Pull the thread down through the gap.
5. Pull it back up as the arrow shows.
6. Go through the take-up lever hole from right to left.
7. Then go through the hole next to the needle clamp screw from up to down.
8. Easily thread the needle by sticking the needle threader through the eye from back to front.
9. Pull the thread out about 15 centimeters.

CAUTION: It's very important to thread in a correct way. Please follow each step carefully. The needle eye must be threaded from front to back, otherwise the machine may not sew.



TIPS AND TRICKS FOR THREADING

Figure 3: Visual guide for threading the upper thread.

4.2 Replacing the Bottom Bobbin

1. Slide the bobbin cover off and remove the empty bobbin.
2. Put the new bobbin in the holder with the thread going clockwise.
3. Hold the needle thread with your left hand and with your right hand, turn the hand wheel counterclockwise only one round.
4. The needle thread will pick up the bobbin thread. Pull it up through the hole under the needle.

5. Separate the two threads and pull them to the back of the machine under the presser foot, leaving about 15 centimeters hanging.
6. Restore the bobbin cover.

CAUTION: Always make sure the bottom thread is picked up from the hole under the presser foot, with about 15cm hanging out in clockwise direction before you start to sew.

4.3 Winding the Bottom Bobbin

1. First, take the top and bottom thread off.
2. Unwind some thread from a bigger spool.
3. Pull the thread around the bobbin winder tension disk.
4. Put an empty bobbin on the bobbin winder pin.
5. Put the thread through any one of the metal holes on the bobbin.
6. Then push the bobbin to the right (towards the hand wheel) to lock the bobbin.
7. Hold on to the thread, turn the hand wheel 5-6 rounds to wind the thread on the bobbin several circles.
8. Cut the thread tail.
9. Then turn on the power switch to start winding.
10. When you have enough thread wound on, turn off the power switch to stop winding.
11. Cut the thread.
12. Push the bobbin to the left (away from the hand wheel) and take the bobbin off.

CAUTION: Make sure there is no thread in the machine before you wind a new bobbin, because this could cause the thread jamming.

4.4 Replacing the Needle

1. Hold the old needle and loosen the needle clamp screw.
2. Remove the needle and discard it responsibly.
3. Insert the new needle into the clamp with the flat side of the needle toward the presser foot bar and push the needle all the way up.
4. Then tighten the screw.

CAUTION: Always turn off the switch or unplug the adapter before you change the needle. Make sure the new needle faces the right direction and the screw is tightened.

4.5 Replacing the Presser Foot

1. Turn the hand wheel counterclockwise to raise the needle to its highest position.
2. Raise the presser foot lifter and press the presser foot locking lever. The presser foot will drop off automatically from the locking device.
3. Put the presser foot under the presser foot locking device.
4. Lower the presser foot lifter.
5. Connect the intermediate connecting shaft of locking device and groove on the presser foot.
6. Lifting the presser foot lifter, the presser foot will engage automatically.

CAUTION: If the foot has not been picked up, check to make sure the cut-out is directly above the pin of the foot and repeat the steps.

4.6 Using the Adapter and Foot Pedal

1. Connect the adapter by inserting the jack-plug into the DC input.
2. Connect the jack-plug of foot pedal into the foot pedal input.
3. Then you can use the foot pedal to control the machine instead of using the hand switch.

CAUTION: Make sure the foot pedal and adapter are unplugged from the machine when you're not using it, so the sewing machine won't accidentally start up.

4.7 Installing the Batteries

1. Remove the battery compartment under the bottom of the machine.
2. Insert 4xAA batteries into the compartment per the positive and negative signs on the box.
3. Replace the battery cover.

CAUTION: Make sure the power switch is on the "OFF" position when inserting or changing the batteries. The adapter and batteries cannot be used at the same time, otherwise will cause damage to the machine. Please take out the batteries when using adapter. The batteries should be inserted in right positive and negative position direction, otherwise the machine will not work.

5. OPERATING THE MACHINE

5.1 Sewing

1. First of all, turn the hand wheel counterclockwise to raise the needle to its highest position.
2. Raise the presser foot lifter.
3. Upper thread under the presser foot and take out the fabric from left side, cannot take it out from the front of machine, otherwise the needle may get bent. Take out of the sample fabric from left side of the machine and leave the thread about 15cm.
4. Place the fabric under the presser foot, lower the presser foot.
5. Turn the hand wheel counterclockwise 2-3 rounds to make sure there is no jamming in the stitches.
6. Slide the power switch to the Low or High speed position and the machine will automatically start sewing. (We recommend the low speed for beginners).
7. Turn off the switch, raise the needle up, turn the pattern selection dial to the pattern stitch you want.
8. When you finished sewing, turn off the switch, turn the hand wheel to raise the needle up, lift the presser foot and then gently remove the fabric from left and cut the thread with the thread cutter.

CAUTION: Before starting sewing, it is important to make sure the threading is correct, otherwise it may not sewing. Every time turn the hand wheel should be in counterclockwise direction as the arrow shows. When you want to change the pattern stitch, stop sewing and turn the hand wheel to raise the needle all the way up so it doesn't get bent.

5.2 Adjusting Stitching

- If the top and bottom thread looks too tight or loose, you can turn the upper thread tension dial to adjust the stitching tension.

- When the top thread looks like a straight line, indicating an over-tight top thread, turn the upper thread tension dial to a smaller number to reduce tension until the stitching is even.
- When the bottom thread looks like a straight line, indicating the top thread is too loose, turn the upper thread tension dial to a bigger number to increase tension until the stitching is even.

5.3 Reverse Sewing

To sew backwards, press and hold down the reverse lever while you're sewing.

CAUTION: You should only use reverse sewing on straight stitches (1-4). This is useful for reinforcing the seam.

5.4 Sewing Sleeves

Place the cloth over the sewing arm, then start to sew.

5.5 Buttonhole Sewing

1. Change the foot to the buttonhole foot.
2. Put the cloth under presser foot, lower the presser foot lifter, then choose 8th stitch.
3. Turn on switch and sew 5-6 stitch in low speed, then turn off switch.
4. Choose the 7th stitch, turn on switch and sew on the cloth in suitable length, then turn off switch. (Note that try to keep sewing stitch in straight line).
5. Choose the 8th stitch to sew 5-6 stitch in low speed, then turn off switch.
6. Raise the presser foot, rotating the cloth for 180 degrees.
7. Choose the 7th stitch and set the needle to the right position on the fabric, then lower down the presser foot.
8. Turn on switch and sew till buttonhole is over sewed fully.

5.6 Nailing Button

1. Change the foot to Nail button foot.
2. Put the fabric under the presser foot, put the button on the fabric where you need to nail the button, move the fabric with button under presser foot, check if they are under the right position, then lower down the presser foot.
3. Choose the 8th stitch, turn the hand wheel slowly, adjusting the position of the hole while the needle swinging around.
4. Then turn on switch, sew 4-5 stitch in low speed, then turn off switch after done.
5. If you want to nail cross line or double line, doing the steps as above.

CAUTION: Before nailing button, you must use hand to turn the hand wheel slowly and make sure the needle will only stab into the buttonhole while swinging around in case of breaking the needle. Make sure the hole distance of the button you choose match the needle swinging when it settled at 8th stitch, in case of nailing on the side of button will break the needle.

6. TROUBLESHOOTING

Problem	Problem Cause	Amendment
---------	---------------	-----------

Problem	Problem Cause	Amendment
No power or the machine runs slowly	Adapter is not properly connected or power inadequate	Correctly connect adapter. Replace a new adapter.
	Batteries are dead or inserted incorrectly	Replace new batteries or insert them in the right way.
Skipping stitches	Needle is not inserted properly	Remove and re-insert the needle with the flat side of the needle face to the needle bar.
	Needle bent	Remove and re-insert a new needle.
	Hook tip deformation or burr	Replace a hook or use an abrasive paper polishing the burr.
	Presser foot is too loose	Tighten the screw of presser foot.
Bobbin thread cannot be drawn up	The fabric is not applicable	Replace a fabric or try to put a regular paper under the fabric (not 100% workable).
	Bobbin thread is not pulled out or has been used up	Pull out the bobbin thread about 10cm or replace a new bobbin thread.
	Needle bent	Remove and re-insert a new needle.
	Needle inserted incorrectly	Remove and re-insert the needle in the right way.
Thread keeps breaking	Upper thread or bobbin thread stuck or tangled	Thread the upper thread and bobbin thread again.
	The needle eye with burr	Change a new needle.
	Needle bent	Remove and re-insert a new needle.
Stitches too loose or uneven	Threading incorrectly or the upper thread runs out of the position	Check the threading and thread again.
	Upper thread too loose or tight	Adjust the thread tension dial to make sure the stitches sew evenly.
	Needle bent	Remove and re-insert a new needle.
Needle hits or breaks	Presser foot or the needle is loose	Tighten the screw.
	Pull fabric with force when sewing	Remove and re-insert a new needle, and thread again.
	The needle is in the fabric when adjust the pattern selection dial	Remove and re-insert a new needle.

Problem	Problem Cause	Amendment
Machine gets stuck	Machine threaded incorrectly	Re-thread the machine correctly, especially make sure that the thread is between the two clips in the tension dial.
	Needle bent	Remove and insert a new needle.
Bobbin thread become a mess	Bobbin thread winding is too loose or not well winded caused bobbin thread jam	Replace a new well winded bobbin.
	The upper thread is missing go through the gap of tension dial or the tension is	Re-thread the machine correctly or adjust the tension dial.

7. SPECIFICATIONS

- **Product Dimensions:** 12.68 x 5.87 x 11.85 inches
- **Item Weight:** 4.4 pounds
- **Manufacturer:** JUCVNB
- **Item Model Number:** UFR-505
- **Brand:** JUCVNB
- **Color:** Purple (Basic Sewing Kit)
- **Material:** Metal, Plastic
- **Power Source:** AC/DC
- **Is Electric:** Yes

8. WARRANTY AND SUPPORT

JUCVNB focuses on developing and producing mini sewing machines. For any issues or support, please do not hesitate to reach out to us. Protection plans are available for purchase separately:

- 3-Year Protection Plan
- 4-Year Protection Plan
- Complete Protect: One plan covers all eligible past and future purchases (monthly subscription).