

RAIFOOLLY RF00123

RAIFOOLLY 16-inch Cordless Dimmable Picture Light (Model RF00123-NK) Instruction Manual

INTRODUCTION

Thank you for choosing the RAIFOOLLY 16-inch Cordless Dimmable Picture Light. This manual provides essential information for the safe and efficient operation of your new picture light. Please read it thoroughly before installation and use, and retain it for future reference.

SAFETY INFORMATION

- Ensure the product is handled with care to prevent damage.
- Do not expose the light to water or excessive moisture. This product is not waterproof.
- Keep out of reach of children.
- Use only the provided USB cable for charging.
- If the battery is fully drained, charge it for approximately one hour before attempting to turn on the light.

PRODUCT OVERVIEW

The RAIFOOLLY 16-inch Picture Light is designed to illuminate artwork, photos, and displays with adjustable brightness and a convenient timer function. It features a durable metal and aluminum construction with a brushed nickel finish.

Packing List

- 1 x Picture Light
- 1 x Remote Control
- 2 x Screws
- 1 x User Manual
- 1 x Mounting Bracket

Key Features

- **Rechargeable Battery:** Powered by a 3.7V 5000 mAh lithium battery. A full charge (3-4 hours) provides

10 hours of light at maximum brightness or 50 hours at minimum brightness.

- **Dimmable Brightness:** Adjust light intensity via the manual touch switch or remote control.
- **Auto-Off Timer:** Set the light to automatically turn off after 1, 2, 3, or 4 hours using the remote control.
- **Rotary Head:** The light tube can be rotated 150° up or down to direct illumination precisely.
- **Cordless Design:** Eliminates the need for wiring, offering flexible placement.

SETUP

Installation

1. Identify the desired location for your picture light.
2. Secure the mounting bracket to the wall using the provided screws. If drilling a pilot hole, its diameter should be 5mm.
3. Align the picture light with the mounted bracket and slide it onto the bracket until it is securely in place. The light is designed to easily slide on and off the bracket for charging.

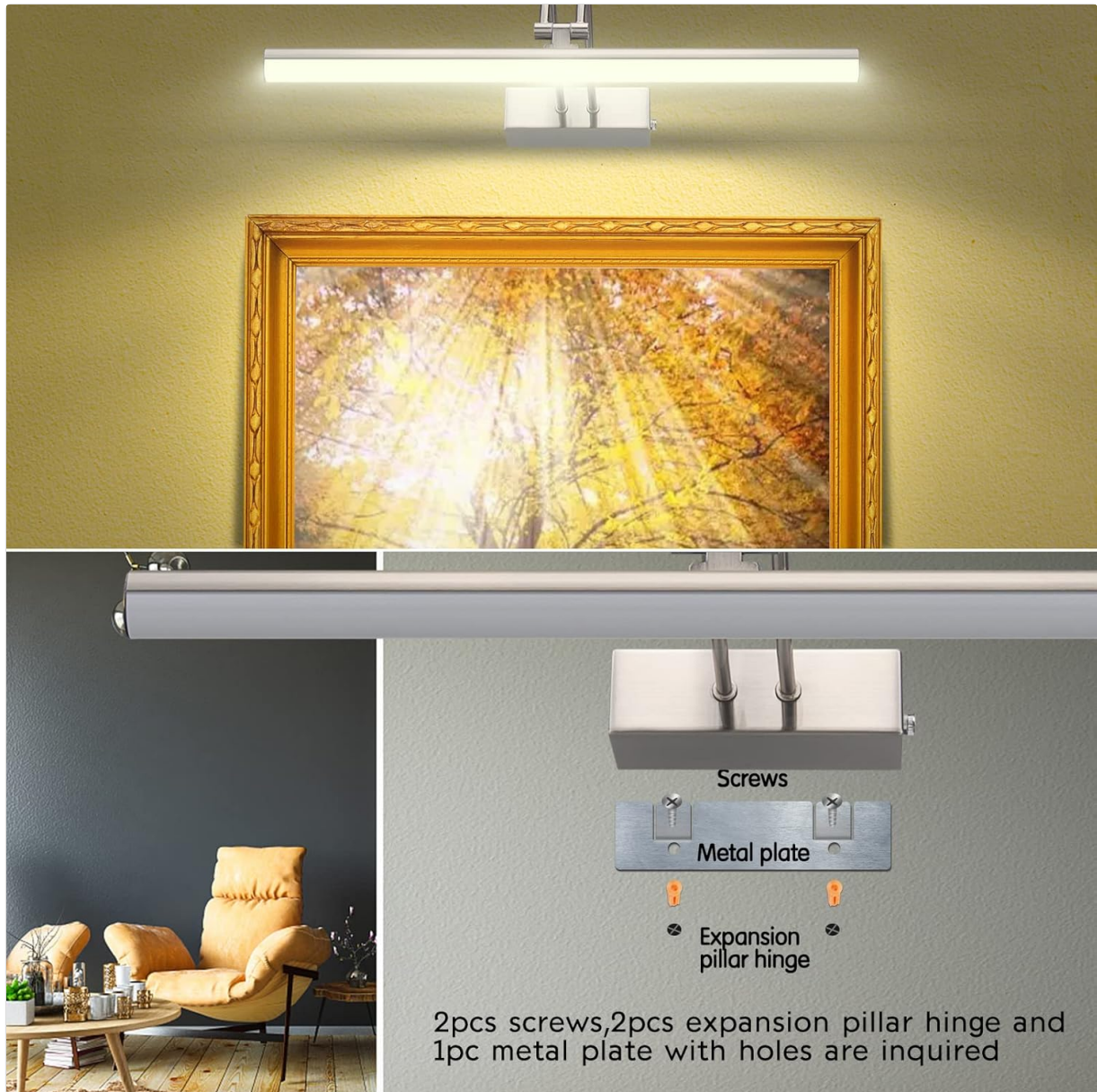


Figure 1: Installation of the picture light using the mounting bracket and screws.

Charging the Light

1. Gently slide the picture light upwards off its mounting bracket.
2. Locate the charging port on the side of the light's base. The diameter of the charging cable plug is 3.5mm.
3. Connect the provided USB cable to the charging port and plug the other end into a USB outlet, computer, or power bank.
4. The power indicator light will illuminate blue when charging. It will turn OFF once the battery is fully charged.
5. A full charge typically takes 3-4 hours.

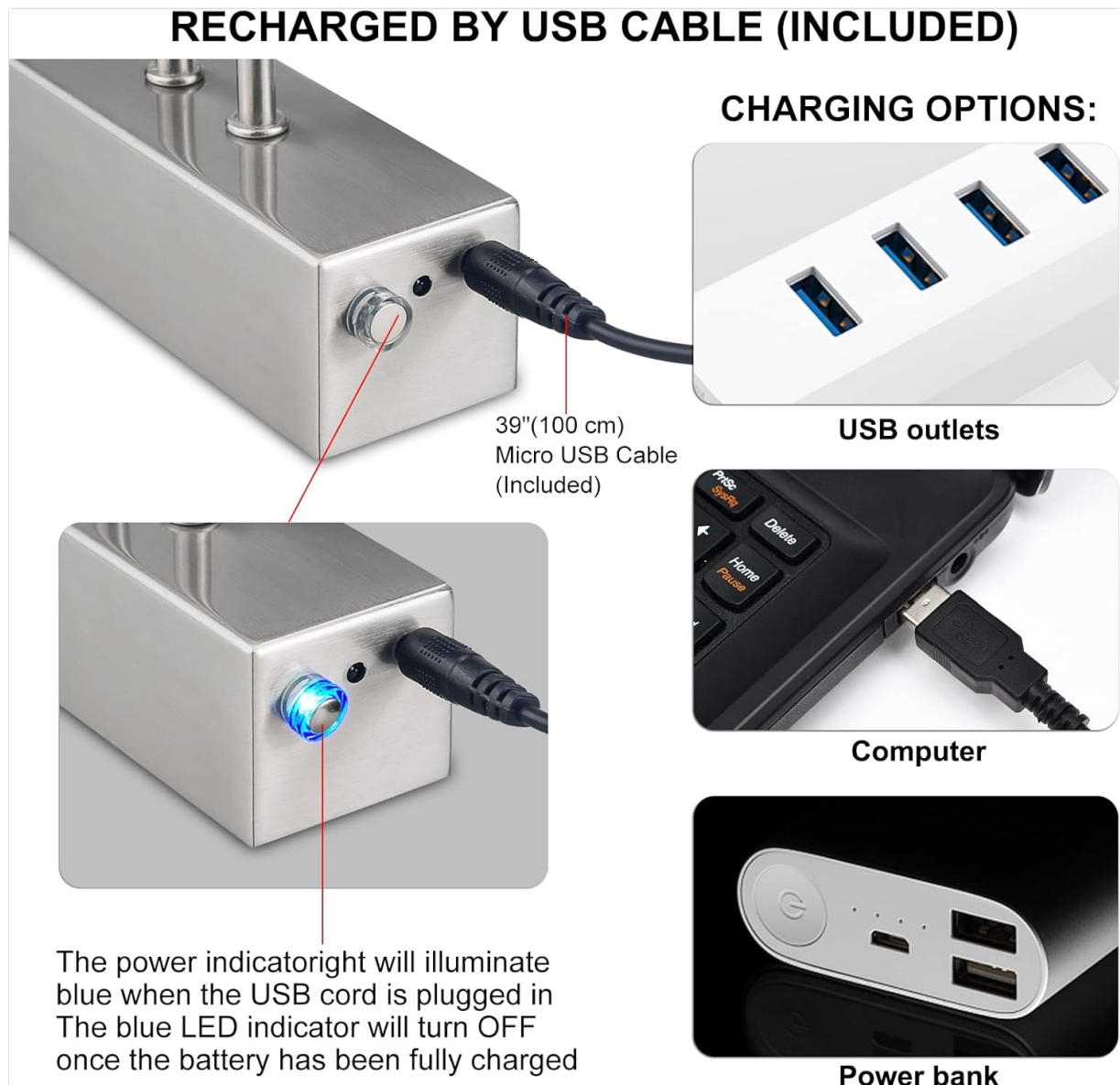


Figure 2: Charging options for the picture light using the included USB cable.

OPERATING INSTRUCTIONS

Power On/Off

- **Manual Switch:** Press and hold the manual switch on the side of the light's base to turn it on or off.
- **Remote Control:** Press the 'ON' or 'OFF' button on the remote control.



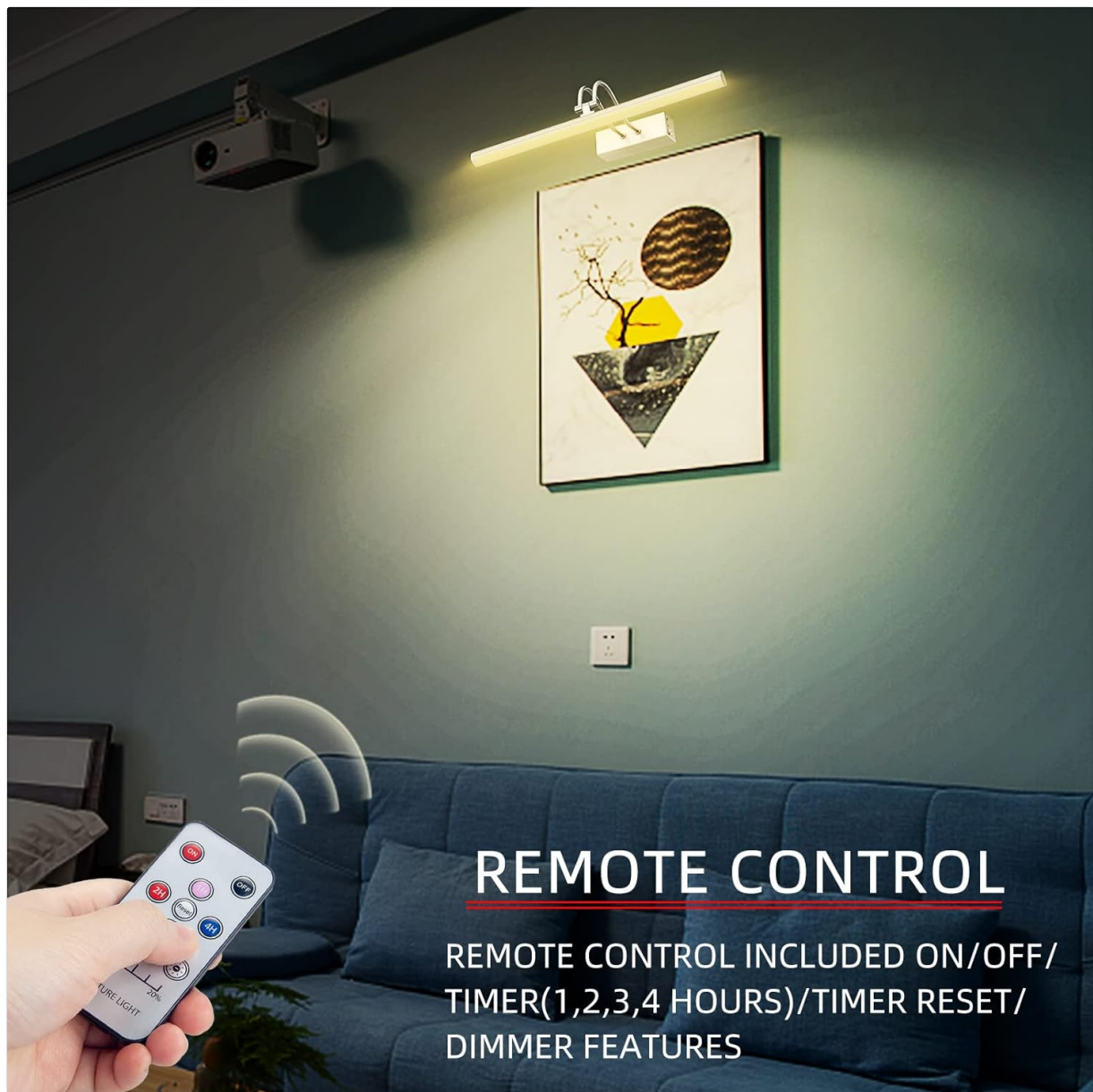
Figure 3: Manual touch dimmable switch for power and brightness adjustment.

Brightness Adjustment

- **Manual:** Long press the manual switch to cycle through brightness levels.
- **Remote Control:** Use the '+' or '-' buttons on the remote to increase or decrease brightness. The remote also has preset buttons for 100% and 20% brightness.

Timer Function

- Press the '1H', '2H', '3H', or '4H' buttons on the remote control to set the light to automatically turn off after the selected duration.
- Press the 'Reset' button to cancel the timer.



REMOTE CONTROL

REMOTE CONTROL INCLUDED ON/OFF/
TIMER(1,2,3,4 HOURS)/TIMER RESET/
DIMMER FEATURES

Figure 4: Remote control for convenient operation of the picture light.

Adjusting Light Direction

- The light tube can be rotated 150° up or down. Gently adjust the light head to achieve your desired illumination angle.

SIZE



Figure 5: The light features a 300° rotatable head for flexible light direction.

Versatile Use Cases

This picture light is suitable for various applications, including:

- Lighting up wall artworks, portraits, and gallery displays.
- Enhancing mirrors in bathrooms or bedrooms.
- Providing accent lighting for dartboards or other wall-mounted items.



Figure 6: Examples of the picture light in various settings, including artwork, mirrors, and dartboards.

MAINTENANCE

Charging Frequency

The battery life varies depending on brightness settings:

- Maximum Brightness: Up to 10 hours.
- Minimum Brightness: Up to 50 hours.

Recharge the light as needed. For optimal battery health, avoid completely draining the battery frequently.

Cleaning

Wipe the light gently with a soft, dry cloth. Do not use abrasive cleaners or solvents.

TROUBLESHOOTING

- **Light not turning on after full discharge:** If the battery was fully drained, charge the light for approximately one hour before attempting to turn it on. If the issue persists, please contact customer support.

- **Remote control not working:** Ensure there are no obstructions between the remote and the light. Check the remote's battery.

SPECIFICATIONS

Feature	Detail
Model Number	RF00123-NK
Dimensions	2"D x 16"W x 7"H
Item Weight	1.21 pounds (0.55 Kilograms)
Material	Metal and Aluminum
Finish Type	Brushed Nickel
Power Source	Battery Powered (3.7V 5000 mAh Lithium Battery)
Light Source Type	LED (48pcs super bright LED)
Wattage	3 watts
Brightness	280 Lumens (Max), 300 Lumens (Peak)
Color Temperature	3000 Kelvin (Warm White)
Control Method	Remote Control, Touch Dimmable Switch
Special Features	Cordless, Dimmable, Portable, Timer
Indoor/Outdoor Usage	Indoor

WARRANTY & SUPPORT

RAIFOOLLY offers a 1-year after-sales service for this product. For any issues or inquiries, please contact customer support.

HELPFUL VIDEOS

Your pictures deserve this spotlight!

This video demonstrates the RAIFOOLLY picture light in action, highlighting its ability to enhance artwork and overall room aesthetics. It showcases the light's features and how it can elevate your display.

My honest review

An in-depth review of the picture light, covering its installation, ease of use, and various features. The video provides practical insights into the product's performance and benefits.

Honest Review of this picture light

This video offers another perspective on the picture light, detailing its functionality, charging process, and overall user experience. It highlights the convenience of its cordless design and remote control.